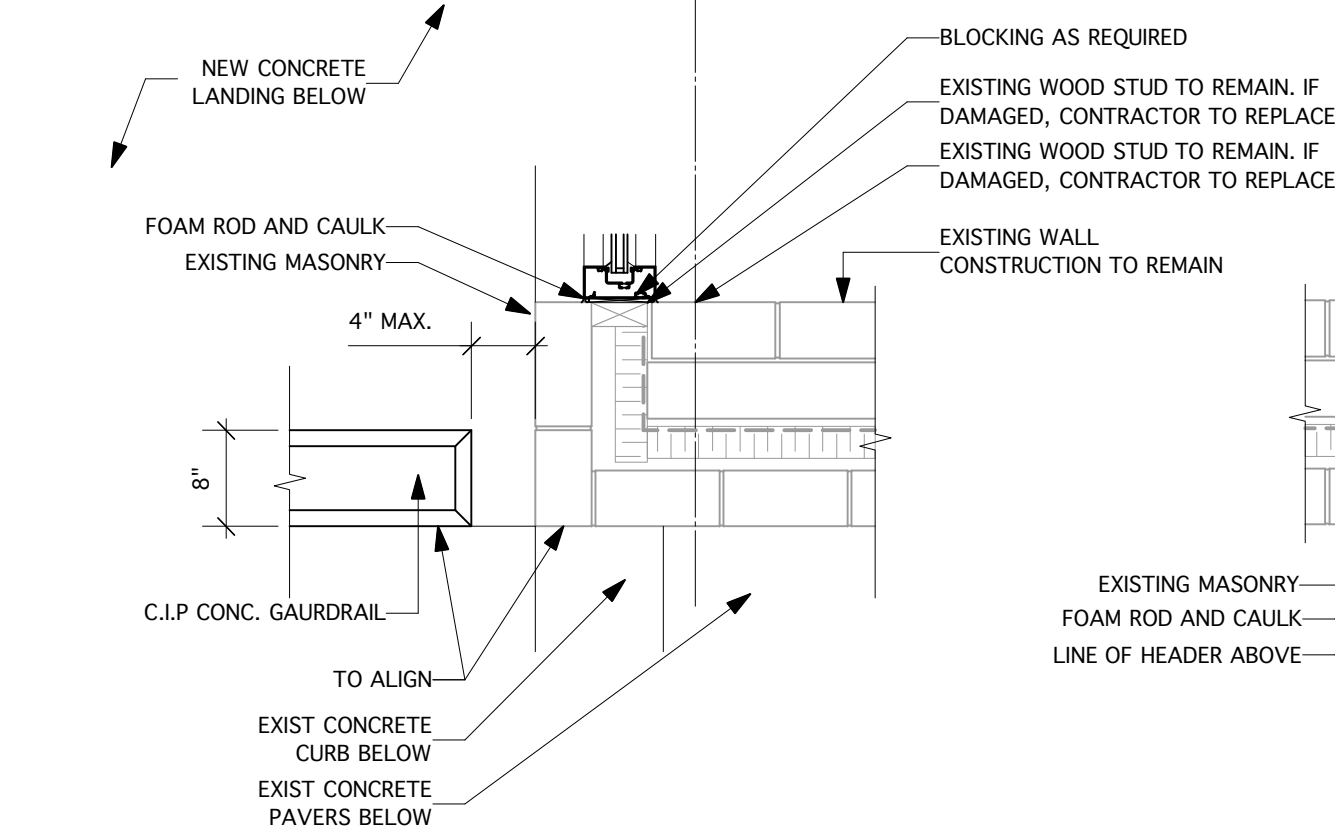
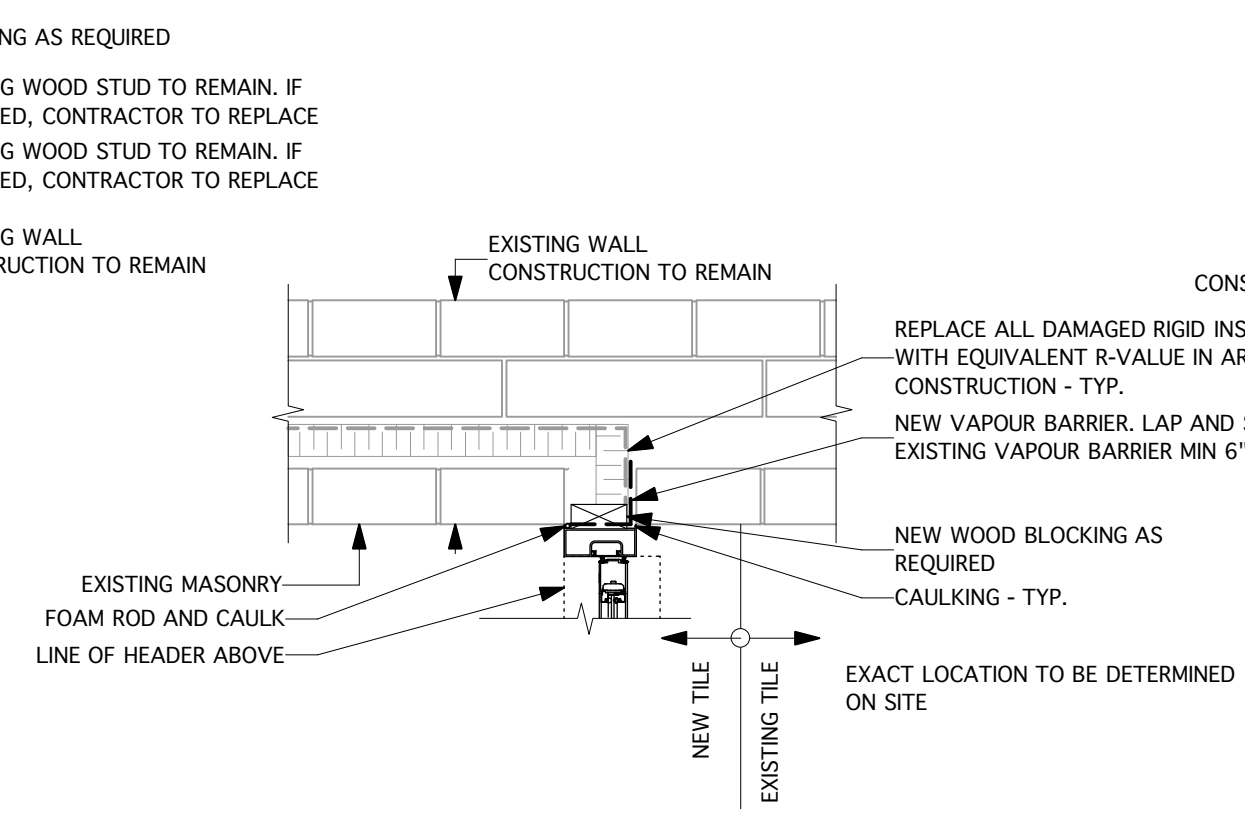


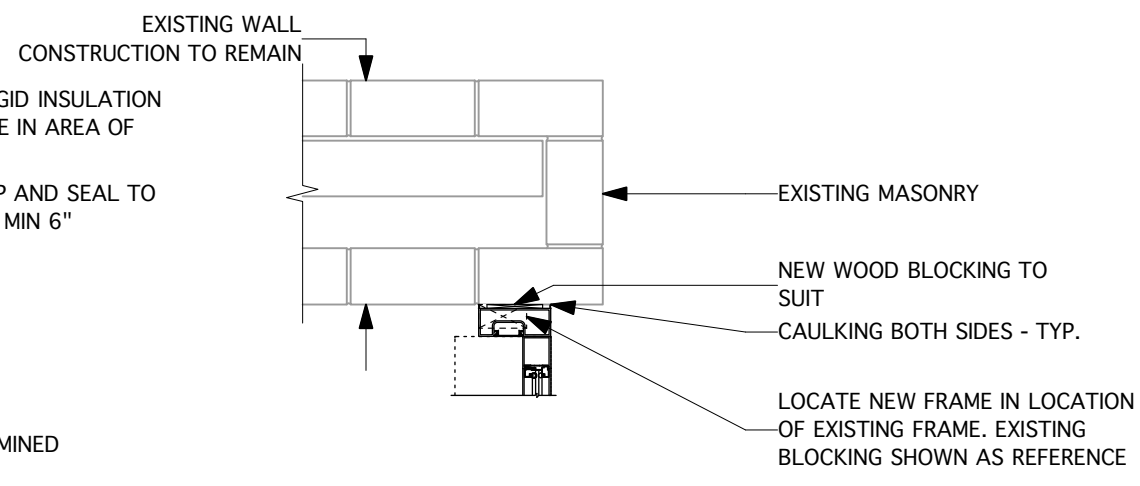
1 PLAN DETAIL
A1.4 Scale 1" = 1'-0"



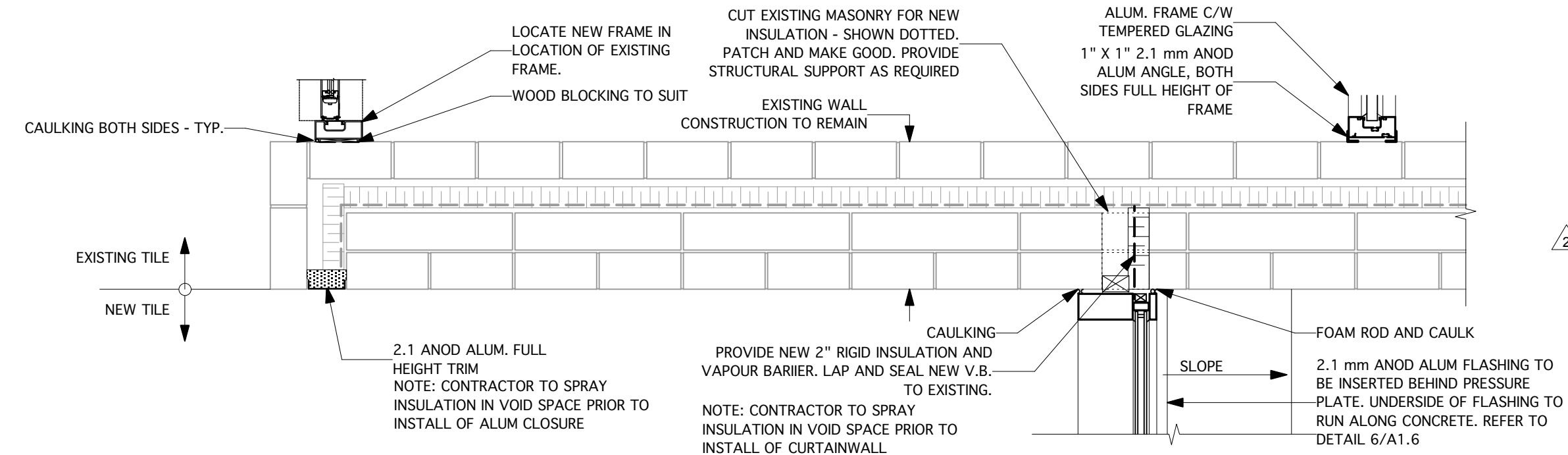
2 PLAN DETAIL
A1.4 Scale 1" = 1'-0"



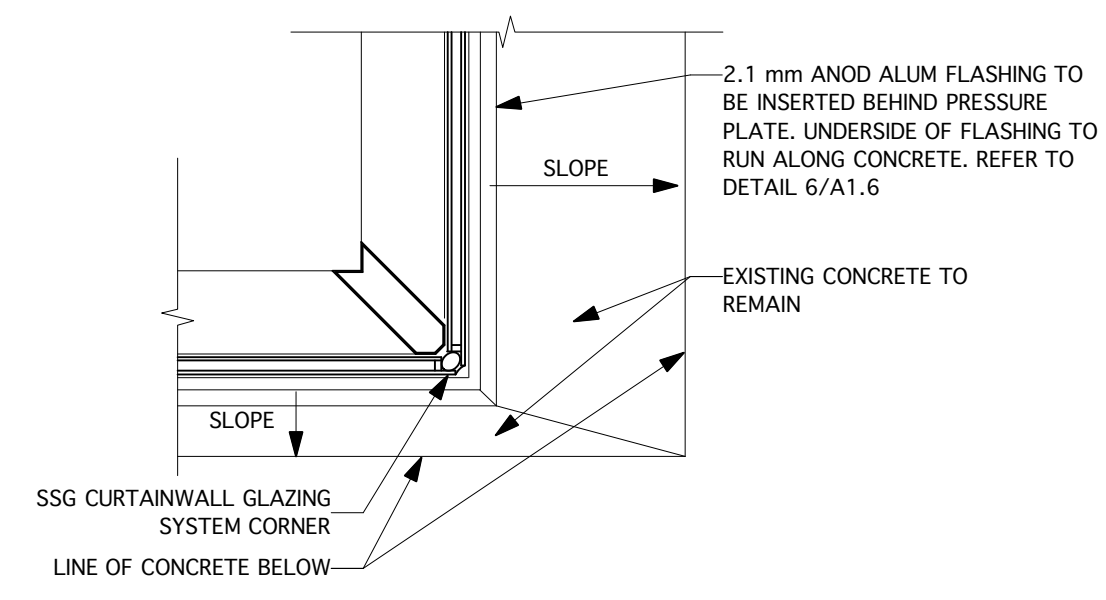
3 PLAN DETAIL
A1.4 Scale 1" = 1'-0"



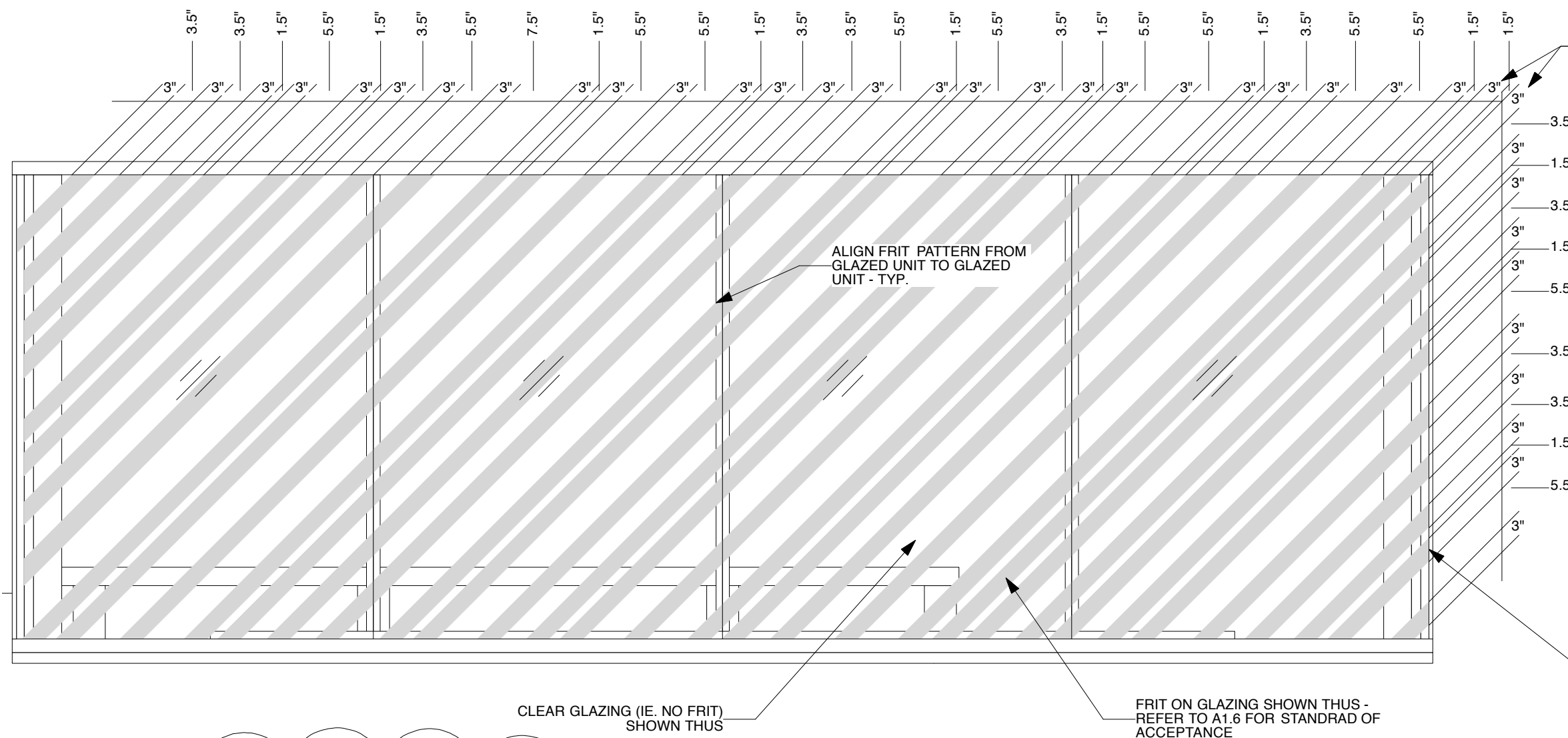
4 PLAN DETAIL
A1.4 Scale 1" = 1'-0"



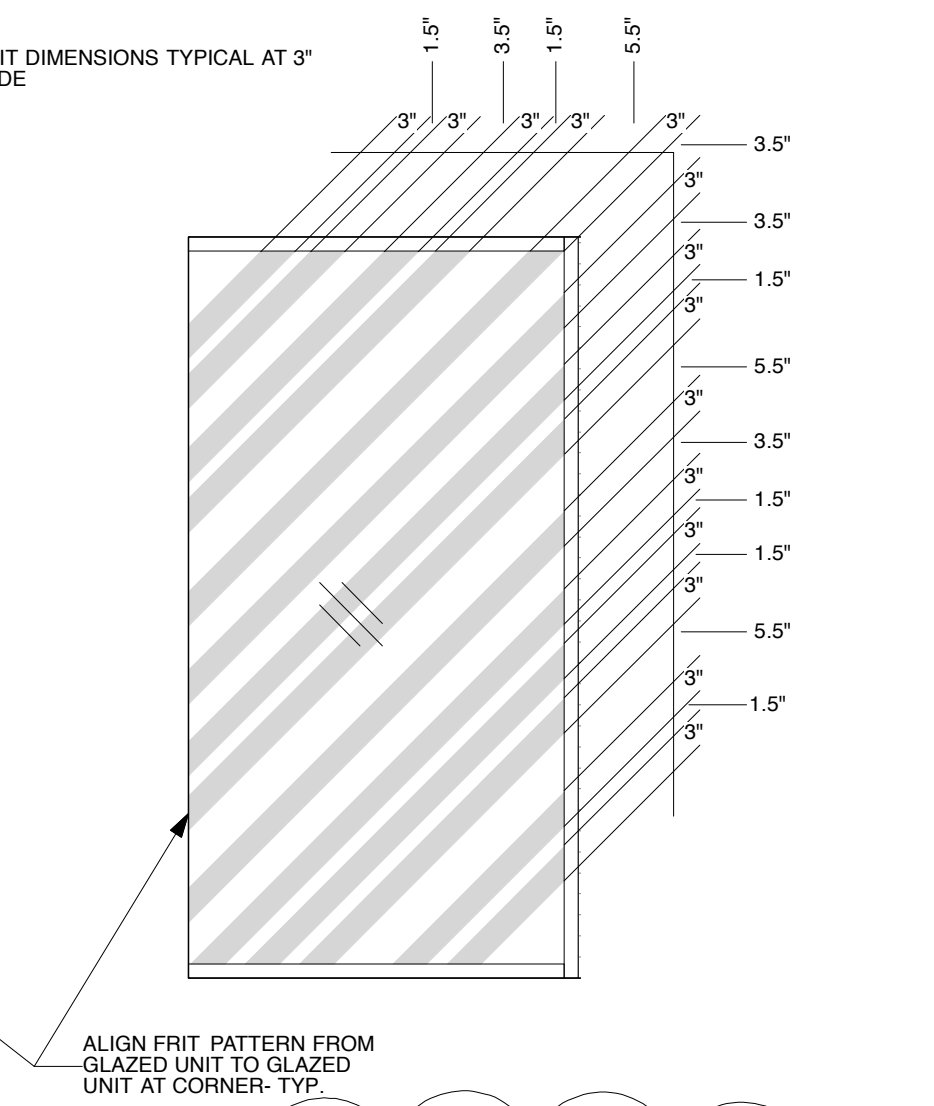
5 PLAN DETAIL
A1.4 Scale 1" = 1'-0"



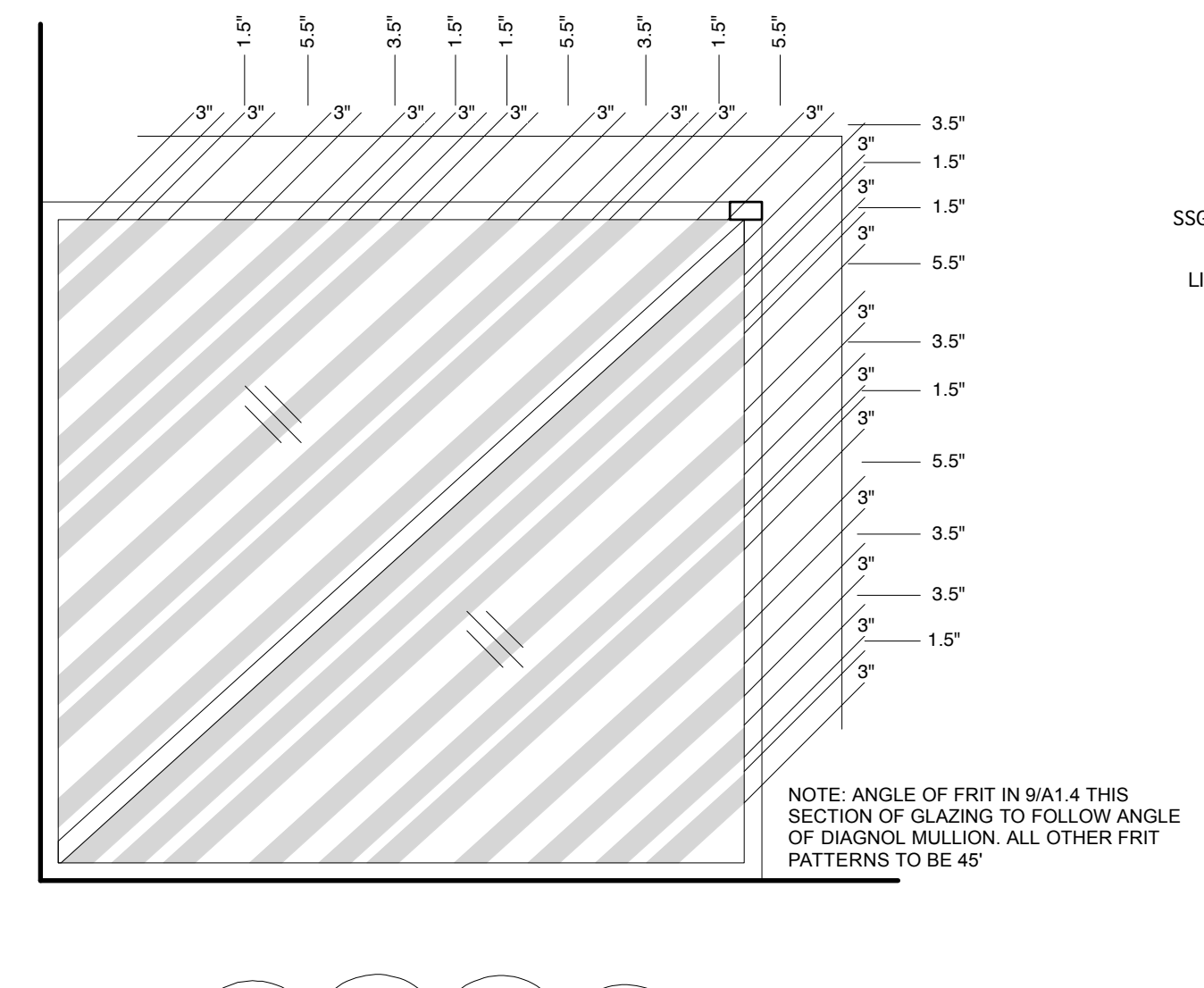
6 PLAN DETAIL
A1.4 Scale 1" = 1'-0"



7 FRIT PATTERN LAYOUT - SOUTH ELEVATION
A1.4 Scale 1/2" = 1'-0"
VIEW FROM EXTERIOR



8 FRIT PATTERN LAYOUT - WEST ELEVATION
A1.4 Scale 1/2" = 1'-0"
VIEW FROM EXTERIOR



9 FRIT PATTERN LAYOUT - INTERIOR WALL
A1.4 Scale 1/2" = 1'-0"
VIEW FROM LOBBY

No.	DATE	REVISION / ISSUANCE
5	YY.MM.DD	-
4	YY.MM.DD	-
3	YY.MM.DD	-
2	13 03 06	ISSUED WITH ADDENDUM NO. 2
1	13. 01. 18	ISSUED FOR CONSTRUCTION

Architect

1x1 ARCHITECTURE INC. No. 160
TRAVIS COOKE REGISTERED ARCHITECT

architecture inc.
130 Fort Street, Suite 103 Winnipeg, Manitoba R3C 1C7 204 318 2010

Project: BID OPPORTUNITY 931 - 2012
Seven Oaks Pool
Front Entrance Upgrades
444 ADSUM DRIVE

PLAN DETAILS

Project No. 1125
Date: FEBRUARY 21, 2013
Sheet A1.4