

GENERAL NOTES

CONTRACTOR AND SUB-CONTRACTORS SHALL VERIFY ALL JOB SITE DIMENSIONS, ALL DRAWINGS, DETAILS, AND SPECIFICATIONS, AND REPORT ANY DISCREPANCIES TO CONTRACT ADMINISTRATOR

CONTRACTOR TO FAMILIARIZE THEMSELVES WITH THE BUILDING REGULATIONS AND ADHERE TO THE REGULATIONS SET FORTH BEFORE PROCEEDING WITH CONSTRUCTION.

CONTRACTOR TO FAMILIAR THEMSELVES WITH THE CITY OF WINNIPEG ACCESSIBILITY GUIDELINES 2010 FOR THIS PROJECT

CONTRACTOR TO ENSURE CONTINUOUS MAINTENANCE OF SITE DURING CONSTRUCTION OR PROTECTION OF ALL MATERIALS AND WORK DONE TO DATE.

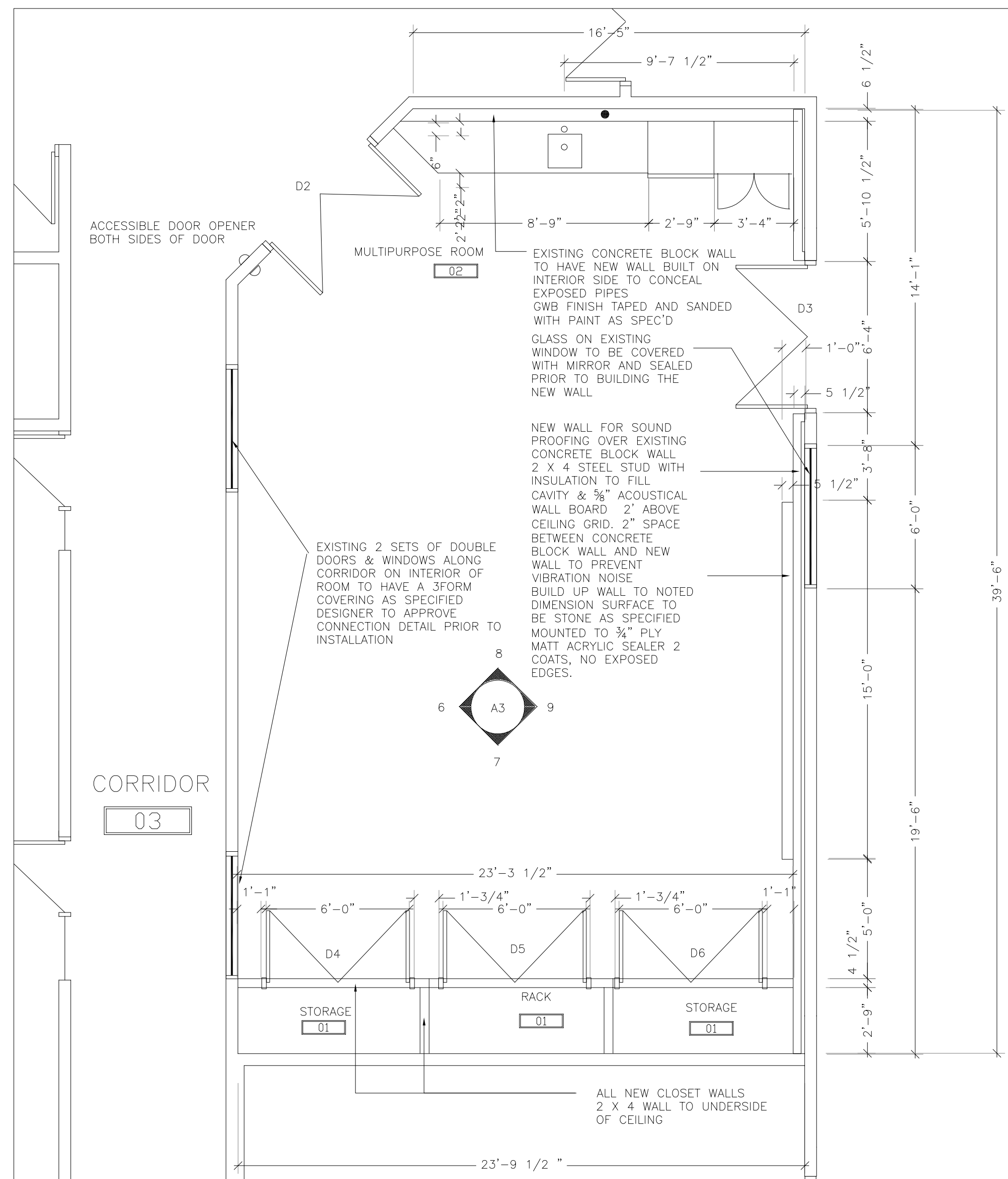
REFERENCE SYMBOLS

- ELEVATION SYMBOL ON PLAN: 1/102 - ELEVATION NUMBER, SHEET NUMBER ELEVATION OR DETAIL IS ON
- SECTION: 1/A2, 2 - SECTION NUMBER, SHEET NUMBER SECTION IS ON, SHEET NUMBER THAT SECTION IS TAKEN FROM
- DETAIL TITLE: 1/A2, 2 - DRAWING NUMBER, SHEET NUMBER DETAIL APPEARS ON, SHEET NUMBER THAT DETAIL IS TAKEN FROM
- WALL FINISH: PT, 2 - FINISH FOR WALLS OR DETAILS, COLOR NUMBER FOR FINISH
- ROOM NUMBER: 102
- DOORS NUMBER: 102A
- WALL TYPES: (C)

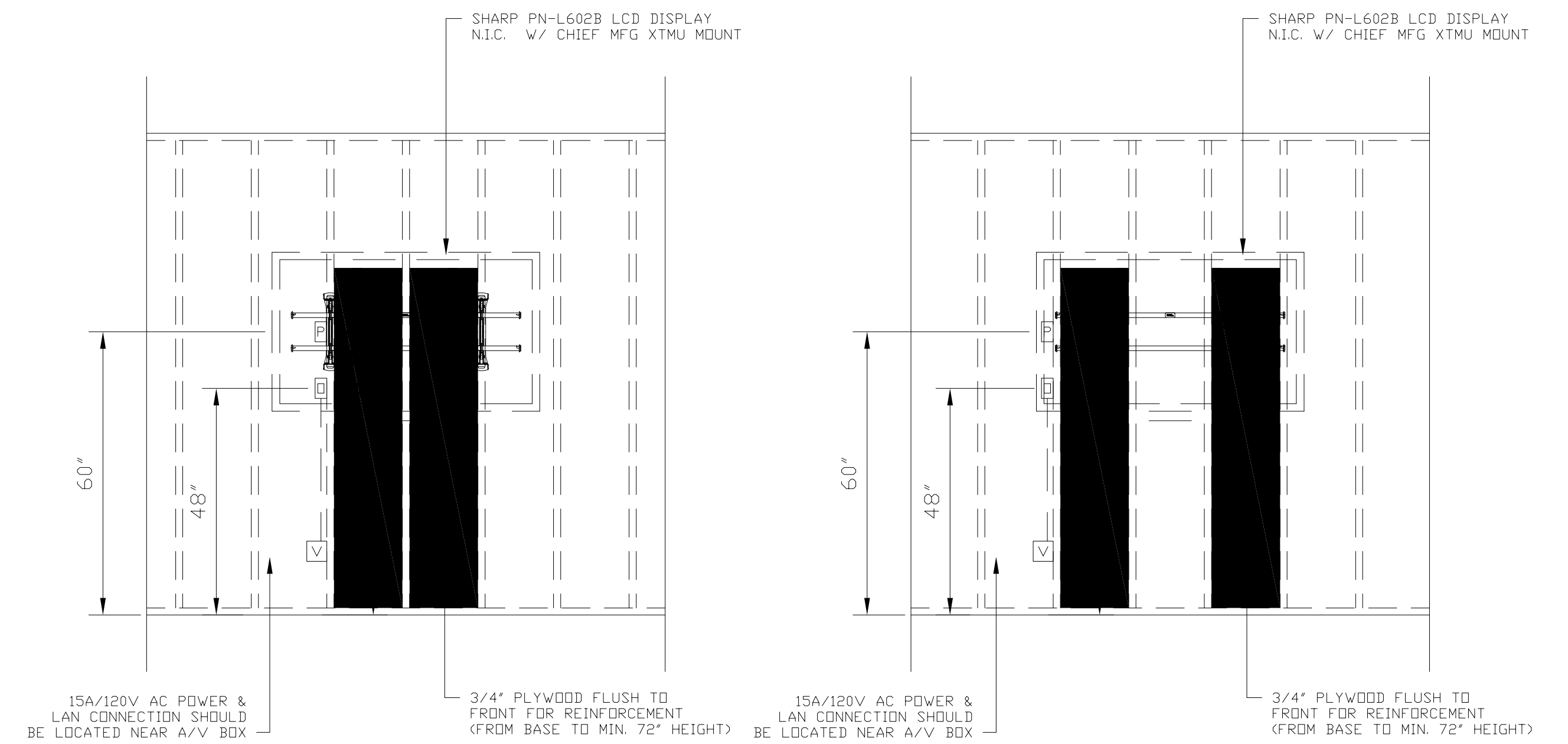
DO NOT SCALE DRAWINGS
CONTRACTOR SHALL FIELD VERIFY ALL JOB CONDITIONS AND DIMENSIONS. VARIATIONS THEREOF FROM THE DRAWINGS MUST BE REPORTED TO CONTRACT ADMINISTRATOR

DETAILS INDICATED ON THE DRAWINGS ARE REPRESENTATIVE AND TYPICAL. ALL ATTACHMENTS AND CONNECTIONS SHALL CONFORM TO BEST PRACTICE AND SHALL BE THE CONTRACTOR'S RESPONSIBILITY.

THE INTENT OF THE DRAWINGS IS TO INCLUDE ALL MATERIAL, LABOR, EQUIPMENT AND SERVICES NECESSARY FOR THE COMPLETION OF ALL WORK SHOWN, DESCRIBED OR REASONABLY IMPLIED.



FLOOR PLAN



ELEVATION (W/ STUD AT CENTRE OF DISPLAY)

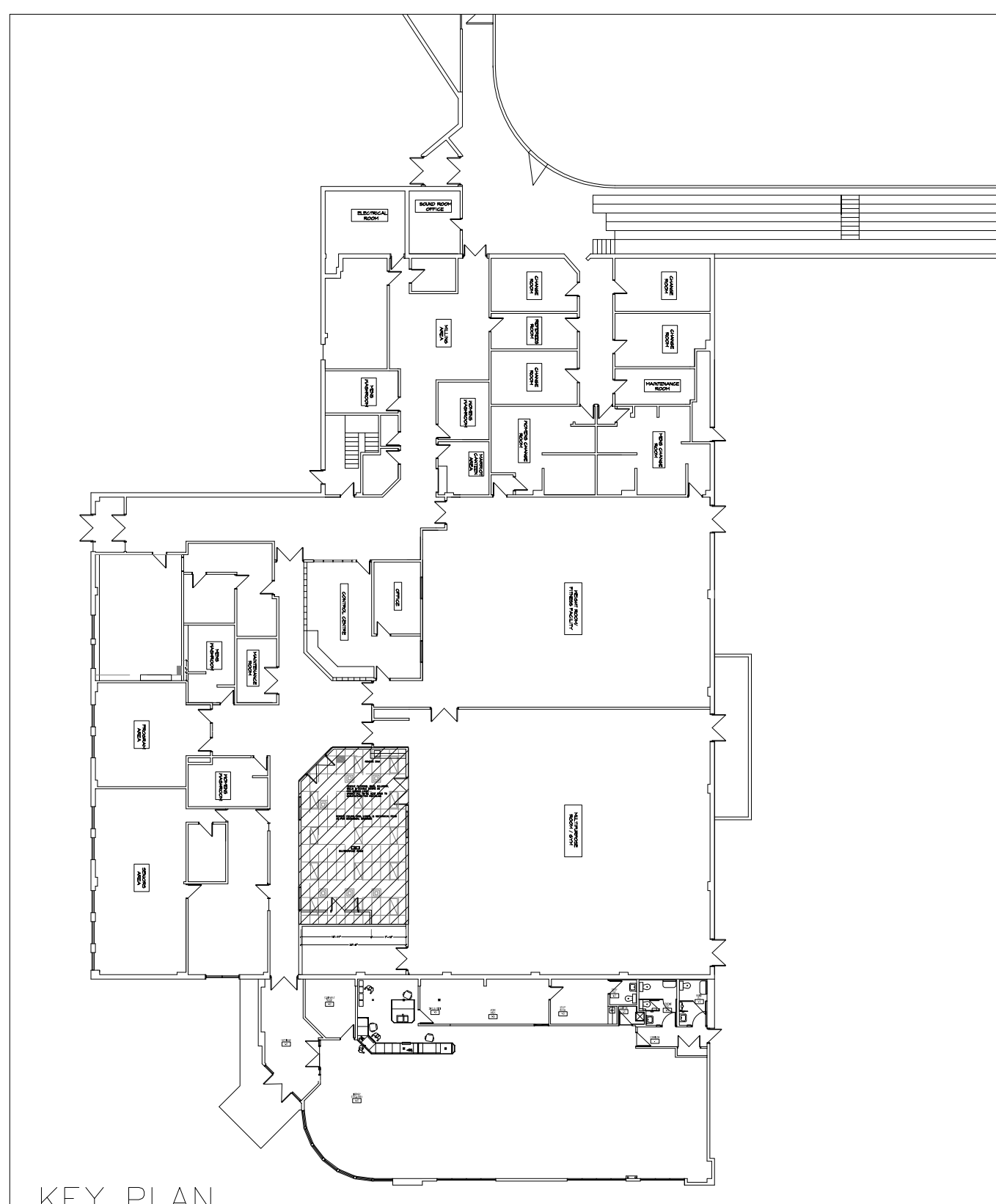
ELEVATION (W/ DISPLAY CENTRED BETWEEN STUDS)

(V) = A/V WALL PLATE - DOUBLE GANG BACKBOX W/ SINGLE GANG REDUCER PLATE, 1 1/2" CONDUIT TO BACKBOX ABOVE
(O) = OUTPUT PLATE - SINGLE GANG BACKBOX (OPEN, NO PLATE)
(P) = POWER - 15A/120V AC DUPLEX POWER (FOR LCD DISPLAY)

(V) = A/V WALL PLATE - DOUBLE GANG BACKBOX W/ SINGLE GANG REDUCER PLATE
(O) = OUTPUT PLATE - SINGLE GANG BACKBOX (OPEN, NO PLATE)
(P) = POWER - 15A/120V AC DUPLEX POWER (FOR LCD DISPLAY)

DRAWING INDEX

- A-1 FLOOR PLANS, KEY PLAN, DOOR & ROOM SCHEDULE LCD DETAILS, GENERAL NOTES
- A-2 REFLECTED CEILING PLAN, ELECTRICAL LAYOUT DEMOLITION REFLECTED CEILING PLAN, DEMOLITION PLAN,
- A-3 ELEVATIONS,
- A-4 HALLWAYS & DETAILS SECTIONS, MILLWORK NOTES
- MPR-E01 EXISTING MULTIPURPOSE ROOM (MPR) ELECTRICAL PLANS, SCHEDULE & SCOPE
- MPR-E02 ELECTRICAL SPECIFICATIONS AND SCHEDULE
- MPR-M01 PLUMBING DEMOTION AND NEW
- MPR-M02 HVAC DEMOLITION AND NEW
- MPR-M03 MECHANICAL SPECIFICATIONS



KEY PLAN

SCHEDULE OF FINISH HARDWARE PC12-501 ALLMAR DISTRIBUTORS

- Group # 2 Door Qty. = 1
- 1 LOCKSET ND70PD RHO 626 SC
 - 1 MORTISE CYLINDER 20-001 1 1/4" 626 SC
 - 1 AUTO OPERATOR 9531 STD AL LC
 - 2 36" ACTUATOR INGRESS'R - 3 XX
 - 1 ELECTRIC STRIKE 310-2 630 FA
 - 1 DOOR CORD W/CAP TSB-C * 18" SU
 - 1 KEY SWITCH MKA * SU

KEYSWITCH TO ACTIVATE AND DE-ACTIVATE OUTSIDE ACTUATOR WHEN ROOM IS LOCKED

- Group # 3 Door Qty. = 3
- 18 HINGES 3CB1 4 1/2" X 4" 652 IE
 - 3 LOCKSET ND70PD RHO 626 SC
 - 6 KICKPLATE .050" K10A 12" X 34" 320 SM
 - 6 OVERHEAD STOP 454S 630 GL
 - 6 MANUAL FLUSH BOLT FOR WOOD DOORS FB358-WD 626 IE
 - 6 MANUAL FLUSH BOLT FOR METAL DOORS FB458-12-MD 626 IE

- Group # 4 Door Qty. = 1
- 1 EXISTING STRIP DOOR D3
 - 1 WEATHER STRIP W-15 1 X 72", 2 X 84" CA KN
 - 2 AUTO. DOOR BOTTOM CT-52 NEOPRENE 36" CA KN
 - 1 SET ASTRAGAL W-40V X 84" CA KN
 - RE-USE BALANCE OF EXISTING HARDWARE

REPLACE DOOR CLOSURE WITH HORTON

ROOM FINISH SCHEDULE

AREA NO.	AREA NAME	FLOOR	BASEBOARDS				WALLS				CEILING		REMARKS
			NORTH	WEST	EAST	SOUTH	NORTH	WEST	EAST	SOUTH	HT.	MAT'L	
02	MULTIPURPOSE	RUBBER	R.C.B.	MILLWORK	R.C.B.	R.C.B.	PT 3/ST	PT 4	PT 4	PT 4	EXISTING	T & G	GWB AREA 10"-0" HIGH
03	CORRIDOR	EXISTING	R.C.B.	R.C.B.	R.C.B.	R.C.B.	PT 5	PT 5	PT 5	PT 5	EXISTING	T & G	
04	CORRIDOR/RECEPTION	EXISTING	R.C.B.	R.C.B.	R.C.B.	R.C.B.	PT 5	PT 5	PT 5	PT 5	EXISTING	T & G	
05	CORRIDOR	EXISTING	R.C.B.	R.C.B.	R.C.B.	R.C.B.	PT 5	PT 5	PT 5	PT 5			
06	CONTROL CENTRE	EXISTING	R.C.B.	R.C.B.	R.C.B.	R.C.B.	PT 5	PT 5	PT 5	PT 5			

DOOR SCHEDULE

NUMBER	NOMINAL SIZE	TYPE	MAT'L	CORE	FINISH	COLOR	HWDE	FRAME		U.L. FIRE RESISTANCE RATING	REMARKS
								MAT'L	FINISH		
D2	DOUBLE 36"x 84"	EXIST			PT 1		2		PT 1 INTERIOR		EXISTING DOOR & FRAME NEW HOWE INTERIOR PT 1 EXTERIOR PT 6
D3	DOUBLE 36"x 84"	EXIST			PT 1		4 EXIST		PT 1 INTERIOR		EXISTING DOOR & FRAME NEW HOWE INTERIOR PT 1 EXTERIOR EXISTING
D4	NEW DOUBLE 36"x 84"	2	PAINT	SOLID	PAINT TYPE 1	3		STEEL	PT 1		NEW DOUBLE DOOR,FRAME & HARDWARE
D5	NEW DOUBLE 36"x 84"	2	PAINT	SOLID	PAINT TYPE 1	3	LOCK	STEEL	PT 1		NEW DOUBLE DOOR,FRAME & HARDWARE
D6	NEW DOUBLE 36"x 84"	2	PAINT	SOLID	PAINT TYPE 1	3		STEEL	PT 1		NEW DOUBLE DOOR,FRAME & HARDWARE

GWB CEILING IN MULTIPURPOSE ROOM PAINT TYPE 8 INCLUDED VERTICAL GWB MEMBERS
ALL DOORS & FRAMES IN CORRIDORS TO BE PAINT TYPE 6 INCLUDING BOTH SIDES OF WINDOWS AND DOORS IN ROOM 06.
EXISTING COUNTER IN RECEPTION AREA EXISTING PLLAM TO BE REMOVED AND NEW PL. LAMINATE TO BE APPLIES TYPE 4
DOOR HARDWARE ALLMAR DISTRIBUTORS
WEATHER STRIPPING AROUND DOOR D3 TO REDUCE ACOUSTICAL PROBLEM
D3 CAULK & SEAL DOOR-FRAME W/ ACOUSTIC-CAULKING

NO.	DATE	DESCRIPTION	BY
2	APRIL 5, 2013	ADDENDUM #1	M.G.
1	MARCH 20, 2013	ISSUED FOR CONSTRUCTION	M.G.
0	MARCH 11, 2013	ISSUED FOR TENDER	M.G.

DRAWN BY: PRINTING DATE

The contractor is to verify dimensions and data noted herein with conditions on the site and is held responsible for reporting any discrepancy to the contract administrator for adjustment.



SYNERGY INTERIOR DESIGN INC.
13 Rosewarne Avenue WINNIPEG, MB Canada R2M 0V8
204 233 9159
malvine@synergyinteriors.com

DATE MARCH 11, 2013 SCALE 1/4" = 1'-0" REVISIONS

DRAWN BY M.G. CHECKED BY M.G.

MULTIPURPOSE/BOARDROOM UPGRADES PHASE 2
FORT ROUGE LEISURE CENTER 625 OSBORNE ST SOUTH
WINNIPEG, MANITOBA

PROJECT SHEET
FLOOR PLANS, KEY PLAN, DOOR & ROOM SCHEDULE
LCD DETAILS, GENERAL NOTES
BID OPPORTUNITY NO. 939-2012