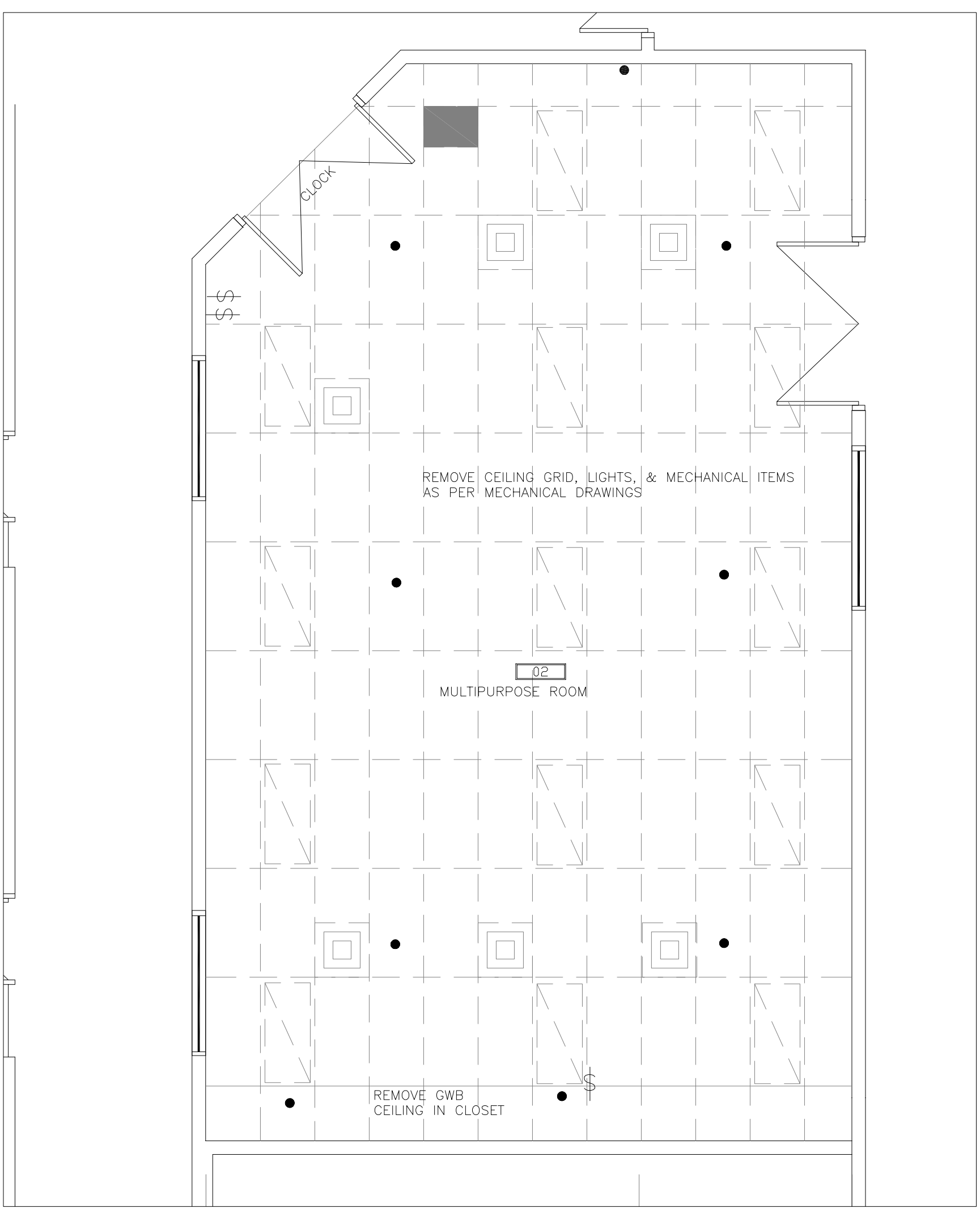
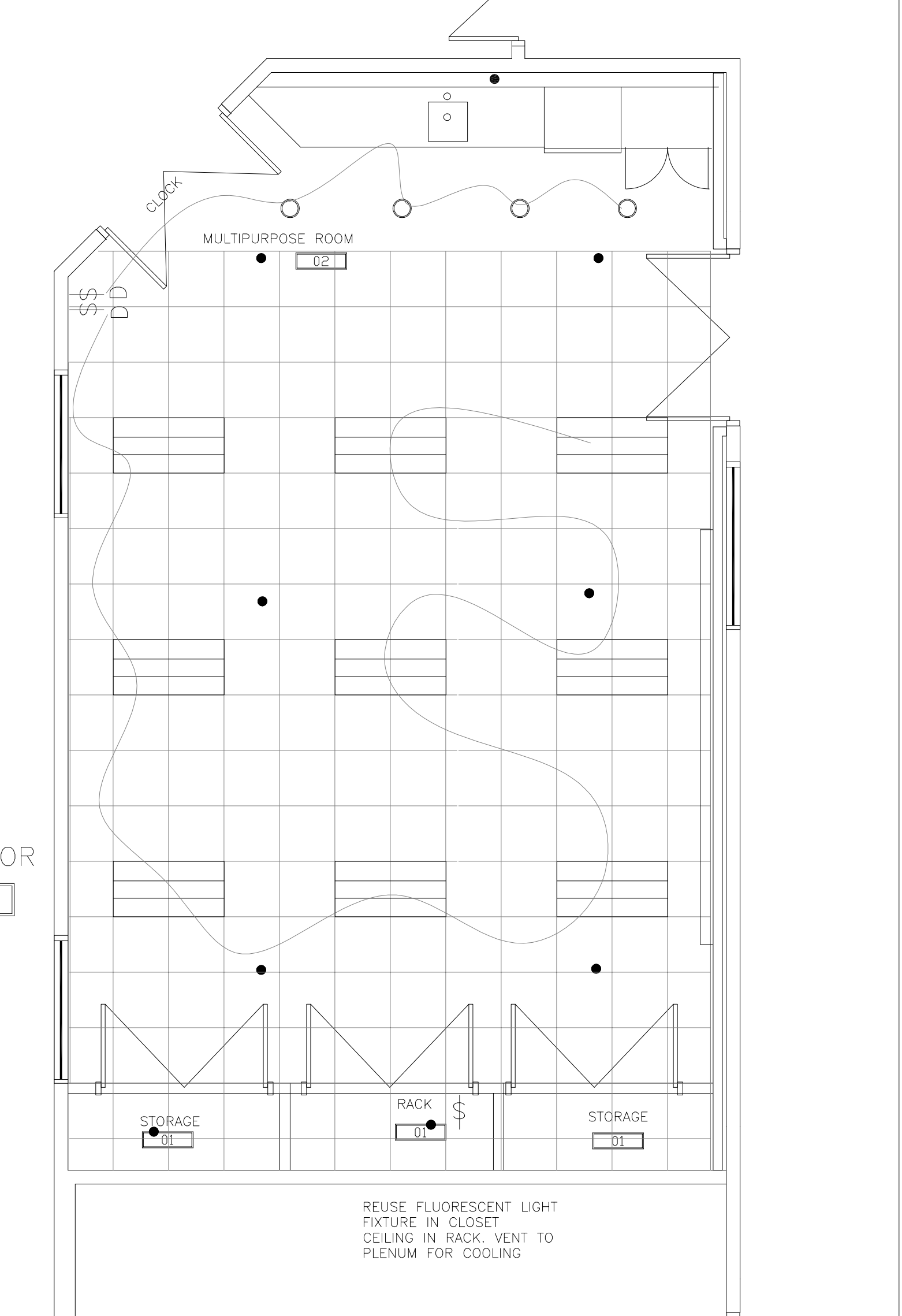


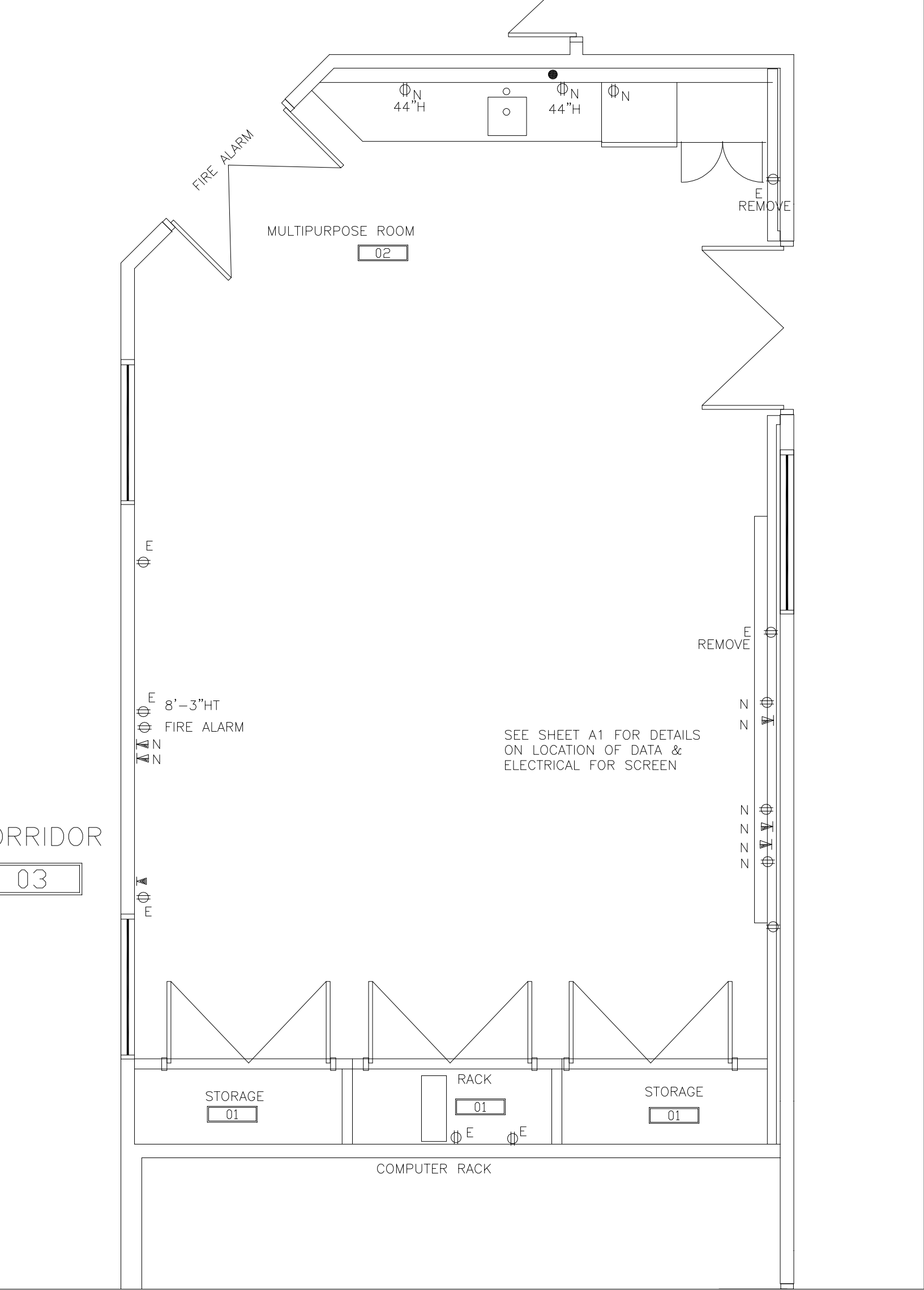
DEMOLITION PLAN



CEILING DEMOLITION PLAN



REFLECTED CEILING PLAN



ELECTRICAL LAYOUT

MATERIAL LIST

CARPET TILE
TANDUS
TOP SHELF 03606
COLOR DRAGONFLY 47020
2 BOXES NO INSTALLATION,
PLACE IN STORAGE
IN MULTIPURPOSE ROOM

RUBBER FLOORING
MFR: MONDO
3MM, ROLL
HARMONI LISSE/SMOOTH
HAS 60 EMERALD

RUBBER COVER BASE
JOHNSONITE WALL BASE
80 FAWN 4" MPR ONLY

RUBBER COVE BASE
JOHNSONITE WALL BASE
27 MIST 6" CORRIDORS

TYPE 3
WILSONART
FONTHILL PEAR 10745-60
MPR ONLY

TYPE 4
NEVAMAR
BOTANICAL ALLUSION
AL5002T
FOR RECEPTION DESK

SOLID SURFACE
SMDS DIMASTONE
DESERT SPICE 1 1/2" THICK
POLISH SURFACE
MATCHING TILE FOR BACKSPASH
GROUT
FLEXITILE BEACH BUFF 556

STONE FOR WALL
LEDGER STONE MALBROS #34
COMPLETE WITH SEALER

MELAMINE
PANOLAM
WHITE

ALL PAINTED AREAS TO HAVE 3 COATS OF PAINT

PAINT TYPE 1
BENJAMIN MOORE
NO VOC PAINT
CC-540 STAMPED CHAGRIN
EGGSHELL

PAINT TYPE 2
DELETE THIS NUMBER

PAINT TYPE 3
ICI LIFE MASTER
A1798 BRUSHWOOD
EGGSHELL

PAINT TYPE 4
BENJAMIN MOORE
OC-32 TAPESTRY BEIGE
NO VOC PAINT
EGGSHELL

PAINT TYPE 5
BENJAMIN MOORE
NO VOC PAINT
OC-37 GLACIER WHITE
EGGSHELL

PAINT TYPE 6
DULUX, TRAVEN GREEN
500G 05/ 063 A1939
EGGSHELL

PAINT TYPE 7
DULUX
PALE CLOVER A1054
EGGSHELL

PAINT TYPE 8
DULUX LIFE MASTER
WHITE HID-HIDING RM
98YY 82/ 022
FLAT

3FORM
STYLE THATCH 50%
FINISH FRONT SANDSTONE
BACK SPX FROST
1/2" GAUGE

SURFACE RESTORATION OF TERRAZZO FLOORING TO BE PERFORMED BY A SPECIALIST WITH SPECIFIC EQUIPMENT IN ACCORDANCE WITH THE TILE & MARBLE ASSOCIATION OF CANADA

AREAS WITH CONCRETE FILLER TO BE REMOVED AND REPAIRED TO LOOK AS CLOSE TO FINISHED TERRAZZO FLOOR. SPECIFICATIONS ANTEX WESTERN

CORRIDOR WALL TILE
THESIZEM
COLOR AVORIO
SIZE: 3600 X 1200 X 3 MM
SCHLUTER STAINLESS STEEL EDGE DETAIL AT ALL CUT EDGES E-30 TRIM SHEET LAYOUT TO BE REVIEWED WITH CONTRACT ADMINISTRATOR TO CUTTING ANY SHEETS AREAS AS NOTED ON PLAN SUPPLIED BY CARRARA TILE. THIS PRODUCT COMES FROM ITALY 8 TO 12 WEEKS DELIVERY

KINDRED UNDERMOUNT SINGLE SINK 18 GAUGE STAINLESS STEEL 8" DEEP, 17", 17" 1 ONLY MULTIPURPOSE ROOM

DELTA BAR FAUCET TRINISC SINGLE HANDLE MODEL: 9159-DST STAINLESS STEEL FINISH

LIGHTING LEGEND

SWITCH BLACK WITH STAINLESS STEEL COVER PLATES

RECESSED FLUORESCENT
MFR: SHINE
MODEL: 3324 D1 ST T332 S 1 1 E
SIZE: 2' X 4'
STANDARD T-BAR LAMPING 3 T8 HOUSING STANDARD 22G. WIRING 1 CCT VOLTAGE 120V, OR 277 VOLTS

LIGHTTOLIER LED
MODEL: CBLD201/c6L1520DL30KM
BASE FINISH CCLW COMFORT CLEAR, WHITE

RELOCATE EXISTING DIFFUSERS AS NOTED
NEW AIR RETURN AS PER CODE

SPRINKLER HEAD

POWER & SYSTEMS LEGEND

DUPLEX OUTLET

ISOLATED GROUND OUTLET

DATE/COMMUNICATION OUTLET

N NEW
E EXISTING
R REMOVE

T-BAR ARMSTRONG PRELUDE XL WHITE ALUMINUM 2' X 2' 1/8" EXPOSED TEE SYSTEM

ACOUSTIC CEILING TILES
ARMSTRONG CIRRUS, ANGLED REGULAR 2' X 2' X 3/4" 1/8" EXPOSED TEE SYSTEM WHITE

1. STANDARDS
AWMAC PREMIUM GRADE MILL STANDARD LATEST EDITION

2. CONSTRUCTION
- A) DRAWER BACKS, AND BOTTOMS TO BE 1/2" BIRCH OR FIR
 - B) ALL EXTERIOR SURFACES (INCLUDING TOPS, GABLES, BOTH SIDES OF DRAWER AND DOOR FRONTS AND SELF EDGING, ETC.) TO BE FINISHED AS NOTED FOR SPECIFIC MILLWORK.
 - C). ALL SUPPORT BLOCKING WITHIN MILLWORK TO BE CONCEALED FROM VIEW.
 - D) ALL UNITS TO BE FIRMLY SCRIBED WITHIN PARTITIONS.
 - E) ALL CONSTRUCTION TO BE 3/4" PLYWOOD OR PARTICAL BOARD.
3. SHOP DRAWINGS
SHOP DRAWINGS TO BE DONE AND SENT TO CONTRACT ADMINISTRATIONS FOR APPROVAL PRIOR TO CONSTRUCTION.
4. MILLWORK HARDWARE
- DRAWER SLIDES BLUM 56H TANDEM FULL EXTENSION SLIDE WITH BLUN MOTION DEPTH TO MATCH CABINET SIZE UNDER MOUNT
 - HINGES HETTICK CONCEALED HINGES, NO 790 NICKEL FINISH 110 DEGREES.
 - PULLS HAFELE MODEL: 117.05.620 8" LONG, STAINLESS STEEL PAGE 194
 - TOWEL RACK HAFELE: MODEL: 510.06.725 MOUNTES TO SIDE OF CABINET SIZE: 5 1/2", 1 1/2" CHROME POLISHED
 - WARDROBE RAIL HAFELE: MODEL: 801.42.900 SIZE: 1 3/8" DIA MATT ALUMINUM ALUMINUM ANODIZED MODEL: 803.56.900
- C/W SUPPORTS

0	MARCH 11, 2013	ISSUED FOR TENDER	M.G.
---	----------------	-------------------	------

NO.	DATE	DESCRIPTION	BY
-----	------	-------------	----

DRAWN BY
PRINTING DATE

The contractor is to verify dimensions and data noted herein with conditions on the site and is held responsible for reporting any discrepancy to the contract administrator for adjustment.



SYNERGY INTERIOR DESIGN INC.
13 Rosewarne, Avenue WINNIPEG, MB Canada R2M 0V8
204 233 9159
malvine@synergyinteriors.com

DATE MARCH 11, 2013 SCALE 1/4"= 1'-0" REVISIONS
DRAWN BY M.G. CHECKED BY M.G.

MULTIPURPOSE/BOARDROOM UPGRADES PHASE 2
FORT ROUGE LEISURE CENTER 625 OSBORNE ST SOUTH
WINNIPEG, MANITOBA

PROJECT SHEET
REFLECTED CEILING PLAN, ELECTRICAL LAYOUT
DEMOLITION REFLECTED CEILING PLAN, DEMOLITION PLAN
BID OPPORTUNITY NO. 939-2012 DWG. A-2