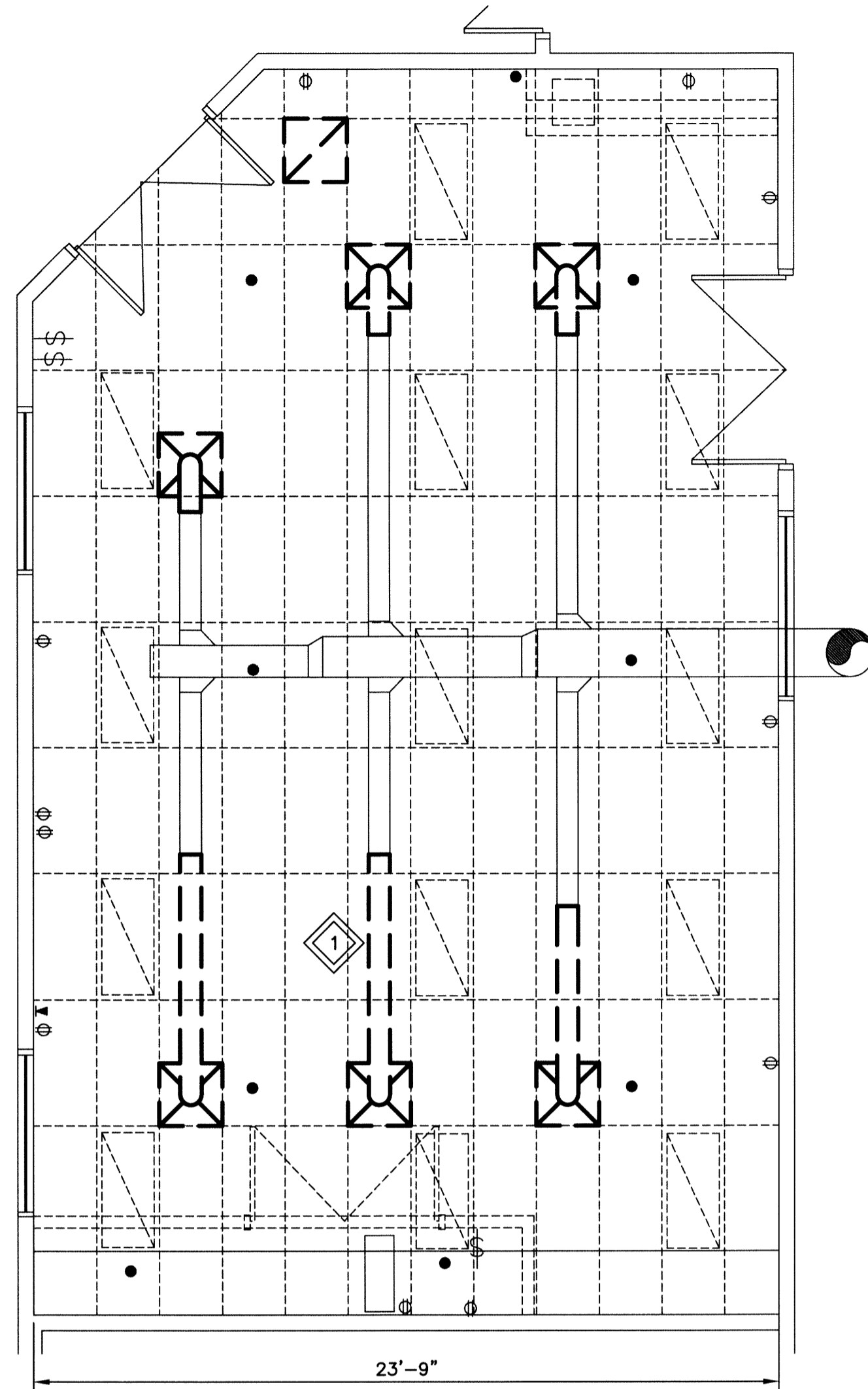
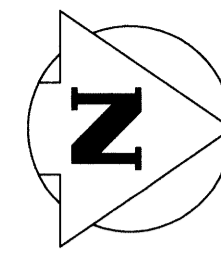
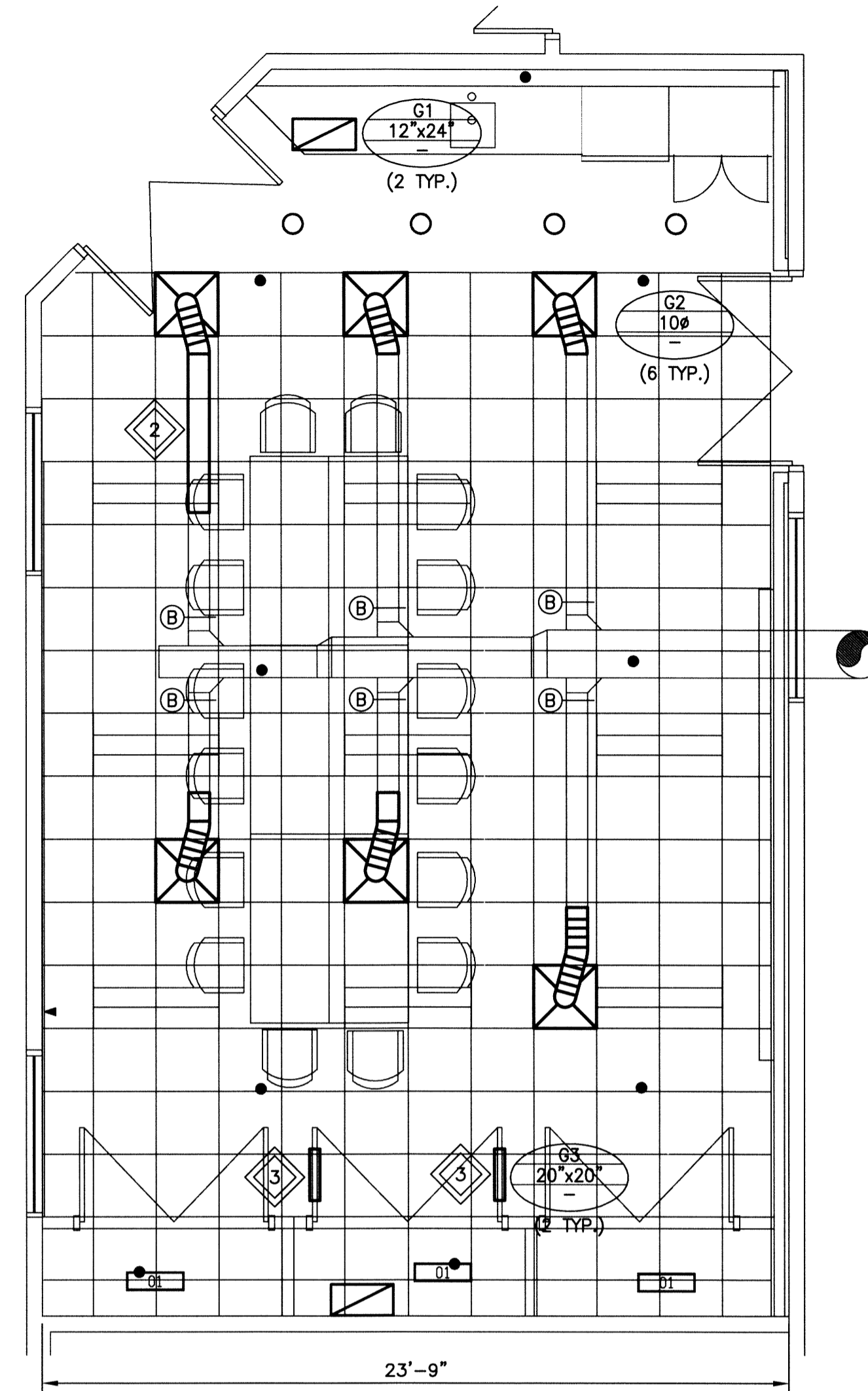
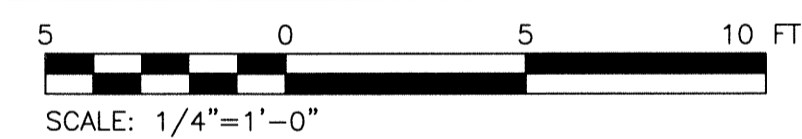


File Name: P:\Projects\2012\12-2326-001\DocControl\ToBeIssued\DWG\12-2326-001\_MPR-M02-Rev 0.dwg - Tab: M02 Plotted By: dDeroche 13/03/11 [Mon 8:40am]



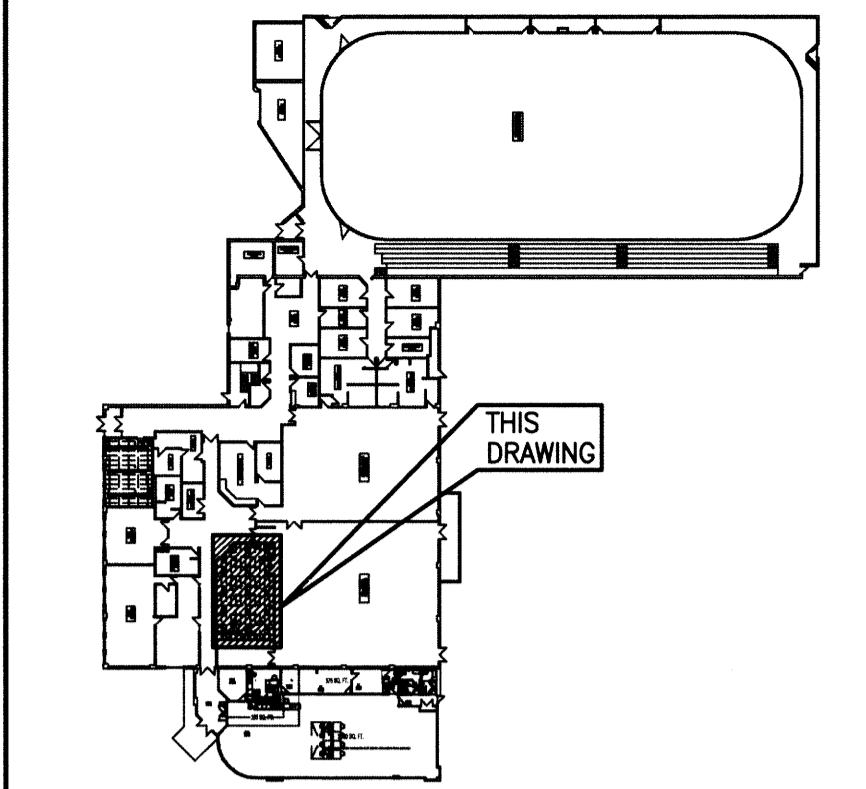
**1** MULTI-PURPOSE ROOM HVAC PLAN - DEMOLITION



**2** MULTI-PURPOSE ROOM HVAC PLAN - NEW



GRILLE SCHEDULE		
GRILLE No.	PRICE DESIGNATION	COMMENTS
G1	12"x24"/B0/F/A/B12	EGG CRATE RETURN GRILLE
G2	10"/24"x24"/SCD/31/3C/B12	4-WAY SUPPLY GRILLE
G3	20"x20"/STG1/BF/B15	DOOR GRILLE



KEYPLAN

**GENERAL NOTES:**

- PERFORM WORK IN ACCORDANCE WITH ALL APPLICABLE CODES AND REGULATIONS.
- REVIEW EQUIPMENT LOCATIONS WITH CONTRACT ADMINISTRATOR PRIOR TO INSTALLATION.
- EQUIPMENT LOCATIONS, DUCT, AND PIPE ROUTING INDICATED ON THE DRAWINGS IS APPROXIMATE ONLY. CONFIRM IN THE FIELD. REROUTE DUCTWORK AND PIPING AS REQUIRED TO ELIMINATE FIELD INTERFERENCES. WITH BUILDING STRUCTURES, ELECTRICAL, ETC. CONFIRM CHANGES WITH CONTRACT ADMINISTRATOR. COORDINATE WORK WITH ALL SUBTRADES. WHERE DIMENSIONS ARE INDICATED FOR PIPING, DUCTWORK, DUCT SIZES, EQUIPMENT SIZES, ETC. THESE ARE FOR BIDDING PURPOSES ONLY. THE CONTRACTOR IS RESPONSIBLE TO VERIFY ALL DIMENSIONS IN THE FIELD PRIOR TO ORDERING EQUIPMENT AND COMMENCING INSTALLATION WITHOUT EXTRA CHARGES TO THE PROJECT. THE CONTRACTOR IS RESPONSIBLE TO ENSURE ALL EQUIPMENT, DUCTWORK, AND PIPING FITS IN THE SPACE AVAILABLE AND TO MAINTAIN THE GENERAL DESIGN INTENT FOR THE SYSTEMS.
- CONFORM TO SMACNA STANDARDS FOR SUPPLY AND INSTALLATION OF DUCTWORK.
- MODIFY SPRINKLER SYSTEM TO SUIT THE NEW CEILING. SPRINKLER MODIFICATIONS TO BE DESIGNED BY A QUALIFIED SPRINKLER ENGINEER TO MEET NFPA 13 AND ALL REQUIREMENTS OF THE AUTHORITY HAVING JURISDICTION. PROVIDE SPRINKLER SHOP DRAWING FOR REVIEW OF THE CONTRACT ADMINISTRATOR.

**KEYNOTES:**

- REMOVE PORTIONS OF EXISTING DUCTWORK AS SHOWN (TYP.)
- INSTALL NEW DUCTWORK AS SHOWN (TYP.)
- PROVIDE NEW DOOR GRILLES.

**LEGEND:**

- EXISTING DUCTWORK TO BE REMOVED
- EXISTING DUCTWORK TO REMAIN
- NEW DUCTWORK
- BALANCE DAMPER
- GRILLE NO.
- NECK SIZE (mm)
- AIR FLOW
- FLEXIBLE DUCTWORK

SCALE VERIFIED BY: *JL*



B.M.	:	
ELEV.	:	
DESIGNED BY	TJC	CHECKED BY PSS
DRAWN BY	TJC	APPROVED BY <i>[Signature]</i>
HOR. SCALE:	AS SHOWN	RELEASED FOR CONSTRUCTION:
VERTICAL:	.	
NO.	REVISIONS	DATE BY DATE
0	ISSUED FOR TENDER	13/03/11

**KGS GROUP**  
CONSULTING ENGINEERS

ENGINEER'S SEAL

CONSULTANT DRAWING NO.  
**MPR-M02**

**THE CITY OF WINNIPEG**  
PLANNING, PROPERTY AND DEVELOPMENT DEPARTMENT

PROJECT TITLE  
**MULTI-PURPOSE ROOM, CORRIDORS AND RECEPTION COUNTER UPGRADES FOR FORT ROUGE LEISURE CENTRE**  
BID OPPORTUNITY NO. 939-2012

HVAC DEMOLITION AND NEW

SHEET 001 OF 001  
COMPUTER FILE NAME: 12-2326-001\_MPR-M02  
CITY DRAWING NUMBER