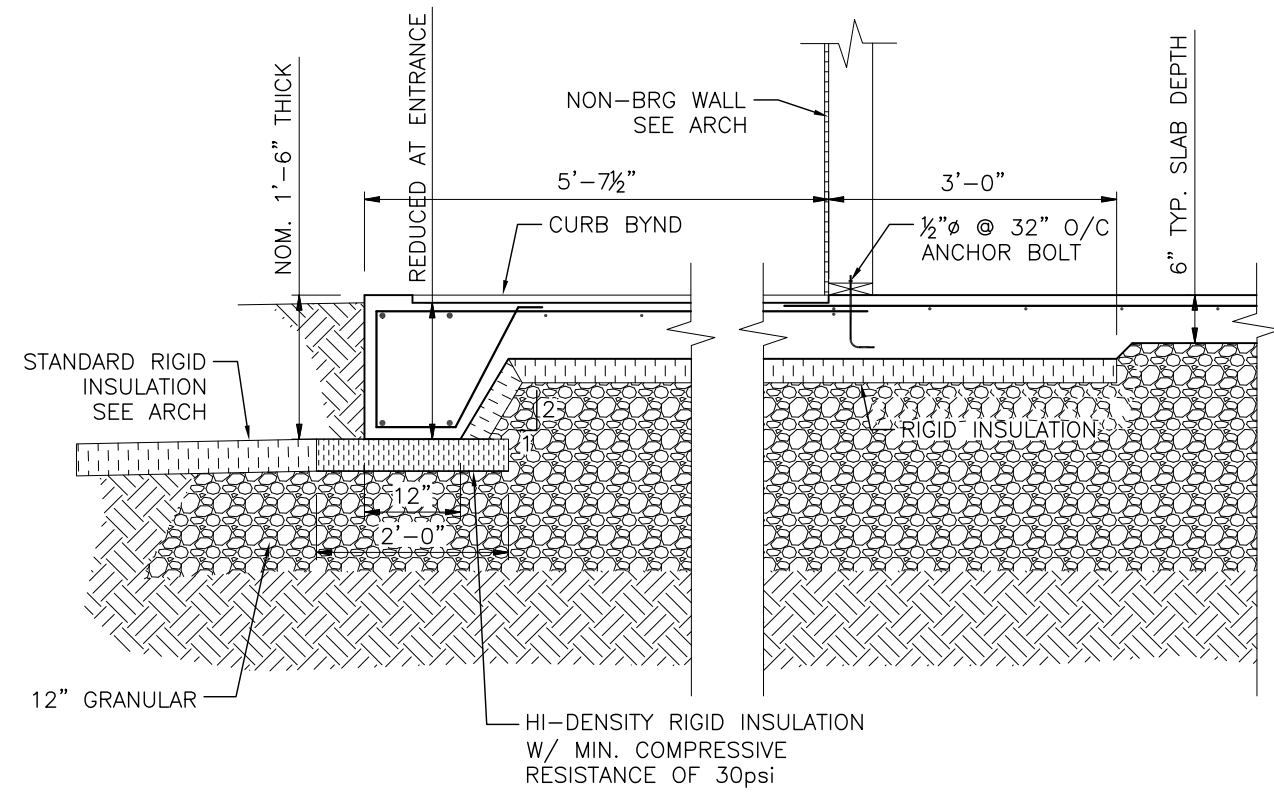


7" CONCRETE SLAB ON
12" COMPACTED GRANULAR
R/W 10M @ 12" O/C EA. WAY TOP
THICKEN SLAB 6" UNDER STUDWALL
SEE DETAIL SECTION 1/S-1

6" CONCRETE SLAB ON
12" COMPACTED GRANULAR
R/W 10M @ 12" O/C EA. WAY TOP
THICKEN SLAB 6" UNDER STUDWALL
SEE DETAIL SECTION 1/S-1

HI-DENSITY RIGID INSULATION
W/ MIN. COMPRESSIVE
RESISTANCE OF 30psi

RIGID INSULATION



1 SECTION
S-1 1/2" = 1'-0"

FOUNDATION & GROUND FLOOR PLAN

3/8" = 1'-0"

DESIGN LOADS:

LIVE LOAD: 50 PSF

0	ISSUED FOR TENDER & CONSTRUCTION	2013.11.21	DJP
No.	REVISION	DATE	BY

DRAWING TITLE
**FOUNDATION PLAN
& SECTION**

WOLFROM ENGINEERING LTD CONSULTING ENGINEERS 345 WARDLAW AVENUE WINNIPEG, CANADA R3L 0L5 (204)452-0041 FAX: 284-8680 E-Mail: info@wolfromeng.com	DATE 21-NOV-2013	SEAL
	SCALE AS NOTED	
JOB TITLE COMFORT STATION WINNIPEG TRANSIT	FILE NO. W13-126	
	DRAWING NO. S-1	