



NOTES #:

1. OVERHEAD UTILITY POWER SERVICE FROM EXISTING MANITOBA HYDRO UTILITY POLE TO BUILDING BY MANITOBA HYDRO. INCLUDING NEW UTILITY POLE.

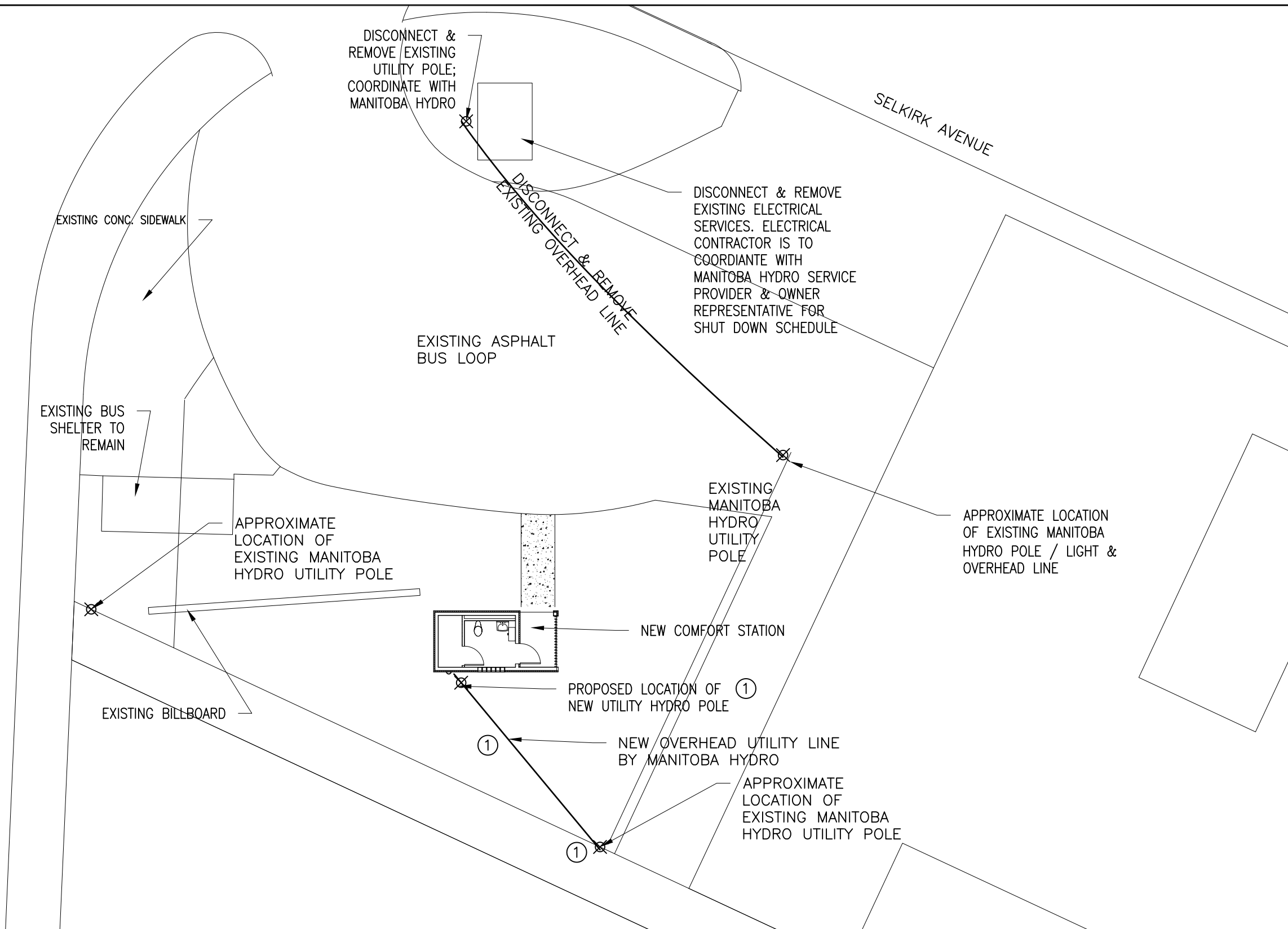
UTILITY COST CONTRIBUTION REQUIRED BY CITY OF WINNIPEG. THIS UTILITY COST SHALL BE CARRIED BY A CASH ALLOWANCE BY THE ELECTRICAL CONTRACTOR OF UP TO \$5000 FOR THE OWNER'S CONTRIBUTION.

UTILITY SERVICE COORDINATION BY ELECTRICAL CONTRACTOR. ELECTRICAL CONTRACTOR IS REQUIRED TO COORDINATE WITH MANITOBA HYDRO BEFORE ROUGH IN AND PLACEMENT OF METERING SOCKET, SERVICE HEAD & MAST PRIOR TO ANY EQUIPMENT PURCHASE.

LIABILITY ISCLAIMER NOTICE

THE DIGITAL INFORMATION PROVIDED IS SCHEMATIC AND SHOULD BE USED FOR PLANNING PURPOSES ONLY. ITS ACCURACY SHOULD NOT BE CONSIDERED AS PRECISE NOR SHOULD IT BE CONSTRUED AS AS-BUILT INFORMATION. INFRASTRUCTURE, BUILDING LOCATION & GRADE ELEVATIONS SHOULD BE VERIFIED BY SITE INSPECTION, FIELD SURVEYING AND REFERENCING AS-BUILT DRAWINGS. THE CITY OF WINNIPEG SHALL NOT IN ANY WAY SUFFER ANY LIABILITY WHATSOEVER TO ANY PARTY FOR ANY INJURY, LOSS OR DAMAGES SUFFERED BY SUCH PARTY ARISING FROM THE USE OF, OR RELIANCE UPON, THIS INFORMATION.

McPHILLIPS STREET



REV	DATE	DESCRIPTION	BY	CHK	APP
0	DEC. 5/13	ISSUED FOR TENDER & CONSTRUCTION	PY	SN	



MEG-A-RON ENGINEERING SERVICES  
22 MITCHELL BAY  
ST. ANDREWS, MANITOBA  
R1A 3A3

**APEGM**  
Certificate of Authorization  
Meg-A-Ron Engineering Services  
No. 4401 Date: APRIL 30, 2013

DRAWN BY: PY  
DATE: NOVEMBER 21/13  
SCALE: 1/16" = 1' 0"  
CHECKED BY: -- DATE: --  
APPROVED BY: -- DATE: --

CLIENT:  
VICTOR SUEN ARCHITECT  
23 STORMANT DRIVE  
WINNIPEG, MANITOBA

PROJECT:  
WINNIPEG TRANSIT - COMFORT STATION FOR  
WINNIPEG TRANSIT McPHILLIPS LOOP &  
CAMBRIDGE LOOP, WINNIPEG, MANITOBA

REFERENCE DRAWINGS	
DRAWING TITLE: ELECTRICAL SITE PLAN McPHILLIPS LOOP	
DRAWING NO: SE-01	REVISION 0

**Sumitech Services Limited**  
TECHNICAL SERVICES PROJECT MANAGERS  
166 eugenie street  
winnipeg, manitoba  
R2H 0X6  
tel: 204 235 0940  
fax: 204 235 0943  
email: sumitech3@shaw.ca