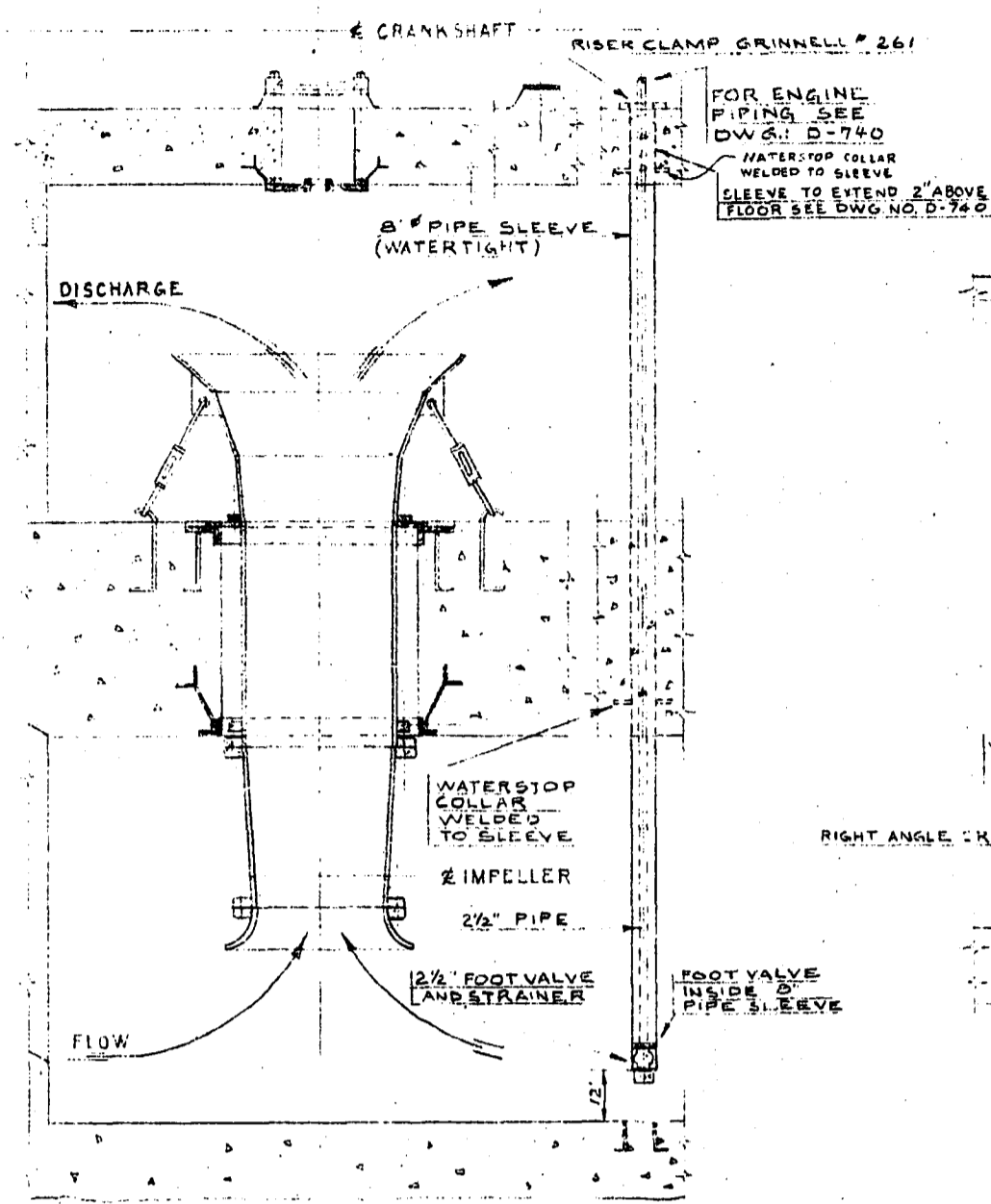
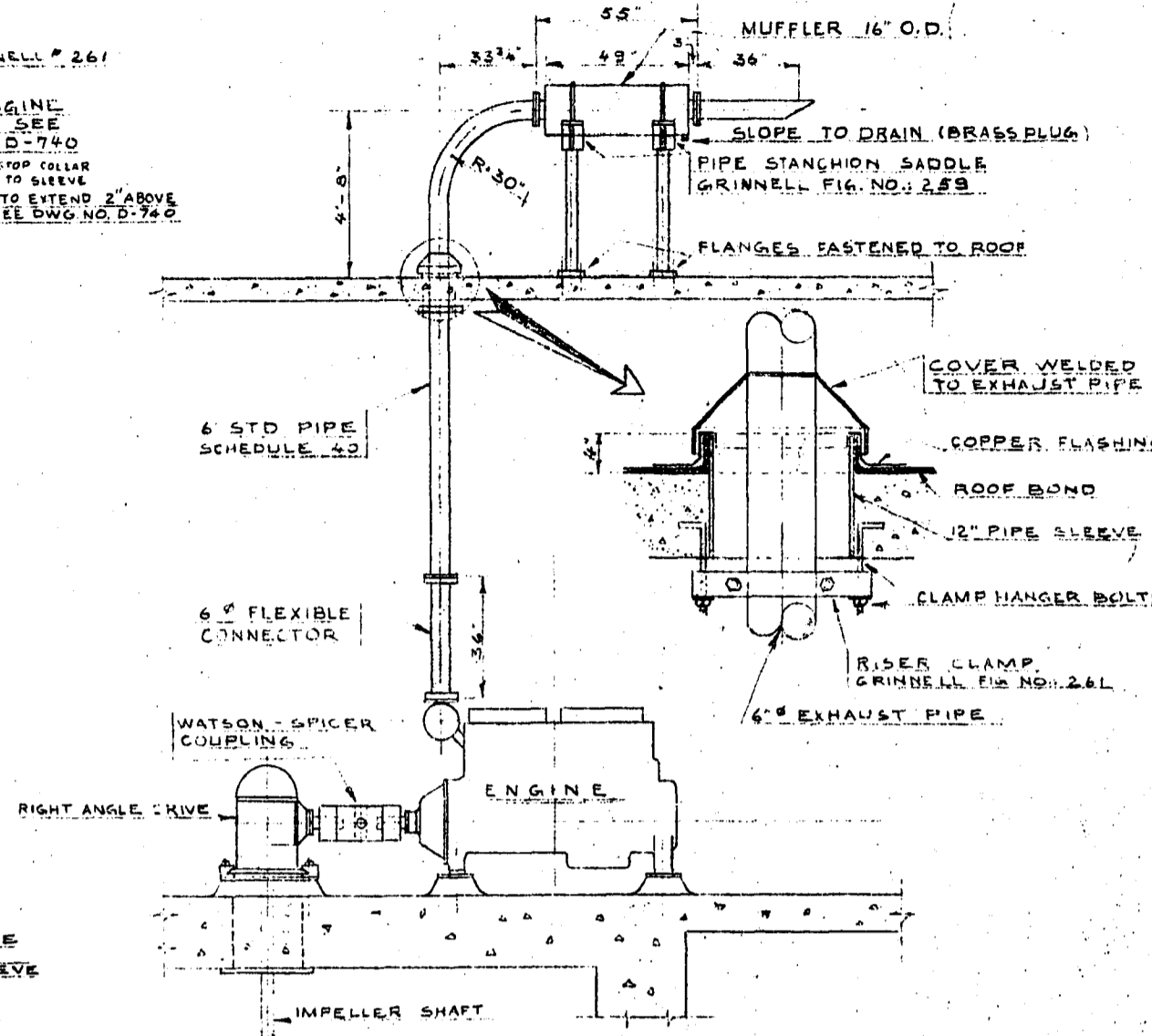


APPENDIX B

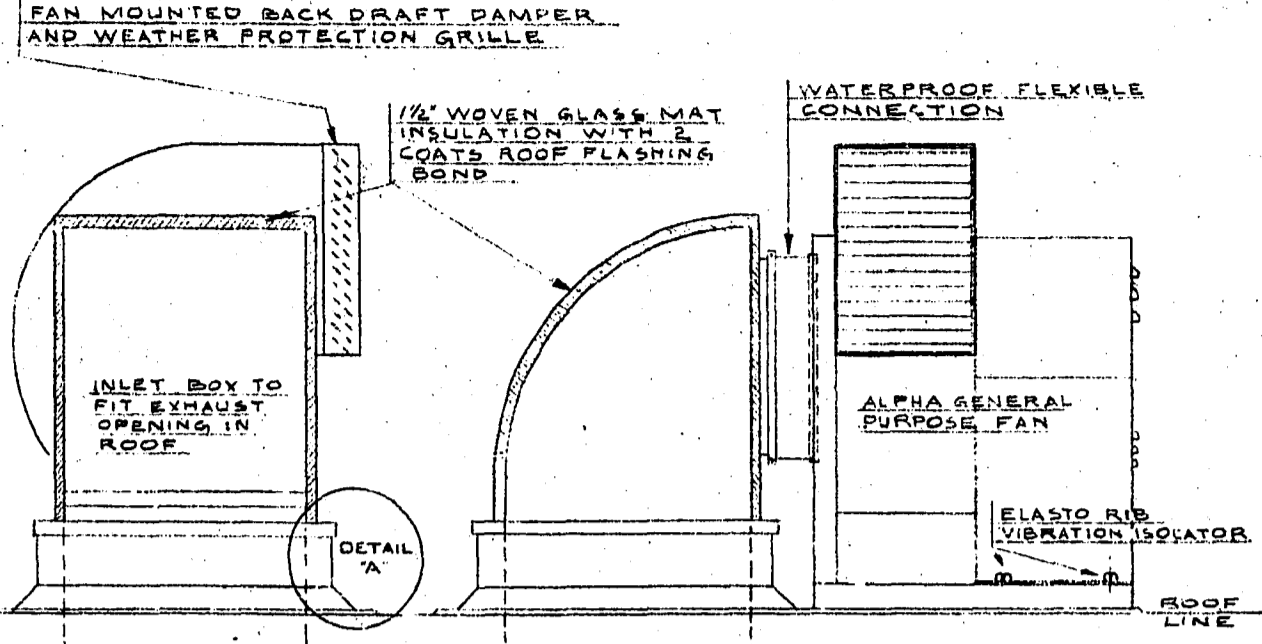


PUMPHOUSE SECTION A---A
FOR DIMENSIONS SEE SHOP DRAWINGS
SCALE 3/4" = 1'-0"

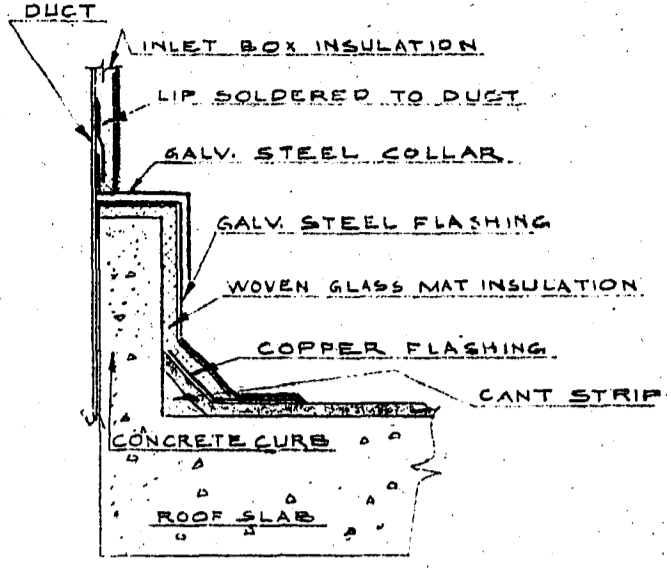


VIEW B---B
FOR DIMENSIONS SEE SHOP DRAWINGS
SCALE 3/4" = 1'-0"

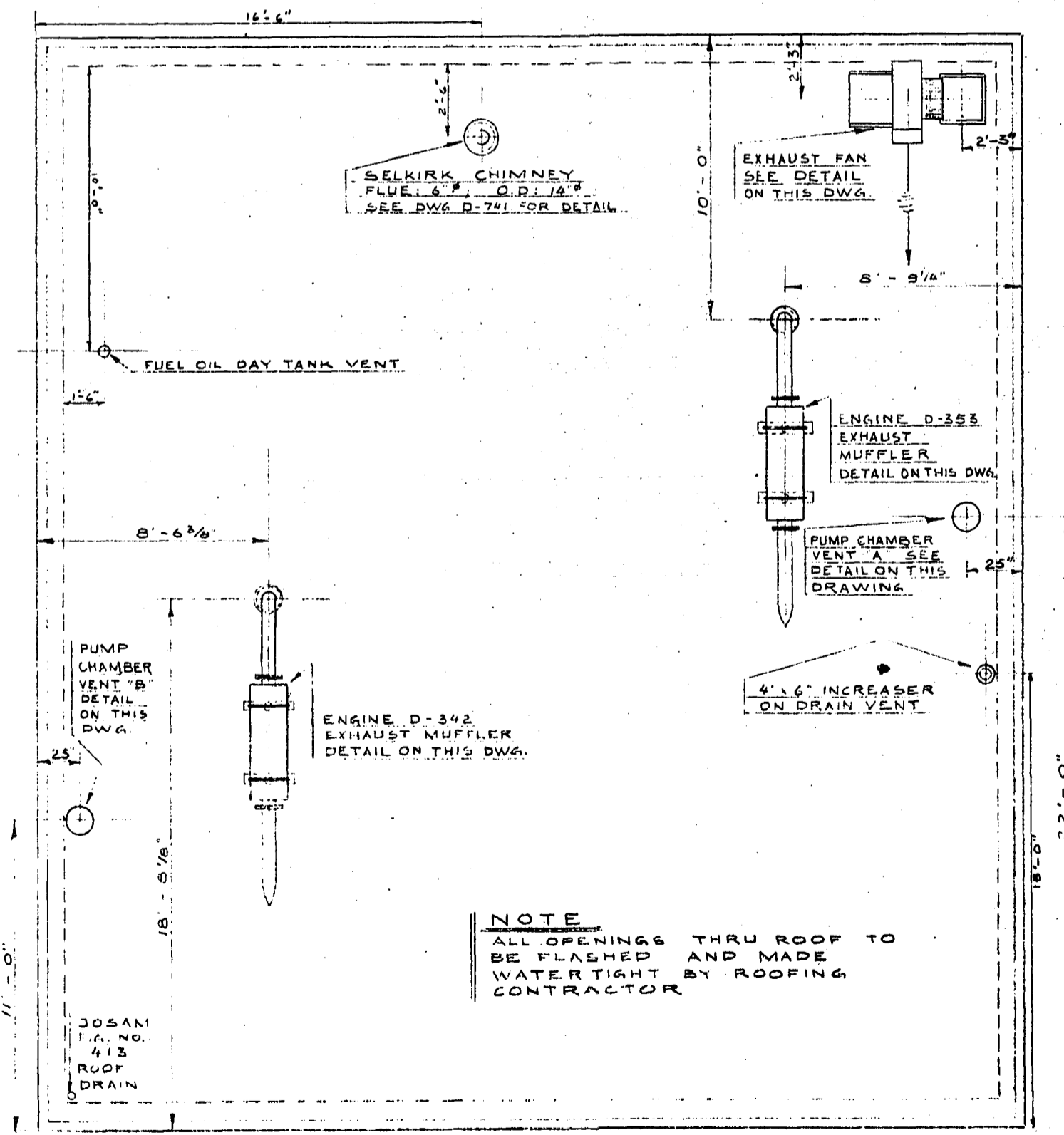
NOTE:
SECTION 'A-A' AND VIEW 'B-B' APPLY ALSO TO OTHER ENGINE AS FAR AS BOTH ARE SIMILAR



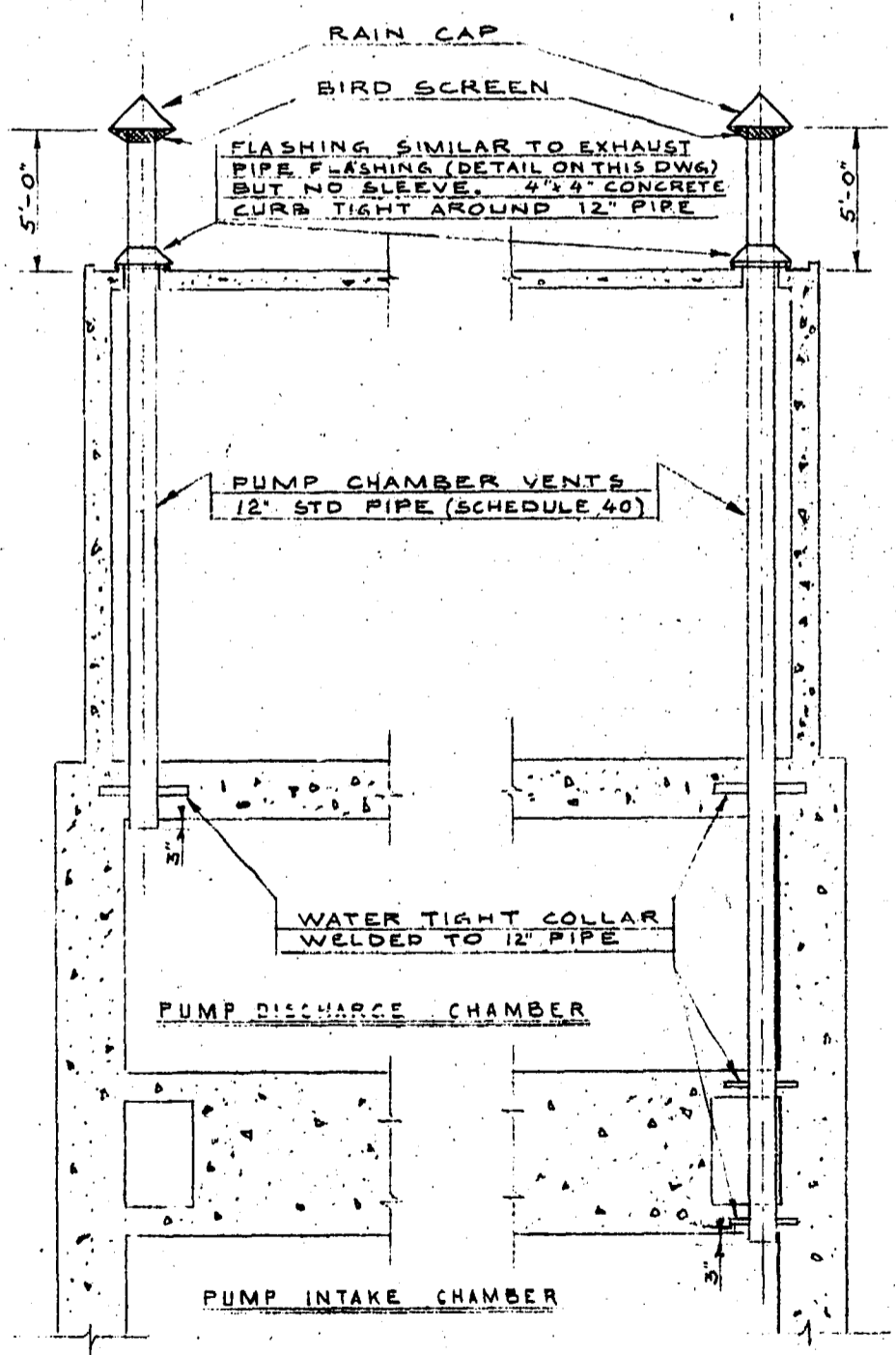
EXHAUST FAN MOUNTING DETAIL
NOT TO SCALE



NOTE:
TWO EXHAUST FANS ARE REQUIRED THE LOCATION OF ONE IS SHOWN IN ROOF PLAN ON THIS DWG. THE OTHER FAN IS SHOWN ON DWG. NO. 738. FAN TO BE MOUNTED THERE AS SHOWN IN DETAIL ON THIS DRAWING



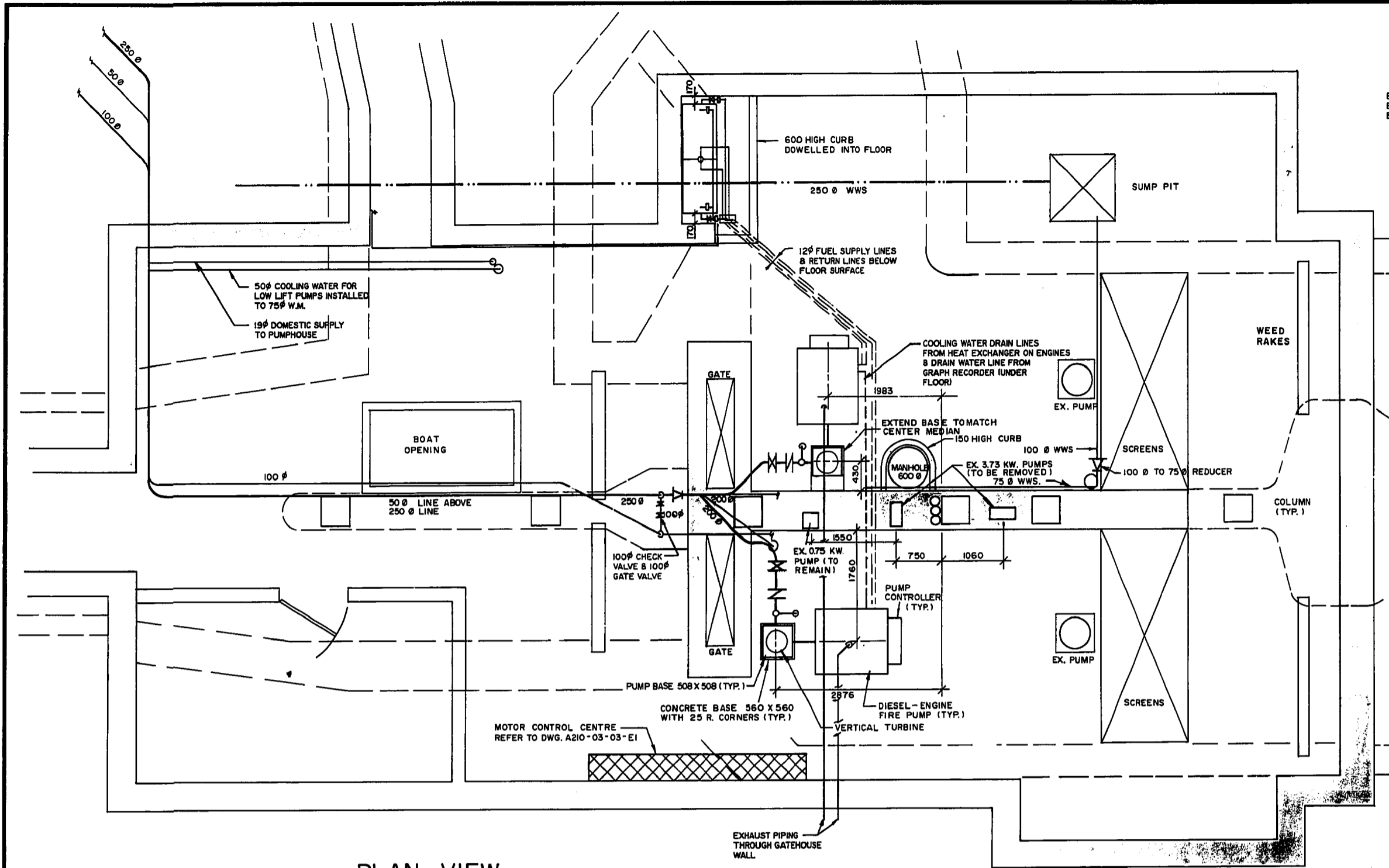
ROOF PLAN
SCALE 3/4" = 1'-0"



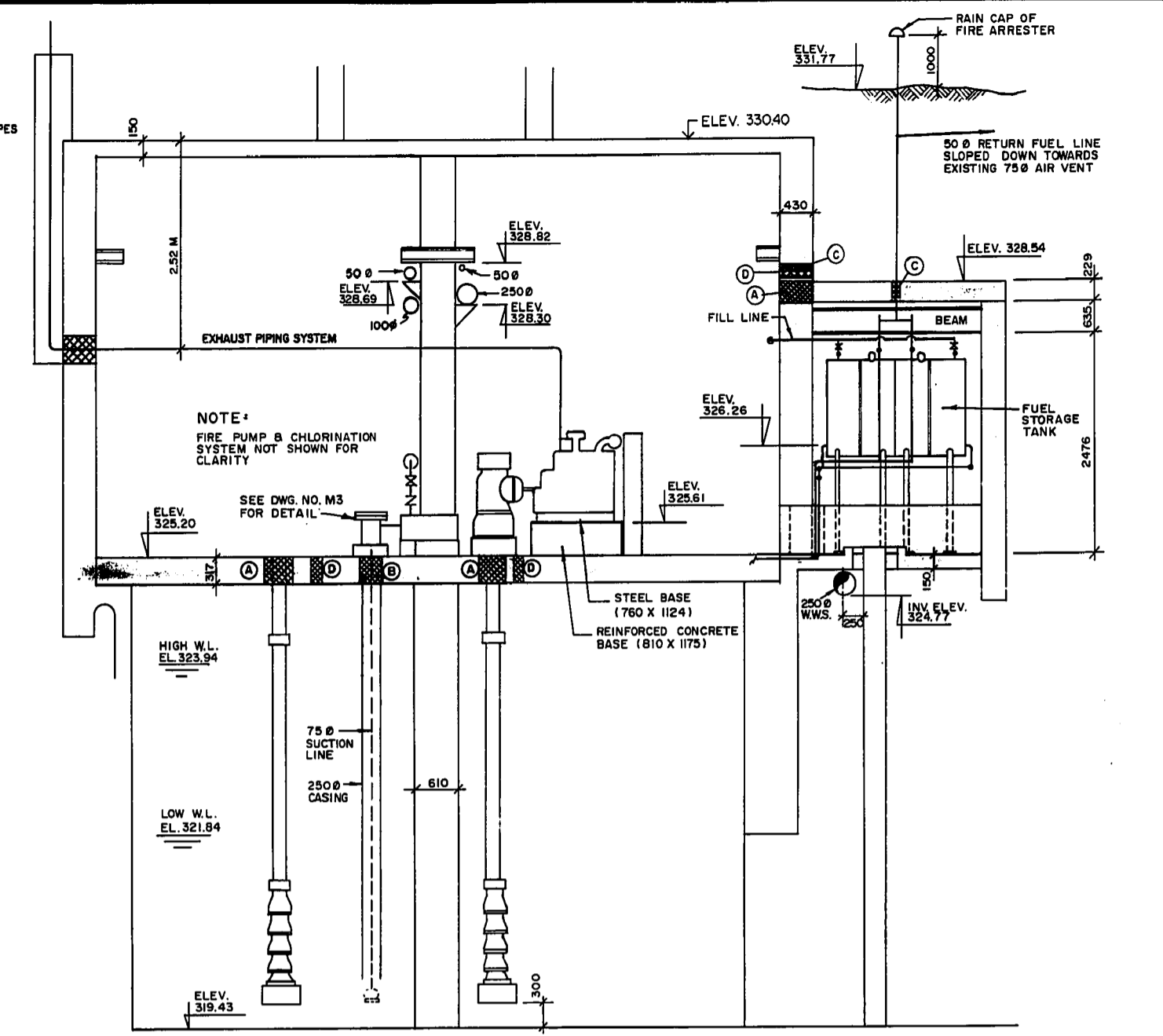
DETAIL SECTION THRU PUMP CHAMBER VENTS
SCALE 3/16" = 1'-0"



GREATER WINNIPEG WATER DISTRICT			
W.L. WARDROP & ASSOC. (MANAGEMENT) LTD.		CONSULTING ENGINEERS	
DESIGNED BY: J. L. G.	DRAWN BY: S. E. K.	LOW LIFT PUMP STATION INDIAN BAY	
CHECKED BY: <i>[Signature]</i>	DATE: MAY 8TH, 1959		
APPROVED		PUMP HOUSE MECHANICAL DETAILS	
FOR CONS. ENG. <i>[Signature]</i>		SCALE AS SHOWN	PROJECT NO. 5915
FOR DISTRICT: <i>[Signature]</i> GENERAL MANAGER & CHIEF ENGINEER			DRAWING NO. D-744

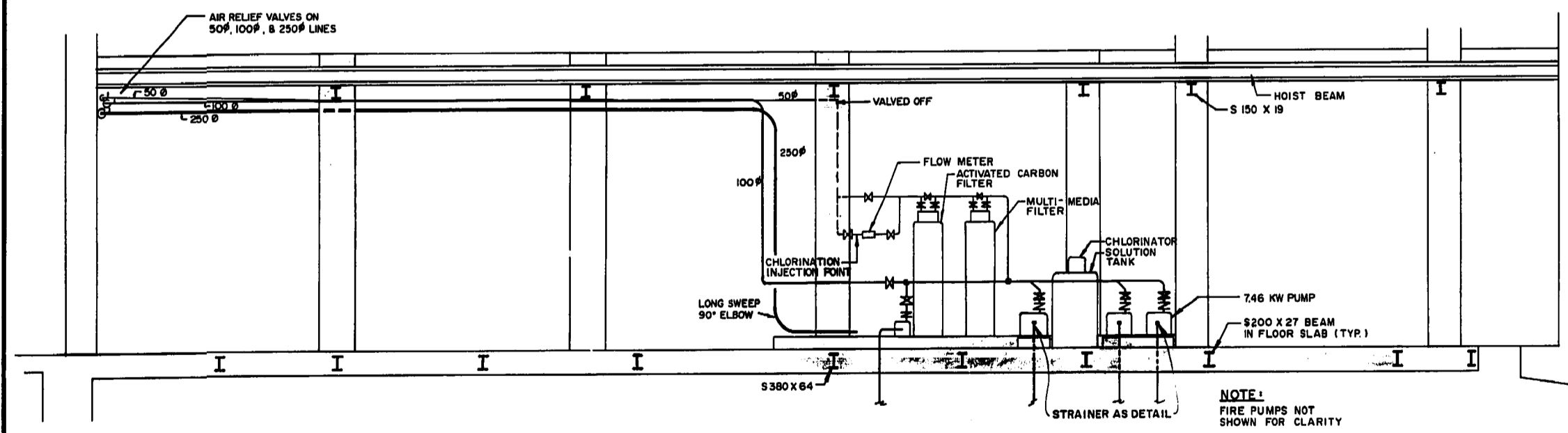


PLAN VIEW
SCALE 1:50



NOTE: WALL AND FLOOR OPENING
 (A) 356 Ø
 (B) 280 Ø
 (C) 102 Ø
 (D) 152 Ø

SECTION C-C
SCALE 1:50



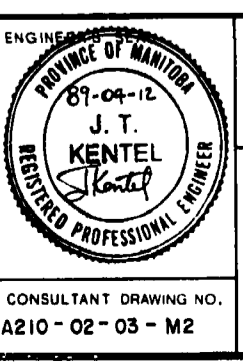
SECTION B-B
SCALE 1:50

NOTE
ALL AS BUILT INFORMATION SUPPLIED BY CITY OF WINNIPEG PERSONNEL

METRIC
WHOLE NUMBERS INDICATE MILLIMETRES
DECIMALIZED NUMBERS INDICATE METRES

NO	REVISIONS	DATE	BY
2	REVISED AS CONSTRUCTED	11/91	W.G.
1	REVISED AS CONSTRUCTED	05/91	M.P.M.

POETKER ENGINEERING CONSULTANTS WINNIPEG, MANITOBA	
DESIGNED BY J.T.K.	CHECKED BY A.J.P.
DRAWN BY L.H.	APPROVED BY J.T.K.
HOR SCALE AS NOTED	RELEASED FOR CONSTRUCTION
DATE APRIL, 1989	DATE



THE CITY OF WINNIPEG
WORKS AND OPERATIONS DIVISION
WATERWORKS WASTE & DISPOSAL DEPARTMENT

GATEHOUSE PIPING DETAILS

CITY DRAWING NUMBER
SHEET 01

CONSULTANT DRAWING NO.
A210-02-03-M2