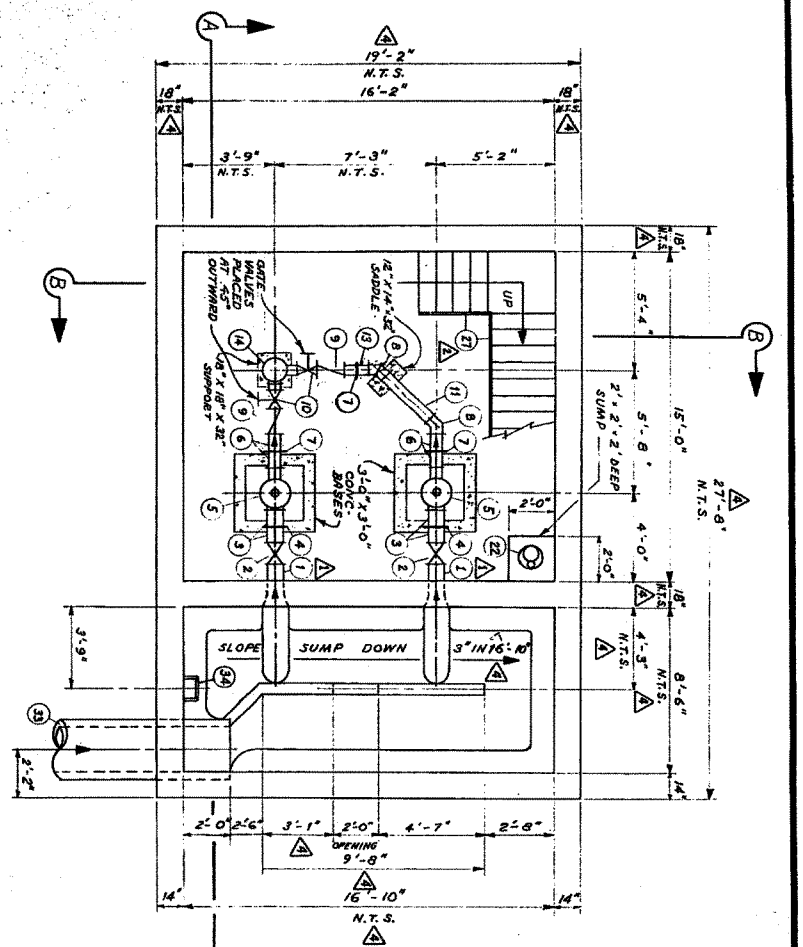


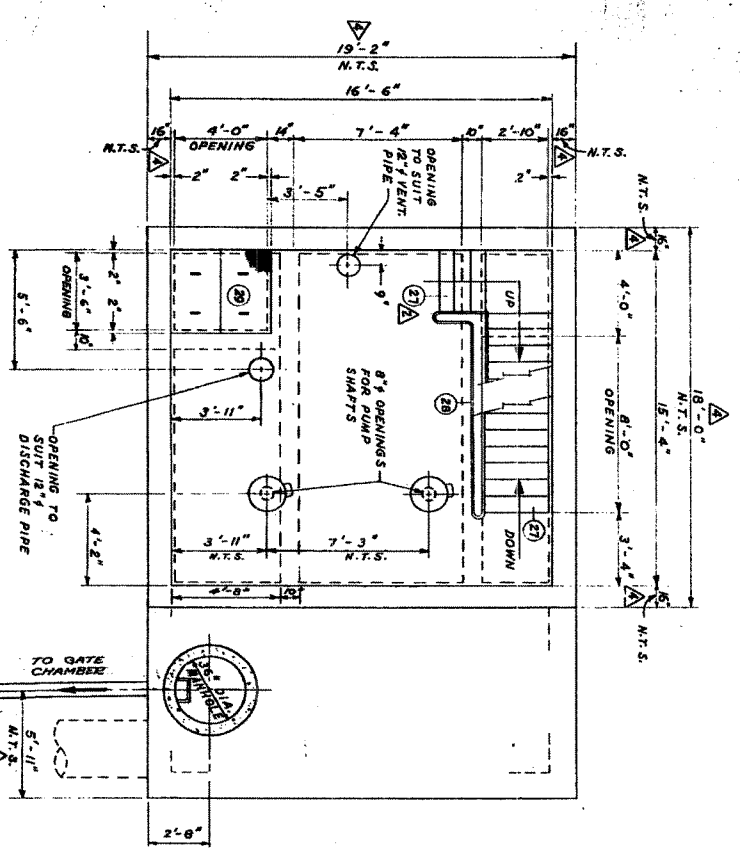
APPENDIX A – HISTORICAL DRAWING

- Drawing 680

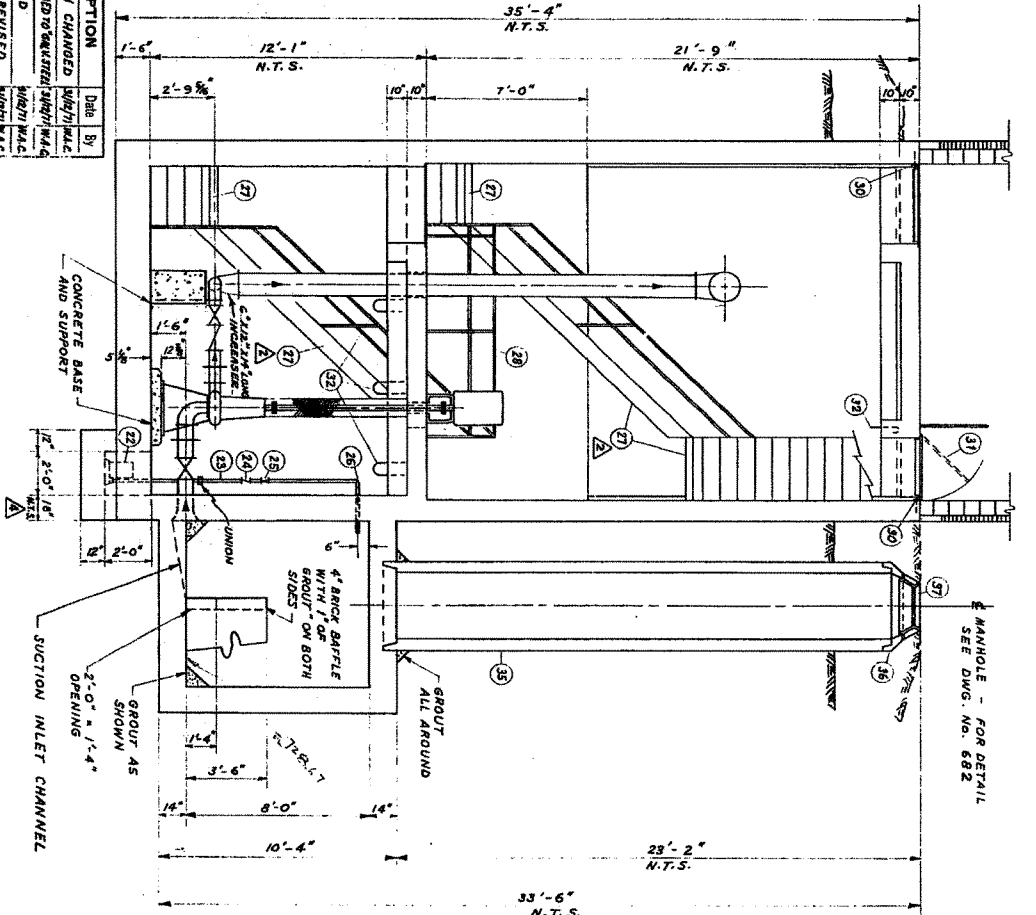
NOTE:
FOR SUPERSTRUCTURE DETAILS SEE DWG. NO. 679
FOR REINFORCING DETAILS SEE DWG. NO. 681
FOR VENTILATION, ELECTRICAL & MISC. PIPING DETAILS SEE DWG. NO. 682



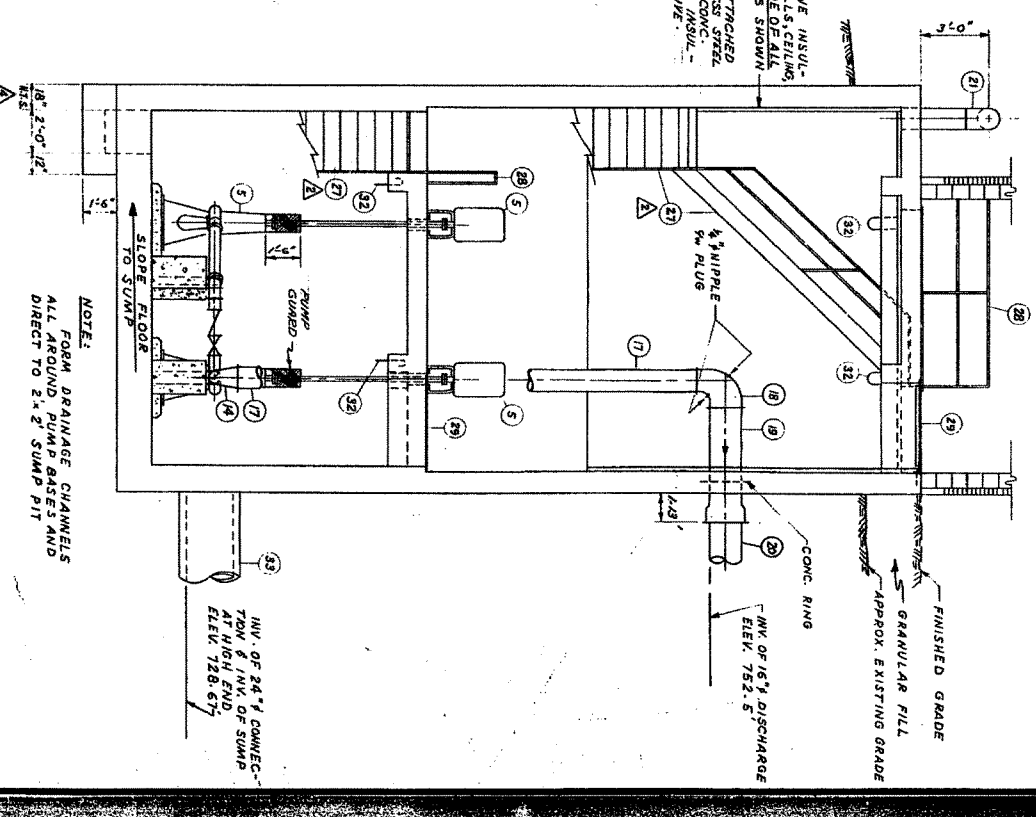
PUMP ROOM & SUMP - PLAN



MOTOR ROOM - PLAN



SEC. A-A



SEC. B-B

No.	DESCRIPTION	DATE BY
1	PIPE LENGTH CHANGED	11/11/61
2	ALUMINUM COVER TO WICKER/SHIRT HALL	11/11/61
3	NOTES ADDED	11/11/61
4	DIMENSIONS REVISED	11/11/61
5	LAYOUT OF OVERFLOW REV.	11/11/61

LIST OF MATERIALS

No.	DESCRIPTION	SIZE	QUANTITY	DETAIL	No.	DESCRIPTION	SIZE	QUANTITY	DETAIL
1	8" C.I. PIPE - FLARE TO FLANGE	1-1/2" L.	2		22	MONARCH MOD. NO. 44 SUMP PUMP		1	
2	8" FLANGED GATE VALVE	0-11/2"	2		23	1/2" STEEL PIPE (SCREWED)	15' (CONC.)	1	
3	8" C.I. PIPE - FLG. TO VICTAULIC	0-9"	4		24	1/2" BRZ. CHECK VALVE (SCR.)		1	
4	8" STYLE NO. 44 VICTAULIC		2		25	1/2" BRZ. GATE VALVE (SCR.)		1	
5	MONARCH C SERIES 642 PUMP		4		26	1/2" - 90° STEEL ELBOW (CONC.)		1	
6	8" C.I. PIPE - FLG. TO VICTAULIC	0-9"	2		27	64LV STEEL STAIR @ 45°	NON-SLIP TREADS 1/2" PIPE HANDRAIL	350' W/O.	
7	6" STYLE NO. 44 VICTAULIC	0-9"	3		28	1/2" PIPE HANDRAIL		4	
8	6" - 45° FLANGED C.I. ELBOW		2		29	1/2" CH'D. COVER, RECESSED	32" x 34"	4	
9	6" FLANGED CHECK VALVE	1'-2"	2		30	INTO FLOOR 3/4" LIFTING LUGS		4	
10	6" FLANGED GATE VALVE	0-10 1/2"	2		31	3" x 2" x 1/4" STEEL ANGLE	8'-0"	1	
11	6" FLANGED C.I. PIPE	2'-10 1/2"	1		32	3" HINGED 1/4" PLYWOOD COVER	8" x 30"	1	
12	6" C.I. PIPE - RB. TO VICTAULIC	0-7"	2		33	U-BOLT 1/2"		8	
13	6" x 4" C.I. - 90° C.I. FLANGED		1		34	STD. M.H. STEPS		5	
14	6" x 4" C.I. - 90° C.I. FLANGED		1		35	3/4" PRECAST CONC. M.H. RISER		1	
15	6" x 4" C.I. - 90° C.I. FLANGED		1		36	3/4" PRECAST CONC. M.H. RISER		1	
16	12" FLANGED STEEL PIPE	30'-11 1/2"	1		37	30" STD. M.H. FRAME / SOLID COVER		1	
17	12" FLANGED STEEL PIPE	30'-11 1/2"	1						
18	12" x 1/2" - 90° RB. STEEL INR. ELBOW	4'-9"	1						
19	16" C.I. PIPE - RB. TO BELL		1						
20	16" C.I. - 23" C.I. PIPE - BELL TYPE		1						
21	12" STEEL VENT PIPE		2						

SUPPLIED BY METRO CORPORATION

NOTE:
1. THE CONTRACTOR SHALL NOTE THAT MANY OF THE DIMENSIONS ARE "NOT TO SCALE" (N.T.S.).
2. THE SUPERSTRUCTURE SHALL EXTEND FOUR (4) INCHES BEYOND THE SUPERSTRUCTURE ON THE NORTH, WEST, AND SOUTH WALLS.

ROOF PLAN (SUBSTRUCTURE)



THE METROPOLITAN CORPORATION OF GREATER WINDSOR
WATERWORKS & WASTE DISPOSAL DIVISION
A. PENMAN - DIRECTOR

WILLOW LEFT STATION & CONNECTIONS SUBSTRUCTURE

DRAWING NO. 680
MICROFILMED NOV 75