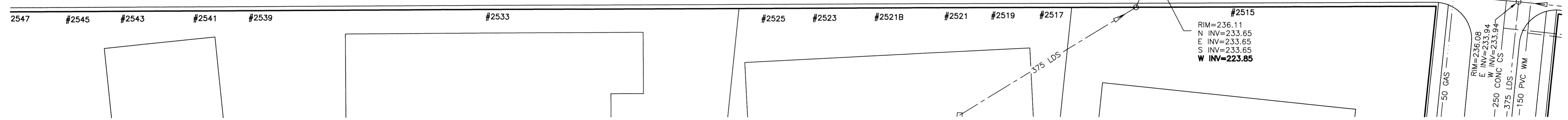
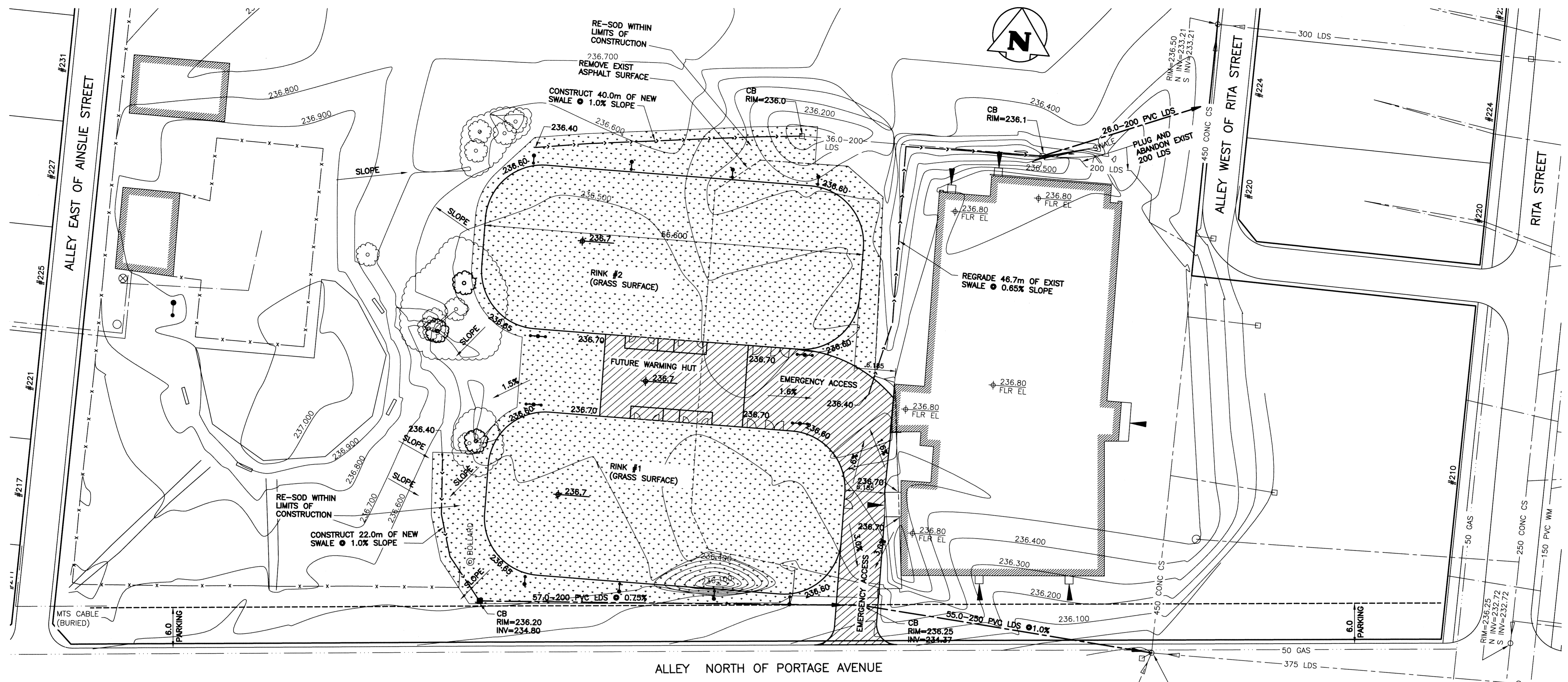


File Name: P:\Projects\2012\12-0107-016\DocControl\ToBeIssued\DWG\12-0107-016_C02-Rev 1.dwg - Tab: C02 Plotted By: Ddarache 13/04/08 [Mon 9:43am]
 Plot Date: 13/04/08



NOTES:

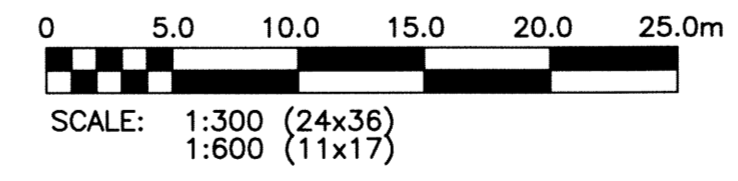
- GRADE SURFACE TO DIRECT RUNOFF AWAY FROM HOCKEY RINKS AND TOWARDS SWALES OR CATCH BASINS
- DO NOT PRUNE OR DAMAGE EXISTING TREES

WARNING

- NOTIFY THE GAS COMPANY OF THE PROPOSED LOCATION OF EXCAVATION.
- TAKE PRECAUTION TO AVOID DAMAGE TO GAS COMPANY INSTALLATIONS.
- SEE PROVINCIAL REGULATION 210/72 FOR DETAILS.

PROPERTY LIMITS DELINEATION

DELINEATION OF PROPERTY LIMITS AS SHOWN ON THIS DWG DOES NOT REPRESENT A "LEGAL SURVEY". KGS GROUP MAKES NO REPRESENTATION OR WARRANTY AS TO THE ACCURACY OF PROPERTY LIMITS DELINEATED ON THIS DWG, NOR ON THE DIMENSIONAL ACCURACY OF DWG FEATURES RELATIVE TO THOSE PROPERTY LIMITS.



METRIC

WHOLE NUMBERS INDICATE MILLIMETRES
DECIMALIZED NUMBERS INDICATE METRES

EXISTING	LEGEND-PLAN	PROPOSED	EXISTING	LEGEND-PLAN	PROPOSED	EXISTING	LEGEND-PROFILE	PROPOSED
300 LGS	LAND DRAINAGE SEWER	300 LGS	EMERGENCY ACCESS	EMERGENCY ACCESS	EMERGENCY ACCESS	EMERGENCY ACCESS	EMERGENCY ACCESS	EMERGENCY ACCESS
250 WWS	WASTE WATER SEWER	250 WWS	TEST HOLE	TEST HOLE	TEST HOLE	TEST HOLE	TEST HOLE	TEST HOLE
---	GAS	---	GUY WIRE	GUY WIRE	GUY WIRE	GUY WIRE	GUY WIRE	GUY WIRE
---	HYDRO	---	LIGHT STANDARD	LIGHT STANDARD	LIGHT STANDARD	LIGHT STANDARD	LIGHT STANDARD	LIGHT STANDARD
---	M.T.S.	---	BACK OF CURB	BACK OF CURB	BACK OF CURB	BACK OF CURB	BACK OF CURB	BACK OF CURB
150 WM	WATERMAIN	150 WM	CONCRETE	CONCRETE	CONCRETE	CONCRETE	CONCRETE	CONCRETE
+	HYDRANT	+	ASPHALT	ASPHALT	ASPHALT	ASPHALT	ASPHALT	ASPHALT
+	VALVE	+	SIDEWALK	SIDEWALK	SIDEWALK	SIDEWALK	SIDEWALK	SIDEWALK
○	MANHOLE	○	PROPERTY LINE	PROPERTY LINE	PROPERTY LINE	PROPERTY LINE	PROPERTY LINE	PROPERTY LINE
□	CATCH BASIN	□	SURVEY BAR	SURVEY BAR	SURVEY BAR	SURVEY BAR	SURVEY BAR	SURVEY BAR
▽	CURB INLET	▽	GEODETIC BENCHMARK	GEODETIC BENCHMARK	GEODETIC BENCHMARK	GEODETIC BENCHMARK	GEODETIC BENCHMARK	GEODETIC BENCHMARK
•	POLES (M-HYDRO)	•	ELEVATION	ELEVATION	ELEVATION	ELEVATION	ELEVATION	ELEVATION
---	---	---	---	---	---	---	---	---

LOCATION APPROVED UNDERGROUND STRUCTURES

SUPV. U/G STRUCTURES COMMITTEE DATE

NOTE:
LOCATION OF UNDERGROUND STRUCTURES AS SHOWN ARE BASED ON THE BEST INFORMATION AVAILABLE BUT NO GUARANTEE IS GIVEN THAT ALL EXISTING UTILITIES ARE SHOWN OR THAT THE GIVEN LOCATIONS ARE EXACT. CONFIRMATION OF EXISTENCE AND EXACT LOCATION OF ALL SERVICES MUST BE OBTAINED FROM THE INDIVIDUAL UTILITIES BEFORE PROCEEDING WITH CONSTRUCTION.

B.M.	XX-XXX	DESCRIPTION
ELEV.	2XX.XXX	

KGS GROUP CONSULTING ENGINEERS

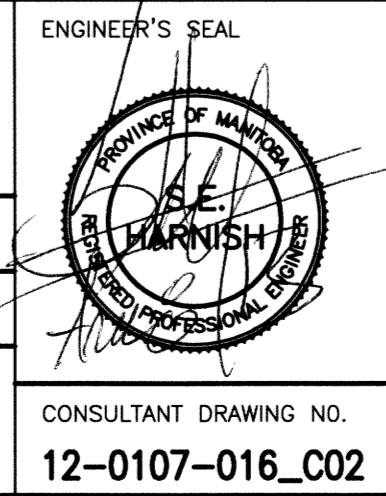
DESIGNED BY: EMS
CHECKED: [Signature]

DRAWN BY: DMW
APPROVED: RJH

HOR. SCALE: 1:300
VERTICAL: [Blank]

RELEASSED FOR CONSTRUCTION: [Blank]

DATE: 12/12/07



THE CITY OF WINNIPEG PLANNING, PROPERTY & DEVELOPMENT

PROJECT TITLE: **STURGEON HEIGHTS COMMUNITY CENTRE SITE DEVELOPMENT PROJECT BID OPPORTUNITY 169-2013 DRAINAGE PLAN**

SHEET OF: **02 OF 09**

COMPUTER FILE NAME: **12-0107-016_CALL**

CITY DRAWING NUMBER: **C02**

CONSULTANT DRAWING NO.: **12-0107-016_C02**