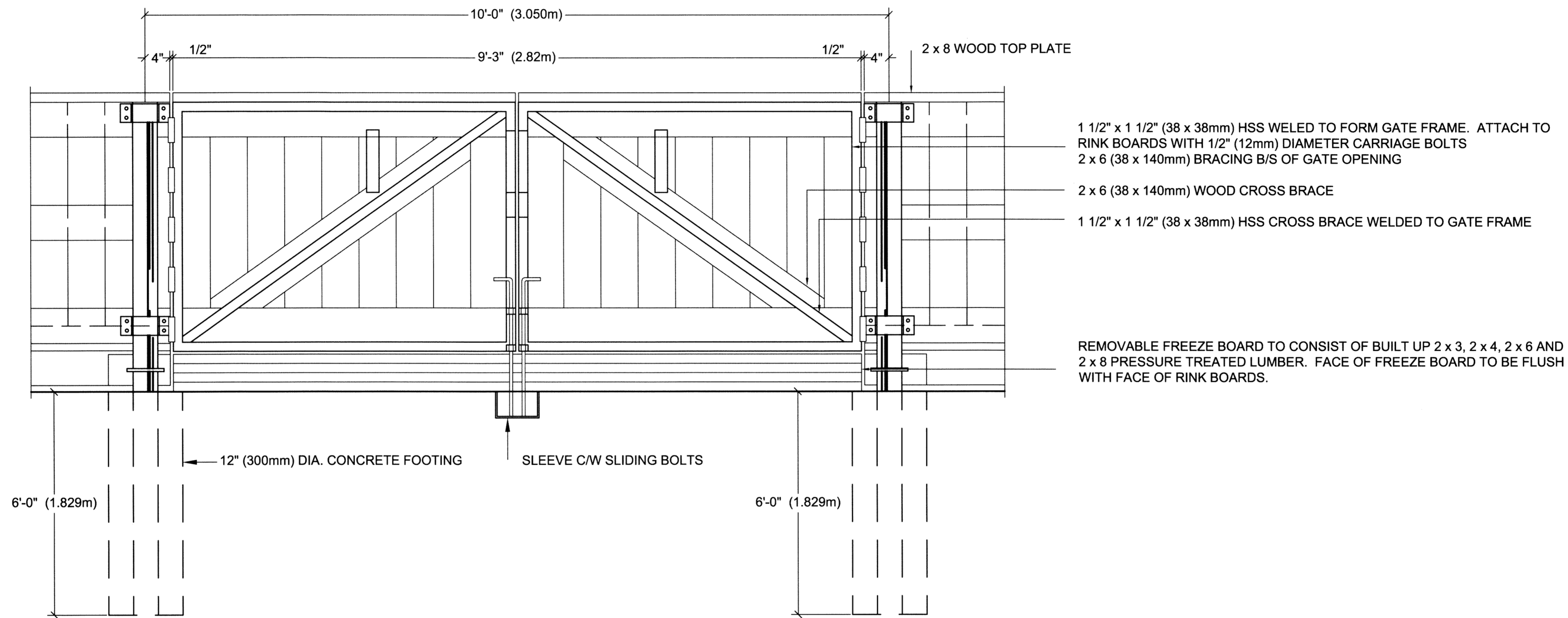
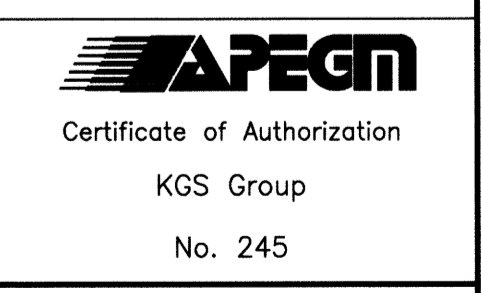


NOTE:
 CONSTRUCT TWO (2) 10' SERVICE GATES FOR RINK # 1
 CONSTRUCT ONE (1) 10' SERVICE GATE FOR RINK # 2



VEHICLE GATE - SWINGING GATE (3 IN TOTAL)
 SCALE: N.T.S.

File Name: P:\Projects\2012\12-0107-016\DocControl\ToBeIssued\DWG\12-0107-016-CS-4-Rev 0.dwg - Tab: CS-4 Plotted By: Dberoch 13/03/28 [Thu 8:35am]
 A1/PLOT SCALE: 1=1



LOCATION APPROVED UNDERGROUND STRUCTURES SUPV. U/G STRUCTURES COMMITTEE DATE NOTE: LOCATION OF UNDERGROUND STRUCTURES AS SHOWN ARE BASED ON THE BEST INFORMATION AVAILABLE BUT NO GUARANTEE IS GIVEN THAT ALL EXISTING UTILITIES ARE SHOWN OR THAT THE GIVEN LOCATIONS ARE EXACT. CONFIRMATION OF EXISTENCE AND EXACT LOCATION OF ALL SERVICES MUST BE OBTAINED FROM THE INDIVIDUAL UTILITIES BEFORE PROCEEDING WITH CONSTRUCTION.		B.M. ELEV. XX-XXX 2XX.XXX DESCRIPTION		ENGINEER'S SEAL 	
DESIGNED BY LMC DRAWN BY LMC HOR. SCALE: N.T.S. VERTICAL: .		CHECKED [Signature] APPROVED RELEASED FOR CONSTRUCTION:	CONSULTANT DRAWING NO. 12-0107-016_CS-4	PROJECT TITLE STURGEON HEIGHTS COMMUNITY CENTRE SITE DEVELOPMENT PROJECT BID OPPORTUNITY 169-2013 VEHICLE GATE ELEVATIONS & DETAILS	SHEET OF 08 09 COMPUTER FILE NAME 12-0107-016_CSALL CITY DRAWING NUMBER CS-4
NO. REVISIONS 0 ISSUED FOR TENDER 13/03/27		DATE BY DATE 13/03/27			