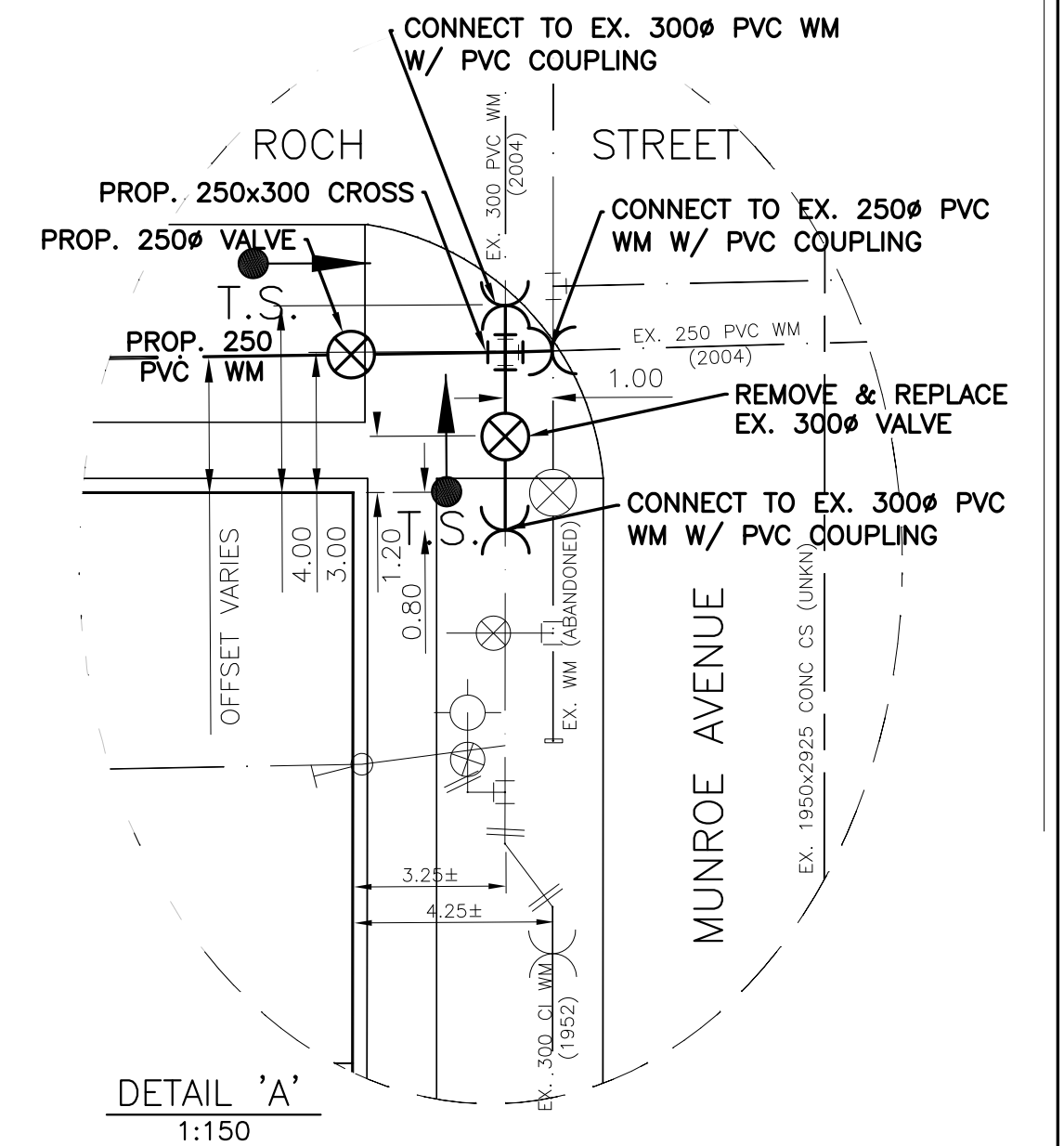
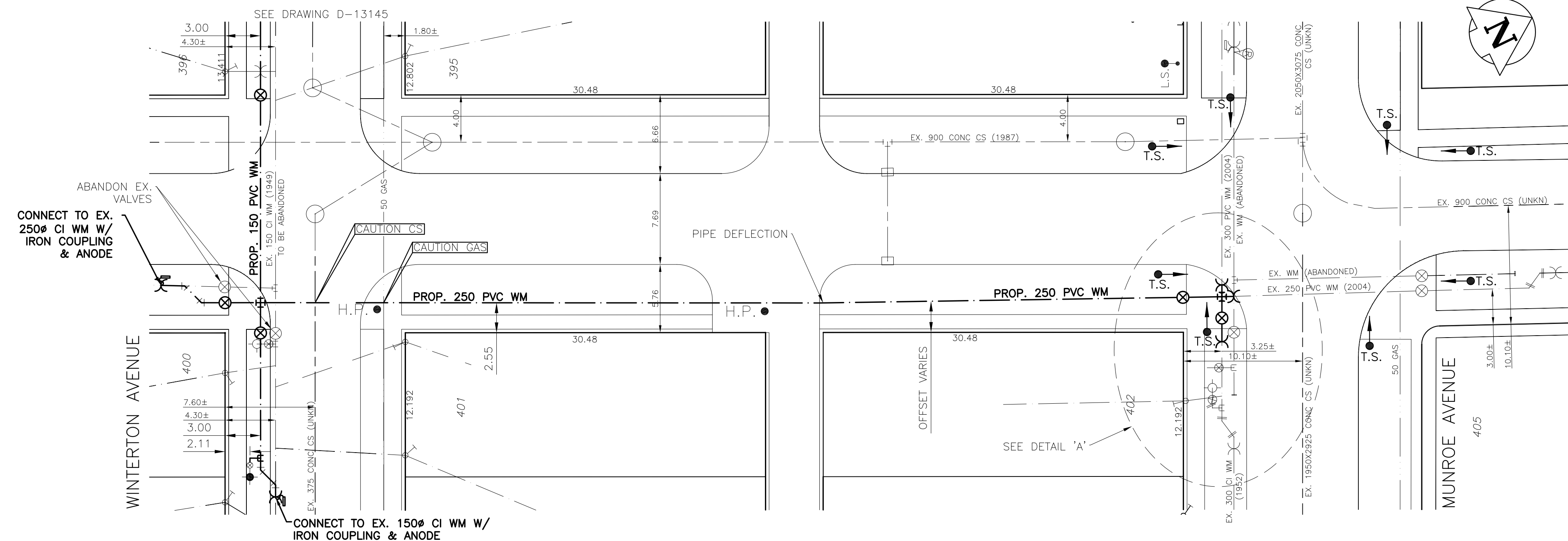


CHAINAGE ALONG EAST OF ROCH STREET
ROCH STREET



- NOTES:**
1. ALL GATE VALVES ARE CLOCKWISE TO OPEN WITH A RED OPERATING NUT UNLESS NOTED OTHERWISE.
 2. WATERMAIN TO BE INSTALLED BY TRENCHLESS METHODS.
 3. BACKFILL IS CLASS 5 WITHIN BOULEVARD AND CLASS 3 WHEN WITHIN 1.0m OF PAVEMENT OR SIDEWALK.
 4. WATER SERVICES ARE 19mm UNLESS OTHERWISE NOTED.
 5. MINIMUM COVER TO TOP OF WATERMAIN SHALL BE 2.4m.
 6. LOCATION OF ALL SERVICES TO BE CONFIRMED IN FIELD.
 7. EXPOSE EXISTING WATERMAIN TO CONFIRM DEPTH PRIOR TO CONSTRUCTION.
 8. ALL LEAD AND CAST IRON SERVICES TO BE RENEWED TO PROPERTY LINE.
 9. SERVICES TO BE RENEWED SHALL BE REPLACED FROM WATERMAIN TO PROPERTY LINE. ALL OTHERS TO BE RECONNECTED.



"Description of property limits, and existing and/or proposed features relative to these limits as shown on this drawing do not represent a Legal Survey. GENIVAR makes no representation or guarantee that the property limit information is accurate. GENIVAR accepts no responsibility for damages, if any, suffered by any third party as a result of decisions made or actions based on this drawing."

METRIC
WHOLE NUMBERS INDICATE MILLIMETRES
DECIMALIZED NUMBERS INDICATE METRES

	WATERMAIN			ANODE
	HYDRANT VALVE			REDUCER
	CURB STOP			LAMP STANDARD
	WASTE WATER SEWER			M.T.S.
	LAND DRAINAGE SEWER			TRAFFIC SIGNAL
	MANHOLE			CONCRETE/ASPHALT SIDEWALK
	CATCH BASIN			
	TEE			
	BEND			
	EXISTING			

LOCATION APPROVED UNDERGROUND STRUCTURES

SUPV. U/G STRUCTURES DATE COMMITTEE

NOTE:
LOCATION OF UNDERGROUND STRUCTURES AS SHOWN ARE BASED ON THE BEST INFORMATION AVAILABLE BUT NO GUARANTEE IS GIVEN THAT ALL EXISTING UTILITIES ARE SHOWN OR THAT THE GIVEN LOCATIONS ARE EXACT. CONFIRMATION OF EXISTENCE AND EXACT LOCATION OF ALL SERVICES MUST BE OBTAINED FROM THE INDIVIDUAL UTILITIES BEFORE PROCEEDING WITH CONSTRUCTION.

B.M. ELEV.

3	BID OPPORTUNITY 175-2013	APR/13	P.R.
2	DESIGN REVIEW W&W	MAR/13	P.R.
1	PRELIMINARY REVIEW W&W	JAN/13	P.R.

NO. REVISIONS DATE BY

GENIVAR
10 PRAIRIE WAY WINNIPEG, MANITOBA R2J 3J8
PH: (204)-477-6650 FAX: (204)-474-2864

DESIGNED BY P.R. CHECKED BY S.M.
DRAWN BY P.R. APPROVED BY I.McK.
HOR. SCALE: 1:250
VERT. SCALE: 1:50
DATE: APRIL 2013
RELEASED FOR ORIGINAL SIGNATURE BY K. ZUREK P. ENG
DATE: APRIL 3RD, 2013

ENGINEER'S SEAL
I. G. MCKINNON
REGISTERED PROFESSIONAL ENGINEER
CONSULTANT DRAWING NO. 131-12754-00-15

THE CITY OF WINNIPEG
WATER AND WASTE DEPARTMENT

2013 CAPITAL WORKS
WATERMAIN RENEWALS
WINTERTON AVENUE/ROCH STREET
5M SSL OF WINTERTON AVENUE TO
5M NSL OF MUNROE AVENUE

SHEET 3 OF 3
CITY DRAWING NO. D-13146