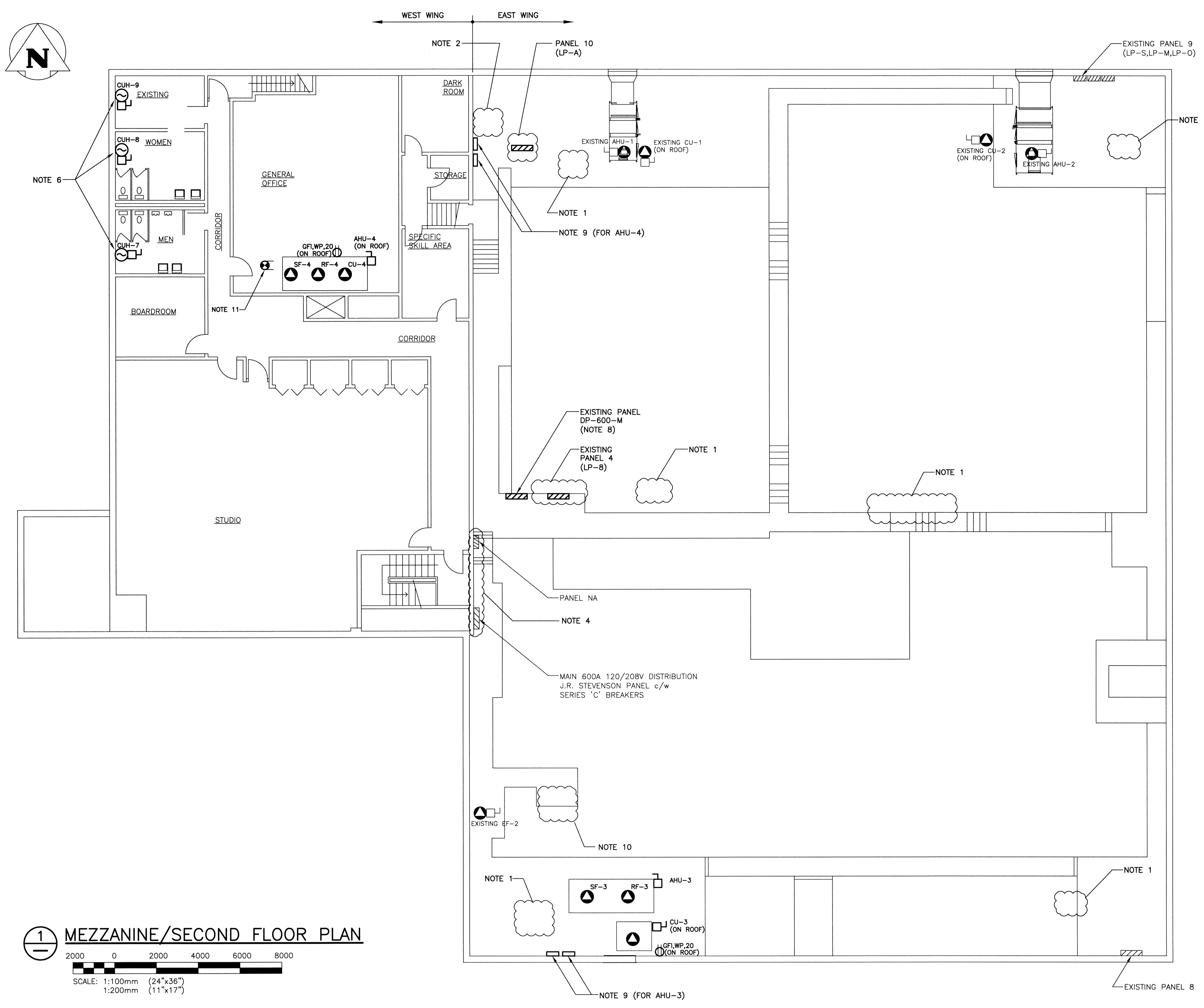


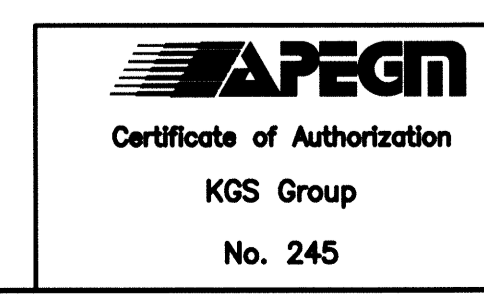
File Name: P:\Projects\2011\11-0107-02\DocControl\ToBeIssued\DWG\11-0107-02_P2-E02_Rev 1.dwg - Tab: P2-E02 Plotted By: DDioreche 13/03/12 [Tue 4:29pm]



1 MEZZANINE/SECOND FLOOR PLAN
 SCALE: 1:100mm (24"x36")
 1:200mm (11"x17")

- NOTES:**
- REMOVE AND DISPOSE OF ALL ELECTRICAL EQUIPMENT ABANDONED BY DEMOLITION OF MECHANICAL EQUIPMENT (SEE MECHANICAL DEMOLITION DRAWINGS). THIS INCLUDES ALL CONDUIT, WIRING, SWITCHES, CONTACTORS, ETC. NO LONGER IN USE. CONTRACTOR SHALL TURN OVER JOHNSON CONTROLS CABINET AT COMPRESSOR TO THE CITY.
 - DELETE EXISTING ELECTRICAL FOR EXISTING PUMPS P-1 AND P-2, NO LONGER IN SERVICE. RELOCATE POWER TO GP-1 AS REQUIRED.
 - NOTE REMOVED AT PHASE 2.
 - REPLACE EXISTING PANEL DP2/EP3 WITH A NEW 225A 66 CCT. PANEL. REFEED ALL EXISTING CIRCUITS FROM NEW BREAKERS.
 - REFER TO MECHANICAL DRAWINGS FOR EXACT LOCATION OF ALL NEW AND EXISTING MECHANICAL EQUIPMENT.
 - ALL POWER CONNECTIONS TO BE EXTENDED TO THE NEAREST POWER PANEL AS REQUIRED. CONTRACTOR TO CONFIRM LOADING ON THE EXISTING PANEL PRIOR TO CONNECTION. ALL PANEL SCHEDULES SHALL BE UPDATED ACCORDINGLY.
 - PROVIDE ALL REQUIRED FIRESEALING FOR ALL NEW ELECTRICAL WALL PENETRATIONS AND ANY OPENING FROM REMOVED ELECTRICAL EQUIPMENT TO MAINTAIN EXISTING FIRE SEPARATION RATINGS.
 - EXISTING 200A, 600V, 42 CIRCUIT CENTRAL DISTRIBUTION PANEL. FED FROM MAIN 600V DISTRIBUTION. THIS PANEL TO PROVIDE POWER TO ALL 600V LOADS.
 - NEW VFD'S, DISCONNECT SWITCHES, LOAD REACTOR AND LINE FILTERS TO BE MOUNTED WITHIN THE BUILDING ON THE MEZZANINE LEVEL. CONTRACTOR TO COORDINATE EXACT MOUNTING LOCATION ON SITE WITH ENGINEER PRIOR TO INSTALLATION. CONTRACTOR TO EXTEND ALL POWER WIRING BETWEEN THE VFD, DISCONNECT SWITCHES, LOAD REACTOR, LINE FILTERS AND THE ROOFTOP AHU. CONTRACTOR TO REFER TO AHU SHOP DRAWING FOR CONNECTION DETAILS.
 - REPLACE EXISTING PANEL LPC WITH A NEW 200A 42 CCT PANEL. REFEED ALL EXISTING CIRCUITS FROM NEW BREAKERS.
 - INTERLOCK DUCT SMOKE DETECTOR TO AHU-4.

- LEGEND:**
- 3ø MOTOR LOAD
 - 1ø LOAD
 - LOAD RATED DISCONNECT BY ELECTRICAL (WEATHERPROOF WHERE OUTDOORS ON ROOF)
 - DUCT SMOKE DETECTOR
 - DUPLEX RECEPTACLE
- DENOTES:**
 GFI - GROUND FAULT INTERRUPTER
 WP - WEATHER-PROOF
 20 - 20A 1-SLOT RECEPTACLE



B.M. ELEV.	
DESIGNED BY	AP
CHECKED BY	JLL
DRAWN BY	GCN
APPROVED BY	
HOR. SCALE:	AS SHOWN
VERTICAL:	
RELEASED FOR CONSTRUCTION:	
DATE	FEB 2011
DATE	

KGS GROUP CONSULTING ENGINEERS & PROJECT MANAGERS
 WINNIPEG (204) 896-1209
 THUNDER BAY (807) 345-2233

DESIGNED BY: AP
 CHECKED BY: JLL
 DRAWN BY: GCN
 APPROVED BY: [Signature]
 HOR. SCALE: AS SHOWN
 VERTICAL: [Blank]
 RELEASED FOR CONSTRUCTION: [Blank]
 DATE: FEB 2011

ENGINEER'S SEAL

 CONSULTANT DRAWING NO. P2-E02

THE CITY OF WINNIPEG
 PLANNING, PROPERTY AND DEVELOPMENT DEPARTMENT

PROJECT TITLE: FORT ROUGE LEISURE CENTRE HVAC UPGRADE - PHASE 2
 BID OPPORTUNITY NO. 190-2013

SHEET 001 OF 001
 COMPUTER FILE NAME: 11-0107-02-P2-E02
 CITY DRAWING NUMBER: [Blank]

SECOND/MEZZANINE FLOOR PLAN
 POWER ARRANGEMENT