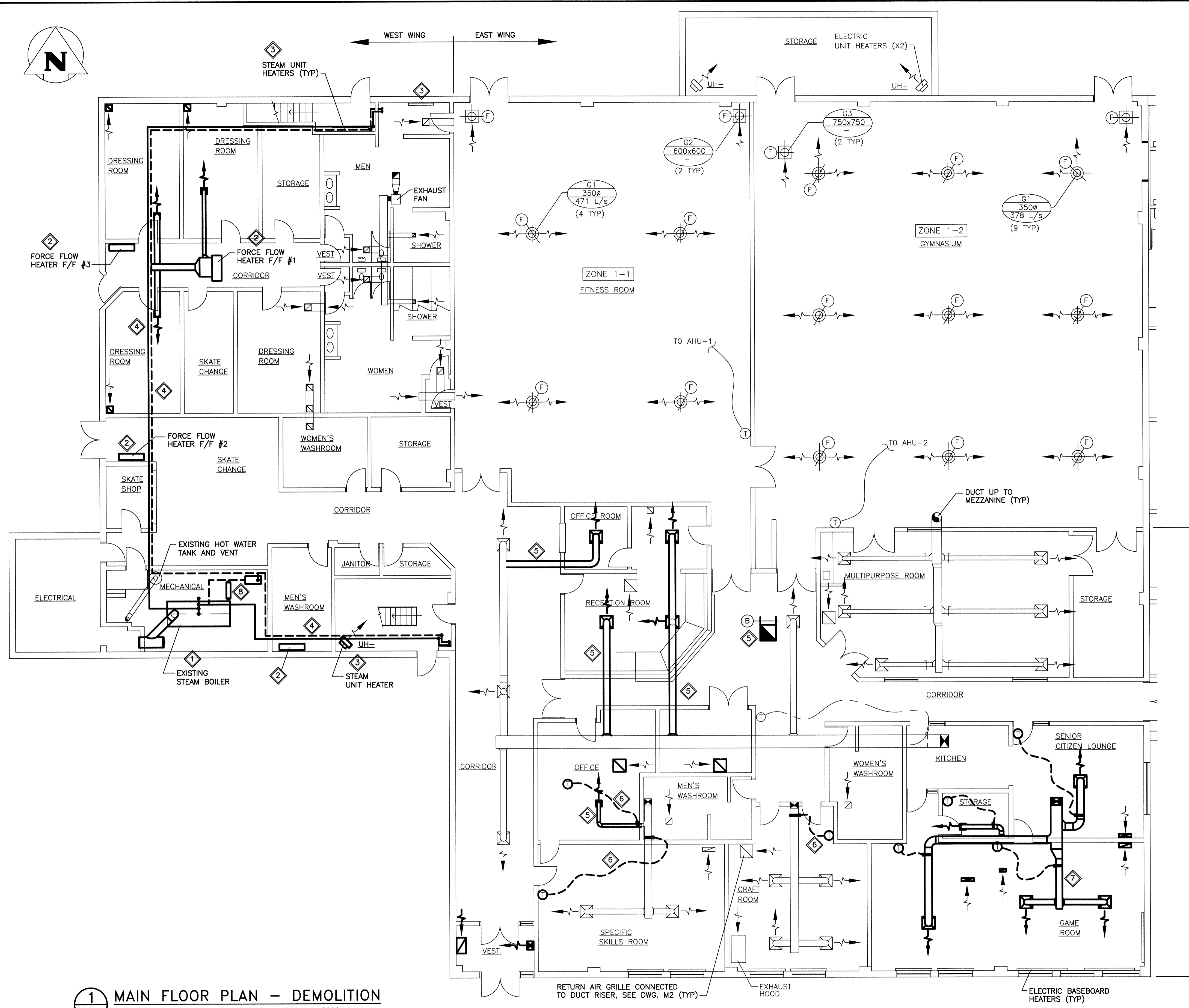


KGS FILE NO.: P:\PROJECTS\2011\11-0107-02 DWG\MECH\11-0107-02-P2-M01.dwg



1 MAIN FLOOR PLAN - DEMOLITION
 SCALE: 1:100mm

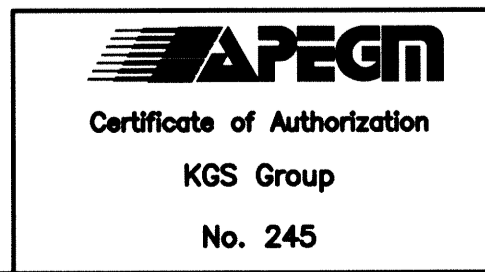
- GENERAL NOTES:**
- PERFORM WORK IN ACCORDANCE WITH ALL APPLICABLE CODES AND REGULATIONS.
 - EQUIPMENT LOCATIONS AND DUCT/PIPE ROUTING INDICATED ON DRAWINGS ARE APPROXIMATE ONLY, CONFIRM IN FIELD.
 - FILL IN ALL WALL/CEILING OPENINGS AFTER REMOVAL OF PIPING, DUCTWORK OR EQUIPMENT AND FINISH TO MATCH EXISTING. RESTORE EXISTING FIRE SEPARATIONS TO ORIGINAL RATING AFTER REMOVING FIRE DAMPERS.
 - ALL REMOVED EQUIPMENT, PIPING, DUCTWORK, ETC. SHALL BE DISPOSED OF OFF SITE.
 - EXISTING PIPE INSULATION CONTAINS ASBESTOS. (ASBESTOS ABATEMENT BY OTHERS). CONTRACTOR SHALL EXPOSE ALL CONCEALED PIPING AND SCHEDULE ABATEMENT THROUGH CONTRACT ADMINISTRATOR. PIPING SHALL BE REMOVED ONLY AFTER ASBESTOS ABATEMENT IS COMPLETED.
 - SEAL ALL WALL/ROOF PENETRATIONS AND DUCTWORK WATER/AIR TIGHT.

- SCOPE OF DEMOLITION:**
- REMOVE EXISTING STEAM HEATING SYSTEM INCLUDING BOILER, PIPING, PIPE HANGERS, TERMINAL EQUIPMENT, ETC. FIELD LOCATE PIPE ROUTING AND EQUIPMENT.

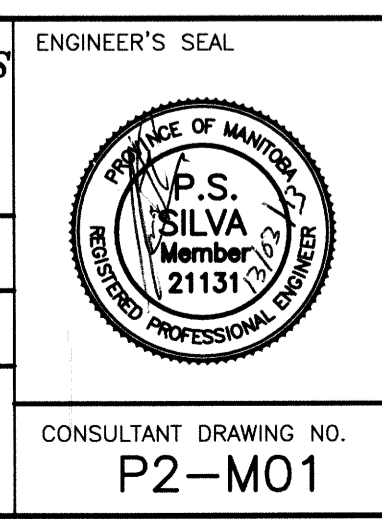
- KEY NOTES:**
- DISMANTLE AND REMOVE EXISTING NATURAL GAS FIRED STEAM BOILER AND ALL ASSOCIATED STEAM AND CONDENSATE PIPING INCLUDING RECEIVERS, PUMPS, ETC.
 - REMOVE EXISTING FORCE FLOW HEATER AND ASSOCIATED DUCTWORK AND CONTROLS (TYP).
 - REMOVE EXISTING STEAM HEATING UNITS AND ASSOCIATED PIPING, CONTROLS, ETC. (TYP).
 - REMOVE EXISTING STEAM AND CONDENSATE PIPING. CONFIRM EXACT PIPE ROUTING IN FIELD. (NOTE: ALL STEAM AND CONDENSATE PIPING ARE NOT SHOWN. CONTRACTOR TO FIELD LOCATE PIPE BRANCHES CONNECTING TO HEATING COILS, FORCE FLOW HEATERS, ETC.)
 - REMOVE PORTIONS OF EXISTING DUCTWORK AS SHOWN (TYP).
 - REMOVE EXISTING MODULATING DAMPERS AND ASSOCIATED THERMOSTATS AND CONTROL WIRING (TYP).
 - REMOVE EXISTING DUCTWORK AS SHOWN.
 - DISCONNECT AND REMOVE EXISTING STEAM TO DOMESTIC WATER HEAT EXCHANGER AND ALL ASSOCIATED PIPING. REMOVE DOMESTIC WATER PIPING BRANCHES CONNECTING TO THE HEAT EXCHANGER AND CAP OFF AT MAIN BRANCH. (NOTE: THIS SYSTEM IS NO LONGER USED TO HEAT WATER)

- LEGEND:**
- EQUIPMENT, PIPING OR DUCTWORK TO BE REMOVED
 - EQUIPMENT, PIPING OR DUCTWORK TO REMAIN
 - THERMOSTAT
 - SUPPLY DUCTWORK
 - RETURN DUCTWORK
 - UNIT HEATER

DUCTWORK IN CEILING SPACE BELOW MEZZANINE



B.M. ELEV. :	KGS GROUP		CONSULTING ENGINEERS & PROJECT MANAGERS	
	DESIGNED BY: PSS	CHECKED BY: RED	WINNIPEG (204) 896-1209 THUNDER BAY (807) 345-2233	
	DRAWN BY: VJH	APPROVED BY: [Signature]	HOR. SCALE: AS SHOWN VERTICAL: .	
1 RE-ISSUED FOR TENDER 13/03/08	0 ISSUED FOR TENDER 12/03/27	NO. REVISIONS	DATE	DATE



THE CITY OF WINNIPEG
 PLANNING, PROPERTY AND DEVELOPMENT DEPARTMENT

PROJECT TITLE: FORT ROUGE LEISURE CENTRE HVAC UPGRADE - PHASE 2
 BID OPPORTUNITY NO. 190-2013

MAIN FLOOR PLAN
 EXISTING DUCTWORK - DEMOLITION

SHEET 001 OF 001
 COMPUTER FILE NAME: 11-0107-02-P2-M01
 CITY DRAWING NUMBER