

- GENERAL NOTES:**
- PERFORM WORK IN ACCORDANCE WITH ALL APPLICABLE CODES AND REGULATIONS.
 - EQUIPMENT LOCATIONS AND DUCT/PIPE ROUTING INDICATED ON DRAWINGS ARE APPROXIMATE ONLY, CONFIRM IN FIELD.
 - FILL IN ALL WALL/CEILING OPENINGS AFTER REMOVAL OF DUCTWORK OR EQUIPMENT AND FINISH TO MATCH EXISTING. RESTORE EXISTING FIRE SEPARATIONS TO ORIGINAL RATING AFTER REMOVING FIRE DAMPERS.
 - ALL REMOVED EQUIPMENT, PIPING, DUCTWORK, ETC. SHALL BE DISPOSED OF OFF SITE.
 - EXISTING PIPE INSULATION CONTAINS ASBESTOS. (ASBESTOS ABATEMENT BY OTHERS). CONTRACTOR SHALL EXPOSE ALL CONCEALED PIPING AND SCHEDULE ABATEMENT THROUGH CONTRACT ADMINISTRATOR. PIPING SHALL BE REMOVED ONLY AFTER ASBESTOS ABATEMENT IS COMPLETED.
 - CLEAN ALL EXISTING DUCTWORK THAT IS TO REMAIN.

- SCOPE OF DEMOLITION:**
- REMOVE EXISTING STEAM HEATING SYSTEM INCLUDING BOILER, PIPING, PIPE HANGERS, TERMINAL EQUIPMENT, ETC. FIELD LOCATE PIPE ROUTING AND EQUIPMENT.

- KEY NOTES:**
- REMOVE EXISTING CONDENSER, CAP OFF EXPOSED CONNECTIONS AND DELIVER TO CIMCO REFRIGERATION STORAGE YARD.
 - REMOVE EXISTING COMPRESSOR AND ASSOCIATED REFRIGERANT PIPING.
 - REMOVE EXISTING AIR HANDLING UNIT.
 - REMOVE EXISTING FAN COIL UNITS AND DUCTWORK (TYP). (DUCTWORK TO BE FIELD LOCATED)
 - REMOVE EXISTING STEAM HEATING UNITS AND ASSOCIATED PIPING AND CONTROLS (TYP).
 - REMOVE EXISTING ROOFTOP AIR HANDLING UNITS AND ALL ASSOCIATED DUCTWORK AND CONTROLS.
 - REMOVE EXISTING UNIT HEATER AND ALL ASSOCIATED PIPING AND CONTROLS.
 - EXISTING DUCT RISER SERVING THE MULTI-PURPOSE ROOM BELOW TO REMAIN.
 - REMOVE EXISTING STEAM TO GLYCOL HEAT EXCHANGER AND ASSOCIATED PUMPS, PIPING AND CONTROLS. REMOVE PIPING UP TO TIE-IN POINT TP-1. TURN OVER REMOVED EQUIPMENT TO OWNER. EXISTING GLYCOL FILL PACKAGE (GP-1) IS TO BE RETAINED AND RE-USED IN THE NEW SYSTEM.
 - REMOVE EXISTING STEAM AND CONDENSATE PIPING. NOT ALL BRANCH PIPING SHOWN. VERIFY IN FIELD (TYP).

- LEGEND:**
- EQUIPMENT, PIPING OR DUCTWORK TO BE REMOVED
 - EQUIPMENT, PIPING OR DUCTWORK TO REMAIN
 - THERMOSTAT
 - SUPPLY DUCTWORK
 - RETURN DUCTWORK
 - UNIT HEATER
 - TIE IN POINT

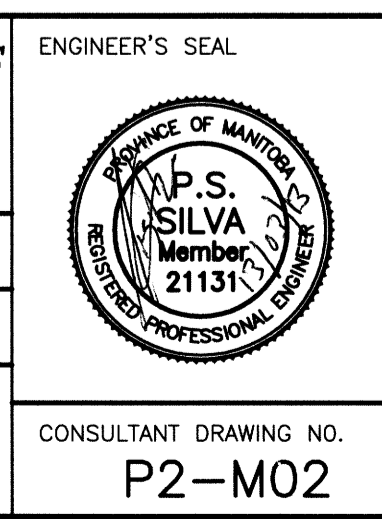
1 MEZZANINE/SECOND FLOOR PLAN - DEMOLITION
 2000 0 2000 4000 6000 8000
 SCALE: 1:100mm

KGS FILE NO.: P:\PROJECTS\2011\11-0107-02\DWG\MECH\11-0107-02_M2.dwg



NO.	REVISIONS	DATE	BY
1	RE-ISSUED FOR TENDER	13/03/08	
0	ISSUED FOR TENDER	12/03/07	PSS

KGS GROUP		CONSULTING ENGINEERS & PROJECT MANAGERS	
WINNIPEG (204) 896-1209		THUNDER BAY (807) 345-2233	
DESIGNED BY: PSS	CHECKED BY: RED	ENGINEER'S SEAL	
DRAWN BY: VJH	APPROVED BY: [Signature]	CONSULTANT DRAWING NO. P2-M02	
HOR. SCALE: AS SHOWN	RELEASED FOR CONSTRUCTION:		
VERTICAL:	DATE:		



THE CITY OF WINNIPEG
 PLANNING, PROPERTY AND DEVELOPMENT DEPARTMENT

PROJECT TITLE: FORT ROUGE LEISURE CENTRE HVAC UPGRADE - PHASE 2 BID OPPORTUNITY NO. 190-2013

SHEET 001 OF 001
 COMPUTER FILE NAME: 11-0107-02-P2-M02
 CITY DRAWING NUMBER: