

- LEGEND:**
- NEW EQUIPMENT OR DUCTWORK
 - EXISTING EQUIPMENT OR DUCTWORK
 - ACOUSTICALLY LINED DUCTWORK
 - EXTERNALLY INSULATED DUCTWORK
 - THERMOSTAT
 - BALANCE DAMPER
 - RE-HEAT COIL
 - VARIABLE AIR VOLUME BOX
 - LOUVER NO.
 - LOUVER SIZE (WxH)
 - AIR FLOW

1 MEZZANINE/SECOND FLOOR PLAN
 2000 0 2000 4000 6000 8000
 SCALE: 1:100mm

GENERAL NOTES:

1. PERFORM WORK IN ACCORDANCE WITH ALL APPLICABLE CODES AND REGULATIONS.
2. REVIEW EQUIPMENT LOCATIONS WITH CONTRACT ADMINISTRATOR PRIOR TO INSTALLATION.
3. DUCT ROUTING INDICATED ON DRAWINGS ARE APPROXIMATE ONLY, CONFIRM IN FIELD, REROUTE DUCTING TO ELIMINATE FIELD INTERFERENCES WITH BUILDING STRUCTURES, ELECTRICAL ETC. CONFIRM CHANGES WITH CONTRACT ADMINISTRATOR.
4. CONFORM TO SMACNA STANDARDS FOR SUPPLY AND INSTALLATION OF DUCTWORK.
5. PROVIDE ALL WALL/ROOF PENETRATIONS AND CURBS.
6. SEAL ALL WALL/ROOF PENETRATIONS AND DUCTWORK WATER/AIR TIGHT.
7. PROVIDE ACCESS DOORS FOR ALL EQUIPMENT AND DAMPERS LOCATED ABOVE DRYWALL CEILINGS.
8. REVISE SPRINKLER PIPING WHERE REQUIRED TO FACILITATE INSTALLATION OF NEW HVAC SYSTEM. SPRINKLER MODIFICATIONS TO BE DESIGNED BY A QUALIFIED SPRINKLER ENGINEER TO MEET NEPA 13.

KEY NOTES:

- 1 EXISTING AIR HANDLING UNITS.
- 2 EXISTING DUCTWORK IN MEZZANINE SPACE.
- 3 RUN DOWN AND CONNECT TO EXISTING SUPPLY DUCTWORK SERVING ZONE 1-3 (MULTI-PURPOSE ROOM).
- 4 RUN DOWN AND CONNECT TO EXISTING SUPPLY DUCT SERVING ZONE 1-9.
- 5 RUN DOWN AND CONNECT TO EXISTING SUPPLY DUCT SERVING ZONE 1-10.
- 6 INSTALL NEW VAV BOXES AND RE-HEAT COILS AS INDICATED (TYP).
- 7 NEW AIR HANDLING UNIT AHU-4 LOCATED ON ROOF. PROVIDE ROOF CURBING AND PENETRATIONS. PROVIDE ACOUSTICALLY LINED SUPPLY AND RETURN DUCTWORK AS INDICATED.
- 8 NEW AIR HANDLING UNIT AHU-3. CONNECT DUCTWORK AS SHOWN (TYP). PROVIDE ACOUSTICALLY LINED SUPPLY AND RETURN DUCTWORK AS INDICATED.

GRILLE SCHEDULE

TAG	PRICE DESIGNATION	COMMENTS
G1	150ø/600x600/SCD/31/3C/B12	4-WAY SUPPLY DIFFUSER
G2	200ø/600x600/SCD/31/3C/B12	4-WAY SUPPLY DIFFUSER
G3	250ø/600x600/SCD/31/3C/B12	4-WAY SUPPLY DIFFUSER
G4	300ø/600x600/SCD/31/3C/B12	4-WAY SUPPLY DIFFUSER
G5	150ø/300x300/SCD/31/3C/B12	4-WAY SUPPLY DIFFUSER
G6	200ø/300x300/SCD/31/3C/B12	4-WAY SUPPLY DIFFUSER
G7	250ø/300x300/SCD/31/3C/B12	4-WAY SUPPLY DIFFUSER
G8	350ø/RCDA/B12	ROUND CONE DIFFUSER
G9	350x250/520D/F/L/A/B12	LOUVERED SUPPLY
G10	1000x250/530/F/L/A/B12	LOUVERED RETURN
G11	600x300/530/F/L/A/B12	LOUVERED RETURN
G12	350x350/80/F/A/B12	LOUVERED RETURN
G13	600x600/80/F/A/B12	EGG CRATE RETURN
G14	200x200/520D/F/L/A/B12	LOUVERED SUPPLY
G15	750x750/80/F/A/B12	EGG CRATE RETURN

LOUVER SCHEDULE

TAG	SIZE	ACCEPTABLE PRODUCT
L1	1371 x 762	PRICE/DE439
L2	1778 x 914	PRICE/DE439
L3	1524 x 1219	PRICE/DE439
L4	400 x 500	PRICE/DE439

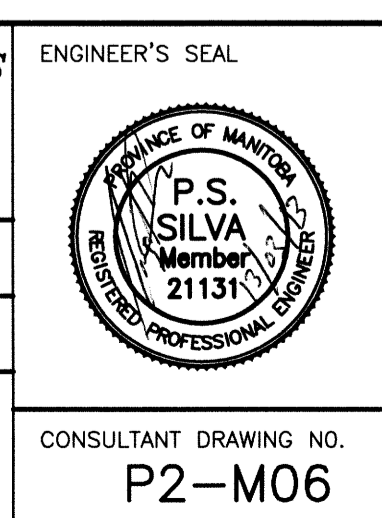
KGS FILE NO.: P:\PROJECTS\2011\11-0107-02\DWG\MECH\11-0107-02_M6.dwg



KGS GROUP CONSULTING ENGINEERS & PROJECT MANAGERS
 WINNIPEG (204) 896-1209
 THUNDER BAY (807) 345-2233

DESIGNED BY: PSS
 CHECKED BY: RED
 DRAWN BY: VJH
 APPROVED BY: [Signature]
 HOR. SCALE: AS SHOWN
 VERTICAL: .
 RELEASED FOR CONSTRUCTION: .
 DATE: .

1	RE-ISSUED FOR TENDER	13/03/08	[Signature]
0	ISSUED FOR TENDER	12/04/11	PSS
NO.	REVISIONS	DATE	BY



THE CITY OF WINNIPEG
 PLANNING, PROPERTY AND DEVELOPMENT DEPARTMENT

PROJECT TITLE: FORT ROUGE LEISURE CENTRE HVAC UPGRADE - PHASE 2 BID OPPORTUNITY NO. 190-2013

CONSULTANT DRAWING NO. P2-M06

SHEET OF 001 001
 COMPUTER FILE NAME: 11-0107-02-P2-M06
 CITY DRAWING NUMBER: .