

- MISC. WORK ITEMS:**  
(REFER TO BID DOCS.)
1. FLAP GATE CLEANING.
  2. CONC. SPALL REPAIRS.
  3. CONC. CRACK REPAIRS.
  4. FLOW CONTROL.

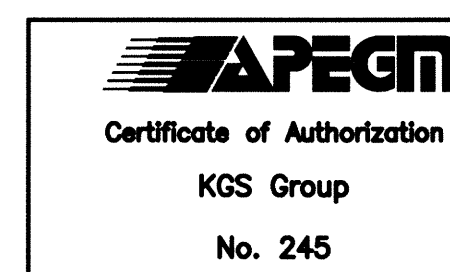
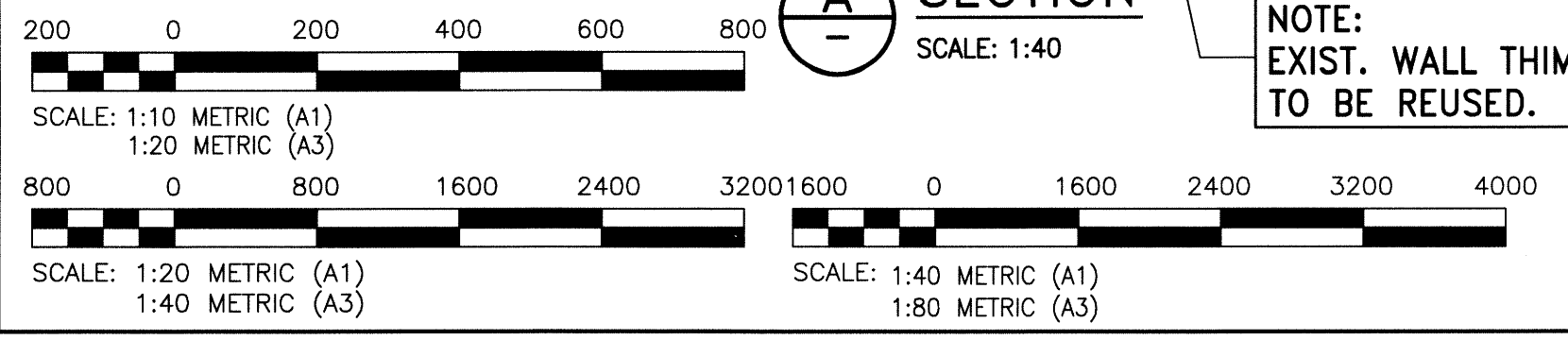
REMOVE AND REPLACE EXIST. CAST-IRON SLIDE GATE AND ALL ASSOCIATED EQUIPMENT INCLUDING OPERATOR SUPPORT FRAMING AND ANCHOR BOLTS

**NEW CAST IRON SLIDE GATE:**  
(DESIGN BY GATE SUPPLIER)  
SIZE: 1829x1829 (72'x72')  
SEATING HEAD: 8.88m (29.1 ft)

EXIST. CAST-IRON WALL THIMBLE (BEHIND)  
SANDBLAST EXIST. WALL THIMBLE TO SSPC-SP6 (COMMERCIAL BLAST)  
COAT EXIST. WALL THIMBLE WITH 2 COATS INTERGARD FP OR AMERLOCK  
2 EPOXY COATING  
125-150um DFT PER COAT

- NOTES:**
1. ALUMINUM SHALL BE IN ACCORDANCE WITH CAN/CSA S517 (LATEST)
  2. ALL ALUMINUM IN CONTACT WITH CONCRETE OR CAST INTO CONCRETE TO HAVE BITUMINOUS ISOLATION COATING.
  3. ALL NUTS, BOLTS AND WASHERS SHALL BE ALLOY TYPE 6061-T6.

File Name: P:\Projects\2012\12-0107-019-Doc.Control\Tobias\DWG\1-0163F-S0001-001-Rev 0.dwg - Tab: SB Plotted By: Dberoch 03/19/2013 [Mon 2:32pm]



|                           |                           |
|---------------------------|---------------------------|
| BM ELEV. N/A              | FIELD BOOK # N/A          |
| POSTED TO LBIS            |                           |
| DESIGNED BY KRD           | CHECKED BY CMS            |
| DRAWN BY FBV              | APPROVED BY               |
| HR SCALE                  | RELEASED FOR CONSTRUCTION |
| 0 ISSUED FOR CONSTRUCTION | 18/03/13 CMS              |
| NO. REVISIONS             | DATE BY                   |
|                           | 2013-02-01                |

**KGS GROUP**  
CONSULTING ENGINEERS

ENGINEER'S SEAL  
SIEPMAN  
Member  
20813

TENDER No. 213-2013  
FILENAME: 0163F-S0001-001-Rev 0.dwg  
PLOT DATE: 2013/03/18

**THE CITY OF WINNIPEG**  
WATER AND WASTE DEPARTMENT

MISSION FLOOD PUMPING STATION  
SLIDE GATE REBURFISHMENT  
**STRUCTURAL**  
PLAN, SECTIONS & DETAILS

SHEET 1 OF 1  
CITY DRAWING NUMBER  
1-0163F-S0001-001