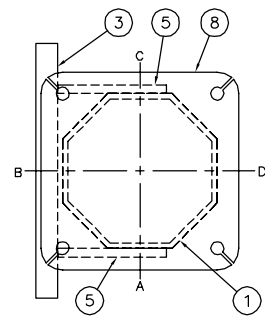
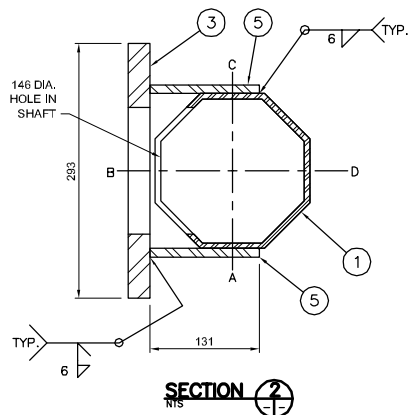


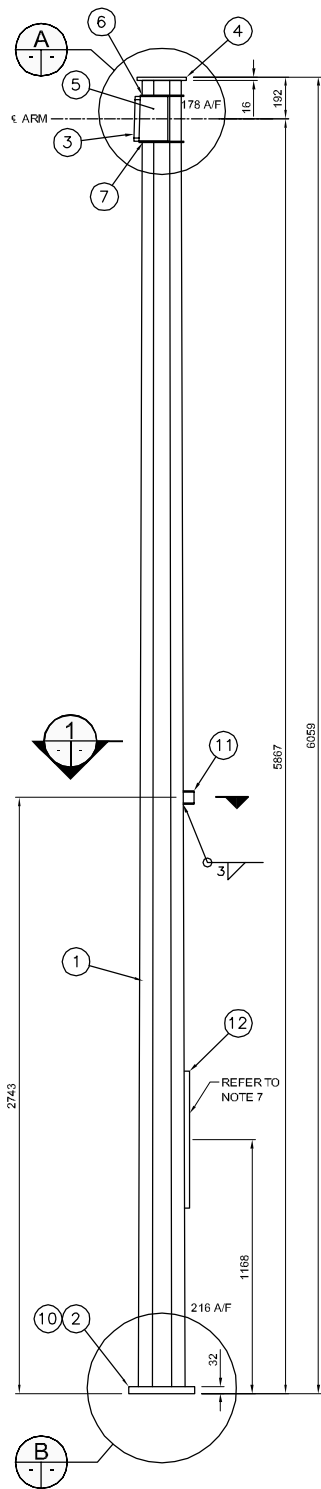
ORIENTATION



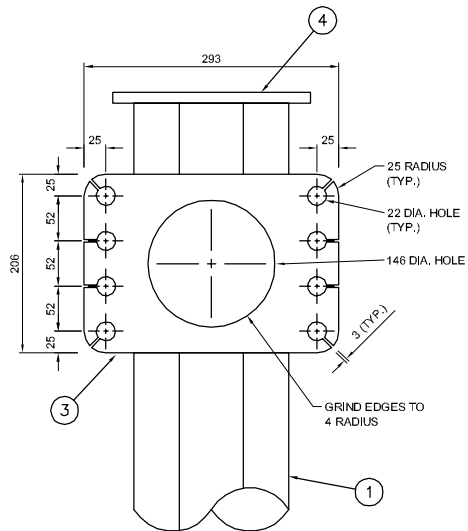
PLAN-TOP VIEW



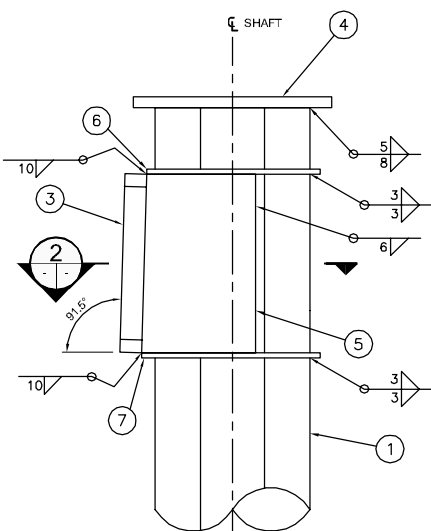
SECTION 1-1



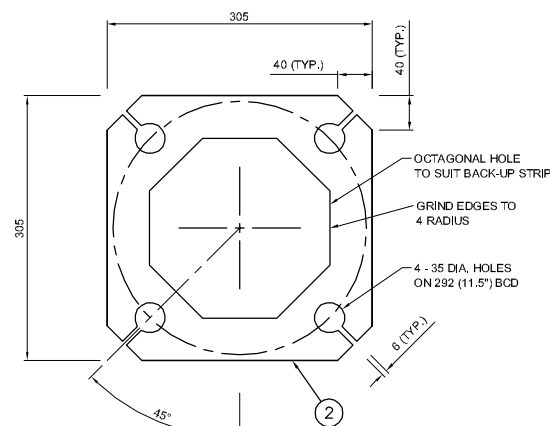
SHAFT ELEVATION



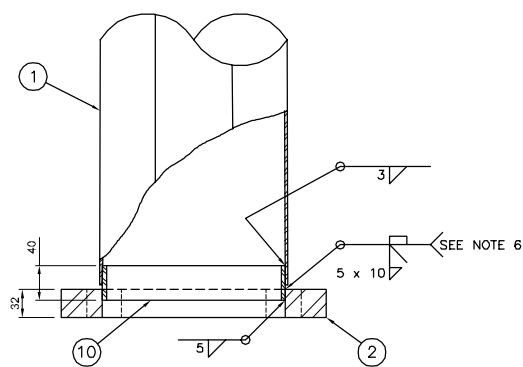
FRONT VIEW



SIDE VIEW

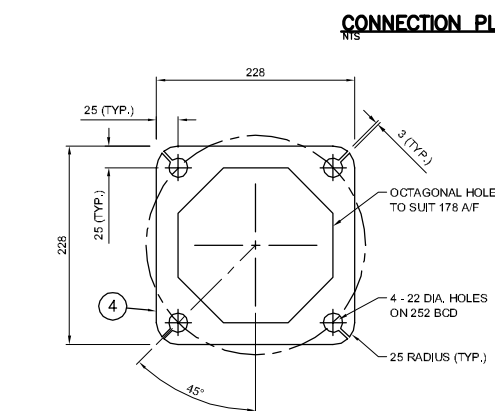


PLAN

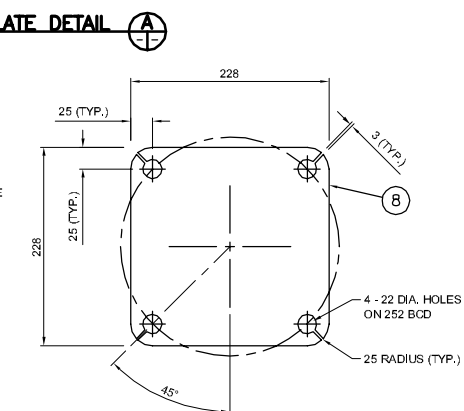


ELEVATION

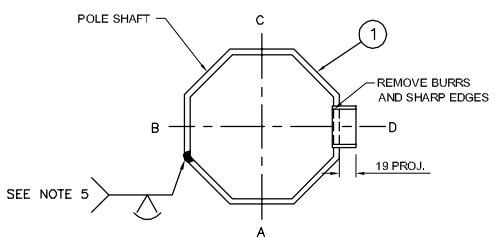
BASE PLATE DETAIL 1-1



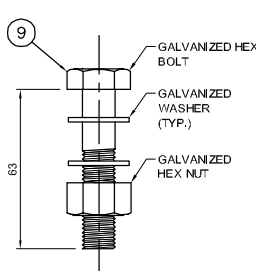
EXTENSION FLANGE PLATE DETAIL A



EXTENSION FLANGE CAP PLATE DETAIL B



SECTION 2-2



CAP PLATE BOLT DETAIL

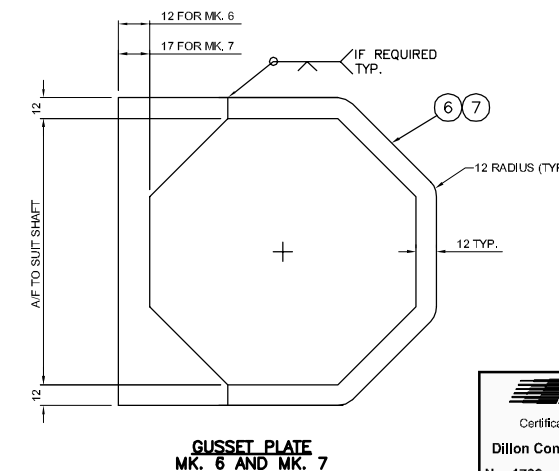
BILL OF MATERIALS

MK. NO.	QTY. REQ'D.	DESCRIPTION	SIZE	MATERIAL	REMARKS	LINE NO.
		MEDIUM DUTY SHAFT - M				1
1	1	OCTAGONAL SECTION SHAFT	216 A/F - 178 A/F x 4.554	CSA G40.21 350W		2
2	1	BASE PLATE	32 x 305 x 305	CSA G40.21 300W		3
3	1	ARM FLANGE PLATE	25 x 206 x 293	CSA G40.21 300W		4
4	1	EXTENSION FLANGE PLATE	16 x 228 x 228	CSA G40.21 300W	SEE DETAIL C	5
5	2	SIDE PLATES	6 x 131 x 206	CSA G40.21 300W		6
6	1	TOP GUSSET PLATE	10 x 202 x 202	CSA G40.21 300W		7
7	1	BOTTOM GUSSET PLATE	10 x 202 x 207	CSA G40.21 300W		8
8	1	EXTENSION FLANGE CAP PLATE	6 x 228 x 228	CSA G40.21 300W	SEE DETAIL D	9
9	4	CAP PLATE BOLT	19 (3/4") DIA. x 63	ASTM A325	SEE DETAIL E	10
10	1	BACK-UP STRIP PLATE	4.554 x 40	CSA G40.21 350W		11
11	1	PIPE PENETRATION (1 1/2") C/W PLUG	48 O.D. X 25	ASTM A53 GR. B SCH. 40	REMOVE BURRS AND SHARP EDGES	12
						13
12	1	ACCESS PANEL			SEE NOTE 7	14
						15
13	1	BREAKAWAY BASE ASSEMBLY			SUPPLIED BY OTHERS	16

APPROXIMATE TOTAL MASS = 170 kg

NOTES:

- ALL MATERIALS, EXCEPT STAINLESS STEEL ITEMS, SHALL BE HOT DIP GALVANIZED IN ACCORDANCE WITH ASTM A123-09 (PLUS LATEST REVISIONS) WITH NET RETENTION OF 610 g/m².
- PROVIDE RAISED IDENTIFICATION NUMBER WITH WELDING ELECTRODE AS PER SPECIFICATION, STRUCTURE TYPE CODE = M.
- SHIP WITH EXTENSION FLANGE CAP PLATE C/W NUTS AND WASHERS INSTALLED.
- GRIND ALL SHARP POINTS AND EDGES.
- LONGITUDINAL SEAM WELD SHALL HAVE 60% MINIMUM PENETRATION EXCEPT WITHIN 150 mm OF BASE PLATE AND 400 mm OF EXTENSION FLANGE PLATE SHALL BE COMPLETE PENETRATION.
- EXTERIOR WELD JOINING SHAFT TO BASE PLATE SHALL BE AN UNEQUAL LEG COMPLETE PENETRATION WELD WITH THE LONG LEG OF THE WELD ALONG THE SHAFT, TERMINATING AT 30' FROM THE SHAFT'S SURFACE.
- PROVIDE ACCESS PANEL IN ACCORDANCE WITH SHEET 13.

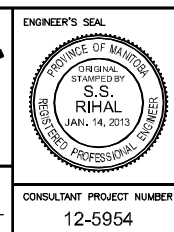
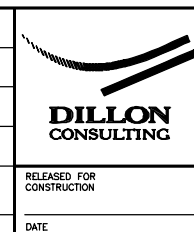


GUSSET PLATE MK. 6 AND MK. 7



REDUCED DRAWING N.T.S.

B.M. ELEV.	DESIGNED BY	CDW
	DRAWN BY	JGW
	CHECKED BY	SSR
	APPROVED BY	-
	HOR. SCALE	NTS
	VERTICAL SCALE	NTS
1	ISSUED BY	DILLON CONSULTING
	DATE	1/14/13
	BY	CDW
	DATE	



THE CITY OF WINNIPEG PUBLIC WORKS DEPARTMENT

Winnipeg

MEDIUM DUTY SHAFT

CITY DRAWING NUMBER: N/A

SHEET 9 OF 13

CONSULTANT PROJECT NUMBER: 12-5954

CONSULTANT DRAWING NUMBER: N/A