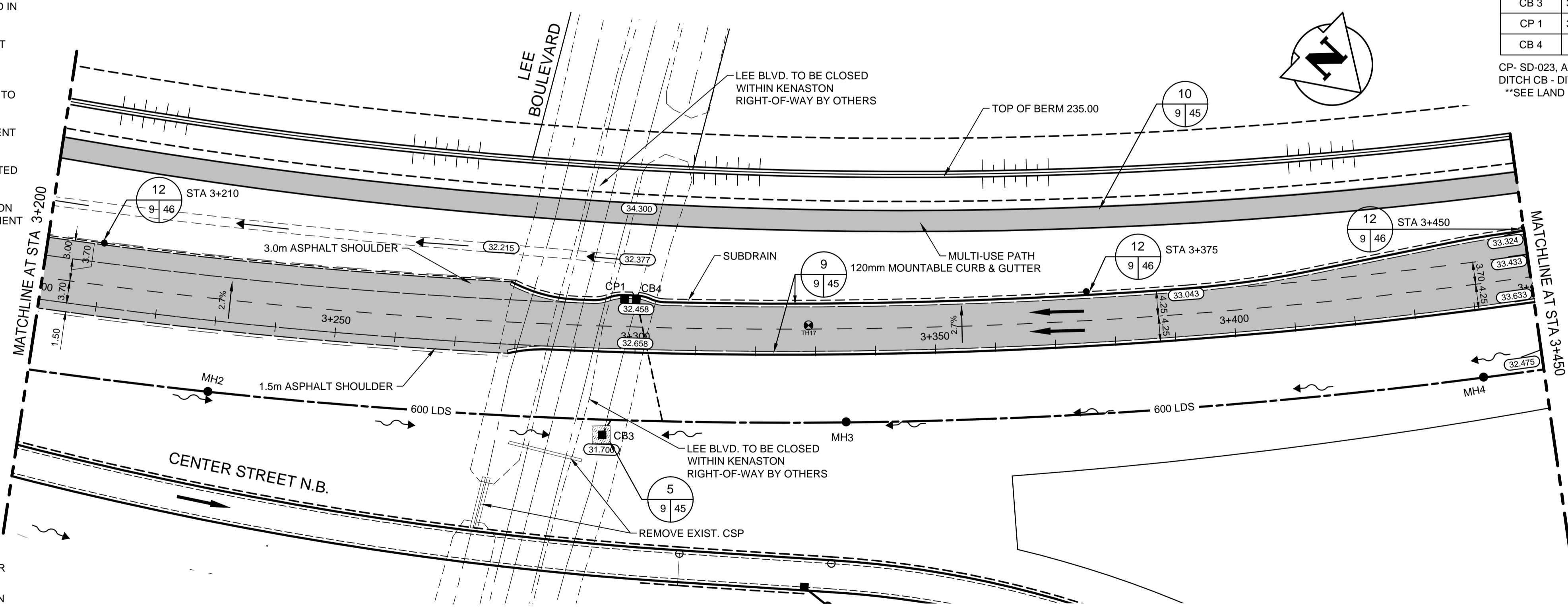


- CONSTRUCTION NOTES:**
- EACH CATCH BASIN (CB) AND CATCH PIT (CP) INSTALLED IN PAVEMENT TO HAVE AP-011 FRAME AND COVER.
 - EACH DITCH INLET CATCH BASIN TO HAVE A DITCH INLET GRATE AS PER DETAIL SHEET 45.
 - CONTRACTOR TO EXPOSE AND VERIFY INVERTS OF ALL JUNCTIONS OR CONNECTIONS TO MAINLINE LDS PRIOR TO INSTALLATION OF CATCH BASINS.
 - CLASS 3 BACKFILL TO BE USED WITHIN 1.0m OF PAVEMENT FOR ALL UNDERGROUND INSTALLATIONS.
 - EXISTING MANHOLES AND CATCH BASINS TO BE ADJUSTED TO DESIGN ELEVATION.
 - INSTALL 200mm PLAIN DOWELLED CONCRETE TRANSITION SLABS C/W ASPHALT OVERLAY WHERE ASPHALT PAVEMENT MATCHES CONCRETE PAVEMENT.
 - ADD 200.00 M TO ABBREVIATED ELEVATION TO OBTAIN GEODETIC ELEVATION.

KENASTON BOULEVARD SOUTHBOUND



CATCH BASIN, CATCH PIT, DITCH INLET & MANHOLES STRUCTURE AND LOCATION SCHEDULE						
TYPE	STATION	O/S FROM CONTROL	RIM ELEV	BOT. ELE	LEAD INV	PIPE LEAD
CB 3	3+295.000	14.394 R	231.700	229.450	W 230.050	229.565 3.0m - 300mm/GR= 16.16%
CP 1	3+297.980	8.950 L	232.426	231.526	W 231.526	- 2.0m - 250mm
CB 4	3+300.000	8.950 L	232.416	230.166	E 230.766	229.545 20.7m - 300mm/ GR=5.90%

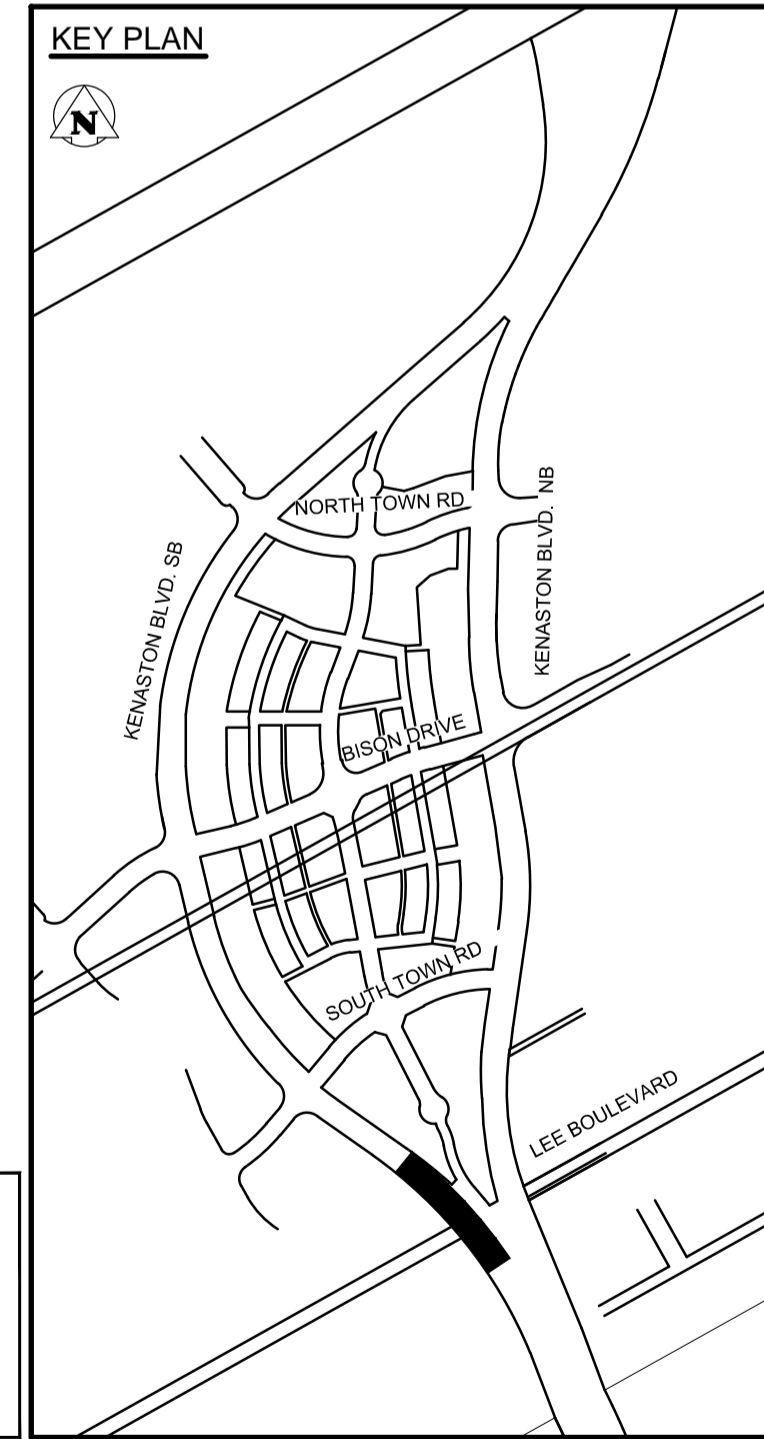
CP- SD-023, AP-011 ROAD CB - SD-024, AP-011
 DITCH CB - DITCH INLET GRATE MH - SD-010, AP-004, AP-005
 **SEE LAND DRAINAGE DRAWINGS FOR MH INFORMATION

METRIC

WHOLE NUMBERS INDICATE MILLIMETRES
 DECIMALIZED NUMBERS INDICATE METRES

WARNING

- IF POWER EQUIPMENT OR EXPLOSIVES ARE TO BE USED FOR EXCAVATION ON THIS PROJECT THE CONTRACTOR MUST:
- NOTIFY THE GAS COMPANY OF THE PROPOSED LOCATION OF EXCAVATION.
 - TAKE PRECAUTION TO AVOID DAMAGE TO GAS COMPANY INSTALLATIONS SEE PROVINCIAL REGULATION 210/72 FOR DETAILS.
 - OBTAIN EXCAVATION PERMITS PRIOR TO CONSTRUCTION.



APEGM
 Certificate of Authorization
 Stantec Consulting Ltd.
 No. 1301

84R635 - Lake Crest Rd. & Waverley St. Tblt on top of 0.05m dia. x 2.4m iron pipe, 14.2m N. of S.L. of Lake Crest Rd. & 0.6m E. of E.L. of Waverley St.

150 WM	WATERMAIN	150 WM	MTS	M.T.S.	150 mm W.M.	WATERMAIN	150 mm W.M.
+	HYDRANT VALVE	+	MTS	CONCRETE ASPHALT PLANING SIDEWALK	+	HYDRANT VALVE	+
300 LDS	LAND DRAINAGE SEWER	300 LDS	MTS	PAVING STONES	300 mm L.D.S.	LAND DRAINAGE SEWER	300 mm L.D.S.
250 WWS	WASTE WATER SEWER	250 WWS	MTS	PROPERTY LINE SURVEY BAR	250 mm W.W.S.	WASTE WATER SEWER	250 mm W.W.S.
○	MANHOLE	●	MTS	CURB RAMP	○	NORTH/WEST GUTTER	○
⊕	CATCH BASIN	⊕	MTS	DITCH	⊕	SOUTH/EAST GUTTER	⊕
○	TEST HOLES	⊕	MTS	SWALE	○	NORTH/WEST T/LANE	○
○	CULVERT	○	MTS		○	SOUTH/EAST T/LANE	○
100 GAS	GAS	100 GAS	MTS		○		○
HYDRO	HYDRO	HYDRO	MTS		○		○
EXISTING	LEGEND-PLAN	PROPOSED	EXISTING	LEGEND-PLAN	PROPOSED	EXISTING	LEGEND-PROFILE

DESIGNED BY V.M.M., T.G.	DESIGN TEAM 	ENGINEER'S SEAL 	THE CITY OF WINNIPEG PUBLIC WORKS DEPARTMENT WWARP PART 3 - CONTRACT 1 STA 2+922.4 TO STA 5+935 KENASTON BOULEVARD EXTENSION - SB LANES PAVING & GRADING - KENASTON BLVD. SB STA 3+200 TO STA 3+450	CITY DRAWING NUMBER P-3345-9
DRAWN BY T.G.	CHECKED BY S.B.C.	APPROVED BY V.M.M.		SHEET 9 OF 64
B.M. 76-030 ELEV. 232.457m UNDERGROUND STRUCTURES SUPV. U/G STRUCTURES COMMITTEE DATE			RELEASED FOR CONSTRUCTION DATE	CONSULTANT DRAWING NUMBER C-202
NOTE: LOCATION OF UNDERGROUND STRUCTURES AS SHOWN ARE BASED ON THE BEST INFORMATION AVAILABLE. BUT NO GUARANTEE IS GIVEN THAT ALL EXISTING UTILITIES ARE SHOWN OR THAT THE GIVEN LOCATIONS ARE EXACT. CONFIRMATION OF EXISTENCE AND EXACT LOCATION OF ALL SERVICES MUST BE OBTAINED FROM THE INDIVIDUAL UTILITIES BEFORE PROCEEDING WITH CONSTRUCTION.			HORIZONTAL SCALE 1:500 VERTICAL SCALE 1:20	CONSULTANT PROJECT NUMBER 113705751
2 ISSUED FOR TENDER 3/04/08 V.M.M. 1 ISSUED FOR REVIEW 3/03/27 V.M.M. 0 ISSUED FOR 90% REVIEW 13/02/22 V.M.M.			DATE	DATE 12/11/06

VA 1137\active\113705751\drawing\404_working\sheet_files\05751c-201-xxx.dwg