

KENASTON BOULEVARD SOUTHBOUND

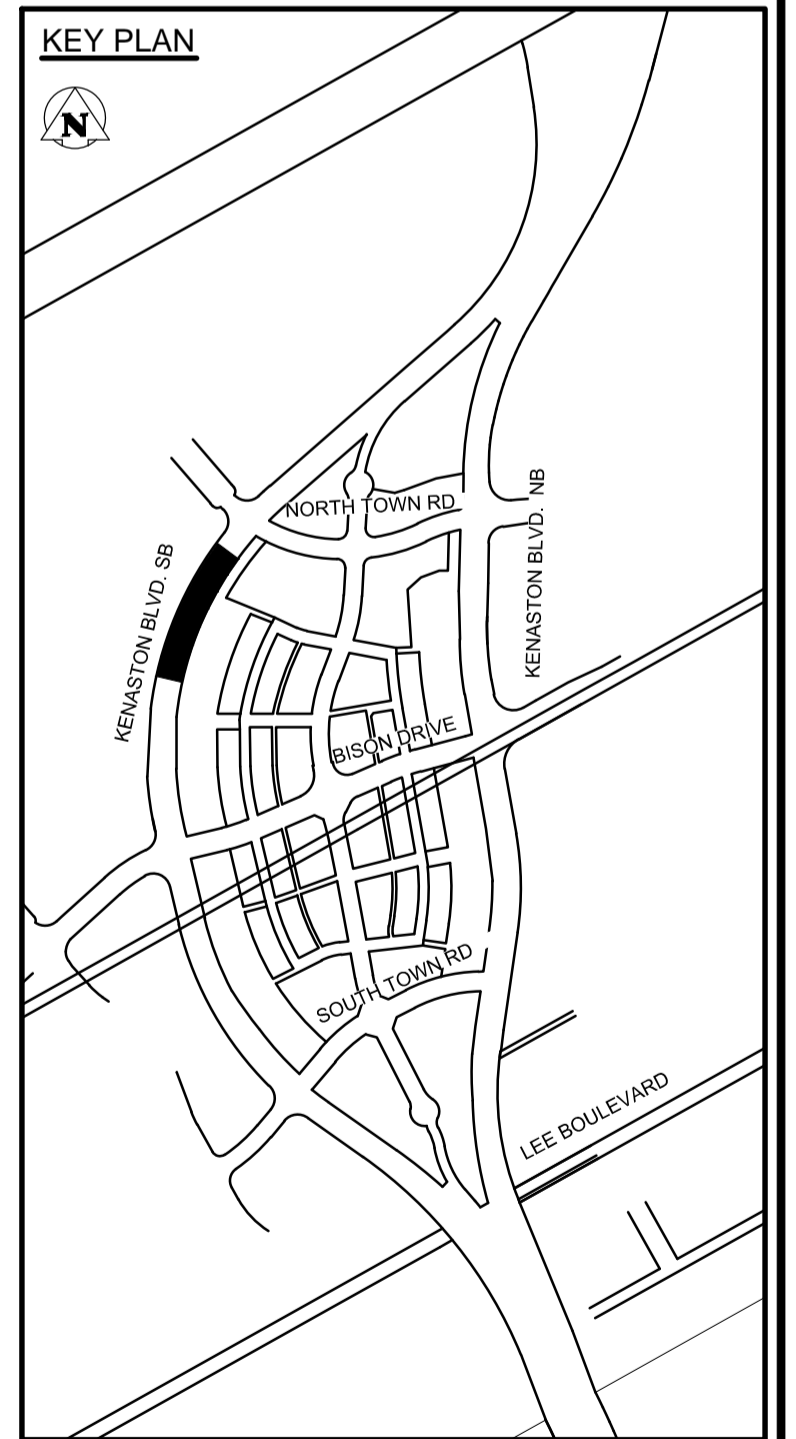
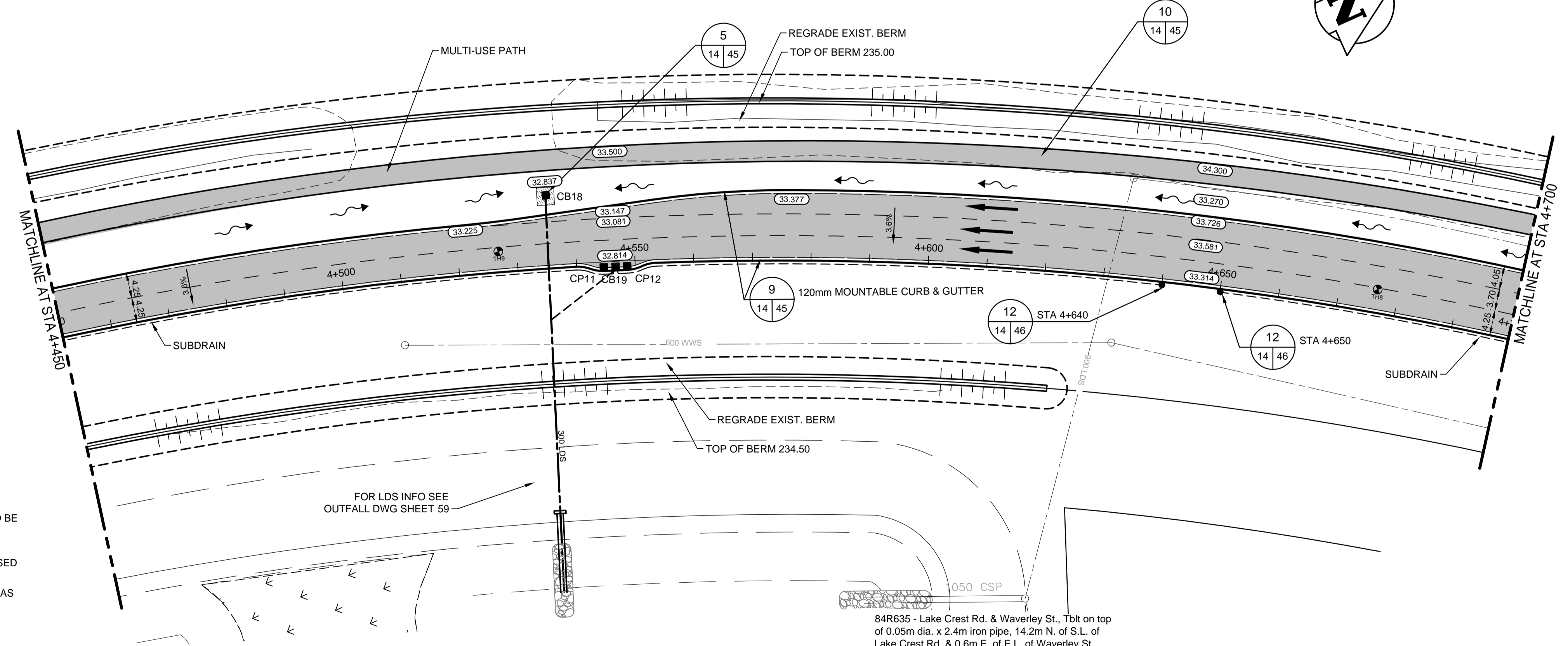
- CONSTRUCTION NOTES:**
- EACH CATCH BASIN (CB) AND CATCH PIT (CP) INSTALLED IN PAVEMENT TO HAVE AP-011 FRAME AND COVER.
 - EACH DITCH INLET CATCH BASIN TO HAVE A DITCH INLET GRATE AS PER DETAIL SHEET 45.
 - CONTRACTOR TO EXPOSE AND VERIFY INVERTS OF ALL JUNCTIONS OR CONNECTIONS TO MAINLINE LDS PRIOR TO INSTALLATION OF CATCH BASINS.
 - CLASS 3 BACKFILL TO BE USED WITHIN 1.0m OF PAVEMENT FOR ALL UNDERGROUND INSTALLATIONS.
 - EXISTING MANHOLES AND CATCH BASINS TO BE ADJUSTED TO DESIGN ELEVATION.
 - INSTALL 200mm PLAIN DOWELLED CONCRETE TRANSITION SLABS CW ASPHALT OVERLAY WHERE ASPHALT PAVEMENT MATCHES CONCRETE PAVEMENT.
 - ADD 200.0 M TO ABBREVIATED ELEVATION TO OBTAIN GEODETIC ELEVATION.

CATCH BASIN, CATCH PIT, DITCH INLET & MANHOLES STRUCTURE AND LOCATION SCHEDULE

TYPE	STATION	O/S FROM CONTROL	RIM ELEM. BOT. ELEV	LEAD INV.	MAIN INV.	PIPE LEAD
CB 18	4+535.570	11.932 L	232.837	230.587	E 231.187	56.5m - 300mm/GR=5.65%
CP 11	4+544.627	1.550 R	232.769	231.869	N 231.869	2.0m - 250mm
CB 19	4+546.627	1.550 R	232.758	230.023	N 230.623	8.0m - 300mm/GR=5.29%
CP 12	4+548.627	1.550 R	232.768	231.868	N 231.868	2.0m - 250mm

CP- SD-023, AP-011
DITCH CB - SD-025, DITCH INLET GRATE

ROAD CB - SD-024, AP-011
MH - SD-010, AP-004, AP-005



METRIC

WHOLE NUMBERS INDICATE MILLIMETRES
DECIMALIZED NUMBERS INDICATE METRES

WARNING

IF POWER EQUIPMENT OR EXPLOSIVES ARE TO BE USED FOR EXCAVATION ON THIS PROJECT THE CONTRACTOR MUST:

- NOTIFY THE GAS COMPANY OF THE PROPOSED LOCATION OF EXCAVATION.
- TAKE PRECAUTION TO AVOID DAMAGE TO GAS COMPANY INSTALLATIONS SEE PROVINCIAL REGULATION 210/72 FOR DETAILS.
- OBTAIN EXCAVATION PERMITS PRIOR TO CONSTRUCTION.

VA 1137\vertical\113705751\drawing\404_working\sheet_files\05751c-201-xxx.dwg

150 WM	WATERMAIN	150 WM	MTS	M.T.S.	150 mm W.M.	WATERMAIN	150 mm W.M.
+	HYDRANT VALVE	+	MTS	CONCRETE ASPHALT PLANING SIDEWALK	+	HYDRANT VALVE	+
300 LDS	LAND DRAINAGE SEWER	300 LDS	MTS	PAVING STONES	300 mm L.D.S.	LAND DRAINAGE SEWER	300 mm L.D.S.
250 WWS	WASTE WATER SEWER	250 WWS	MTS	PROPERTY LINE SURVEY BAR	250 mm W.W.S.	WASTE WATER SEWER	250 mm W.W.S.
○	MANHOLE	●	MTS	CURB RAMP	○	PROPERTY LINE SURVEY BAR	○
□	CATCH BASIN	■	MTS	DITCH	□	CATCH BASIN	■
○	TEST HOLES	⊕	MTS	SWALE	○	TEST HOLES	⊕
○	CULVERT	○	MTS		○	CULVERT	○
100 GAS	GAS	100 GAS	MTS		100 GAS	GAS	100 GAS
HYDRO	HYDRO	HYDRO	MTS		HYDRO	HYDRO	HYDRO
EXISTING	LEGEND-PLAN	PROPOSED	EXISTING	LEGEND-PLAN	PROPOSED	EXISTING	LEGEND-PROFILE

UNDERGROUND STRUCTURES

SUPV. U/G STRUCTURES COMMITTEE DATE

NOTE:
LOCATION OF UNDERGROUND STRUCTURES AS SHOWN ARE BASED ON THE BEST INFORMATION AVAILABLE. BUT NO GUARANTEE IS GIVEN THAT ALL EXISTING UTILITIES ARE SHOWN OR THAT THE GIVEN LOCATIONS ARE EXACT. CONFIRMATION OF EXISTENCE AND EXACT LOCATION OF ALL SERVICES MUST BE OBTAINED FROM THE INDIVIDUAL UTILITIES BEFORE PROCEEDING WITH CONSTRUCTION.

NO.	REVISIONS	DATE	BY	DATE
2	ISSUED FOR TENDER	13/04/08	V.M.M.	
1	ISSUED FOR REVIEW	13/03/27	V.M.M.	
0	ISSUED FOR 90% REVIEW	13/02/22	V.M.M.	

DESIGNED BY	DESIGN TEAM
V.M.M., T.G.	
DRAWN BY	
T.G.	
CHECKED BY	
S.B.C.	
APPROVED BY	
V.M.M.	
HOR. SCALE	1:500
VERTICAL	1:20
RELEASED FOR CONSTRUCTION	
DATE	12/11/06

ENGINEER'S SEAL

PROVINCE OF MANITOBA REGISTERED PROFESSIONAL ENGINEER

V.M. MAROTI MEMBER 30809

CONSULTANT PROJECT NUMBER 113705751

APEGM

Certificate of Authorization

Stantec Consulting Ltd.

No. 1301

THE CITY OF WINNIPEG PUBLIC WORKS DEPARTMENT

WWARP PART 3 - CONTRACT 1
STA 2+922.4 TO STA 5+935

KENASTON BOULEVARD EXTENSION - SB LANES
PAVING & GRADING - KENASTON BLVD. SB
STA 4+450 TO STA 4+700

CITY DRAWING NUMBER P-3345-14
SHEET 14 OF 64
CONSULTANT DRAWING NUMBER C-207