

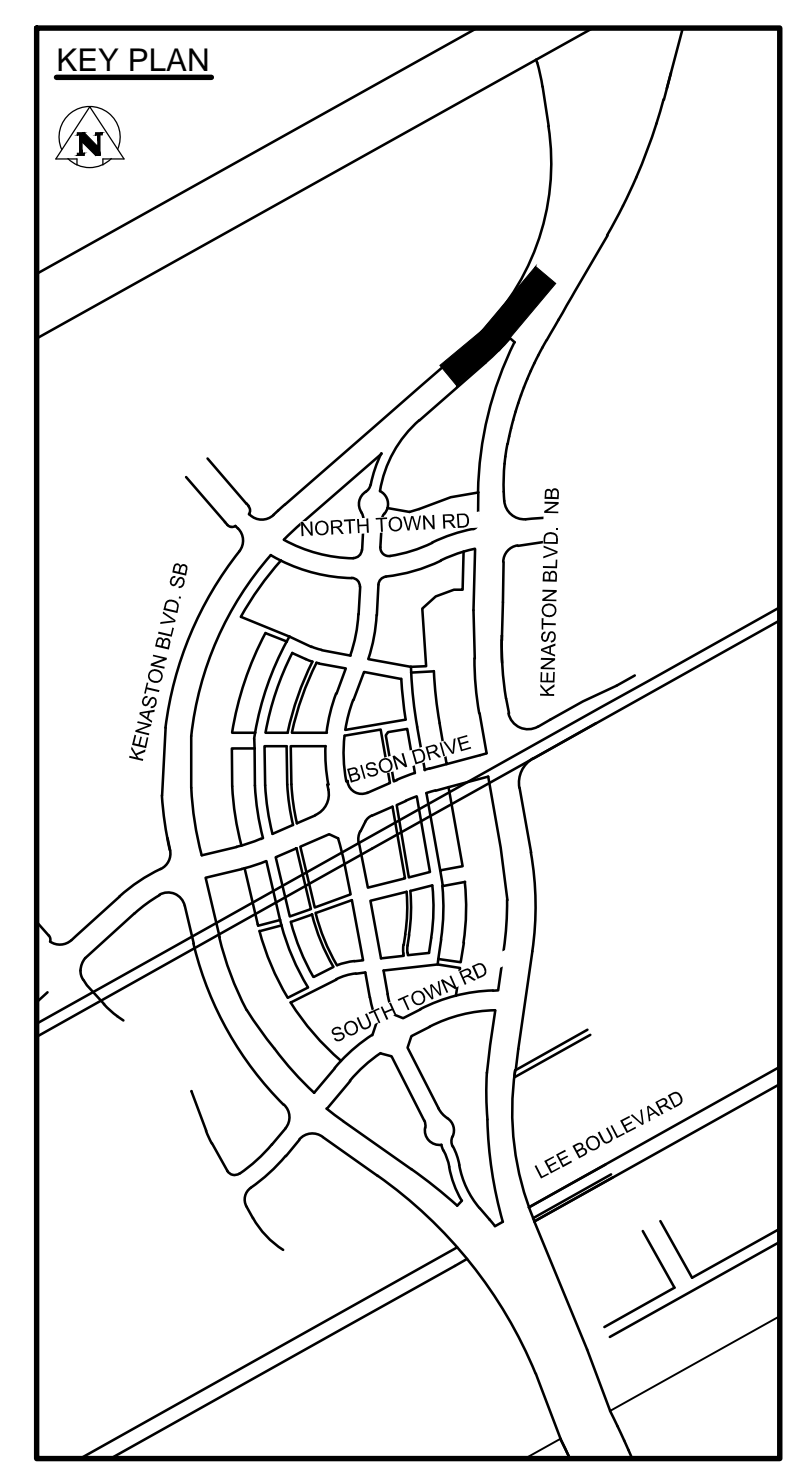
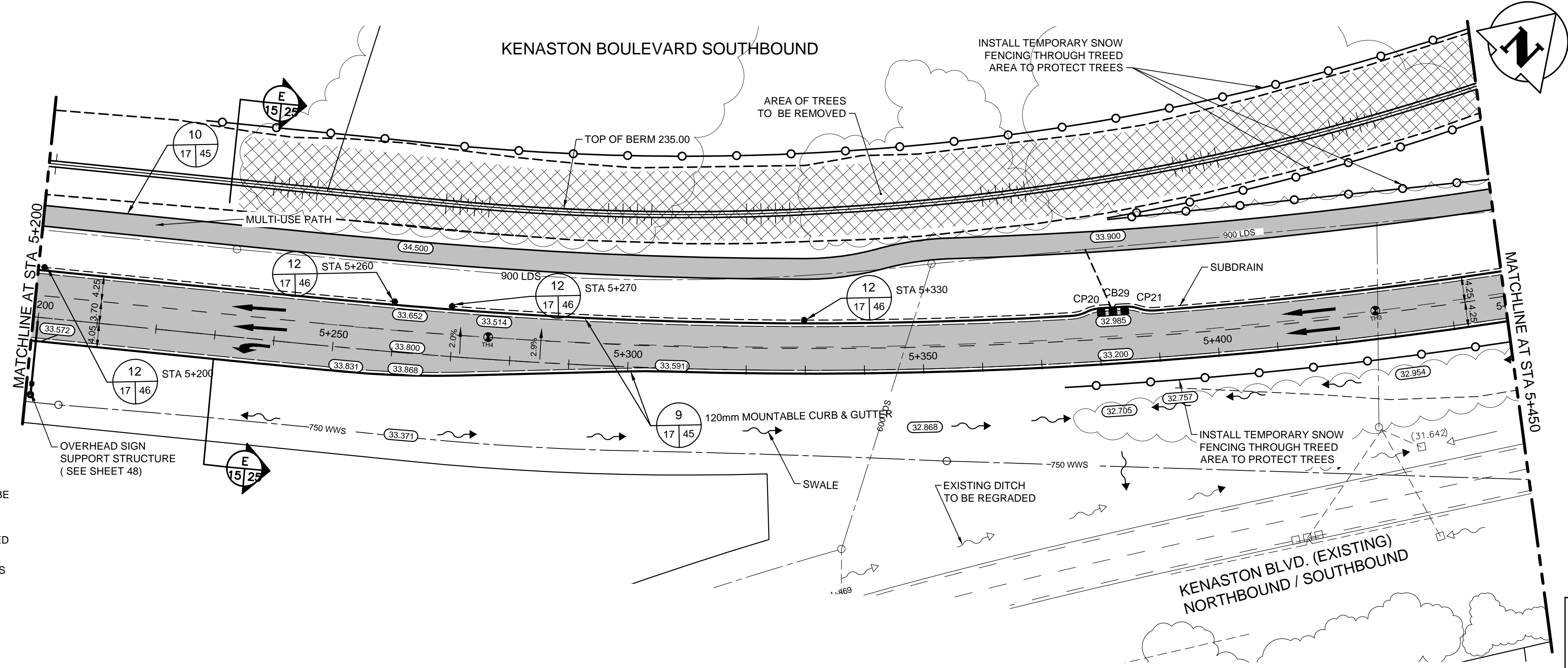
- CONSTRUCTION NOTES:**
- EACH CATCH BASIN (CB) AND CATCH PIT (CP) INSTALLED IN PAVEMENT TO HAVE AP-011 FRAME AND COVER.
 - EACH DITCH INLET CATCH BASIN TO HAVE A DITCH INLET GRATE AS PER DETAIL SHEET 45.
 - CONTRACTOR TO EXPOSE AND VERIFY INVERTS OF ALL JUNCTIONS OR CONNECTIONS TO MAINLINE LDS PRIOR TO INSTALLATION OF CATCH BASINS.
 - CLASS 3 BACKFILL TO BE USED WITHIN 1.0M OF PAVEMENT FOR ALL UNDERGROUND INSTALLATIONS.
 - EXISTING MANHOLES AND CATCH BASINS TO BE ADJUSTED TO DESIGN ELEVATION.
 - INSTALL 200mm PLAIN DOWELED CONCRETE TRANSITION SLABS C/W ASPHALT OVERLAY WHERE ASPHALT PAVEMENT MATCHES CONCRETE PAVEMENT.
 - ADD 200.00m TO ABBREVIATED ELEVATION TO OBTAIN GEODETIC ELEVATION.

CATCH BASIN, CATCH PIT, DITCH INLET & MANHOLES STRUCTURE AND LOCATION SCHEDULE

TYPE	STATION	O/S FROM CONTROL	RIM ELEV	BOT. ELEV	LEAD INV	MAIN INV	PIPE LEAD
CP 20	5+380.561	8.950 L	232.951	232.051	N 232.051	-	2.0m - 250mm
CB 29	5+382.561	8.950 L	232.941	230.691	W 231.291	W 229.150	11.5m - 300mm/GR=18.61%
CP 21	5+384.603	8.950 L	232.951	232.051	S 232.051	-	2.0m - 250mm

CP-SD-023, AP-011
DITCH CB - SD-025, DITCH INLET GRATE

ROAD CB - SD-024, AP-011
MH - SD-010, AP-004, AP-005



WARNING

- IF POWER EQUIPMENT OR EXPLOSIVES ARE TO BE USED FOR EXCAVATION ON THIS PROJECT THE CONTRACTOR MUST:
- NOTIFY THE GAS COMPANY OF THE PROPOSED LOCATION OF EXCAVATION.
 - TAKE PRECAUTION TO AVOID DAMAGE TO GAS COMPANY INSTALLATIONS SEE PROVINCIAL REGULATION 210/72 FOR DETAILS.
 - OBTAIN EXCAVATION PERMITS PRIOR TO CONSTRUCTION.

METRIC

WHOLE NUMBERS INDICATE MILLIMETRES
DECIMALIZED NUMBERS INDICATE METRES

150 WM	150 WM	M.T.S.	M.T.S.	150 mm W.M.	150 mm W.M.
HYDRANT VALVE	HYDRANT VALVE	CONCRETE ASPHALT	CONCRETE ASPHALT	HYDRANT VALVE	HYDRANT VALVE
300 LDS LAND DRAINAGE SEWER	300 LDS LAND DRAINAGE SEWER	PLANNING	PLANNING	300 mm L.D.S. LAND DRAINAGE SEWER	300 mm L.D.S. LAND DRAINAGE SEWER
250 WWS WASTE WATER SEWER	250 WWS WASTE WATER SEWER	SIDEWALK	SIDEWALK	250 mm W.W.S. WASTE WATER SEWER	250 mm W.W.S. WASTE WATER SEWER
MANHOLE	MANHOLE	PAVING STONES	PAVING STONES	PROPERTY LINE	PROPERTY LINE
CATCH BASIN	CATCH BASIN	SURVEY BAR	SURVEY BAR	CURB RAMP	CURB RAMP
TEST HOLES	TEST HOLES	DITCH	DITCH	SWALE	SWALE
CULVERT	CULVERT				
100 GAS	100 GAS				
HYDRO	HYDRO				
EXISTING	LEGEND-PLAN	PROPOSED	EXISTING	LEGEND-PROFILE	PROPOSED

UNDERGROUND STRUCTURES

SUPV. U/G STRUCTURES COMMITTEE DATE

NOTE:
LOCATION OF UNDERGROUND STRUCTURES AS SHOWN ARE BASED ON THE BEST INFORMATION AVAILABLE, BUT NO GUARANTEE IS GIVEN THAT ALL EXISTING UTILITIES ARE SHOWN OR THAT THE GIVEN LOCATIONS ARE EXACT. CONFIRMATION OF EXISTENCE AND EXACT LOCATION OF ALL SERVICES MUST BE OBTAINED FROM THE INDIVIDUAL UTILITIES BEFORE PROCEEDING WITH CONSTRUCTION.

84R635 - Lake Crest Rd. & Waverley St., Tblt on top of 0.05m dia. x 2.4m iron pipe, 14.2m N. of S.L. of Lake Crest Rd. & 0.6m E. of E.L. of Waverley St.

B.M. 76-030 ELEV. 232.457m	DESIGNED BY V.M.M., T.G.	DESIGN TEAM	ENGINEER'S SEAL PROVINCE OF MANITOBA REGISTERED PROFESSIONAL ENGINEER V.M. MAROTI MEMBER 30809
	DRAWN BY T.G.		
	CHECKED BY S.B.C.		
	APPROVED BY V.M.M.		
	HOR. SCALE 1:500	RELEASED FOR CONSTRUCTION	CONSULTANT PROJECT NUMBER 113705751
	VERTICAL 1:20		
	DATE 12/11/06		



THE CITY OF WINNIPEG PUBLIC WORKS DEPARTMENT

WWARP PART 3 - CONTRACT 1
STA 2+922.4 TO STA 5+935

KENASTON BOULEVARD EXTENSION - SB LANES
PAVING & GRADING - KENASTON BLVD. SB
STA 5+200 TO STA 5+450

CITY DRAWING NUMBER
P-3345-17

SHEET 17 OF 64

CONSULTANT DRAWING NUMBER
C-210

VA 1137\civ\113705751\drawing\404_working\sheet_files\05751c-208-xxx.dwg