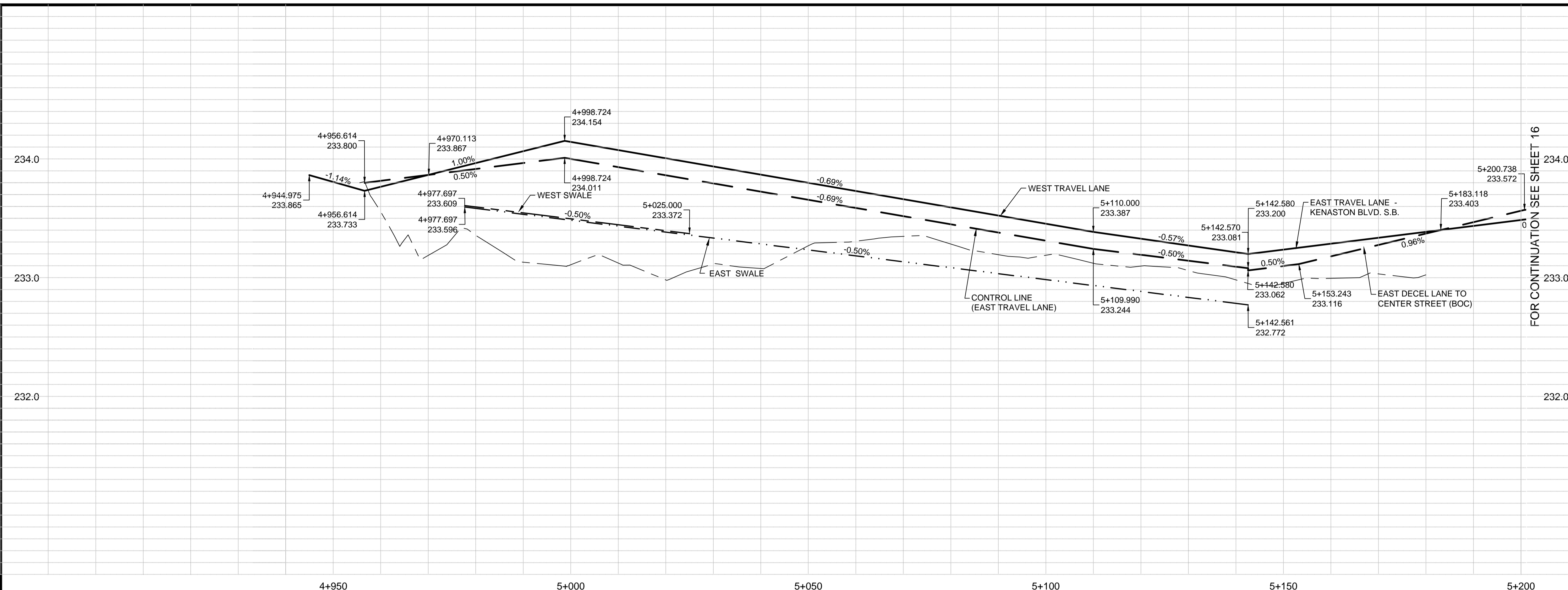
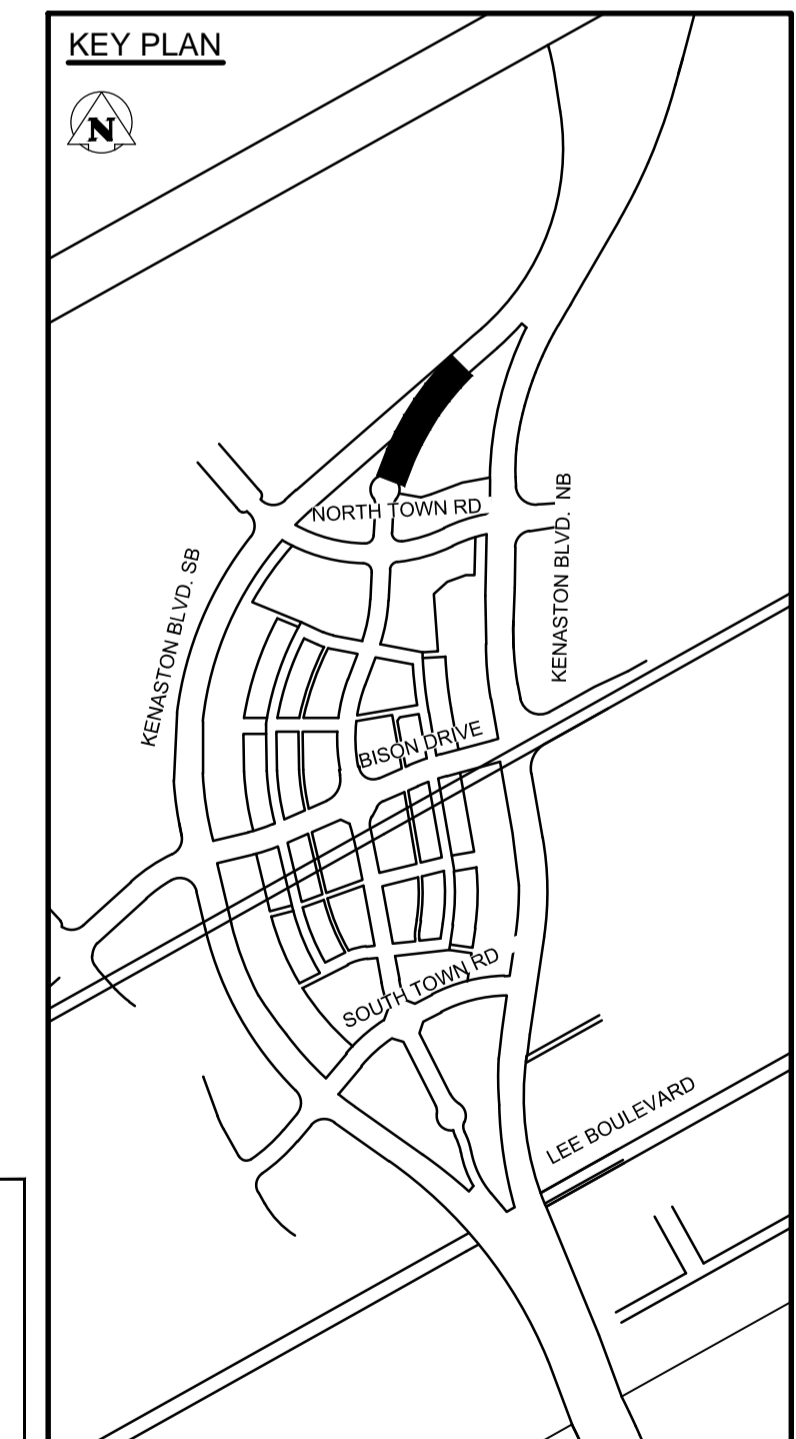
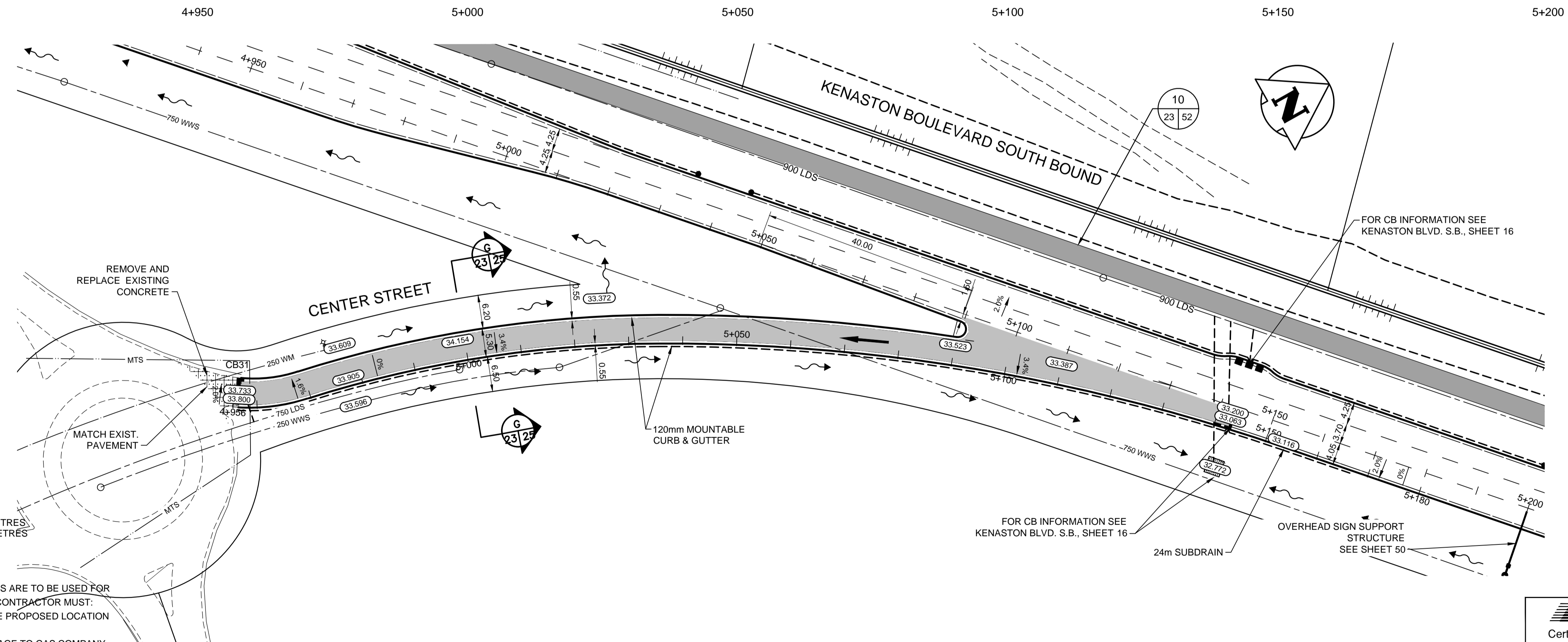


**CONSTRUCTION NOTES:**

1. EACH CATCH BASIN (CB) AND CATCH PIT (CP) INSTALLED IN PAVEMENT TO HAVE AP-011 FRAME AND COVER.
2. EACH DITCH INLET CATCH BASIN TO HAVE A DITCH INLET GRATE AS PER DETAIL SHEET 45.
3. CONTRACTOR TO EXPOSE AND VERIFY INVERTS OF ALL JUNCTIONS OR CONNECTIONS TO MAINLINE LDS PRIOR TO INSTALLATION OF CATCH BASINS.
4. CLASS 3 BACKFILL TO BE USED WITHIN 1.0m OF PAVEMENT FOR ALL UNDERGROUND INSTALLATIONS.
5. EXISTING MANHOLES AND CATCH BASINS TO BE ADJUSTED TO DESIGN ELEVATION.
6. 200mm CONCRETE TRANSITION SLABS C/W ASPHALT OVERLAY TO BE INSTALLED WHERE ASPHALT PAVEMENT MATCHES CONCRETE PAVEMENT.
7. ADD 200.00m TO ABBREVIATED ELEVATION TO OBTAIN GEODETIC ELEVATION.



FOR CONTINUATION SEE SHEET 16



**METRIC**  
WHOLE NUMBERS INDICATE MILLIMETRES,  
DECIMALIZED NUMBERS INDICATE METRES

- WARNING**  
IF POWER EQUIPMENT OR EXPLOSIVES ARE TO BE USED FOR EXCAVATION ON THIS PROJECT THE CONTRACTOR MUST:
1. NOTIFY THE GAS COMPANY OF THE PROPOSED LOCATION OF EXCAVATION.
  2. TAKE PRECAUTION TO AVOID DAMAGE TO GAS COMPANY INSTALLATIONS SEE PROVINCIAL REGULATION 210/72 FOR DETAILS.
  3. OBTAIN EXCAVATION PERMITS PRIOR TO CONSTRUCTION.

84R635 - Lake Crest Rd. & Waverly St., Tblt on top of 0.05m dia. x 2.4m iron pipe, 14.2m N. of S.L. of Lake Crest Rd. & 0.6m E. of E.L. of Waverly St.

**APEGM**  
Certificate of Authorization  
Stantec Consulting Ltd.  
No. 1301

150 WM	WATERMAIN	150 WM	MTS	M.T.S.	150 mm W.M.	WATERMAIN	150 mm W.M.
+	HYDRANT VALVE	+	MTS	CONCRETE ASPHALT PLANING	+	HYDRANT VALVE	+
300 LDS	LAND DRAINAGE SEWER	300 LDS	MTS	SIDEWALK PAVING STONES	300 mm L.D.S.	LAND DRAINAGE SEWER	300 mm L.D.S.
250 WWS	WASTE WATER SEWER	250 WWS	MTS	PROPERTY LINE SURVEY BAR	250 mm W.W.S.	WASTE WATER SEWER	250 mm W.W.S.
○	MANHOLE	●	MTS	CURB RAMP	○	NORTH/WEST GUTTER	---
□	CATCH BASIN	■	MTS	DITCH	□	NORTH/WEST T/LANE	---
⊕	TEST HOLES	⊕	MTS	SWALE	⊕	SOUTH/EAST T/LANE	---
○	CULVERT	○	MTS		○		---
100 GAS	GAS	100 GAS	MTS		100 GAS		---
HYDRO	HYDRO	HYDRO	MTS		HYDRO		---
EXISTING	LEGEND-PLAN	PROPOSED	EXISTING	LEGEND-PLAN	PROPOSED	EXISTING	LEGEND-PROFILE

**UNDERGROUND STRUCTURES**  
SUPV. U/G STRUCTURES COMMITTEE DATE \_\_\_\_\_

**NOTE:**  
LOCATION OF UNDERGROUND STRUCTURES AS SHOWN ARE BASED ON THE BEST INFORMATION AVAILABLE. BUT NO GUARANTEE IS GIVEN THAT ALL EXISTING UTILITIES ARE SHOWN OR THAT THE GIVEN LOCATIONS ARE EXACT. CONFIRMATION OF EXISTENCE AND EXACT LOCATION OF ALL SERVICES MUST BE OBTAINED FROM THE INDIVIDUAL UTILITIES BEFORE PROCEEDING WITH CONSTRUCTION.

B.M. 76-030	ELEV. 232.457m	DESIGNED BY	V.M.M., T.G.
		DRAWN BY	T.G.
		CHECKED BY	S.B.C.
		APPROVED BY	V.M.M.
2	ISSUED FOR TENDER	3/04/08	V.M.M.
1	ISSUED FOR REVIEW	3/03/27	V.M.M.
0	ISSUED FOR 90% REVIEW	3/02/22	V.M.M.
NO.	REVISIONS	DATE	BY
		12/11/14	

DESIGN TEAM	
RELEASED FOR CONSTRUCTION	DATE

ENGINEER'S REGISTRATION NUMBER	113705751
--------------------------------	-----------

**PROVINCE OF MANITOBA**  
REGISTERED PROFESSIONAL ENGINEER  
V.M. MAROTI  
MEMBER 30609

**THE CITY OF WINNIPEG**  
PUBLIC WORKS DEPARTMENT

WWARP PART 3 - CONTRACT 1  
STA 2+922.4 TO STA 5+935

KENASTON BOULEVARD EXTENSION - SB LANES  
PAVING & GRADING - CENTER STREET NORTH  
STA 4+956.579 TO STA 5+180.000

CITY DRAWING NUMBER: P-3345-23  
SHEET: 23 OF 64  
CONSULTANT DRAWING NUMBER: C-216

VA 113705751.dwg 11/30/2015 11:37:05 AM