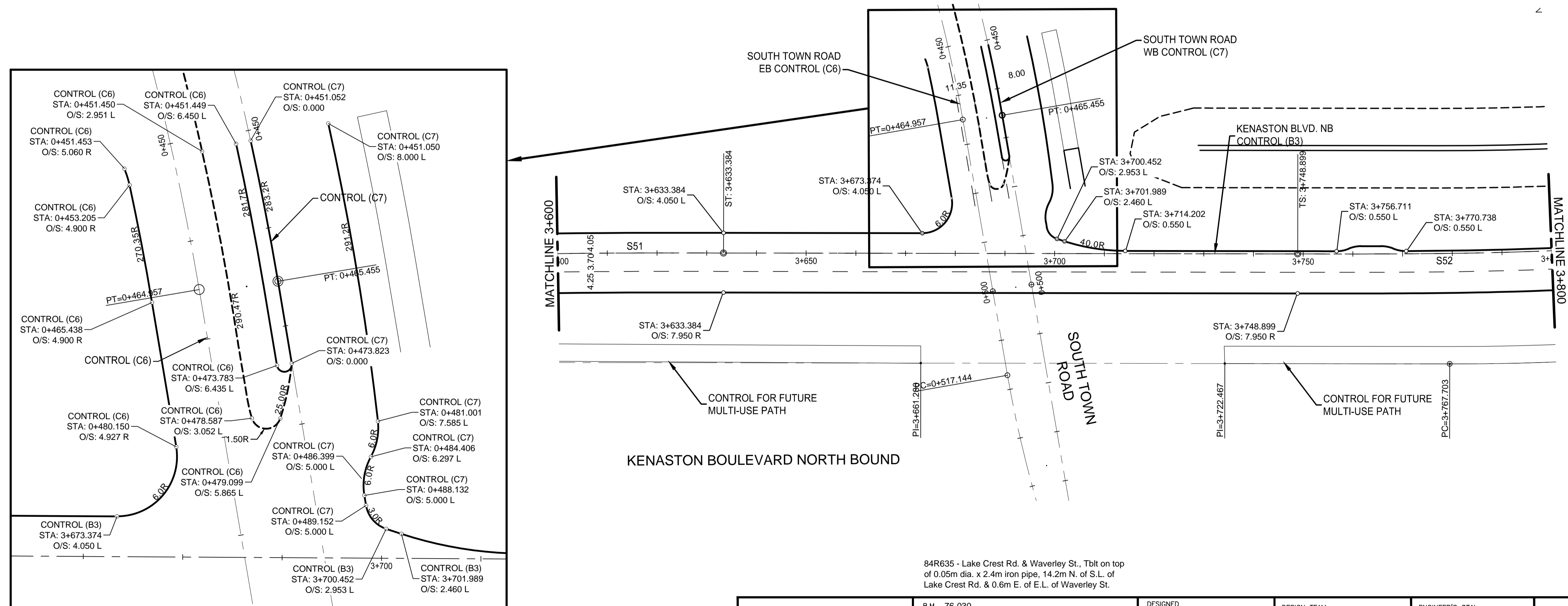
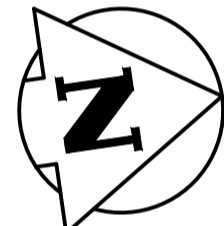


NOTE: SEE SHEET 30 FOR HORIZONTAL CONTROL GEOMETRY DATA TABLES



84R635 - Lake Crest Rd. & Waverley St., Tilt on top of 0.05m dia. x 2.4m iron pipe, 14.2m N. of S.L. of Lake Crest Rd. & 0.6m E. of E.L. of Waverley St.



WARNING

- IF POWER EQUIPMENT OR EXPLOSIVES ARE TO BE USED FOR EXCAVATION ON THIS PROJECT THE CONTRACTOR MUST:
1. NOTIFY THE GAS COMPANY OF THE PROPOSED LOCATION OF EXCAVATION.
 2. TAKE PRECAUTION TO AVOID DAMAGE TO GAS COMPANY INSTALLATIONS SEE PROVINCIAL REGULATION 210/72 FOR DETAILS.
 3. OBTAIN EXCAVATION PERMITS PRIOR TO CONSTRUCTION.

METRIC

WHOLE NUMBERS INDICATE MILLIMETRES
DECIMALIZED NUMBERS INDICATE METRES

UNDERGROUND STRUCTURES SUPV. U/G STRUCTURES COMMITTEE DATE NOTE: LOCATION OF UNDERGROUND STRUCTURES AS SHOWN ARE BASED ON THE BEST INFORMATION AVAILABLE, BUT NO GUARANTEE IS GIVEN THAT ALL EXISTING UTILITIES ARE SHOWN OR THAT THE GIVEN LOCATIONS ARE EXACT. CONFIRMATION OF EXISTENCE AND EXACT LOCATION OF ALL SERVICES MUST BE OBTAINED FROM THE INDIVIDUAL UTILITIES BEFORE PROCEEDING WITH CONSTRUCTION.	B.M. 76-030 ELEV. 232.457m	DESIGNED BY R.T.F., J.D.P. DRAWN BY J.D.P. CHECKED BY S.B.C. APPROVED BY V.M.M.	DESIGN TEAM 	ENGINEER'S SEAL 	THE CITY OF WINNIPEG PUBLIC WORKS DEPARTMENT WWARP PART 3 - CONTRACT 1 STA 2+922.4 TO STA 5+935	CITY DRAWING NUMBER P-3345-27 SHEET 27 OF 64 CONSULTANT DRAWING NUMBER C-122
	2 ISSUED FOR TENDER 3/04/08 V.M.M. 1 ISSUED FOR REVIEW 3/03/27 V.M.M. 0 ISSUED FOR 90% REVIEW 3/02/22 V.M.M.	HOR. SCALE 1:500 VERTICAL	RELEASED FOR CONSTRUCTION DATE	CONSULTANT PROJECT NUMBER 113705751	KENASTON BOULEVARD EXTENSION - NB LANES HORIZONTAL CONTROL GEOMETRY STA 3+400 TO STA 3+800	

V:\1137\active\113705751\drawing\404_working\sheet_files_nb\05751c-121-xx.dwg