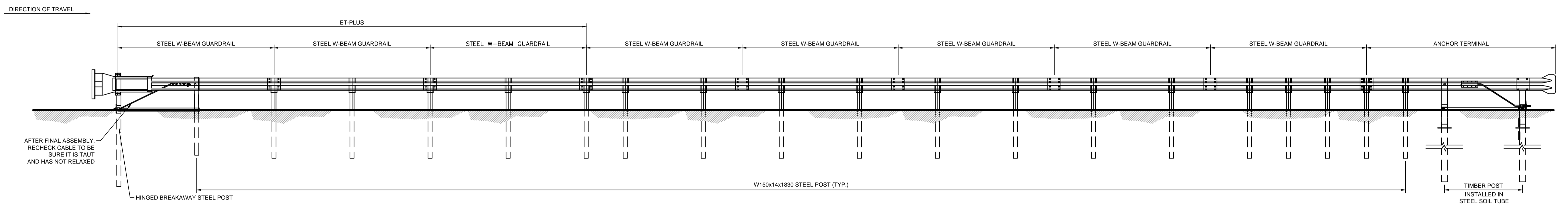
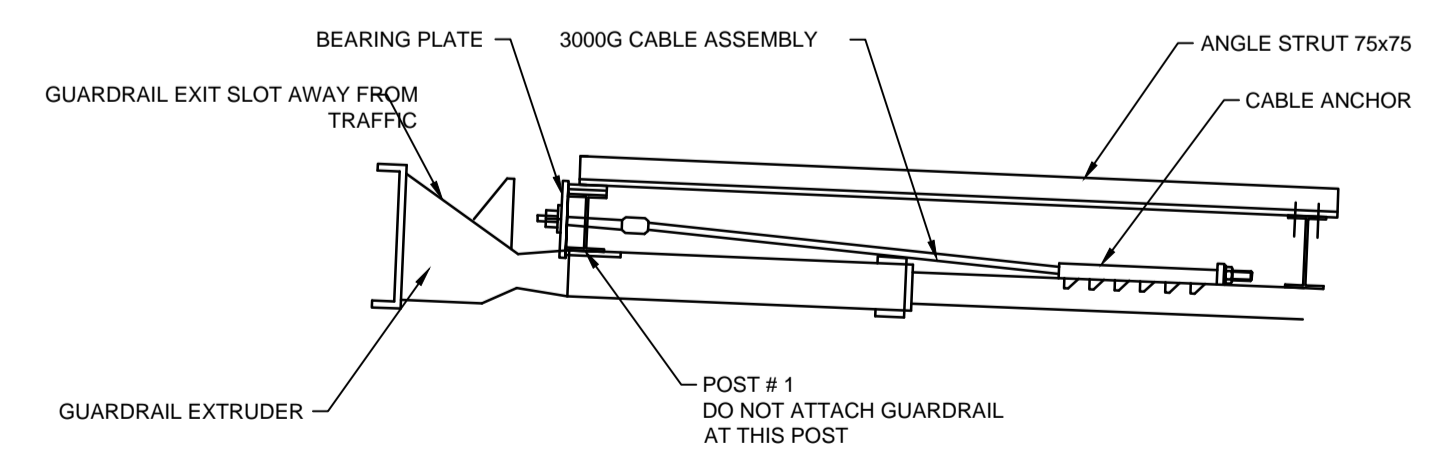


PLAN - MIDWEST GUARDRAIL SYSTEM  
1:50



ELEVATION LOOKING WEST - MIDWEST GUARDRAIL SYSTEM  
1:50



ET-PLUS IMPACT HEAD DETAILS  
1:20

**GENERAL NOTES**

- THIS SHEET IS INTENDED FOR ILLUSTRATION PURPOSES ONLY AND NOT TO BE USED FOR DESIGN OR INSTALLATION OF GUARDRAIL. ALL GUARDRAIL SHALL BE DESIGNED AND INSTALLED AS PER THE MANUFACTURER'S INSTRUCTIONS.
- THE ET-PLUS END TERMINAL SYSTEM IS SUPPLIED AS A COMPLETE UNIT INCLUDING ALL HARDWARE. THE CONTRACTOR SHALL FOLLOW THE MANUFACTURER'S INSTALLATION PROCEDURES AND SHOP DRAWINGS FOR FURTHER CLARITY.
- A HINGED BREAK-AWAY POST IS REQUIRED FOR THE ET-PLUS END TERMINAL SYSTEM.
- IF ROCK IS ENCOUNTERED DURING EXCAVATION FOR A 300 MM Ø POST HOLE, A 500 MM Ø MAY BE USED IF APPROVED BY THE CONTRACT ADMINISTRATOR. APPROVED GRANULAR MATERIAL SHALL BE PLACED IN THE BOTTOM OF THE HOLE APPROX. 65 MM DEEP TO PROVIDE DRAINAGE. THE SOIL TUBES SHALL BE FIELD CUT TO LENGTH, PLACED IN THE HOLE AND BACKFILLED WITH ADEQUATELY COMPACTED MATERIAL EXCAVATED FROM THE HOLE.
- THE BREAKAWAY CABLE ASSEMBLY MUST BE TAUT, A LOCKING DEVICE (VICE GRIPS OR CHANNEL LOCK PLIERS) SHOULD BE USED TO PREVENT THE CABLE FROM TWISTING WHEN TIGHTENING NUTS.



UNDERGROUND STRUCTURES  SUPV. U/G STRUCTURES COMMITTEE DATE  NOTE: LOCATION OF UNDERGROUND STRUCTURES AS SHOWN ARE BASED ON THE BEST INFORMATION AVAILABLE, BUT NO GUARANTEE IS GIVEN THAT ALL EXISTING UTILITIES ARE SHOWN OR THAT THE GIVEN LOCATIONS ARE EXACT. CONFIRMATION OF EXISTENCE AND EXACT LOCATION OF ALL SERVICES MUST BE OBTAINED FROM THE INDIVIDUAL UTILITIES BEFORE PROCEEDING WITH CONSTRUCTION.	B.M. ELEV.	DESIGNED BY B.Q.D.	DESIGN TEAM	ENGINEER'S SEAL	<b>THE CITY OF WINNIPEG</b> PUBLIC WORKS DEPARTMENT  WWARP PART 3 - CONTRACT 1 STA 2+922.4 TO STA 5+935  S767 - GUARDRAIL LAYOUT	CITY DRAWING NUMBER
		DRAWN BY B.Q.D.				S767-2013-03
	CHECKED BY K.S.A.	RELEASSED FOR CONSTRUCTION			CONSULTANT PROJECT NUMBER	SHEET 52 OF 64
	APPROVED BY K.S.A.	DATE	13/03/25	113705751	CONSULTANT DRAWING NUMBER	
	2 ISSUED FOR TENDER 3/04/08 K.S.A.				S-505	
	1 ISSUED FOR REVIEW 3/03/27 K.S.A.					
	0 ISSUED FOR 90% REVIEW 3/03/27 K.S.A.					
	NO. REVISIONS	DATE	BY	DATE		

V:\1137\active\113705751\drawing\404\_working\sheet\_files\05751s-505-guard-cl.dwg

**METRIC**  
WHOLE NUMBERS INDICATE MILLIMETRES  
DECIMALIZED NUMBERS INDICATE METRES