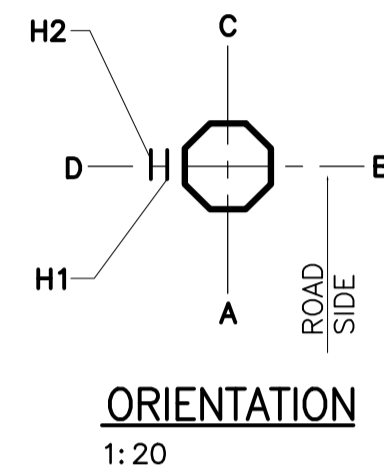
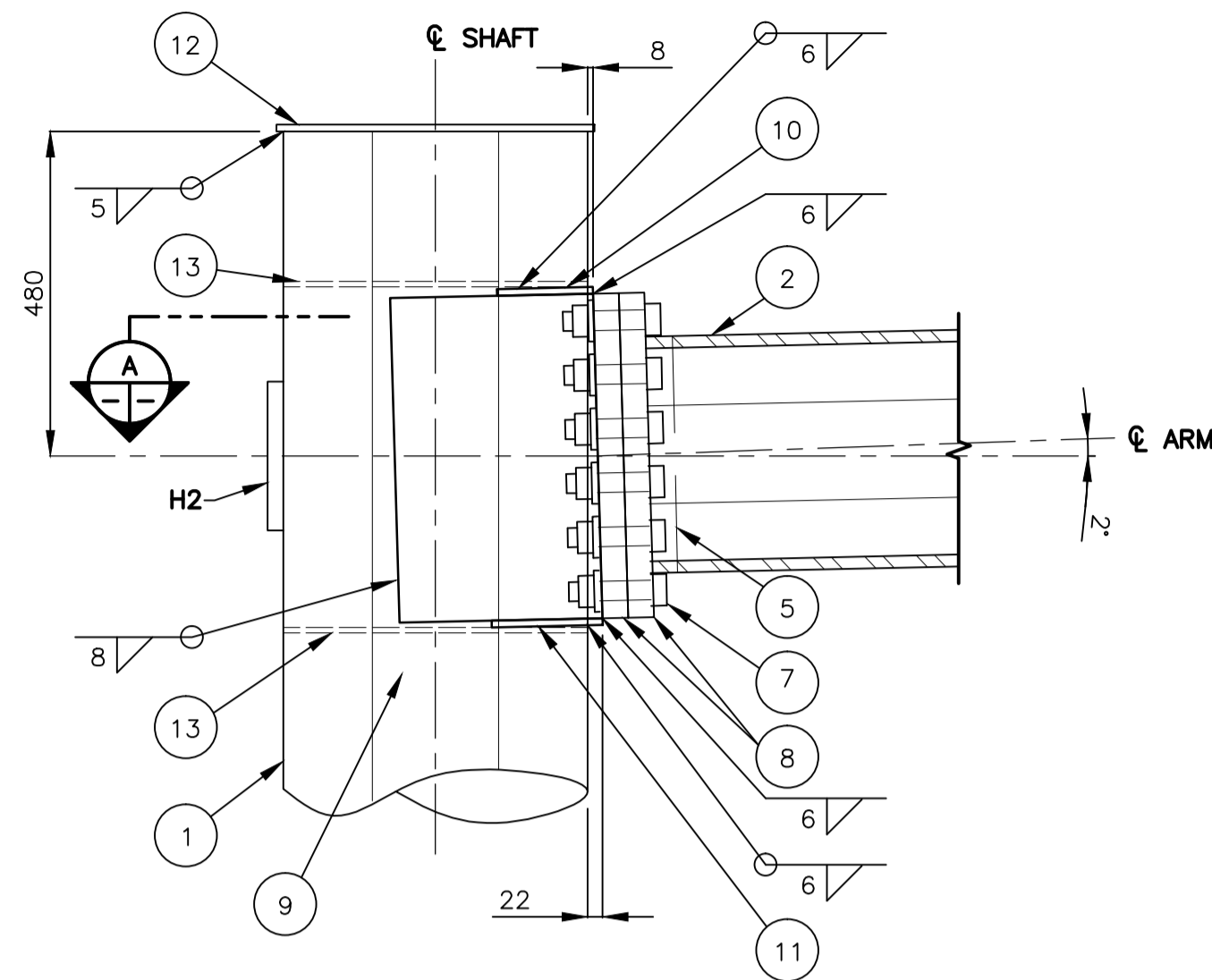


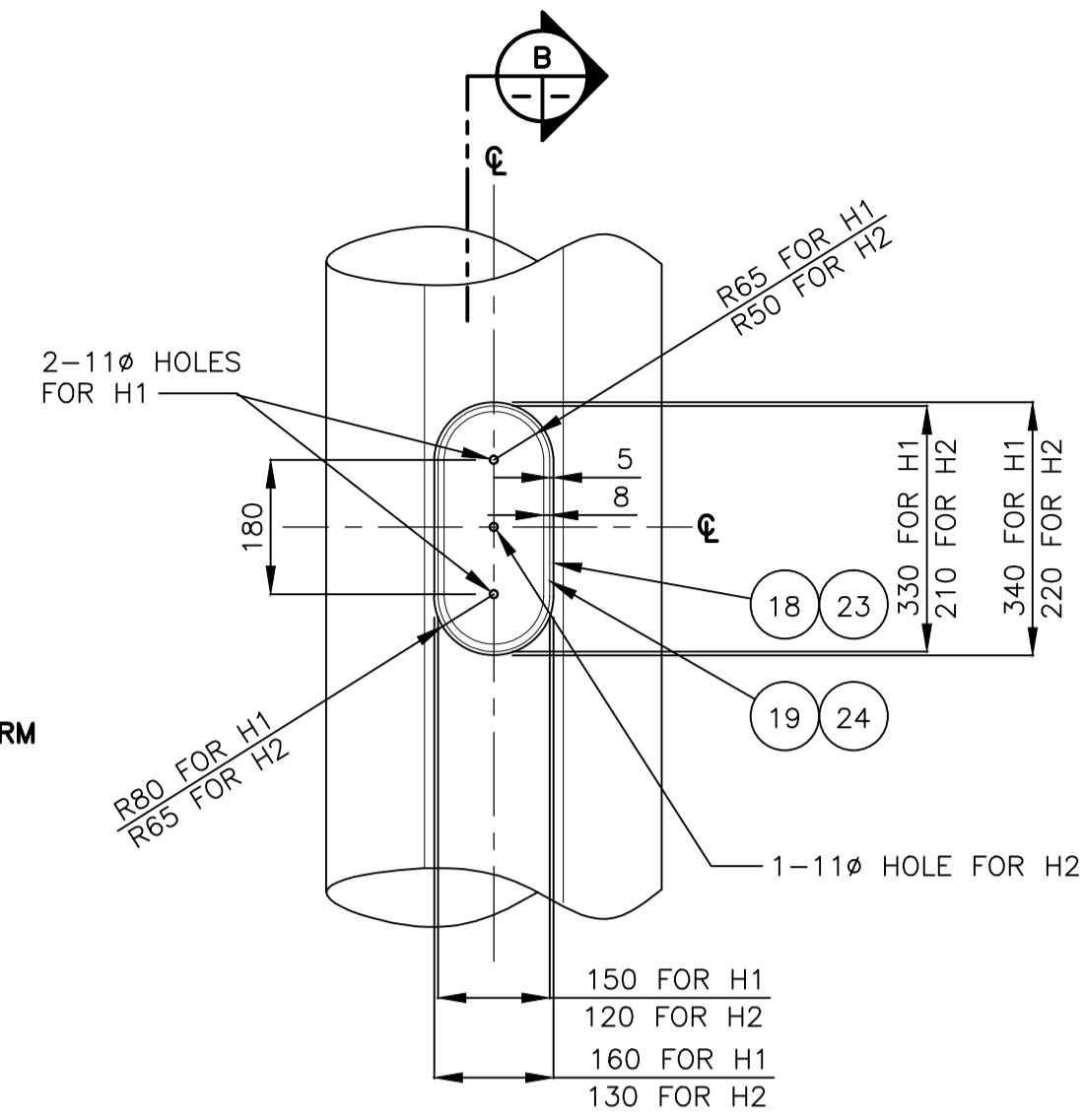
ELEVATION
1:60



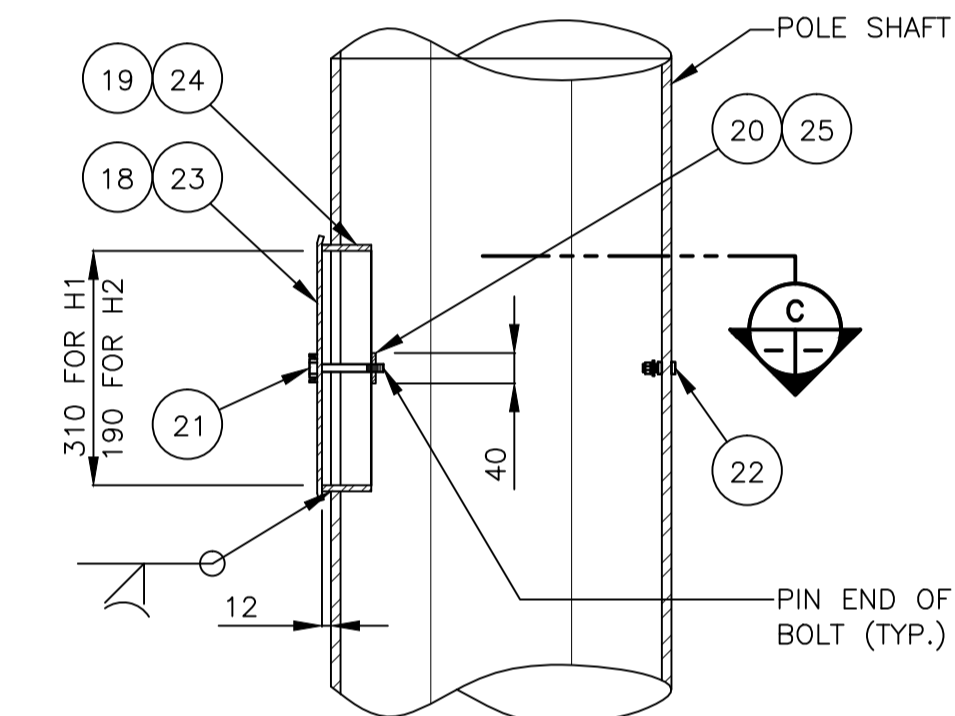
ORIENTATION
1:20



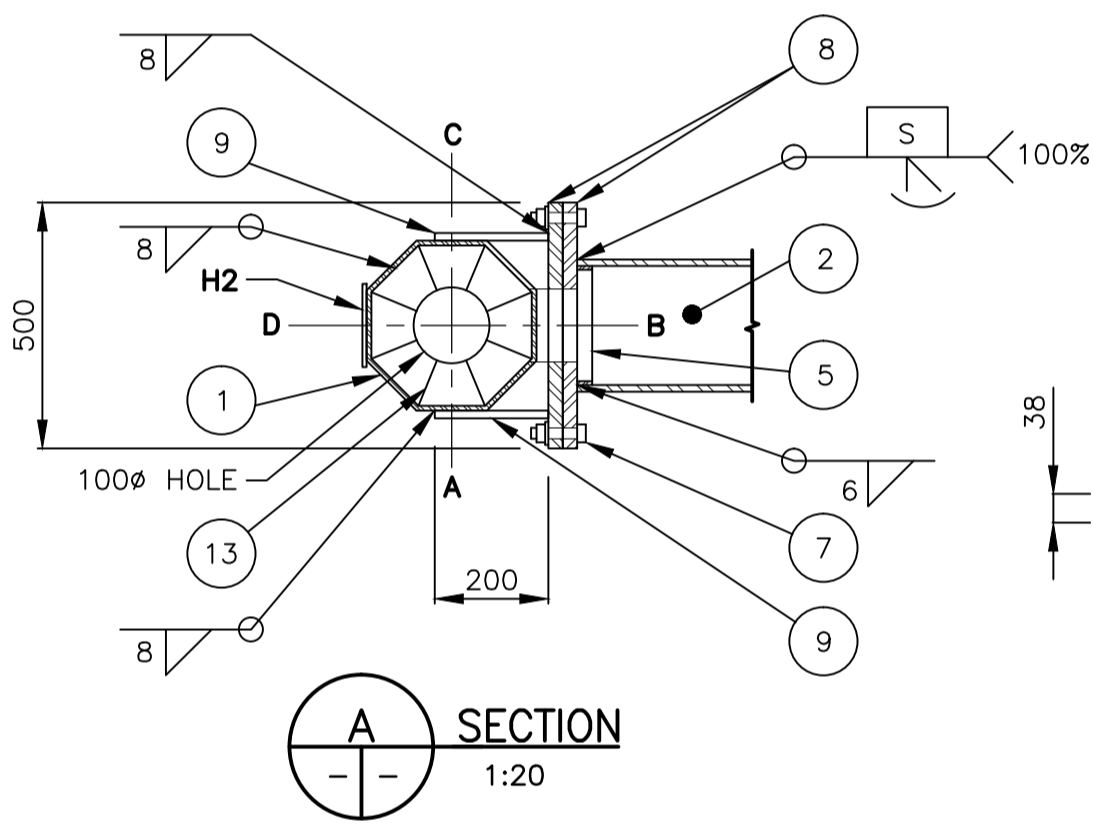
HANDHOLE ELEVATION



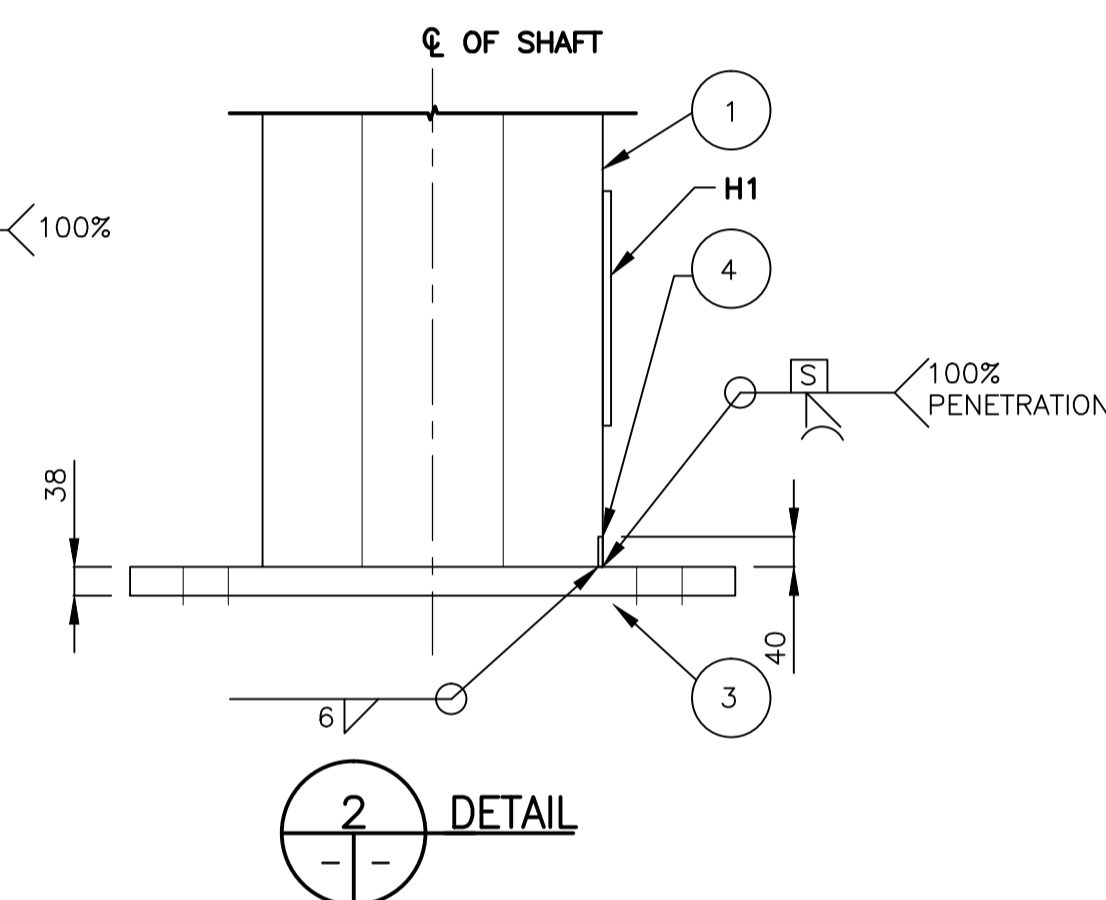
HANDHOLE SECTION MK. 'H1' & 'H2'



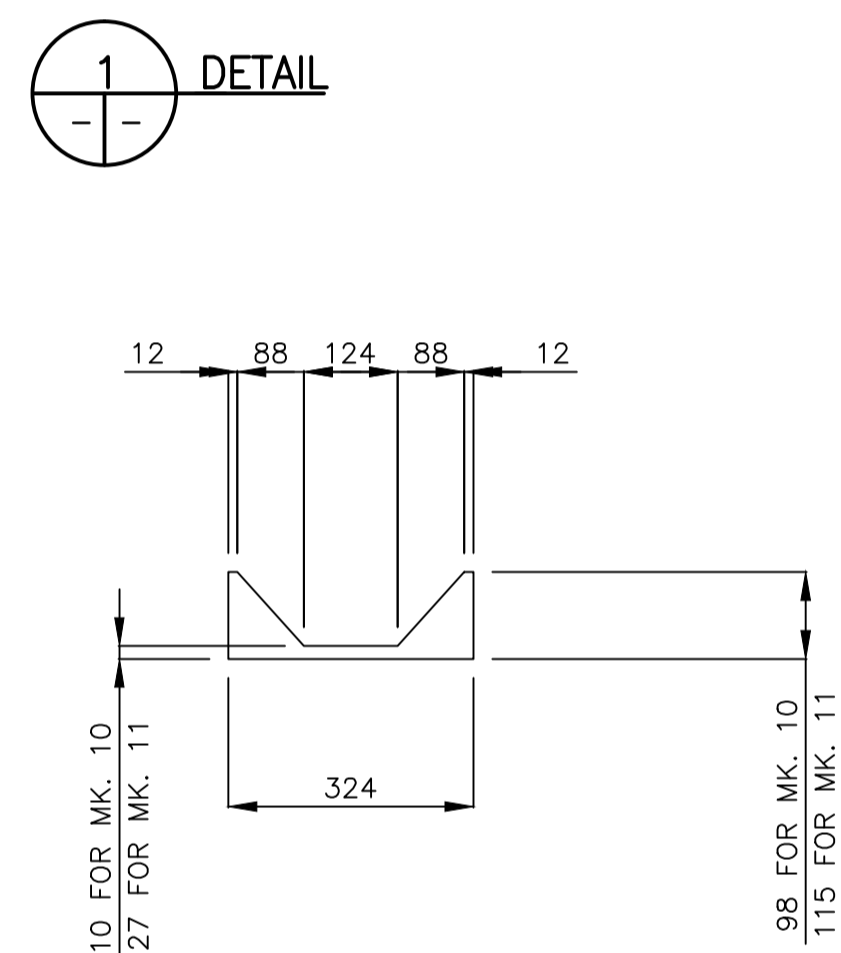
HANDHOLE SECTION MK. 'H1' & 'H2'



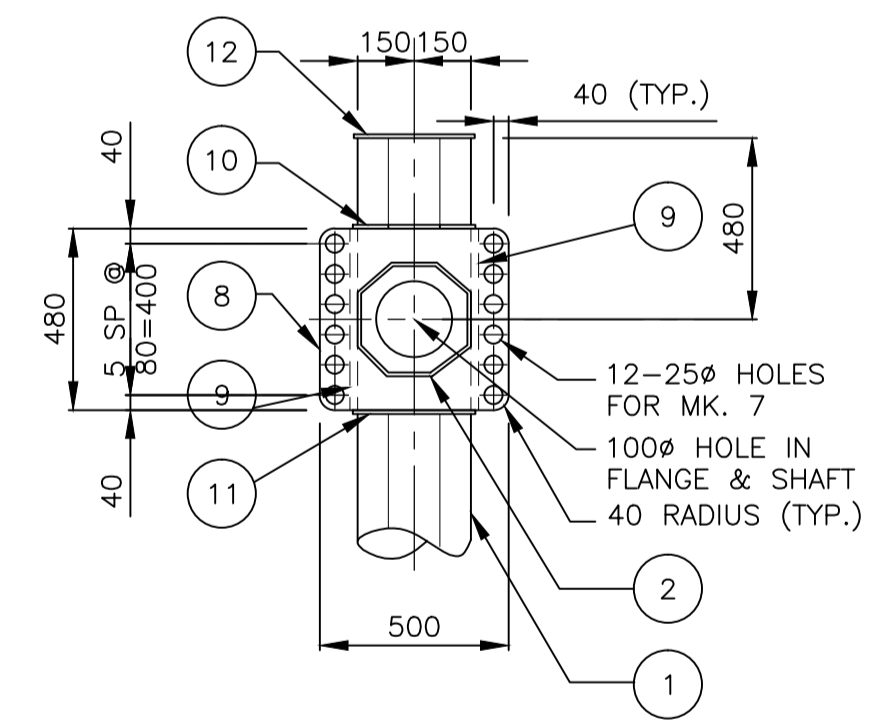
SECTION A
1:20



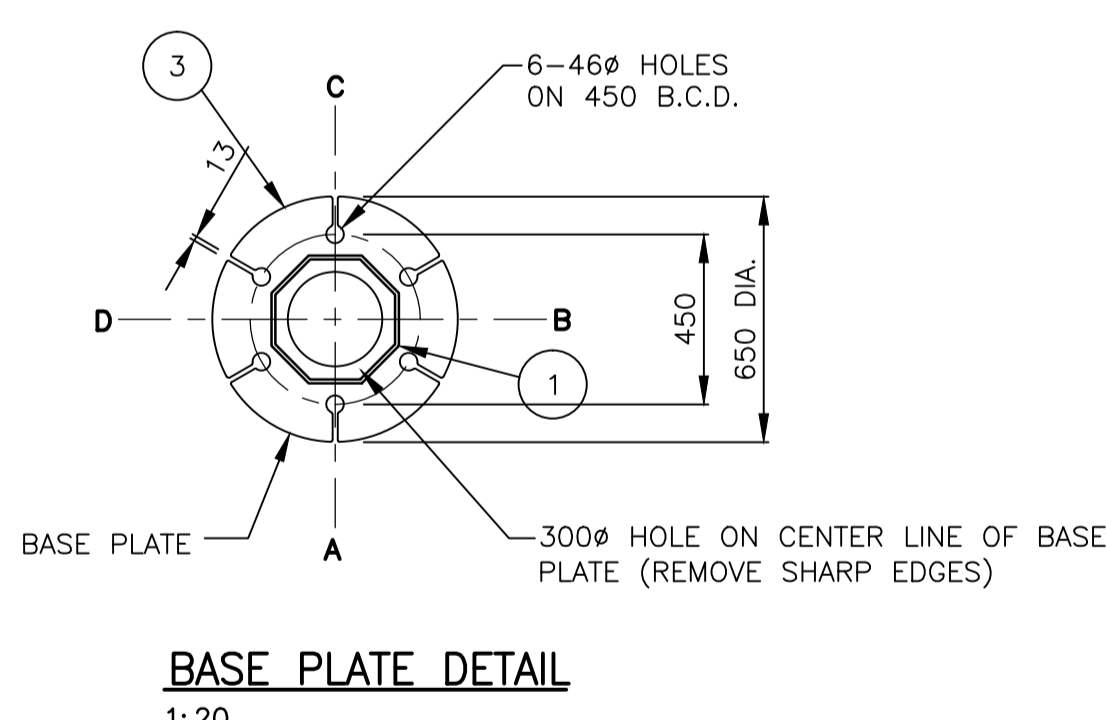
DETAIL 2



GUSSET PLATE MK. '10' & '11'

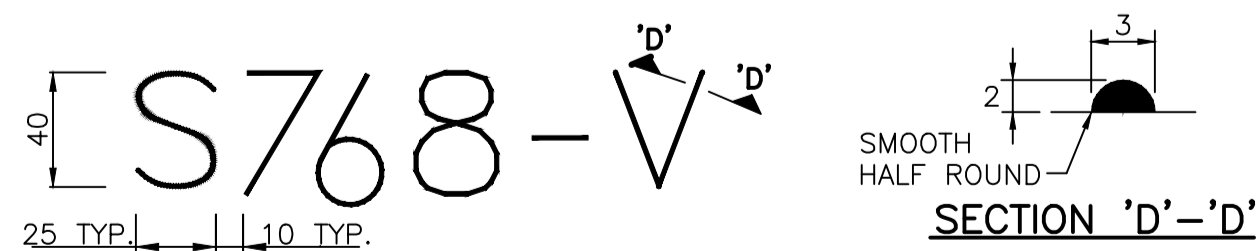


FLANGE PLATE DETAIL
1:20

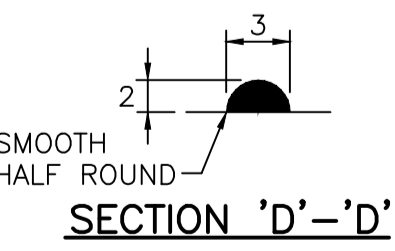


BASE PLATE DETAIL
1:20

- NOTES:**
- PROVIDE "RAISED" IDENTIFICATION NO. WITH WELDING ELECTRODE FOR THE SIGN STRUCTURE.
 - GRIND ALL SHARP POINTS AND EDGES.



TYPICAL STRUCTURE IDENTIFICATION NUMBER SIZE



SECTION 'D'-D'

BILL OF MATERIALS		
MK.	QTY.	DESCRIPTION
1	1	OCTAGONAL SHAFT 300 A/F x 4.763
2	1	OCTAGONAL ARM 300 A/F TO 130 A/F x 4.763
3	1	BASE PLATE 650 DIA. x 38 THICK (GR. 300W)
4	1	BACKUP STRIP 40 x 6 (FOR SHAFT)
5	1	BACKUP STRIP 40 x 6 (FOR ARM)
6	1	END PLATE 130 A/F OCTAGONAL 6 THICK
7	12	22 DIA.x100 LG. A325 BOLTS GALV. C/W NUT&WASHER
8	2	FLANGE PLATE 500 x 480 x 38 (GR. 300W)
9	2	SIDE GUSSET PLATE 20 x 480 x 200
10	1	TOP GUSSET PLATE 10 THICK
11	1	BOTTOM GUSSET PLATE 10 THICK
12	1	COVER PLATE 320 DIA x 10 THICK
13	2	OCTAGONAL INTERIOR GUSSET PLATE 8 THICK
HANDHOLE MARK H1 (1 REQ'D.)		
18	1	COVER PLATE 11 GA. x 160 x 340 (A569)
19	1	REINFORCING RING 8 x 65 x 830
HANDHOLE MARK H2 (1 REQ'D.)		
20	2	CLAMP BAR 6 x 40 x 180
21	2	9.5 DIA. x 140 BOLT S/S (TYPE 316)
22	1	GROUND STUD ASSEMBLY 10 DIA. x 40
HANDHOLE MARK H2 (1 REQ'D.)		
23	1	COVER PLATE 11 GA. x 130 x 220 (A569)
24	1	REINFORCING RING 8 x 65 x 555
25	1	CLAMP BAR 6 x 40 x 150
26	2	CLAMP BAR 10 x 76 (LENGTH TO SUIT)
27	1	BRACKET PL. 10 THICK
28	2	19 DIA. x 76 A325 BOLT (GALV.)
29	2	19 DIA. x 50 S/S BOLT (TYPE 316)

- * NOTES:**
- MARK NO. 29 C/W NUT AND LOCK WASHER.
 - MARK NO. 20 & 25 C/W DRILLED AND TAPPED AT THE CENTER OF PLATE FOR MK. 21
 - MARK NO. 21 C/W CUP WASHER.
 - MARK NO. 22 C/W 2-10mm HEX NUT, 2 TERMINAL WASHERS, & 1 LOCK WASHER.

- GENERAL NOTES**
- DESIGN DATA**
AASHTO STANDARD SPECIFICATIONS FOR STRUCTURAL SUPPORTS FOR HIGHWAY SIGNS, LUMINAIRES, AND TRAFFIC SIGNALS, 5TH EDITION, 2009.
DESIGN WIND LOAD = 1.5 kPa (32 PSF)
DESIGN ICE LOAD = 0.15 kPa (3 PSF)
 - ALL MATERIALS SHALL BE CSA G40.21 - 350W STRUCTURAL STEEL UNLESS OTHERWISE NOTED.
 - ALL MATERIALS EXCEPT STAINLESS STEEL AND ALUMINUM SHALL BE HOT-DIP GALVANIZED IN ACCORDANCE WITH ASTM A123 TO A MIN. NET RETENTION OF 610 g/m²
 - ALL AREAS OF DAMAGED GALVANIZING SHALL BE REPAIRED WITH SELF-FLUXING LOW TEMPERATURE, ZINC BASED ALLOY ROD OR SPRAY-ON COATING CALLED "ZINGA".
 - SIGNS**
TWO SIGN PANELS
SIZE 900 x 900 mm. SUPPLIED AND INSTALLED BY THE CITY OF WINNIPEG TRAFFIC SERVICES BRANCH.
 - ALL MATERIALS TO FIT AFTER GALVANIZING.

UNDERGROUND STRUCTURES	B.M. ELEV.	DESIGNED BY H.M.V.	DESIGN TEAM	ENGINEER	<p>THE CITY OF WINNIPEG PUBLIC WORKS DEPARTMENT</p>
SUPV. U/G STRUCTURES COMMITTEE DATE		DRAWN BY			
NOTE:		CHECKED BY K.S.A.			RELEASER FOR CONSTRUCTION
LOCATION OF UNDERGROUND STRUCTURES AS SHOWN ARE BASED ON THE BEST INFORMATION AVAILABLE. BUT NO GUARANTEE IS GIVEN THAT ALL EXISTING UTILITIES ARE SHOWN OR THAT THE GIVEN LOCATIONS ARE EXACT. CONFIRMATION OF EXISTENCE AND EXACT LOCATION OF ALL SERVICES MUST BE OBTAINED FROM THE INDIVIDUAL UTILITIES BEFORE PROCEEDING WITH CONSTRUCTION.		APPROVED BY K.S.A.	DATE	113705751	<p>WWARP PART 3 - CONTRACT 1 STA 2+922.4 TO STA 5+935</p> <p>S768 - FABRICATION DETAILS</p>
					<p>CITY DRAWING NUMBER S768-2013-02</p> <p>SHEET 54 OF 64</p> <p>CONSULTANT DRAWING NUMBER S-503</p>

