

WEST MULTI-USE PATH SOUTH OF WAVERLEY CONTROL LINE

| Station | Elevation (m) | Grade Out (%) |
|-----------|---------------|---------------|
| 6+000.000 | 232.600 | 0.00% |
| 6+300.000 | 232.600 | -0.20% |
| 6+350.000 | 232.500 | 0.00% |
| 6+380.000 | 232.500 | 0.20% |
| 6+430.000 | 232.600 | 0.00% |
| 6+540.200 | 232.600 | 0.32% |
| 6+600.000 | 232.790 | -0.16% |
| 6+640.000 | 232.726 | 0.70% |
| 6+660.000 | 232.866 | 0.83% |
| 6+712.500 | 233.300 | 0.00% |
| 6+733.204 | 233.300 | |

EAST MULTI-USE PATH SOUTH OF WAVERLEY CONTROL LINE

| Station | Elevation (m) | Grade Out (%) |
|-----------|---------------|---------------|
| 4+000.000 | 232.600 | 0.00% |
| 4+300.000 | 232.600 | -0.20% |
| 4+350.000 | 232.500 | 0.00% |
| 4+380.000 | 232.500 | 0.20% |
| 4+430.000 | 232.600 | 0.00% |
| 4+563.100 | 232.600 | 0.44% |
| 4+620.000 | 232.850 | -0.18% |
| 4+660.000 | 232.778 | 0.61% |
| 4+680.000 | 232.900 | 0.57% |
| 4+701.923 | 233.025 | 1.01% |
| 4+743.846 | 233.450 | |

MATCHLINE AT STA: 1+770

CATCH BASIN, CATCH PIT STRUCTURE AND LOCATION SCHEDULE

| ID | STA | O/S NB KENASTON CONTROL LINE | RIM ELEV | BTM ELEV | INV ELEV |
|-----|-------|------------------------------|----------|----------|----------|
| CP1 | 1+620 | 9.2 L | 232.530 | 231.620 | 231.680 |



METRIC
WHOLE NUMBERS INDICATE MILLIMETRES
DECIMALIZED NUMBERS INDICATE METRES

WARNING

- IF POWER EQUIPMENT OR EXPLOSIVES ARE TO BE USED FOR EXCAVATION ON THIS PROJECT THE CONTRACTOR MUST:
- NOTIFY THE GAS COMPANY OF THE PROPOSED LOCATION OF EXCAVATION.
 - TAKE PRECAUTION TO AVOID DAMAGE TO GAS COMPANY INSTALLATIONS SEE PROVINCIAL REGULATION 210/72 FOR DETAILS.
 - OBTAIN EXCAVATION PERMITS PRIOR TO CONSTRUCTION.

| 150 W.M. | WATERMAIN | 150 W.M. | MTS | M.T.S. | 150 mm W.M. | WATERMAIN | 150 mm W.M. |
|----------|---------------------|----------|----------|-------------|-------------|---------------------|----------------|
| | HYDRANT VALVE | | | | | HYDRANT VALVE | |
| | LAND DRAINAGE SEWER | | | | | LAND DRAINAGE SEWER | |
| | WASTE WATER SEWER | | | | | WASTE WATER SEWER | |
| | MANHOLE | | | | | MANHOLE | |
| | CATCH BASIN | | | | | CATCH BASIN | |
| | CURB INLET | | | | | CURB INLET | |
| | TEST HOLES | | | | | TEST HOLES | |
| | CULVERT | | | | | CULVERT | |
| | GAS | | | | | GAS | |
| | EXISTING | | EXISTING | LEGEND-PLAN | | EXISTING | LEGEND-PROFILE |

UNDERGROUND STRUCTURES

DATE: _____

NOTE:
LOCATION OF UNDERGROUND STRUCTURES AS SHOWN ARE BASED ON THE BEST INFORMATION AVAILABLE. BUT NO GUARANTEE IS GIVEN THAT ALL EXISTING UTILITIES ARE SHOWN OR THAT THE GIVEN LOCATIONS ARE EXACT. CONFIRMATION OF EXISTENCE AND EXACT LOCATION OF ALL SERVICES MUST BE OBTAINED FROM THE INDIVIDUAL UTILITIES BEFORE PROCEEDING WITH CONSTRUCTION.

| NO. | REVISIONS | DATE | BY |
|-----|-----------------------|----------|-----|
| 2 | ISSUED FOR ADDENDUM 1 | 13-04-23 | MRD |
| 1 | ISSUED FOR TENDER | 13-04-05 | MRD |
| 0 | ISSUED FOR 90% REVIEW | 13-02-22 | MRD |

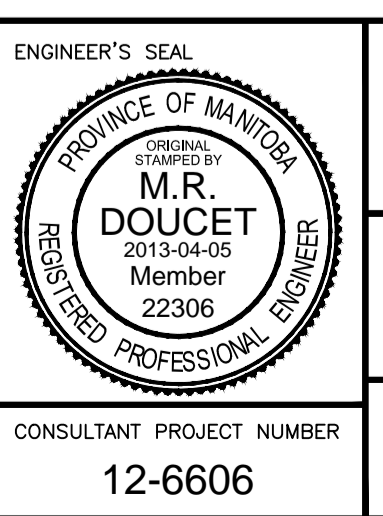
| DESIGNED BY | MRD |
|-------------|-----|
| DRAWN BY | PMW |
| CHECKED BY | DBW |
| APPROVED BY | DPK |

DESIGN TEAM

DILLON CONSULTING

RELEASSED FOR CONSTRUCTION

DATE: 2013-04-05



THE CITY OF WINNIPEG
PUBLIC WORKS DEPARTMENT

WWARP PART 3 - CONTRACT 3
STA: 1+450 TO STA: 2+922.4

PLAN PROFILE KENASTON
STA: 1+450 TO 1+770

CITY DRAWING NUMBER: P-3344-5
SHEET 5 OF 23
CONSULTANT DRAWING NUMBER

CONSULTANT PROJECT NUMBER: 12-6606

G:\CAD\126606\Contract\Contract_3\Current\Plan_Profile.dwg