

WEST MULTI-USE PATH SOUTH OF WAVERLEY CONTROL LINE

Station	Elevation (m)	Grade Out (%)
6+000.000	232.600	0.00%
6+300.000	232.600	-0.20%
6+350.000	232.500	0.00%
6+380.000	232.500	0.00%
6+430.000	232.600	0.20%
6+540.200	232.600	0.00%
6+600.000	232.790	0.32%
6+640.000	232.726	-0.16%
6+660.000	232.866	0.70%
6+712.500	233.300	0.83%
6+733.204	233.300	0.00%

EAST MULTI-USE PATH SOUTH OF WAVERLEY CONTROL LINE

Station	Elevation (m)	Grade Out (%)
4+000.000	232.600	0.00%
4+300.000	232.600	-0.20%
4+350.000	232.500	0.00%
4+380.000	232.500	0.00%
4+430.000	232.600	0.20%
4+563.100	232.600	0.00%
4+620.000	232.850	0.44%
4+660.000	232.778	-0.18%
4+680.000	232.900	0.61%
4+701.923	233.025	0.57%
4+743.846	233.450	1.01%

CATCH BASIN, CATCH PIT STRUCTURE AND LOCATION SCHEDULE

ID	STA	O/S NB KENASTON CONTROL LINE	RIM ELEV	BTM ELEV	INV ELEV
CP2	1+940	9.9 L	232.490	231.580	231.590
CB1	1+807	39.0 L	231.300	229.200	229.800
CB2	1+818	39.0 L	231.300	229.200	229.800
CB3	1+807	20.5 R	231.300	229.200	229.800
CB4	1+818	20.5 R	231.300	229.200	229.800
CB5	1+818	9.3 L	232.139	230.039	230.639
MH1	1+816	48.0 L	232.450	-	-
MH2	1+816	29.6 L	232.450	-	-

DITCH CB - SD-025
MH - SD-011



METRIC
WHOLE NUMBERS INDICATE MILLIMETRES
DECIMALIZED NUMBERS INDICATE METRES

WARNING

- IF POWER EQUIPMENT OR EXPLOSIVES ARE TO BE USED FOR EXCAVATION ON THIS PROJECT THE CONTRACTOR MUST:
1. NOTIFY THE GAS COMPANY OF THE PROPOSED LOCATION OF EXCAVATION.
 2. TAKE PRECAUTION TO AVOID DAMAGE TO GAS COMPANY INSTALLATIONS SEE PROVINCIAL REGULATION 210/72 FOR DETAILS.
 3. OBTAIN EXCAVATION PERMITS PRIOR TO CONSTRUCTION.

150 WM	WATERMAIN	150 WM	MTS	M.T.S.	MTS	150 mm W.M.	WATERMAIN	150 mm W.M.
	HYDRANT VALVE			CONCRETE			HYDRANT VALVE	
	LAND DRAINAGE SEWER			ASPHALT			WASTE WATER SEWER	
	WASTE WATER SEWER			PAVING STONES			WASTE WATER SEWER	
	MANHOLE			PROPERTY LINE			NORTH/WEST GUTTER	
	CATCH BASIN			SURVEY BAR			SOUTH/EAST GUTTER	
	CURB INLET			CURB RAMP			NORTH/WEST T/LANE	
	TEST HOLES			DITCH			SOUTH/EAST T/LANE	
	CULVERT			SWALE				
	GAS							
	EXISTING		PROPOSED	EXISTING			LEGEND-PROFILE	
	LEGEND-PLAN		PROPOSED	EXISTING			LEGEND-PROFILE	

UNDERGROUND STRUCTURES

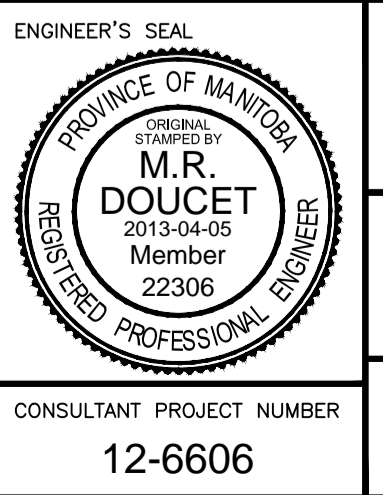
SUPP. U/G STRUCTURES COMMITTEE	DATE

NOTE:
LOCATION OF UNDERGROUND STRUCTURES AS SHOWN ARE BASED ON THE BEST INFORMATION AVAILABLE. BUT NO GUARANTEE IS GIVEN THAT ALL EXISTING UTILITIES ARE SHOWN OR THAT THE GIVEN LOCATIONS ARE EXACT. CONFIRMATION OF EXISTENCE AND EXACT LOCATION OF ALL SERVICES MUST BE OBTAINED FROM THE INDIVIDUAL UTILITIES BEFORE PROCEEDING WITH CONSTRUCTION.

B.M. 654008 N: 5515764.610 E: 633359.697
ELEV. 232.463 m

NO.	REVISIONS	DATE	BY
2	ISSUED FOR ADDENDUM 1	13-04-23	MRD
1	ISSUED FOR TENDER	13-04-05	MRD
0	ISSUED FOR 90% REVIEW	13-02-22	MRD

DESIGNED BY	MRD
DRAWN BY	PMW
CHECKED BY	DBW
APPROVED BY	DPK
HOR. SCALE	1:500
VERTICAL	1:20
RELEASED FOR CONSTRUCTION	
DATE	2013-04-05



THE CITY OF WINNIPEG
PUBLIC WORKS DEPARTMENT

WWARP PART 3 - CONTRACT 3
STA: 1+450 TO STA: 2+922.4

PLAN PROFILE KENASTON
STA: 1+770 TO 2+100

CITY DRAWING NUMBER: P-3344-6-R1
SHEET 6 OF 23
CONSULTANT DRAWING NUMBER

CONSULTANT PROJECT NUMBER: 12-6606

G:\CAD\126606\Contract\Contract_3\Current\Plan_Profile.dwg