

WEST MULTI-USE PATH NORTH OF WAVERLEY CONTROL LINE		
Station	Elevation (m)	Grade Out (%)
6+800.000	233.700	0.00%
6+828.000	233.700	0.00%
6+880.008	233.065	-1.22%
6+926.015	233.104	0.09%
7+005.685	232.990	-0.14%
7+405.755	233.665	0.17%
7+498.060	234.000	0.36%

EAST MULTI-USE PATH NORTH OF WAVERLEY CONTROL LINE		
Station	Elevation (m)	Grade Out (%)
4+810.000	233.300	0.00%
4+836.000	233.300	0.00%
4+884.000	233.075	-0.47%
4+930.000	233.190	0.25%
4+985.397	232.989	-0.36%
4+995.000	232.990	0.00%
5+395.000	233.665	0.17%
5+488.672	234.000	0.36%

CATCH BASIN, CATCH PIT STRUCTURE AND LOCATION SCHEDULE					
ID	STA	O/S NB KENASTON CONTROL LINE	RIM ELEV	BTM ELEV	INV ELEV
CP5	2+714	8.5 L	233.550	232.640	232.750



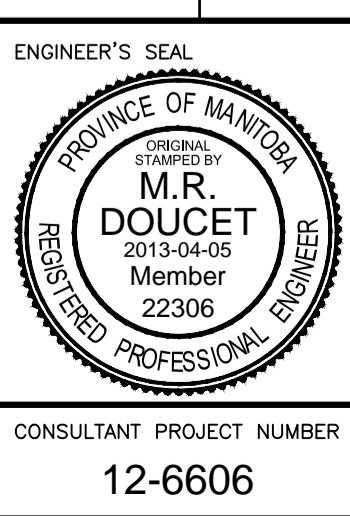
METRIC
WHOLE NUMBERS INDICATE MILLIMETRES
DECIMALIZED NUMBERS INDICATE METRES

WARNING
IF POWER EQUIPMENT OR EXPLOSIVES ARE TO BE USED FOR EXCAVATION ON THIS PROJECT THE CONTRACTOR MUST:

- NOTIFY THE GAS COMPANY OF THE PROPOSED LOCATION OF EXCAVATION.
- TAKE PRECAUTION TO AVOID DAMAGE TO GAS COMPANY INSTALLATIONS SEE PROVINCIAL REGULATION 210/72 FOR DETAILS.
- OBTAIN EXCAVATION PERMITS PRIOR TO CONSTRUCTION.

150 W.M.	WATERMAIN	150 W.M.	MTS	CONCRETE	MTS	150 mm W.M.	WATERMAIN	150 mm W.M.
	HYDRANT VALVE		CONCRETE		ASPHALT		HYDRANT VALVE	
	LAND DRAINAGE SEWER		PLANING		SIDEWALK		LAND DRAINAGE SEWER	
	WASTE WATER SEWER		PAVING STONES		PROPERTY LINE		WASTE WATER SEWER	
	MANHOLE		SURVEY BAR		CURB RAMP		NORTH/WEST GUTTER	
	CATCH BASIN		DITCH		SWALE		SOUTH/EAST GUTTER	
	CURB INLET		CULVERT		EXISTING		NORTH/WEST T/LANE	
	TEST HOLES		GAS		EXISTING		SOUTH/EAST T/LANE	
	GAS		EXISTING		PROPOSED		EXISTING	
	EXISTING		PROPOSED		EXISTING		PROPOSED	

UNDERGROUND STRUCTURES		B.M. 654008 N: 5515764.610 E: 633359.697 ELEV. 232.463 m	
DESIGNED BY	MRD	ISSUED FOR ADDENDUM 1	13-04-23 MRD
DRAWN BY	PMW	ISSUED FOR TENDER	13-04-05 MRD
CHECKED BY	DBW	ISSUED FOR 90% REVIEW	13-02-22 MRD
APPROVED BY	DPK	NO.	REVISIONS
DESIGN TEAM		DATE	BY
		DATE	2013-04-05



THE CITY OF WINNIPEG PUBLIC WORKS DEPARTMENT

WWARP PART 3 - CONTRACT 3
STA: 1+450 TO STA: 2+922.4

PLAN PROFILE KENASTON
STA: 2+690 TO 2+922.4

CITY DRAWING NUMBER: P-3344-9
SHEET: 9 OF 23
CONSULTANT DRAWING NUMBER

CONSULTANT PROJECT NUMBER: 12-6606

G:\CAD\126606\Contract\Contract_3\Current\Plan_Profile.dwg