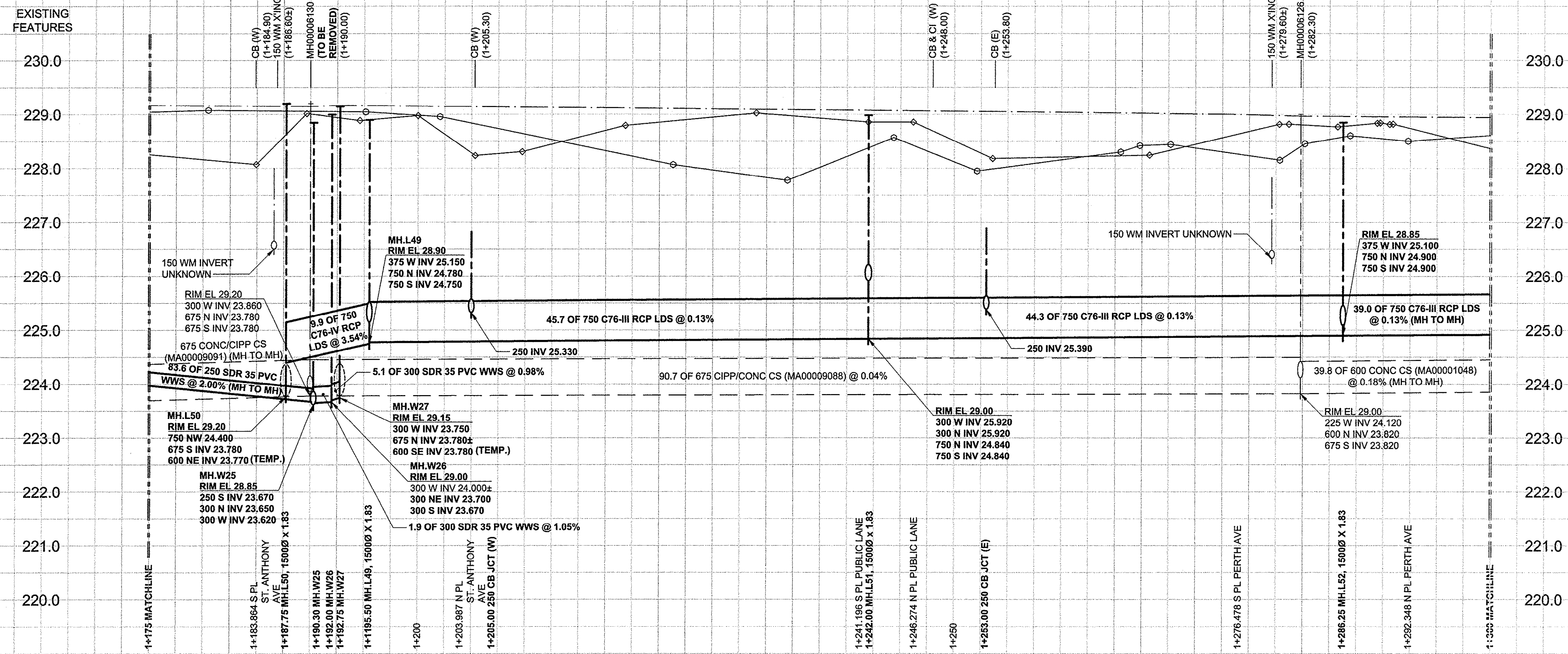


D SIZE 22" x 34" (558mm x 864mm) PLOT: 3/25/2013 2:18:45 PM AECOM FILE NAME: P:\60219315\0003\CADD\040 CAD\DWG\10505-SHT-00-CON3-C-0006_C-0009.dwg Saved By: helppia



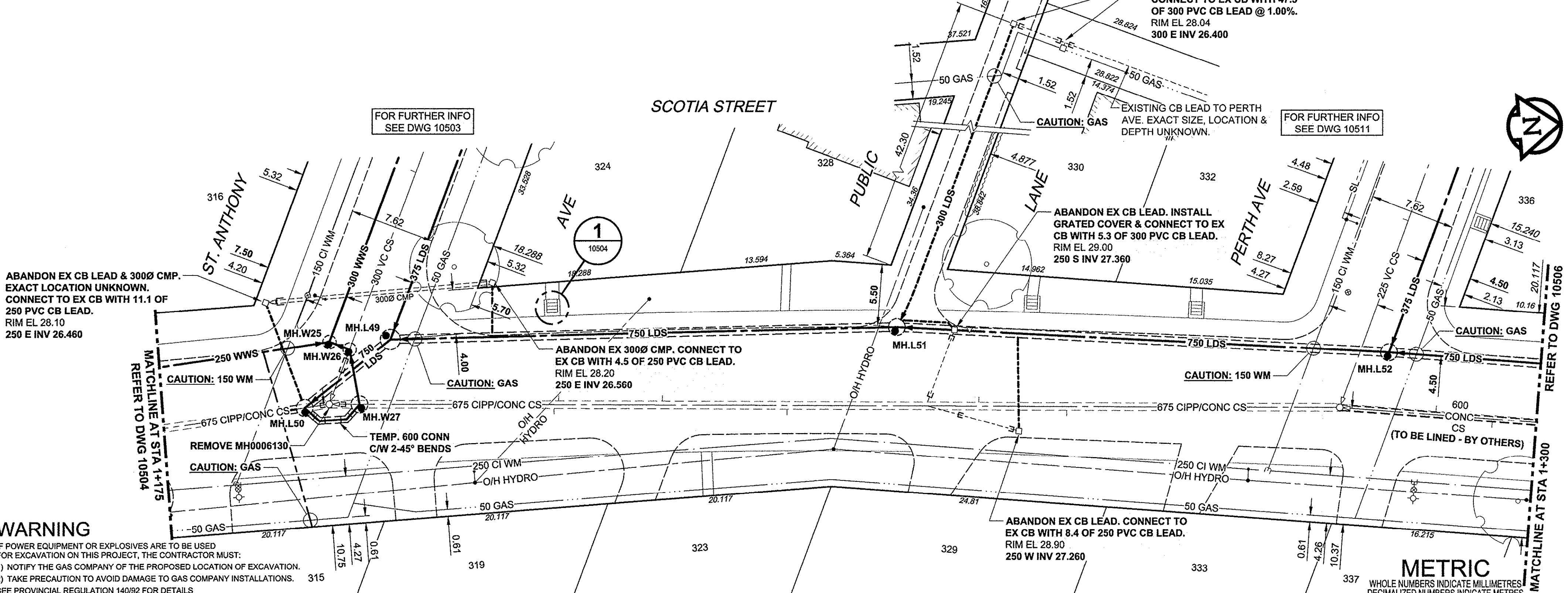
SEWER SERVICE INFORMATION

ADDRESS	PL TIE (SHORT/LONG)	JUNCTION TIE	REMARKS
* 315 SCOTIA		1.0m S OF MH @ ST ANTHONY	
316 SCOTIA		22.3m W OF MANHOLE @ SCOTIA ST	SERVICE OFF ST ANTHONY
319 SCOTIA		69m S OF MH @ PERTH	
323 SCOTIA			NO INFO
324 SCOTIA		69.0m S OF MH @ PERTH	
328 SCOTIA		59.8m S OF MH @ PERTH	
329 SCOTIA		48.6m S OF MH @ PERTH	
330 SCOTIA		31.3 9m S OF MH @ PERTH	
332 SCOTIA			SERVICED FROM PERTH
333 SCOTIA		23.1m S OF MH @ PERTH	
336 SCOTIA			NO INFO
337 SCOTIA			NO INFO

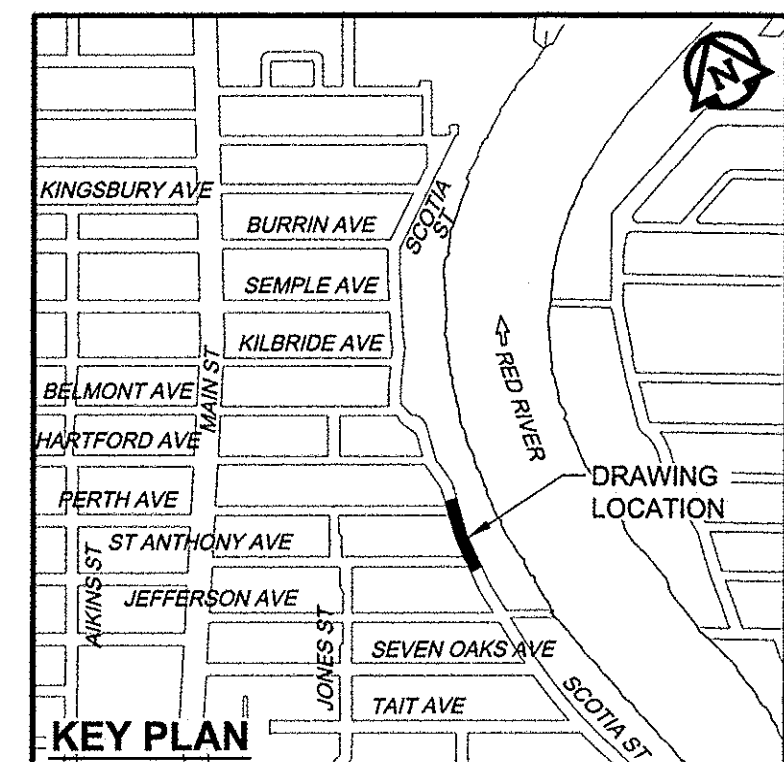
WATER SERVICE INFORMATION

ADDRESS	DISTANCE PROPERTY	SIZE (mm) & TYPE	SHORT & LONG MEASUREMENT	CORPORATION LOCATION	REMARKS
316 SCOTIA	10.50	20 COPPER	5.1m SNL HSE 6.4m N HYD ST ANTHONY		0.4m W S/C
316 SCOTIA	0.15	20 COPPER	3.8m EWL HSE 16.7m WWL SCOTIA		0.3m W S/C
319 SCOTIA	0.30	20 COPPER	6.7m SNL HSE 24.6m N HYD ST ANTHONY		1.7m S S/C
323 SCOTIA	8.90	16 LEAD	4.1m NSL HSE 48.9m N HYD ST ANTHONY		OPP S/C
324 SCOTIA	PROPERTY	20 COPPER	4m SNL HSE 11.2m NNL ST ANTHONY		52m S S/C
328 SCOTIA		20 COPPER	0.6m NSL HSE		0.3m S S/C
328 SCOTIA			1.5m SNL HSE		
330 SCOTIA		20 LEAD	2.8m NSL HSE 24.5m SSL PERTH		OPP S/C
332 SCOTIA					NO INFO
333 SCOTIA					NO INFO
336 SCOTIA					NO INFO
337 SCOTIA			0.30m NNL HSE		

CHAINAGE ALONG E PL



- CONSTRUCTION NOTES:**
- FOR DETAILED TEST HOLE INFORMATION, SEE SPECIFICATION.
 - LOCATION OF SERVICES SHOWN ON DRAWINGS ARE APPROXIMATE.
 - CONFIRM LOCATION OF ALL WATER & WASTEWATER SERVICES IN THE FIELD.
 - INSTALL NEW SEWERS, CATCHBASIN LEADS AND WATERMANS BY TRENCHLESS METHODS.
 - ALL SHAFTS SHALL HAVE CLASS 3 BACKFILL.
 - RENEW SEWER SERVICES TO PROPERTY LINE AND PLUG EXISTING SERVICE AS PER SD-021 (JEFFERSON TO ST. ANTHONY)
 - PAVEMENT RESTORATION FOR 600 & 750 LDS INSTALLATION ON SCOTIA STREET FROM MH.L49 TO MH.L56 SHALL BE INCIDENTAL TO PIPE INSTALLATION EXCEPT ASPHALTIC CONCRETE PLANING AND OVERLAY.



WARNING
IF POWER EQUIPMENT OR EXPLOSIVES ARE TO BE USED FOR EXCAVATION ON THIS PROJECT, THE CONTRACTOR MUST:
1) NOTIFY THE GAS COMPANY OF THE PROPOSED LOCATION OF EXCAVATION.
2) TAKE PRECAUTION TO AVOID DAMAGE TO GAS COMPANY INSTALLATIONS.
SEE PROVINCIAL REGULATION 140/92 FOR DETAILS

SYMBOL	DESCRIPTION	SYMBOL	DESCRIPTION	SYMBOL	DESCRIPTION
150 WM	WATERMAIN	150 WM	WATERMAIN	150 WM	WATERMAIN
Hydrant	HYDRANT	Hydrant	HYDRANT	Hydrant	HYDRANT
Valve	VALVE	Valve	VALVE	Valve	VALVE
300 LDS	LAND DRAINAGE SEWER	300 LDS	LAND DRAINAGE SEWER	300 LDS	LAND DRAINAGE SEWER
250 WWS	WASTE WATER SEWER	250 WWS	WASTE WATER SEWER	250 WWS	WASTE WATER SEWER
Manhole	MANHOLE	Manhole	MANHOLE	Manhole	MANHOLE
Catch Basin	CATCH BASIN	Catch Basin	CATCH BASIN	Catch Basin	CATCH BASIN
Curb Inlet	CURB INLET	Curb Inlet	CURB INLET	Curb Inlet	CURB INLET
Culvert	CULVERT	Culvert	CULVERT	Culvert	CULVERT
Pipe Abandonments	PIPE ABANDONMENTS	Pipe Abandonments	PIPE ABANDONMENTS	Pipe Abandonments	PIPE ABANDONMENTS
Survey Bar	SURVEY BAR	Survey Bar	SURVEY BAR	Survey Bar	SURVEY BAR
Existing	LEGEND - PLAN	New	LEGEND - PLAN	Existing	LEGEND - PROFILE
Curb Stop	CURB STOP	Reducer	REDUCER	Coupling	COUPLING
Reducer	REDUCER	Coupling	COUPLING	Anode	ANODE
Coupling	COUPLING	Anode	ANODE	Hydro	HYDRO
Anode	ANODE	Hydro	HYDRO	MTS	MTS
Hydro	HYDRO	MTS	MTS	Gas	GAS
MTS	MTS	Gas	GAS	Testhole	TESTHOLE
Gas	GAS	Testhole	TESTHOLE	Lamp Standard	LAMP STANDARD
Testhole	TESTHOLE	Lamp Standard	LAMP STANDARD	Tree	TREE
Lamp Standard	LAMP STANDARD	Tree	TREE	Paving Stone	PAVING STONE
Tree	TREE	Paving Stone	PAVING STONE		
Paving Stone	PAVING STONE				

LOCATION APPROVED
UNDERGROUND STRUCTURES

DATE: _____

NOTE: LOCATION OF UNDERGROUND STRUCTURES AS SHOWN ARE BASED ON THE BEST INFORMATION AVAILABLE. BUT NO GUARANTEE IS GIVEN THAT ALL EXISTING UTILITIES ARE SHOWN OR THAT THE GIVEN LOCATIONS ARE EXACT. CONFIRMATION OF EXISTENCE AND EXACT LOCATION OF ALL SERVICES MUST BE OBTAINED FROM THE INDIVIDUAL UTILITIES BEFORE PROCEEDING WITH CONSTRUCTION.

NO.	ISSUED FOR CONSTRUCTION	DATE	BY
0	ISSUED FOR CONSTRUCTION	13/03/26	ADL
	REVISIONS	YYMMDD	

AECOM

DESIGNED BY: FMI
DRAWN BY: ADL
HOR. SCALE: 1:250
VERT. SCALE: 1:50

CHECKED BY: EDT
APPROVED BY: [Signature]
RELEASED FOR CONSTRUCTION: [Signature]
DATE: March 26/13

APEGM
Certificate of Authorization
AECOM Canada Ltd.
No. 4671 Date: March 26/2013

PROFESSIONAL'S SEAL
E.D.J. TOUPIN
Member
23484
26/03/2013
CONSULTANT DRAWING NO.
60219315-SHT-00-CON3-C-0006_C-0009

THE CITY OF WINNIPEG
WATER AND WASTE DEPARTMENT

JEFFERSON EAST
COMBINED SEWER RELIEF
CONTRACT 3
SCOTIA STREET

85m NORTH OF JEFFERSON AVENUE TO
70m SOUTH OF HARTFORD AVENUE

SHEET 07 OF 13
CITY DRAWING NUMBER
10505
REV 0

BID OPPORTUNITY NO. 235-2013