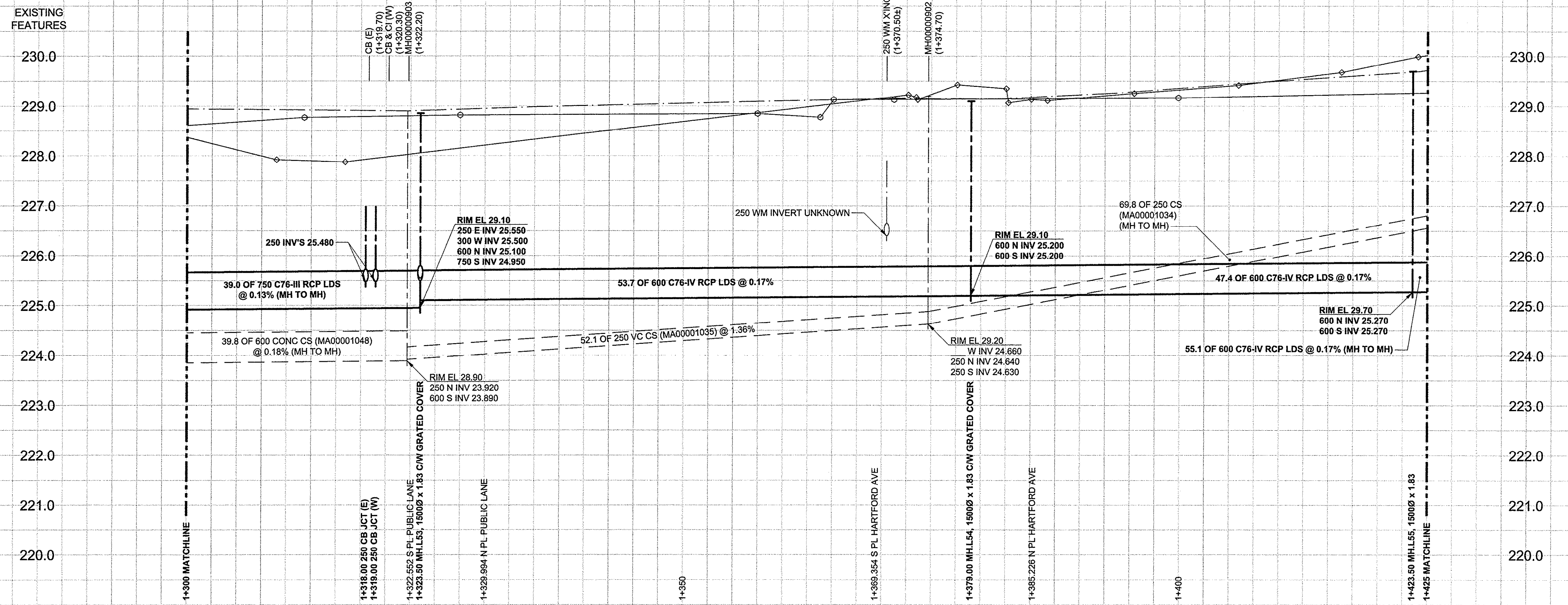
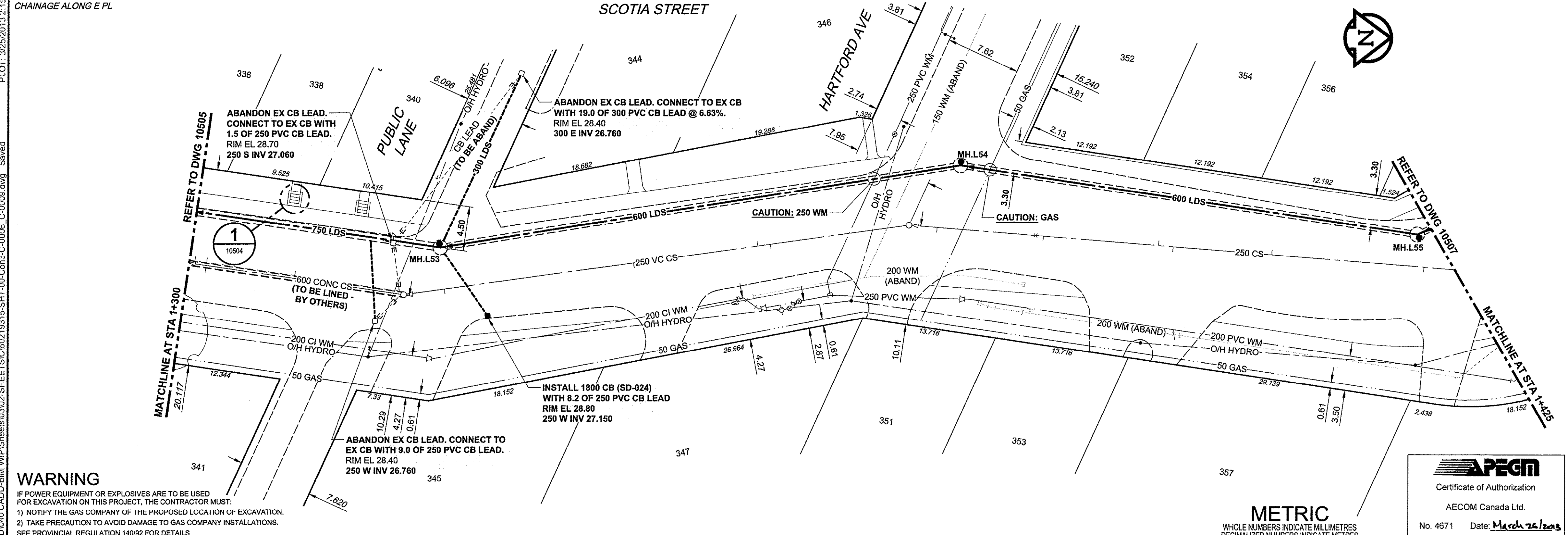


D SIZE 22" x 34" (559mm x 864mm)
 PLOT: 3/25/2013 2:19:23 PM
 AECOM FILE NAME: P:\02193151000-CADD\040-CADD\040-SHEETS\0219315-SHT-00-CON3-C-0006-C-0009.dwg Saved

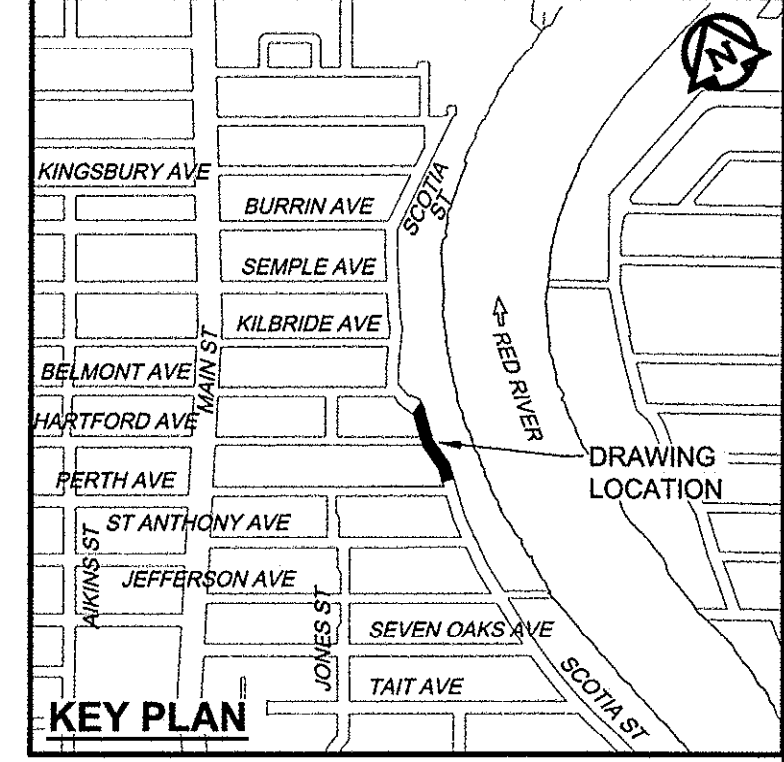


SEWER SERVICE INFORMATION			
ADDRESS	PL TIE (SHORT/LONG)	JUNCTION TIE	REMARKS
336 SCOTIA			NO INFO
338 SCOTIA			NO INFO
340 SCOTIA			NO INFO
341 SCOTIA			NO INFO
344 SCOTIA			NO INFO
345 SCOTIA			NO INFO
346 SCOTIA			NO INFO
347 SCOTIA			NO INFO
351 SCOTIA			NO INFO
352 SCOTIA			NO INFO
353 SCOTIA			NO INFO
354 SCOTIA			NO INFO
356 SCOTIA			NO INFO
357 SCOTIA			NO INFO
359 SCOTIA			NO INFO

WATER SERVICE INFORMATION					
ADDRESS	DISTANCE PROPERTY	SIZE (mm) & TYPE	SHORT & LONG MEASUREMENT	CORPORATION LOCATION	REMARKS
336 SCOTIA					NO INFO
338 SCOTIA					NO INFO
340 SCOTIA	18 LEAD	0.0m SSL HSE	22.3m>NNL PERTH		
341 SCOTIA		0.3m NSL LOT			
344 SCOTIA					NO INFO
345 SCOTIA					NO INFO
346 SCOTIA		12.3m NSL LOT	18.3m>NNL HARTFORD	7.0m S SIC	
347 SCOTIA					NO INFO
351 SCOTIA					NO INFO
352 SCOTIA	PROPERTY	1.2m NSL HSE	4.8m>NNL HARTFORD	1.5m S SIC	
353 SCOTIA					NO INFO
354 SCOTIA		5.7m N/S BLDG	7.0m>NNL LOT	4.8m N SIC	
356 SCOTIA	16 COPPER	3.6m NSL HSE	29.1m>NNL HARTFORD		
357 SCOTIA	20 COPPER	12.8m SSL HSE	24.5m>NNL HARTFORD		OPP SIC
359 SCOTIA	20 LEAD	2.7m SSL HSE			



- CONSTRUCTION NOTES:**
- FOR DETAILED TEST HOLE INFORMATION, SEE SPECIFICATION.
 - LOCATION OF SERVICES SHOWN ON DRAWINGS ARE APPROXIMATE.
 - CONFIRM LOCATION OF ALL WATER & WASTEWATER SERVICES IN THE FIELD.
 - INSTALL NEW SEWERS, CATCHBASIN LEADS AND WATERMANS BY TRENCHLESS METHODS.
 - ALL SHAFTS SHALL HAVE CLASS 3 BACKFILL.
 - PAVEMENT RESTORATION FOR 600 & 750 LDS INSTALLATION ON SCOTIA STREET FROM MH.L49 TO MH.L56 SHALL BE INCIDENTAL TO PIPE INSTALLATION EXCEPT ASPHALTIC CONCRETE PLANING AND OVERLAY.



WARNING
 IF POWER EQUIPMENT OR EXPLOSIVES ARE TO BE USED FOR EXCAVATION ON THIS PROJECT, THE CONTRACTOR MUST:
 1) NOTIFY THE GAS COMPANY OF THE PROPOSED LOCATION OF EXCAVATION.
 2) TAKE PRECAUTION TO AVOID DAMAGE TO GAS COMPANY INSTALLATIONS. SEE PROVINCIAL REGULATION 140/92 FOR DETAILS.

APEGM
 Certificate of Authorization
 AECOM Canada Ltd.
 No. 4671 Date: March 26, 2013

150 WM	WATERMAIN	150 WM	CURB STOP	150 WM	WATERMAIN	150 WM
○	HYDRANT	○	REDUCER	○	HYDRANT	○
⊕	VALVE	⊕	COUPLING	⊕	VALVE	⊕
○	LAND DRAINAGE SEWER	○	ANODE	○	LAND DRAINAGE SEWER	○
○	WASTE WATER SEWER	○	HYDRO	○	WASTE WATER SEWER	○
○	MANHOLE	○	MTS	○	MANHOLE	○
○	CATCH BASIN	○	GAS	○	CATCH BASIN	○
○	CURB INLET	○	TESTHOLE	○	CURB INLET	○
○	CULVERT	○	LAMP STANDARD	○	CULVERT	○
○	PIPE ABANDONMENTS	○	TREE	○	PIPE ABANDONMENTS	○
○	SURVEY BAR	○	PAVING STONE	○	SURVEY BAR	○
○	EXISTING	○	LEGEND - PLAN	○	EXISTING	○
○	NEW	○	LEGEND - PROFILE	○	NEW	○

LOCATION APPROVED
 UNDERGROUND STRUCTURES
 SUPR. U/G STRUCTURES DATE COMMITTEE
 NOTE: LOCATION OF UNDERGROUND STRUCTURES AS SHOWN ARE BASED ON THE BEST INFORMATION AVAILABLE. BUT NO GUARANTEE IS GIVEN THAT ALL EXISTING UTILITIES ARE SHOWN OR THAT THE GIVEN LOCATIONS ARE EXACT. CONFIRMATION OF EXISTENCE AND EXACT LOCATION OF ALL SERVICES MUST BE OBTAINED FROM THE INDIVIDUAL UTILITIES BEFORE PROCEEDING WITH CONSTRUCTION.

NO.	REVISIONS	DATE	BY
0	ISSUED FOR CONSTRUCTION	13/03/26	ADL

AECOM
 DESIGNED BY: FMI
 CHECKED BY: EDT
 DRAWN BY: ADL
 APPROVED BY: [Signature]
 HOR. SCALE: 1:250
 VERT. SCALE: 1:50
 DATE: March 26, 13

PROFESSIONAL'S SEAL
E.D.J. TOUPIN
 Member
 23484
 26/03/2013
 REGISTERED PROFESSIONAL ENGINEER
 CONSULTANT DRAWING NO.
 60219315-SHT-00-CON3-C-0006-C-0009

THE CITY OF WINNIPEG
 WATER AND WASTE DEPARTMENT
JEFFERSON EAST
 COMBINED SEWER RELIEF
 CONTRACT 3
 SCOTIA STREET
 8m NORTH OF PERTH AVENUE TO
 40m SOUTH OF BELMONT AVENUE

SHEET 08 OF 13
 CITY DRAWING NUMBER
10506
 REV 0

BID OPPORTUNITY NO. 235-2013