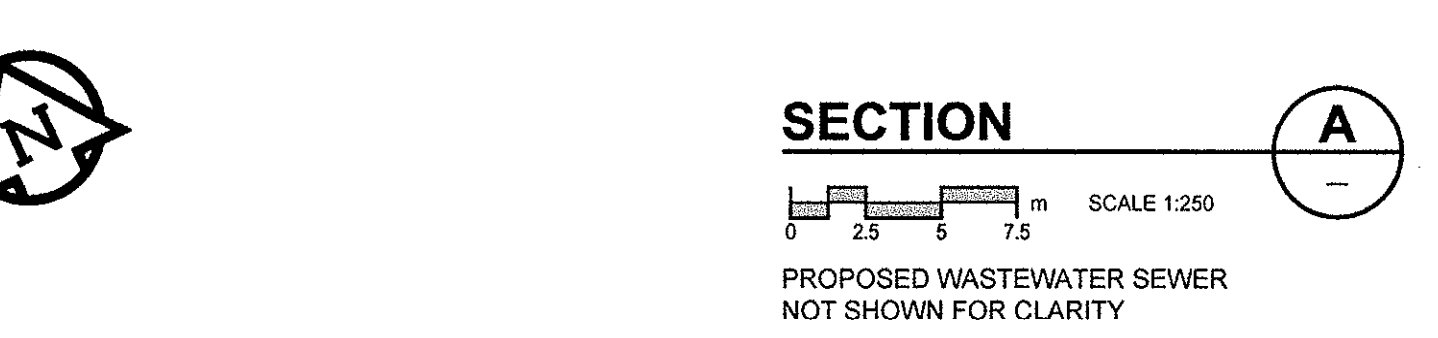
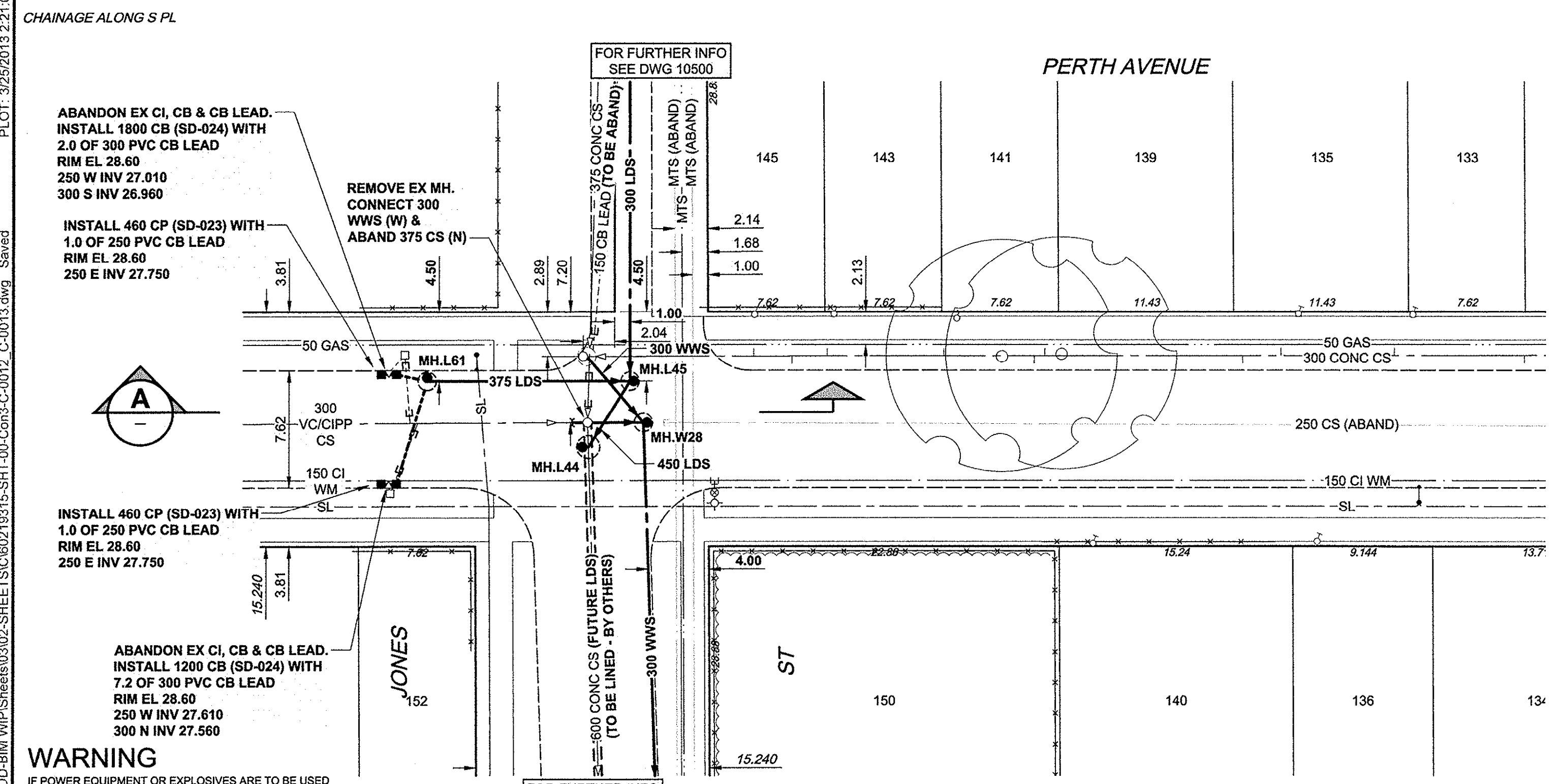
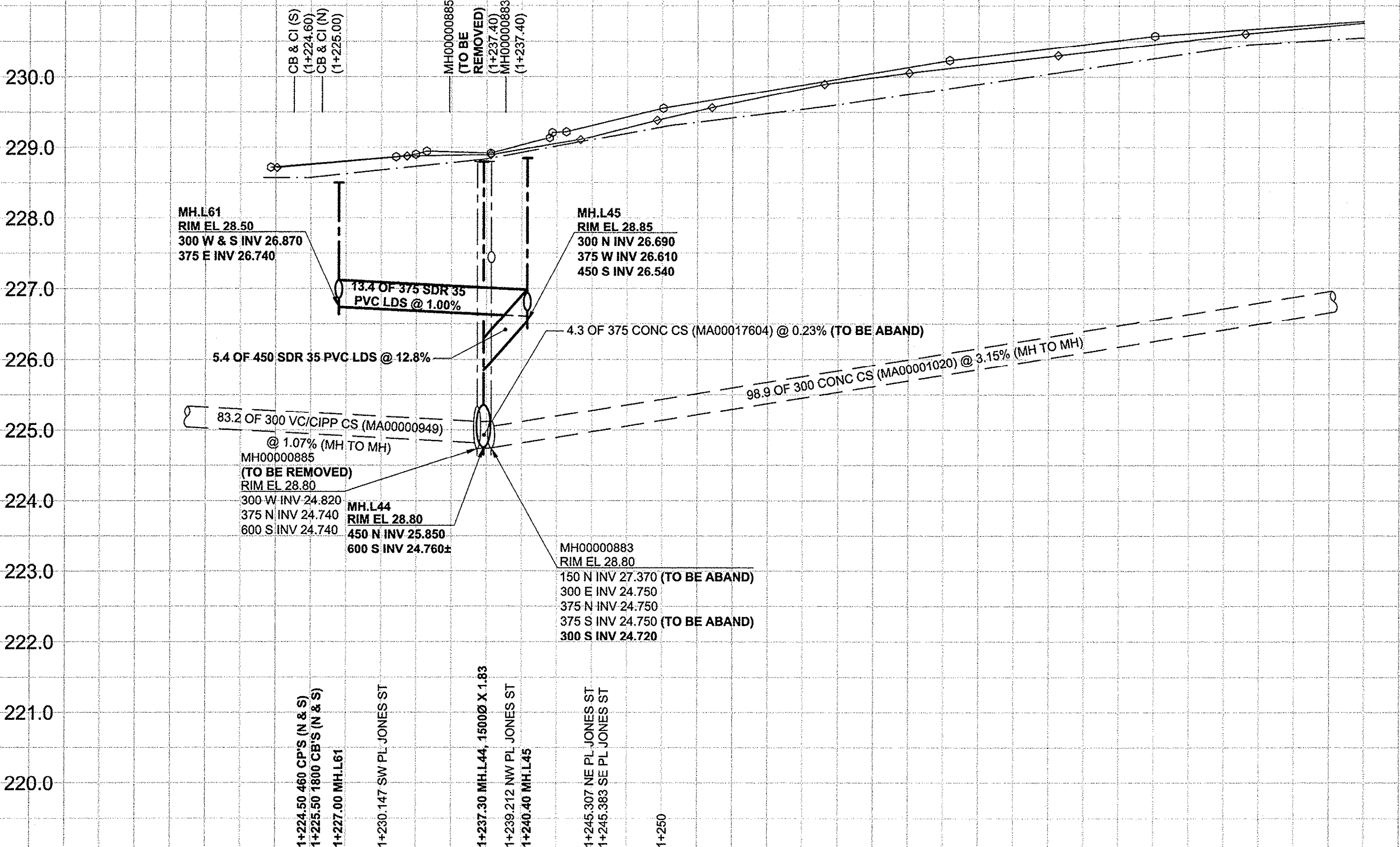
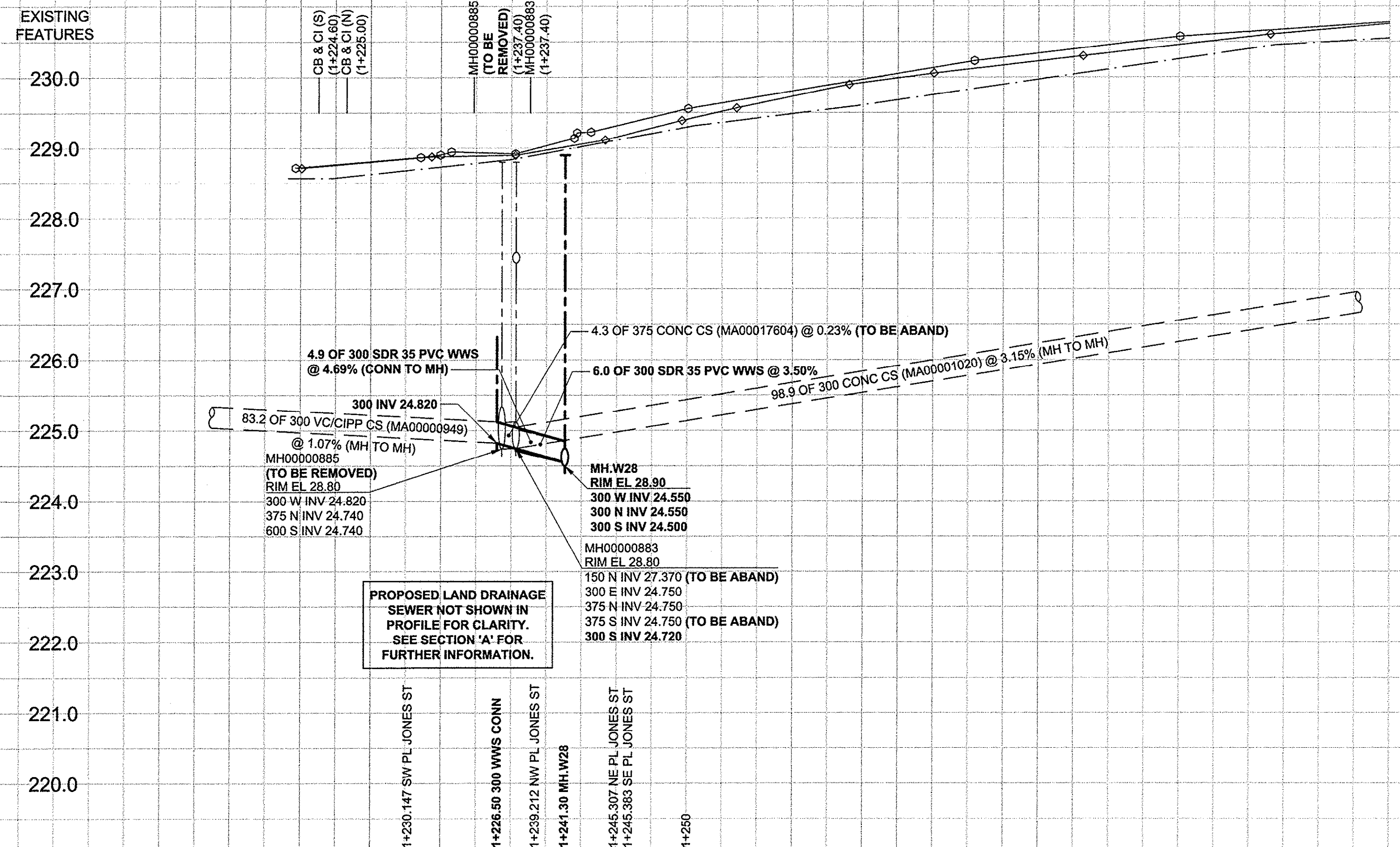
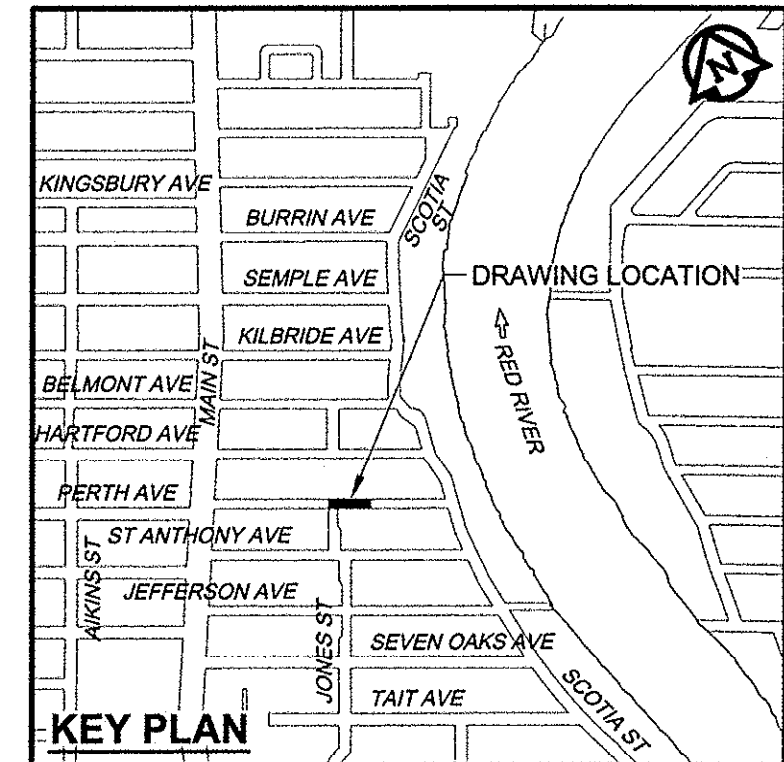


D SIZE 22" x 34" (559mm x 864mm) PLOT: 3/29/2013 2:21:05 PM AECOM FILE NAME: P:\60219315\000-CADD\040-CADD-BIM\WP\Sheets\0302-SHEET(S)\030219315-SHT-00-Cor3-C-0012_C-0013.dwg Saved



- CONSTRUCTION NOTES:**
- FOR DETAILED TEST HOLE INFORMATION, SEE SPECIFICATION.
 - LOCATION OF SERVICES SHOWN ON DRAWINGS ARE APPROXIMATE.
 - CONFIRM LOCATION OF ALL WATER & WASTEWATER SERVICES IN THE FIELD.
 - INSTALL NEW SEWERS, CATCHBASIN LEADS AND WATERMANS BY TRENCHLESS METHODS.
 - ALL SHAFTS SHALL HAVE CLASS 3 BACKFILL.



WARNING
 IF POWER EQUIPMENT OR EXPLOSIVES ARE TO BE USED FOR EXCAVATION ON THIS PROJECT, THE CONTRACTOR MUST:
 1) NOTIFY THE GAS COMPANY OF THE PROPOSED LOCATION OF EXCAVATION.
 2) TAKE PRECAUTION TO AVOID DAMAGE TO GAS COMPANY INSTALLATIONS.
 SEE PROVINCIAL REGULATION 140/92 FOR DETAILS

APEGM
 Certificate of Authorization
 AECOM Canada Ltd.
 No. 4671 Date: March 26/2013

METRIC
 WHOLE NUMBERS INDICATE MILLIMETRES
 DECIMALIZED NUMBERS INDICATE METRES

BID OPPORTUNITY NO. 235-2013

LEGEND - PLAN	LEGEND - PROFILE	NEW	EXISTING
150 WM	150 WM	150 WM	150 WM
HYDRANT	REDUCER	HYDRANT	REDUCER
VALVE	COUPLING	VALVE	COUPLING
300 LDS	ANODE	300 LDS	ANODE
250 WWS	HYDRO	250 WWS	HYDRO
MANHOLE	MTS	MANHOLE	MTS
CATCH BASIN	GAS	CATCH BASIN	GAS
CURB INLET	TESTHOLE	CURB INLET	TESTHOLE
CULVERT	LAMP STANDARD	CULVERT	LAMP STANDARD
PIPE ABANDONMENTS	TREE	PIPE ABANDONMENTS	TREE
SURVEY BAR	PAVING STONE	SURVEY BAR	PAVING STONE
EXISTING	LEGEND - PLAN	NEW	EXISTING

LOCATION APPROVED
 UNDERGROUND STRUCTURES

DATE: _____

NOTE:
 LOCATION OF UNDERGROUND STRUCTURES AS SHOWN ARE BASED ON THE BEST INFORMATION AVAILABLE. BUT NO GUARANTEE IS GIVEN THAT ALL EXISTING UTILITIES ARE SHOWN OR THAT THE GIVEN LOCATIONS ARE EXACT. CONFIRMATION OF EXISTENCE AND EXACT LOCATION OF ALL SERVICES MUST BE OBTAINED FROM THE INDIVIDUAL UTILITIES BEFORE PROCEEDING WITH CONSTRUCTION.

NO.	REVISIONS	DATE	BY
0	ISSUED FOR CONSTRUCTION	13/03/26	ADL

DESIGNED BY	FM I	CHECKED BY	EDT
DRAWN BY	ADL	APPROVED BY	[Signature]
HOR. SCALE	1:250	RELEASED FOR CONSTRUCTION	[Signature]
VERT. SCALE	1:50	DATE	March 26/13

PROFESSIONAL'S SEAL
E.D.J. TOUPIN
 Member
 23484
 26/03/2013
 REGISTERED PROFESSIONAL ENGINEER
 CONSULTANT DRAWING NO.
 60219315-SHT-00-Cor3-C-0012_C-0013

THE CITY OF WINNIPEG WATER AND WASTE DEPARTMENT

JEFFERSON EAST COMBINED SEWER RELIEF CONTRACT 3

PERTH AVENUE

175m EAST OF MAIN STREET TO 130m WEST OF SCOTIA STREET

SHEET 12 OF 13
 CITY DRAWING NUMBER
10510