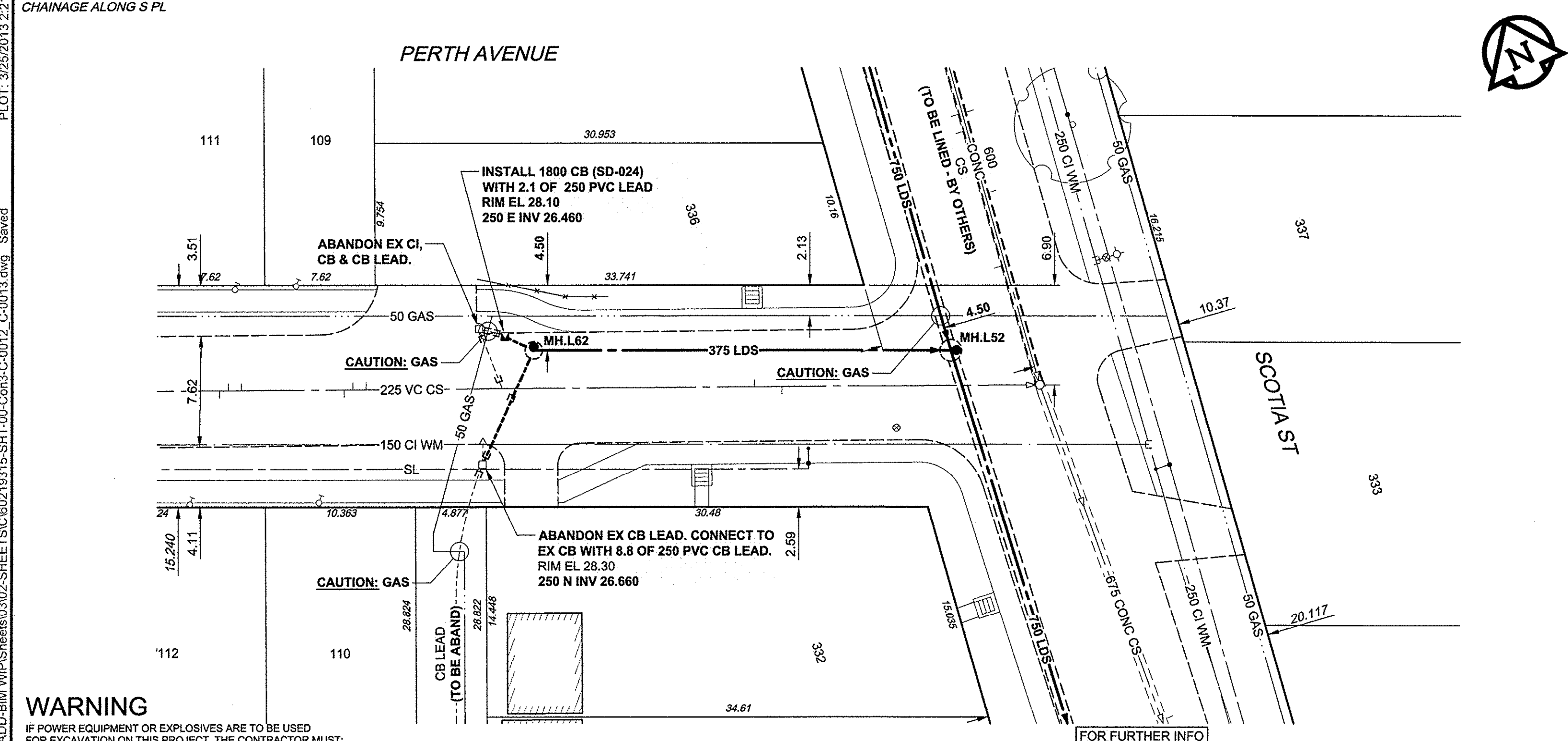
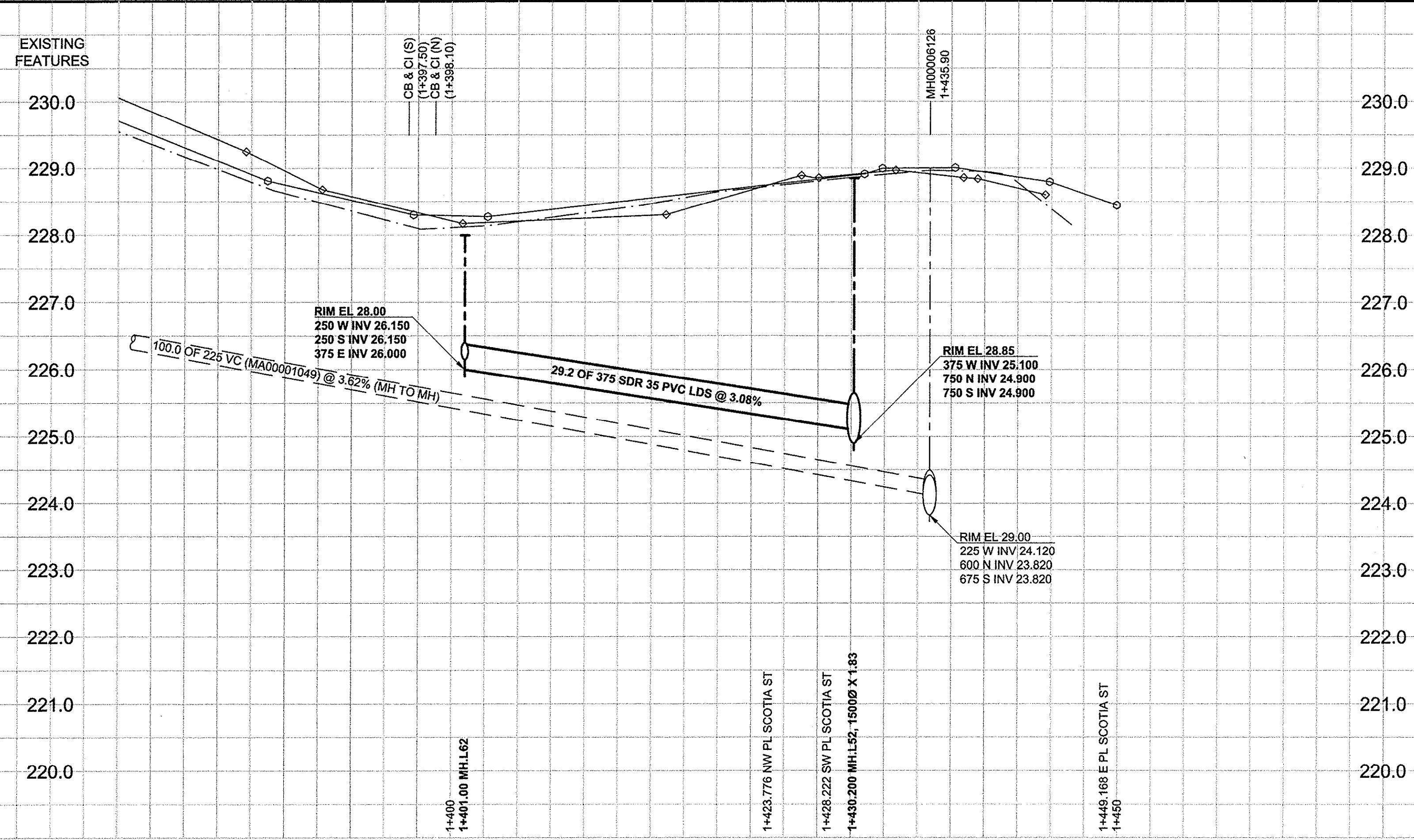
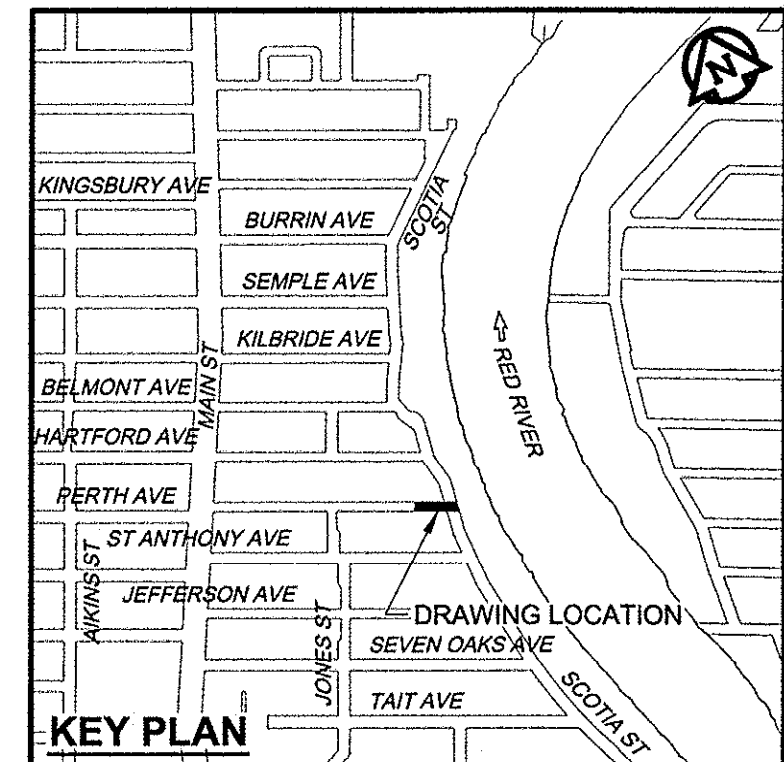


D SIZE 22" x 34" (559mm x 864mm) PLOT: 3/25/2013 2:21:22 PM AECOM REVIEW DRAFT CHK



WARNING
 IF POWER EQUIPMENT OR EXPLOSIVES ARE TO BE USED FOR EXCAVATION ON THIS PROJECT, THE CONTRACTOR MUST:
 1) NOTIFY THE GAS COMPANY OF THE PROPOSED LOCATION OF EXCAVATION.
 2) TAKE PRECAUTION TO AVOID DAMAGE TO GAS COMPANY INSTALLATIONS.
 SEE PROVINCIAL REGULATION 140/92 FOR DETAILS.

- CONSTRUCTION NOTES:**
- FOR DETAILED TEST HOLE INFORMATION, SEE SPECIFICATION.
 - LOCATION OF SERVICES SHOWN ON DRAWINGS ARE APPROXIMATE.
 - CONFIRM LOCATION OF ALL WATER & WASTEWATER SERVICES IN THE FIELD.
 - INSTALL NEW SEWERS, CATCHBASIN LEADS AND WATERMANS BY TRENCHLESS METHODS.
 - ALL SHAFTS SHALL HAVE CLASS 3 BACKFILL.



APEGM
 Certificate of Authorization
 AECOM Canada Ltd.
 No. 4671 Date: March 26/2013

METRIC
 WHOLE NUMBERS INDICATE MILLIMETRES
 DECIMALIZED NUMBERS INDICATE METRES

BID OPPORTUNITY NO. 235-1013

SYMBOL	DESCRIPTION	SYMBOL	DESCRIPTION	SYMBOL	DESCRIPTION	SYMBOL	DESCRIPTION
150 WM	WATERMAIN	150 WM	WATERMAIN	150 WM	WATERMAIN	150 WM	WATERMAIN
Hydrant	HYDRANT	Hydrant	HYDRANT	Hydrant	HYDRANT	Hydrant	HYDRANT
Valve	VALVE	Valve	VALVE	Valve	VALVE	Valve	VALVE
300 LDS	LAND DRAINAGE SEWER	300 LDS	LAND DRAINAGE SEWER	300 LDS	LAND DRAINAGE SEWER	300 LDS	LAND DRAINAGE SEWER
250 WWS	WASTE WATER SEWER	250 WWS	WASTE WATER SEWER	250 WWS	WASTE WATER SEWER	250 WWS	WASTE WATER SEWER
Manhole	MANHOLE	Manhole	MANHOLE	Manhole	MANHOLE	Manhole	MANHOLE
Catch Basin	CATCH BASIN	Catch Basin	CATCH BASIN	Catch Basin	CATCH BASIN	Catch Basin	CATCH BASIN
Curb Inlet	CURB INLET	Curb Inlet	CURB INLET	Curb Inlet	CURB INLET	Curb Inlet	CURB INLET
Culvert	CULVERT	Culvert	CULVERT	Culvert	CULVERT	Culvert	CULVERT
Pipe Abandonments	PIPE ABANDONMENTS	Pipe Abandonments	PIPE ABANDONMENTS	Pipe Abandonments	PIPE ABANDONMENTS	Pipe Abandonments	PIPE ABANDONMENTS
Survey Bar	SURVEY BAR	Survey Bar	SURVEY BAR	Survey Bar	SURVEY BAR	Survey Bar	SURVEY BAR
Existing	LEGEND - PLAN	New	LEGEND - PLAN	Existing	LEGEND - PROFILE	New	LEGEND - PROFILE

LOCATION APPROVED
 UNDERGROUND STRUCTURES

DATE: _____

NOTE:
 LOCATION OF UNDERGROUND STRUCTURES AS SHOWN ARE BASED ON THE BEST INFORMATION AVAILABLE. BUT NO GUARANTEE IS GIVEN THAT ALL EXISTING UTILITIES ARE SHOWN OR THAT THE GIVEN LOCATIONS ARE EXACT. CONFIRMATION OF EXISTENCE AND EXACT LOCATION OF ALL SERVICES MUST BE OBTAINED FROM THE INDIVIDUAL UTILITIES BEFORE PROCEEDING WITH CONSTRUCTION.

NO.	REVISIONS	DATE	BY
0	ISSUED FOR CONSTRUCTION	13/03/26	ADL

DESIGNED BY	FMI	CHECKED BY	EDT
DRAWN BY	ADL	APPROVED BY	[Signature]
HOR. SCALE	1:250	RELEASED FOR CONSTRUCTION	[Signature]
VERT. SCALE	1:50	DATE	March 26/13

PROFESSIONAL'S SEAL
E.D.J. TOUPIN
 Member
 23484
 26/03/2013
 CONSULTANT DRAWING NO.
 60219315-SHT-00-Cons3-C-0012_C-0013

THE CITY OF WINNIPEG
 WATER AND WASTE DEPARTMENT

JEFFERSON EAST
 COMBINED SEWER RELIEF
 CONTRACT 3
 PERTH AVENUE
 130m EAST OF JONES STREET TO
 SCOTIA STREET

SHEET 13 OF 13
 CITY DRAWING NUMBER
10511
 REV 0