

File Name: P:\Projects\2013\13-0107-001\DocControl\ToBeIssued\DWG\247-2013_D-13158-Rev.0.dwg - Tab: D-13158-Rev.0.dwg - Tab: D-13158-Rev.0.dwg [Tue 11:13am]

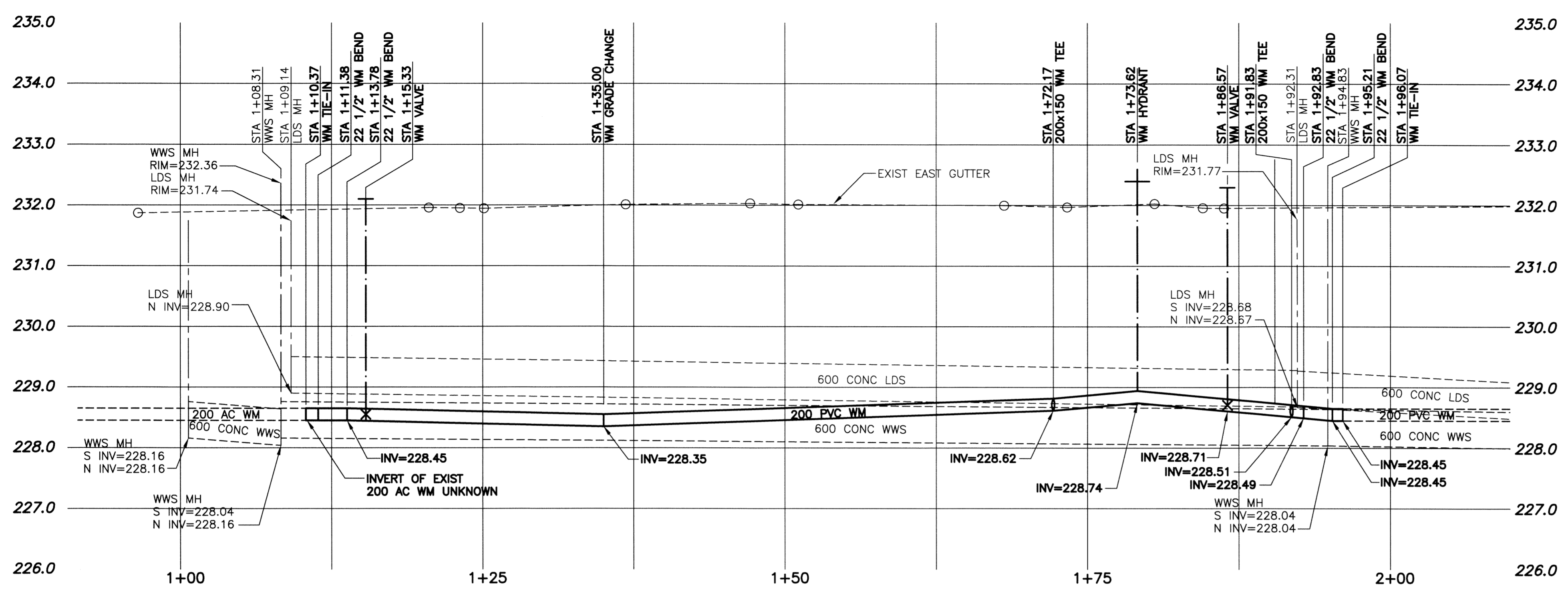
WARNING

1. NOTIFY THE GAS COMPANY OF THE PROPOSED LOCATION OF EXCAVATION.
2. TAKE PRECAUTION TO AVOID DAMAGE TO GAS COMPANY INSTALLATIONS.
3. SEE PROVINCIAL REGULATION 140/92 FOR DETAILS.

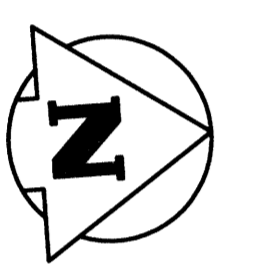
METRIC

WHOLE NUMBERS INDICATE MILLIMETRES
DECIMALIZED NUMBERS INDICATE METRES

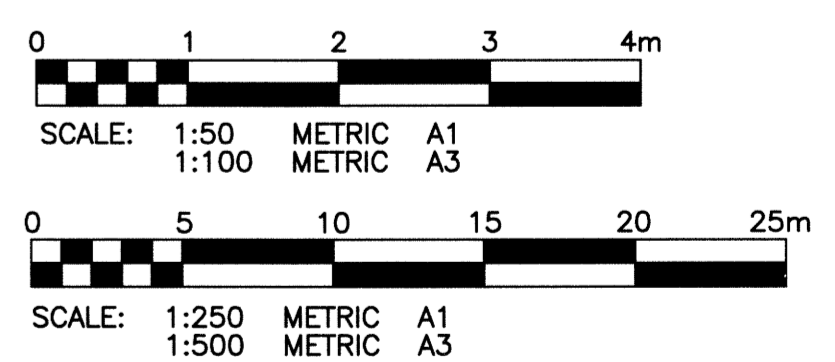
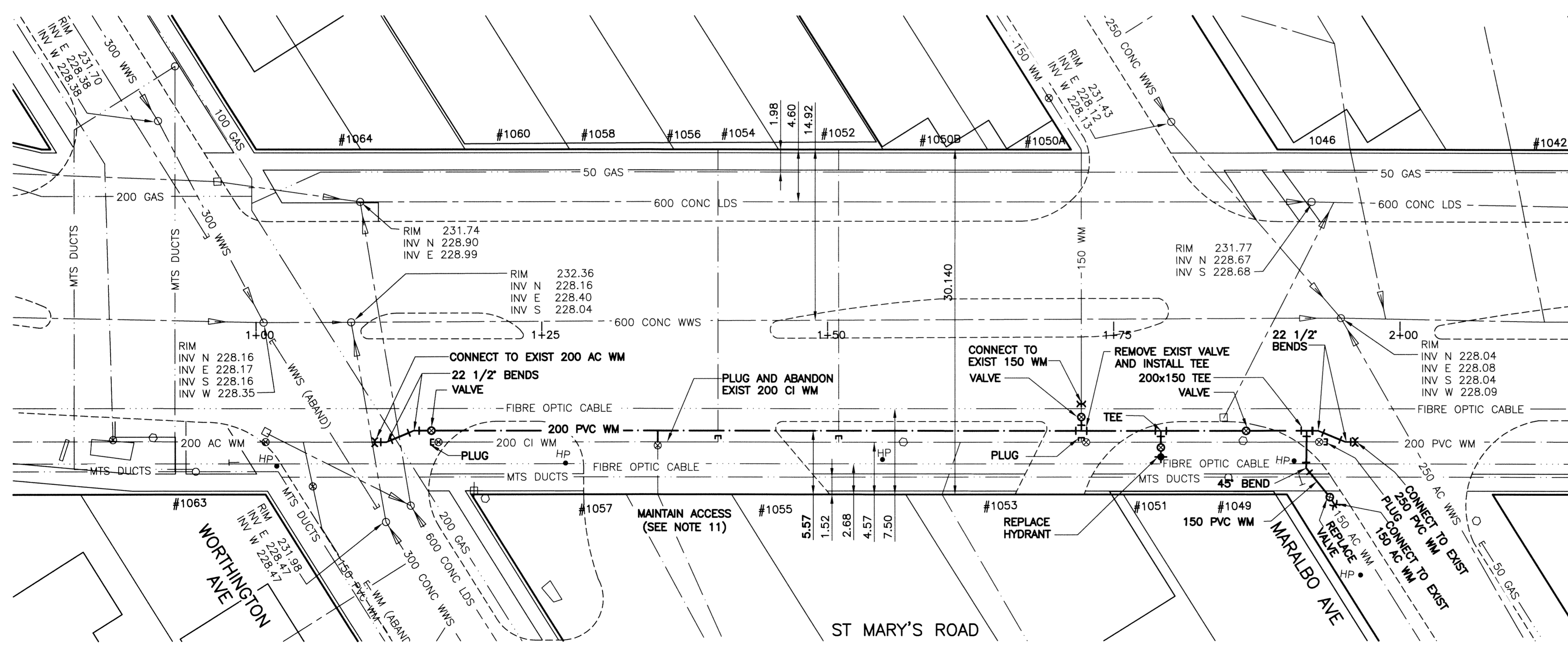
- CONSTRUCTION NOTES:**
1. EXPOSE WATERMAIN CONNECTIONS AND CONFIRM INVERTS PRIOR TO CONSTRUCTION.
 2. INSTALL WATERMAIN BY TRENCHLESS METHODS.
 3. ALL MATERIALS SHALL CONFORM TO THE CITY OF WINNIPEG STANDARD CONSTRUCTION SPECIFICATIONS.
 4. MINIMUM COVER TO TOP OF PROPOSED WATERMAIN SHALL BE 2.5m FROM STREET CENTERLINE.
 5. INSTALL ALL HYDRANTS WITH FLANGE ELEVATION 50mm TO 150mm ABOVE FINISHED GRADE.
 6. REPLACE ALL EXISTING LEAD SERVICES FROM THE PROPOSED WATERMAIN TO PROPERTY LINE.
 7. NOTIFY ALL AFFECTED RESIDENTS AND BUSINESSES 24 HOURS IN ADVANCE OF ANY WATER SHUTDOWN OR DISRUPTION OF SERVICES.
 8. LOCATION OF WATER SERVICES SHOWN ON DRAWING ARE APPROXIMATE. THE CONTRACTOR SHALL FIELD LOCATE ALL WATER SERVICES PRIOR TO CONSTRUCTION.
 9. BACKFILL UNDER OR WITHIN 1.0m OF PAVEMENTS, (INCLUDING SIDEWALKS) SHALL BE CLASS 3 BACKFILL EXCEPT AS NOTED. BACKFILL IN BOULEVARDS SHALL BE CLASS 5 BACKFILL.
 10. WATER VALVES TO BE CLOCKWISE TO CLOSE (BLACK OPERATING NUT)
 11. ACCESS AND EGRESS OF EMERGENCY VEHICLES TO ST. VITAL FIRE HALL (1057 ST. MARY'S) TO BE MAINTAINED AT ALL TIMES.



NOTE: CHAINAGES SHOWN ARE ALONG CENTERLINE OF R.O.W.



CURB STOP				CORPORATION STOP	
ADDRESS TYPE/NATURE	DISTANCE (METERS)	SIZE(mm) & TYPE	SHORT & LONG MEASUREMENT (METER)	CORPORATION LOCATION	REMARKS
1046 ST MARY'S RD	PROPERTY	20	1.68m L OF L HSE LINE		SC 150mm IN FROM SIDEWALK
COMMERCIAL		COPPER			
1049 ST MARY'S RD		20	1.8m NSL HSE		
RESIDENTIAL		COPPER			
1050A ST MARY'S RD					
COMMERCIAL					
1050B ST MARY'S RD			5.2m OF N LINE		CONSTRUCT 1-STORY COMM. BLDG 25mm WATER TO MARALBO 150mm TO MARALBO EXIST SERVICE
COMMERCIAL	BLDG 0.3m				12.2m FROM HYDRANT AT 1053 ST MARY'S RD
1051 ST MARY'S RD			5.5m LR CR OF HSE		
RESIDENTIAL	BLDG 0.6m				
1052 ST MARY'S RD		38	3.5m L/R	SAME AS CS	LOTS 11, 12, 13, 14 SWR/BLK/76
RESIDENTIAL	BLDG 3.0m	COPPER	50.3m N OF MANHOLE		OLD SERV CMC/76
1053 ST MARY'S RD		20	13.4m R/L	11.0m S/VALVE	SEE PERMIT 3552-WATER CAPPED SEWER BLOCKED -SEWER PLUGGED IN LOT TUMI COULD NOT
RESIDENTIAL	BLDG 14.9m	COPPER	5.8m CURB		
1054 ST MARY'S RD			14.0m LR CORNER OF HSE		LOTS 11, 12, 13, 14
RESIDENTIAL	BLDG 1.8m		32.0m FR S/CURB/L MARALBO		
1055 ST MARY'S RD		20	1.8m NNHL		
RESIDENTIAL		COPPER			
1056 ST MARY'S RD			14.0m LR CORNER OF HSE		LOTS 11, 12, 13, 14
RESIDENTIAL	BLDG 1.8m		32.0m FR S/CURB/L MARALBO		
1057 ST MARY'S RD			5.9m SNL BLDG		SEWER
COMMERCIAL	PROPERTY 3.5		16.3m NW WORTHINGTON		***VALVE @ MAIN
1058 ST MARY'S RD					
RESIDENTIAL					
1063 ST MARY'S RD		20	1.5m NNHL		DR/WY/60
COMMERCIAL		COPPER			
1064 ST MARY'S RD		20	1.1m NSHL		DR/WY/61
RESIDENTIAL		COPPER			



EXISTING	LEGEND-PLAN	PROPOSED	EXISTING	LEGEND-PLAN	PROPOSED	EXISTING	LEGEND-PROFILE	PROPOSED
150 WM	WATERMAIN	150 WM	HYDRO	150 WM	WATERMAIN	150 WM	WATERMAIN	150 WM
Hydrant symbol	HYDRANT	Hydrant symbol	M.T.S.	Hydrant symbol	HYDRANT, VALVE	Hydrant symbol	HYDRANT, VALVE	Hydrant symbol
Valve symbol	VALVE	Valve symbol	CONCRETE	Valve symbol	CONCRETE	Valve symbol	CONCRETE	Valve symbol
300 LDS	LAND DRAINAGE SEWER	300 LDS	ASPHALT	300 LDS	LAND DRAINAGE SEWER	300 LDS	LAND DRAINAGE SEWER	300 LDS
250 WWS	WASTE WATER SEWER	250 WWS	SIDEWALK	250 WWS	WASTE WATER SEWER	250 WWS	WASTE WATER SEWER	250 WWS
Manhole symbol	MANHOLE	Manhole symbol	PLANNING	Manhole symbol	PLANNING	Manhole symbol	PLANNING	Manhole symbol
Catch basin symbol	CATCH BASIN	Catch basin symbol	PROPERTY LINE	Catch basin symbol	PROPERTY LINE	Catch basin symbol	PROPERTY LINE	Catch basin symbol
Curb inlet symbol	CURB INLET	Curb inlet symbol	SURVEY BAR	Curb inlet symbol	SURVEY BAR	Curb inlet symbol	SURVEY BAR	Curb inlet symbol
Bend symbol	BEND	Bend symbol	GAS	Bend symbol	GAS	Bend symbol	GAS	Bend symbol
Reducer symbol	REDUCER	Reducer symbol	CURB STOP	Reducer symbol	CURB STOP	Reducer symbol	CURB STOP	Reducer symbol
Tee symbol	TEE	Tee symbol	TEE	Tee symbol	TEE	Tee symbol	TEE	Tee symbol

LOCATION APPROVED UNDERGROUND STRUCTURES

SUPV. U/G STRUCTURES COMMITTEE DATE

NOTE:
LOCATION OF UNDERGROUND STRUCTURES AS SHOWN ARE BASED ON THE BEST INFORMATION AVAILABLE BUT NO GUARANTEE IS GIVEN THAT THE GIVEN LOCATIONS ARE EXACT. CONFIRMATION OF EXISTENCE AND EXACT LOCATION OF ALL SERVICES MUST BE OBTAINED FROM THE INDIVIDUAL UTILITIES BEFORE PROCEEDING WITH CONSTRUCTION.

B.M. KGS BASE ELEV. DWGS BASE ON C.S.R.S. NAD 83 SYSTEM UTM GRID.

KGS GROUP CONSULTING ENGINEERS

DESIGNED BY: BJM
DRAWN BY: DMW

CHECKED BY: RBO
APPROVED BY: [Signature]

HOR. SCALE: 1:250
VERTICAL: 1:50

ISSUED FOR CONSTRUCTION: 13/03/26
NO. REVISIONS: [Blank]

DATE: 13/01/16

ENGINEER'S SEAL

PROVINCE OF MANITOBA
B.J. MIKOLAYENKO
Member 24688
REGISTERED PROFESSIONAL ENGINEER

CONSULTANT DRAWING NO. 13-0107-001

THE CITY OF WINNIPEG WATER AND WASTE DEPARTMENT

PROJECT TITLE: 2013 WATERMAIN RENEWALS CONTRACT 4

ST MARY'S ROAD WORTHINGTON AVE TO MARALBO AVE STA 1+00 TO STA 2+00

SHEET 01 OF 01
COMPUTER FILE NAME: ST MARYS_1 PLOT
CITY DRAWING NUMBER: D-13158