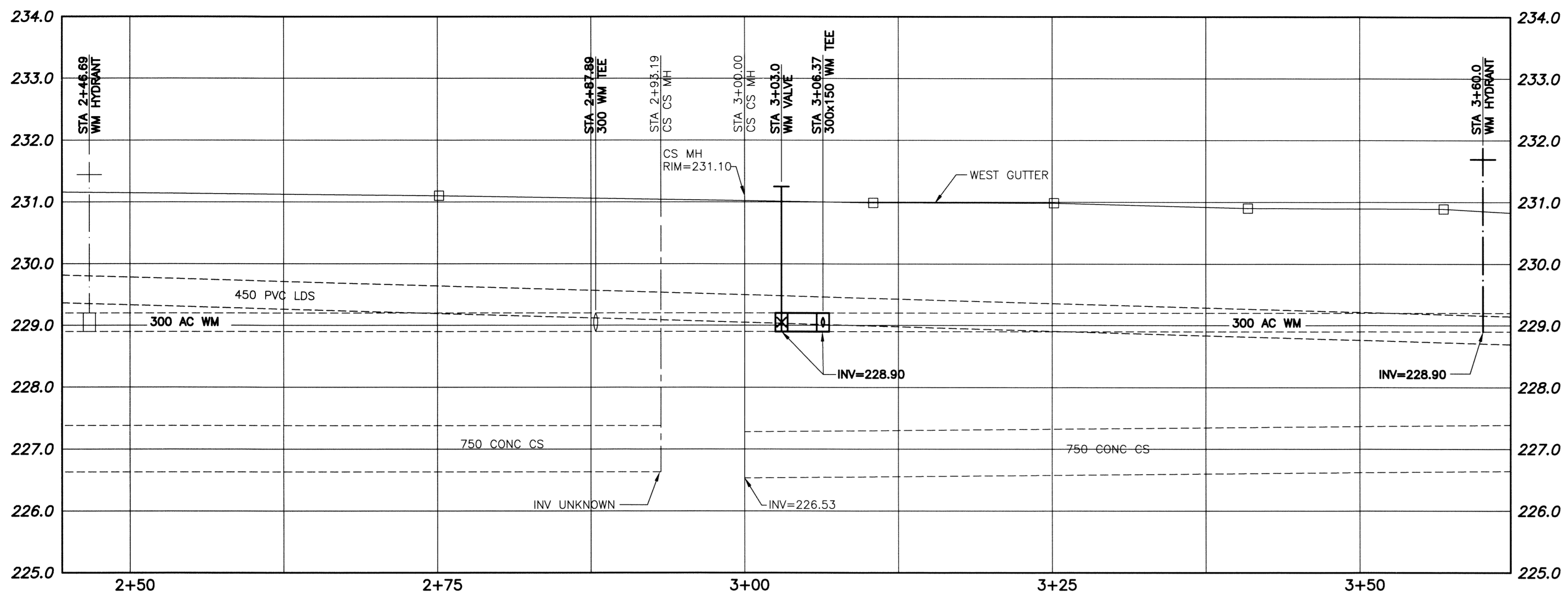


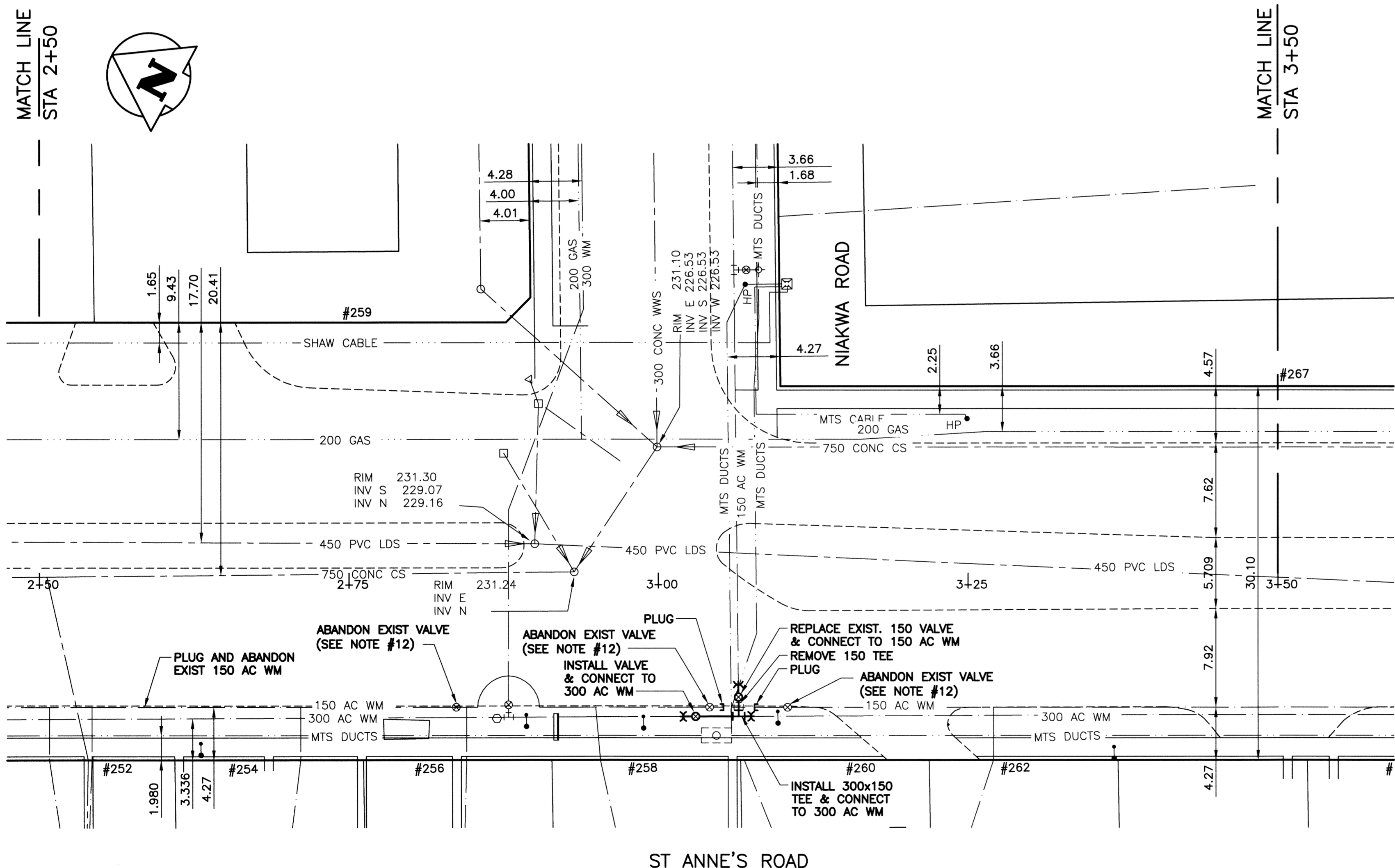
File Name: P:\Projects\2013\13-0107-001\DocControl\ToBeIssued\DWG\247-2013\_D-13160-Rev 0.dwg - Tab: D-13160 Plotted By: Dderoche 13/03/26 [Tue 11:12am]



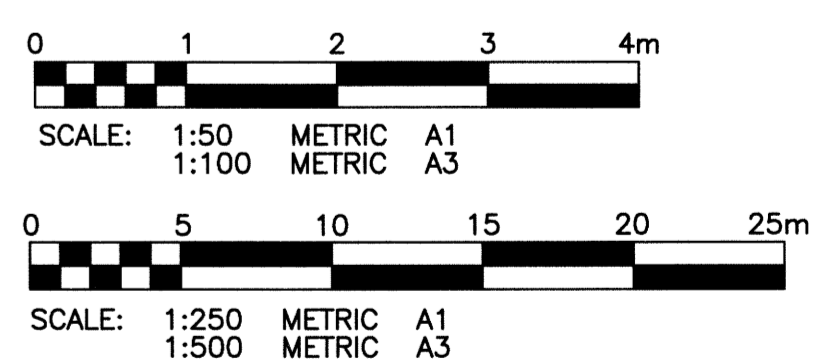
**WARNING**  
 1. NOTIFY THE GAS COMPANY OF THE PROPOSED LOCATION OF EXCAVATION.  
 2. TAKE PRECAUTION TO AVOID DAMAGE TO GAS COMPANY INSTALLATIONS.  
 3. SEE PROVINCIAL REGULATION 140/92 FOR DETAILS.

**METRIC**  
 WHOLE NUMBERS INDICATE MILLIMETRES  
 DECIMALIZED NUMBERS INDICATE METRES

- CONSTRUCTION NOTES:**
- EXPOSE WATERMAIN CONNECTIONS AND CONFIRM INVERTS PRIOR TO CONSTRUCTION.
  - INSTALL WATERMAIN BY TRENCHLESS METHODS.
  - ALL MATERIALS SHALL CONFORM TO THE CITY OF WINNIPEG STANDARD CONSTRUCTION SPECIFICATIONS.
  - MINIMUM COVER TO TOP OF PROPOSED WATERMAIN SHALL BE 2.5m FROM STREET CENTERLINE.
  - INSTALL ALL HYDRANTS WITH FLANGE ELEVATION 50mm TO 150mm ABOVE FINISHED GRADE.
  - REPLACE ALL EXISTING LEAD SERVICES FROM THE PROPOSED WATERMAIN TO PROPERTY LINE.
  - NOTIFY ALL AFFECTED RESIDENTS AND BUSINESSES 24 HOURS IN ADVANCE OF ANY WATER SHUTDOWN OR DISRUPTION OF SERVICES.
  - LOCATION OF WATER SERVICES SHOWN ON DRAWING ARE APPROXIMATE. THE CONTRACTOR SHALL FIELD LOCATE ALL WATER SERVICES PRIOR TO CONSTRUCTION.
  - BACKFILL UNDER OR WITHIN 1.0m OF PAVEMENTS, (INCLUDING SIDEWALKS) SHALL BE CLASS 3 BACKFILL EXCEPT AS NOTED. BACKFILL IN BOULEVARDS SHALL BE CLASS 5 BACKFILL.
  - WATER VALVES TO BE CLOCKWISE TO CLOSE (BLACK OPERATING NUT)
  - THE CONTRACTOR SHALL DETERMINE ON-SITE TO WHICH WATERMAIN (150 OR 300) EACH WATER SERVICE, ALONG THE ALIGNMENT OF THE 150 WATERMAIN BEING ABANDONED, IS CONNECTED. IF WATER SERVICES ARE CONNECTED TO THE 150 WATERMAIN, THE CONTRACTOR SHALL RELOCATE THE CONNECTION TO THE 300 WATERMAIN.
  - THE CONTRACTOR SHALL REMOVE ALL VALVE BOXES AND CASINGS ALONG THE 150 AC WATERMAIN TO BE ABANDONED AND PATCH RESULTANT HOLE.



CURB STOP				CORPORATION STOP	
ADDRESS TYPE/NATURE	DISTANCE (METERS)	SIZE(mm) & TYPE	SHORT & LONG MEASUREMENT (METER)	CORPORATION LOCATION	REMARKS
250 ST ANNE'S RD RESIDENTIAL		20 COPPER	3.35 NSHL		SEE PERMIT 36612
252 ST ANNE'S RD RESIDENTIAL		12 COPPER	1.70 NSHL		SEWER/61 TAX STV3-2 0200-08
254 ST ANNE'S RD RESIDENTIAL		25 COPPER	3.50 NSHL		SEWER/61. 97/10/07-CHANGED LEAKING
255 ST ANNE'S RD COMMERCIAL	PROPERTY 0.30	25 COPPER	6.30 OUT FROM HSE	OPP S/C	SEWER/65
256 ST ANNE'S RD RESIDENTIAL		25 COPPER	4.30 EWSL		SEWER/61
258 ST ANNE'S RD RESIDENTIAL		25 COPPER	1.50 SNHL		25mm COPPER COUPLE
259 ST ANNE'S RD COMMERCIAL		50 COPPER	3.80 N/NPL	0.30 N OF S/C	NOV/01-25mm COUPLING 0.3m FROM CORP USED
259 ST ANNE'S RD COMMERCIAL	PROPERTY 0.60	20.70 COPPER	EEL ST ANNE		2x3/4 BOSS CLAMP
259 ST ANNE'S RD COMMERCIAL	BLDG 0.90	25 COPPER	2.10 N S/W COR BLDG		*** NOTE 25mm SERVICE TO KIOSK*** THERE IS A 50mm MASTER SERVICE MEAS. ARE 2.70m W S/W CO
260 ST ANNE'S RD COMMERCIAL	BLDG 7.00	20 COPPER	0.60 RR COR HSE		DR/WY A8453 SWH 150mm CONC INV @ HSE 752.18
264 ST ANNE'S RD RESIDENTIAL		12 COPPER	1.10 NSHL		@ PL 748.42
266 ST ANNE'S RD RESIDENTIAL		12 COPPER	1.37 SNHL		
267 ST ANNE'S RD RESIDENTIAL		50 COPPER	4.10 E HYD ON NIAKWA		DR/WY D822 SEWER 200mm CONC INV @ BLDG 750.38 @ PL 748.77



**APEGM**  
 Certificate of Authorization  
 KGS Group  
 No. 245

EXISTING	LEGEND-PLAN	PROPOSED	EXISTING	LEGEND-PLAN	PROPOSED	EXISTING	LEGEND-PROFILE	PROPOSED
150 WM	WATERMAIN	150 WM	HYDRO	WATERMAIN	150 WM	WATERMAIN	150 WM	WATERMAIN
300 LDS	LAND DRAINAGE SEWER	300 LDS	M.T.S.	HYDRANT, VALVE	300 LDS	LAND DRAINAGE SEWER	300 LDS	LAND DRAINAGE SEWER
250 WWS	WASTE WATER SEWER	250 WWS	CONCRETE	CONCRETE	250 WWS	WASTE WATER SEWER	250 WWS	WASTE WATER SEWER
MANHOLE	MANHOLE	MANHOLE	ASPHALT	ASPHALT	ASPHALT	ASPHALT	ASPHALT	ASPHALT
CATCH BASIN	CATCH BASIN	CATCH BASIN	SIDEWALK	SIDEWALK	SIDEWALK	SIDEWALK	SIDEWALK	SIDEWALK
CURB INLET	CURB INLET	CURB INLET	PLANNING	PLANNING	PLANNING	PLANNING	PLANNING	PLANNING
BEND	BEND	BEND	PROPERTY LINE	PROPERTY LINE	PROPERTY LINE	PROPERTY LINE	PROPERTY LINE	PROPERTY LINE
REDUCER	REDUCER	REDUCER	SURVEY BAR	SURVEY BAR	SURVEY BAR	SURVEY BAR	SURVEY BAR	SURVEY BAR
			GAS	GAS	GAS	GAS	GAS	GAS
			CURB STOP	CURB STOP	CURB STOP	CURB STOP	CURB STOP	CURB STOP
			TEE	TEE	TEE	TEE	TEE	TEE

**LOCATION APPROVED UNDERGROUND STRUCTURES**

SUPPLY U/G STRUCTURES COMMITTEE DATE

**NOTE:**  
 LOCATION OF UNDERGROUND STRUCTURES AS SHOWN ARE BASED ON THE BEST INFORMATION AVAILABLE BUT NO GUARANTEE IS GIVEN THAT ALL EXISTING UTILITIES ARE SHOWN OR THAT THE GIVEN LOCATIONS ARE EXACT. CONFIRMATION OF EXISTENCE AND EXACT LOCATION OF ALL SERVICES MUST BE OBTAINED FROM THE INDIVIDUAL UTILITIES BEFORE PROCEEDING WITH CONSTRUCTION.

NO.	REVISIONS	DATE	BY
0	ISSUED FOR CONSTRUCTION	13/03/26	BJM

DESIGNED BY	CHECKED BY
BJM	RBO
DRAWN BY	APPROVED BY
DMW	
HOR. SCALE:	VERTICAL:
1:250	1:50
DATE	DATE
13/01/16	

ENGINEER'S SEAL

**THE CITY OF WINNIPEG**  
 WATER AND WASTE DEPARTMENT

PROJECT TITLE  
**2013 WATERMAIN RENEWALS CONTRACT 4**

ST ANNE'S ROAD  
 FERMOR AVE TO HAVELOCK AVE  
 STA 2+50 TO STA 3+50

SHEET OF  
**02** OF **07**

COMPUTER FILE NAME  
**FERMOR AVE PLOT**

CITY DRAWING NUMBER  
**D-13160**