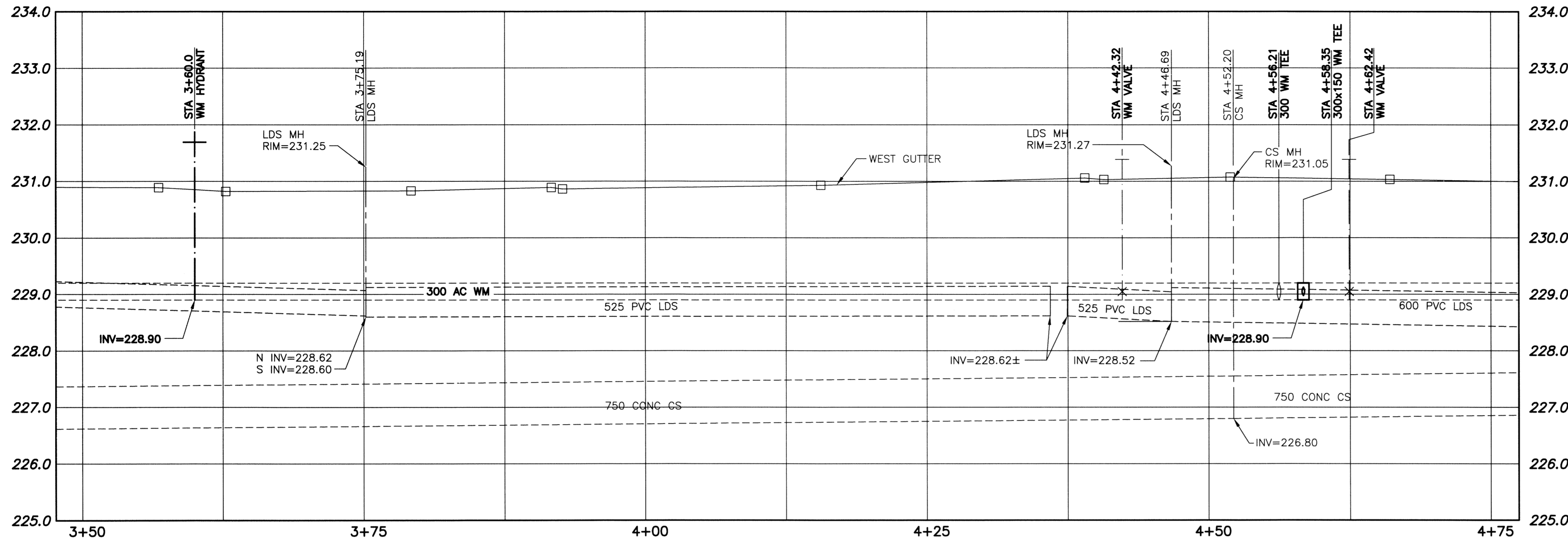


File Name: P:\Projects\2013\13-0107-001\Doc.Control\TeBelesued\DWG\247-2013\_D-13161-Rev 0.dwg - Tab: D-13161 Plotted By: Dderoche 13/03/26 [Tue 11:12am]

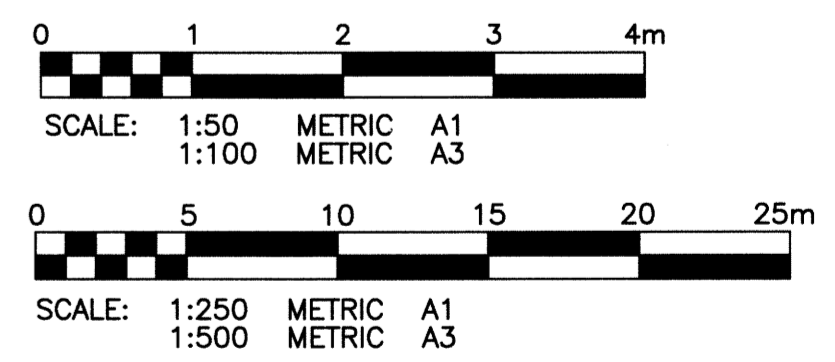
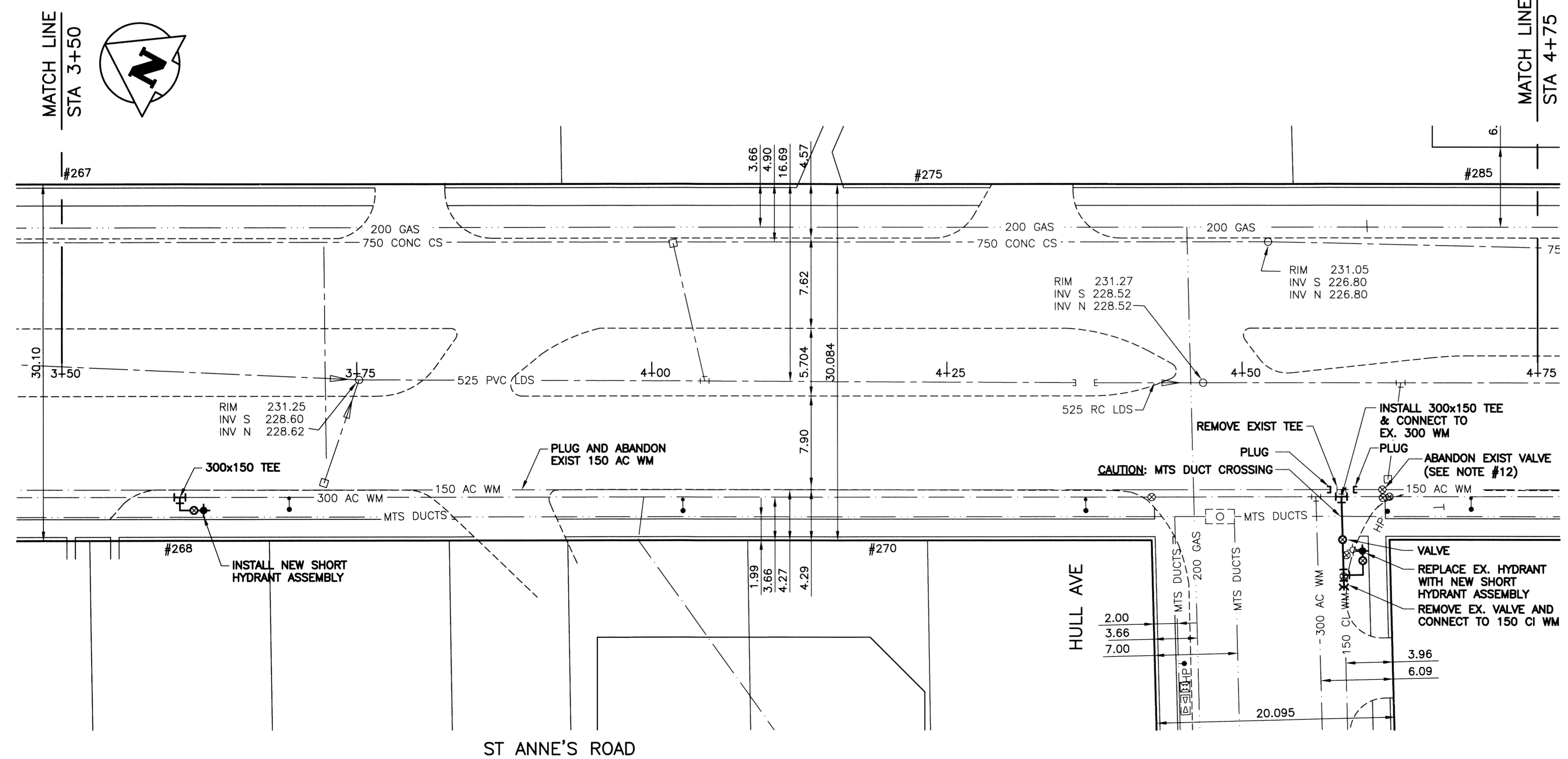
**WARNING**  
 1. NOTIFY THE GAS COMPANY OF THE PROPOSED LOCATION OF EXCAVATION.  
 2. TAKE PRECAUTION TO AVOID DAMAGE TO GAS COMPANY INSTALLATIONS.  
 3. SEE PROVINCIAL REGULATION 140/92 FOR DETAILS.

**METRIC**  
 WHOLE NUMBERS INDICATE MILLIMETRES  
 DECIMALIZED NUMBERS INDICATE METRES



- CONSTRUCTION NOTES:**
- EXPOSE WATERMAIN CONNECTIONS AND CONFIRM INVERTS PRIOR TO CONSTRUCTION.
  - INSTALL WATERMAIN BY TRENCHLESS METHODS.
  - ALL MATERIALS SHALL CONFORM TO THE CITY OF WINNIPEG STANDARD CONSTRUCTION SPECIFICATIONS.
  - MINIMUM COVER TO TOP OF PROPOSED WATERMAIN SHALL BE 2.5m FROM STREET CENTERLINE.
  - INSTALL ALL HYDRANTS WITH FLANGE ELEVATION 50mm TO 150mm ABOVE FINISHED GRADE.
  - REPLACE ALL EXISTING LEAD SERVICES FROM THE PROPOSED WATERMAIN TO PROPERTY LINE.
  - NOTIFY ALL AFFECTED RESIDENTS AND BUSINESSES 24 HOURS IN ADVANCE OF ANY WATER SHUTDOWN OR DISRUPTION OF SERVICES.
  - LOCATION OF WATER SERVICES SHOWN ON DRAWING ARE APPROXIMATE. THE CONTRACTOR SHALL FIELD LOCATE ALL WATER SERVICES PRIOR TO CONSTRUCTION.
  - BACKFILL UNDER OR WITHIN 1.0m OF PAVEMENTS, (INCLUDING SIDEWALKS) SHALL BE CLASS 3 BACKFILL EXCEPT AS NOTED. BACKFILL IN BOULEVARDS SHALL BE CLASS 5 BACKFILL.
  - THE CONTRACTOR SHALL DETERMINE ON-SITE TO WHICH WATERMAIN (150 OR 300) EACH WATER SERVICE, ALONG THE ALIGNMENT OF THE 150 WATERMAIN BEING ABANDONED, IS CONNECTED. IF WATER SERVICES ARE CONNECTED TO THE 150 WATERMAIN, THE CONTRACTOR SHALL RELOCATE THE CONNECTION TO THE 300 WATERMAIN.
  - THE CONTRACTOR SHALL REMOVE ALL VALVE BOXES AND CASINGS ALONG THE 150 AC WATERMAIN TO BE ABANDONED AND PATCH RESULTANT HOLE.

CURB STOP				CORPORATION STOP	
ADDRESS TYPE/NATURE	DISTANCE (METERS)	SIZE(mm) & TYPE	SHORT & LONG MEASUREMENT (METER)	CORPORATION LOCATION	REMARKS
267 ST ANNE'S RD		50	4.10 E HYD ON NAKWA		DR/WY D922 SEWER 200mm CONC INV @ BLDG
RESIDENTIAL		COPPER			750.38 @ PL 748.77
270 ST ANNE'S RD		38	3.00 RR BLDG LINE	OPP S/C	LAND DRAINAGE SEWER JUNCTION INT CB IN
COMMERCIAL	BLDG 6.70	COPPER	4.30 FROM CURB		MIDDLE OF LANE TRAX STN3-20155-09
275 ST ANNE'S RD		50	10.40 RRBL W/L ST ANNES		SWR 150mm CONC 24.10 FROM HSE 3.00 @PL
FIRE DOMESTIC		COPPER			2.10 @ HL
280 ST ANNE'S RD		38	3.00 SN IN SD/WK		MULT METERING W/28 2
COMMERCIAL		COPPER			
280 ST ANNE'S RD		38	3.00 SN IN SD/WK		DR/WY D274
COMMERCIAL		COPPER			MULT METERING
280 ST ANNE'S RD		38	3.00 SNL #282 IN SD/WK		DR/WY D274
COMMERCIAL		COPPER			MULT METERING
280 ST ANNE'S RD		20			MULT METERING W/28 2
COMMERCIAL		COPPER			



**APEGM**  
 Certificate of Authorization  
 KGS Group  
 No. 245

150 WM	150 WM	HYDRO	150 WM	WATERMAIN	150 WM
HYDRANT	HYDRANT	M.T.S.	HYDRANT, VALVE	HYDRANT, VALVE	HYDRANT, VALVE
VALVE	VALVE	CONCRETE	LAND DRAINAGE SEWER	LAND DRAINAGE SEWER	LAND DRAINAGE SEWER
300 LDS	300 LDS	ASPHALT	WASTE WATER SEWER	WASTE WATER SEWER	WASTE WATER SEWER
250 WWS	250 WWS	SIDEWALK	C PROFILE	C PROFILE	C PROFILE
MANHOLE	MANHOLE	PLANING	NORTH/WEST GUTTER	NORTH/WEST GUTTER	NORTH/WEST GUTTER
CATCH BASIN	CATCH BASIN	PROPERTY LINE	SOUTH/EAST GUTTER	SOUTH/EAST GUTTER	SOUTH/EAST GUTTER
CURB INLET	CURB INLET	SURVEY BAR	N/W, S/E R'S	N/W, S/E R'S	N/W, S/E R'S
BEND	BEND	GAS	N/W, S/E TOP/CURB	N/W, S/E TOP/CURB	N/W, S/E TOP/CURB
REDUCER	REDUCER	CURB STOP			
		TEE			
EXISTING	LEGEND-PLAN	PROPOSED	EXISTING	LEGEND-PROFILE	PROPOSED

**LOCATION APPROVED UNDERGROUND STRUCTURES**

LOCATIONS OF UNDERGROUND STRUCTURES AS SHOWN ARE BASED ON THE BEST INFORMATION AVAILABLE BUT NO GUARANTEE IS GIVEN THAT ALL EXISTING UTILITIES ARE SHOWN OR THAT THE GIVEN LOCATIONS ARE EXACT. CONFIRMATION OF EXISTENCE AND EXACT LOCATION OF ALL SERVICES MUST BE OBTAINED FROM THE INDIVIDUAL UTILITIES BEFORE PROCEEDING WITH CONSTRUCTION.

NO. REVISIONS: 0  
 DATE: 13/03/26  
 BY: [Signature]

B.M. KGS BASE ELEV.  
 DWGS BASE ON C.S.R.S. NAD 83 SYSTEM UTM GRID.

**KGS GROUP**  
 CONSULTING ENGINEERS

DESIGNED BY: BJM  
 DRAWN BY: DMW  
 CHECKED BY: RBO  
 APPROVED BY: [Signature]  
 HOR. SCALE: 1:250  
 VERTICAL: 1:50  
 ISSUED FOR CONSTRUCTION: 13/03/26  
 DATE: 13/01/16

ENGINEER'S SEAL  
 PROVINCE OF MANITOBA  
 B.J. MIKOLAYENKO  
 Member 24888  
 MARCH 26/2013  
 CONSULTANT DRAWING NO. 13-0107-001

**THE CITY OF WINNIPEG**  
 WATER AND WASTE DEPARTMENT

PROJECT TITLE: 2013 WATERMAIN RENEWALS CONTRACT 4  
 SHEET OF: 03 OF 07  
 COMPUTER FILE NAME: FERMOR AVE PLOT  
 CITY DRAWING NUMBER: D-13161

ST ANNE'S ROAD  
 FERMOR AVE TO HAVELOCK AVE  
 STA 3+50 TO STA 4+75