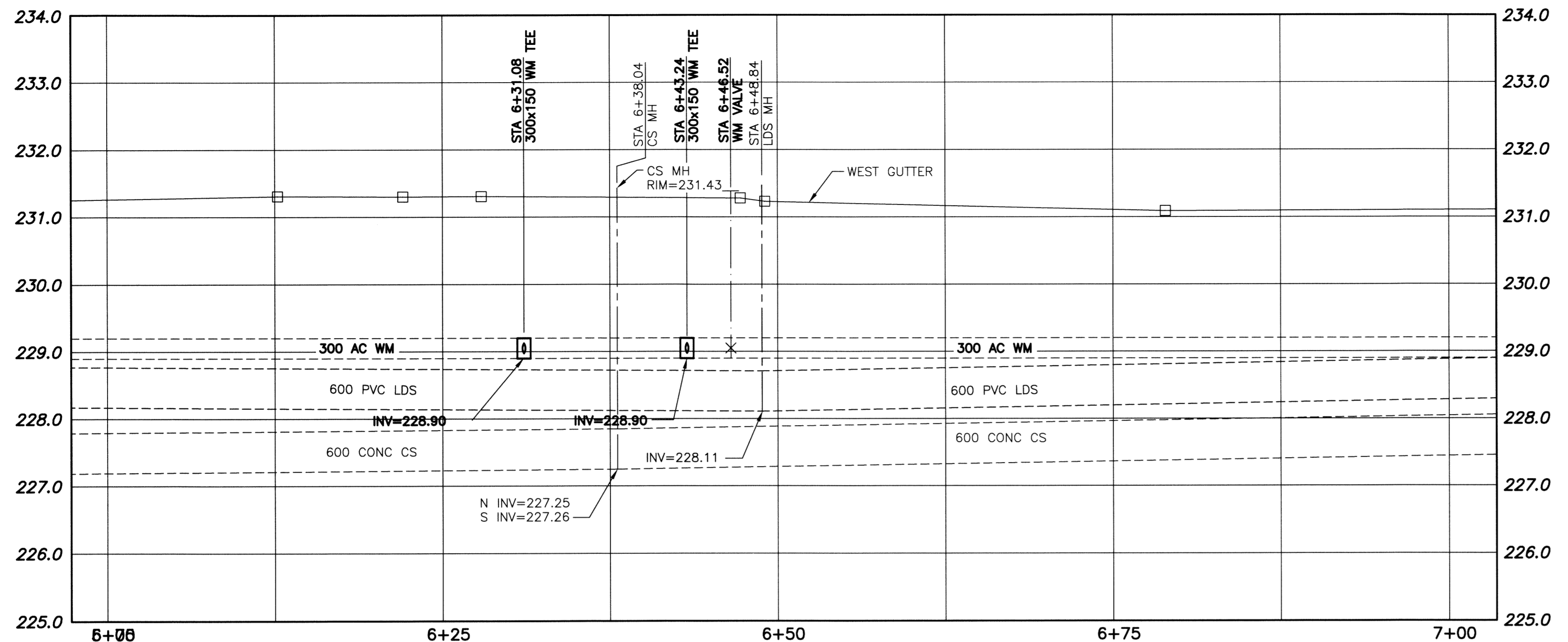


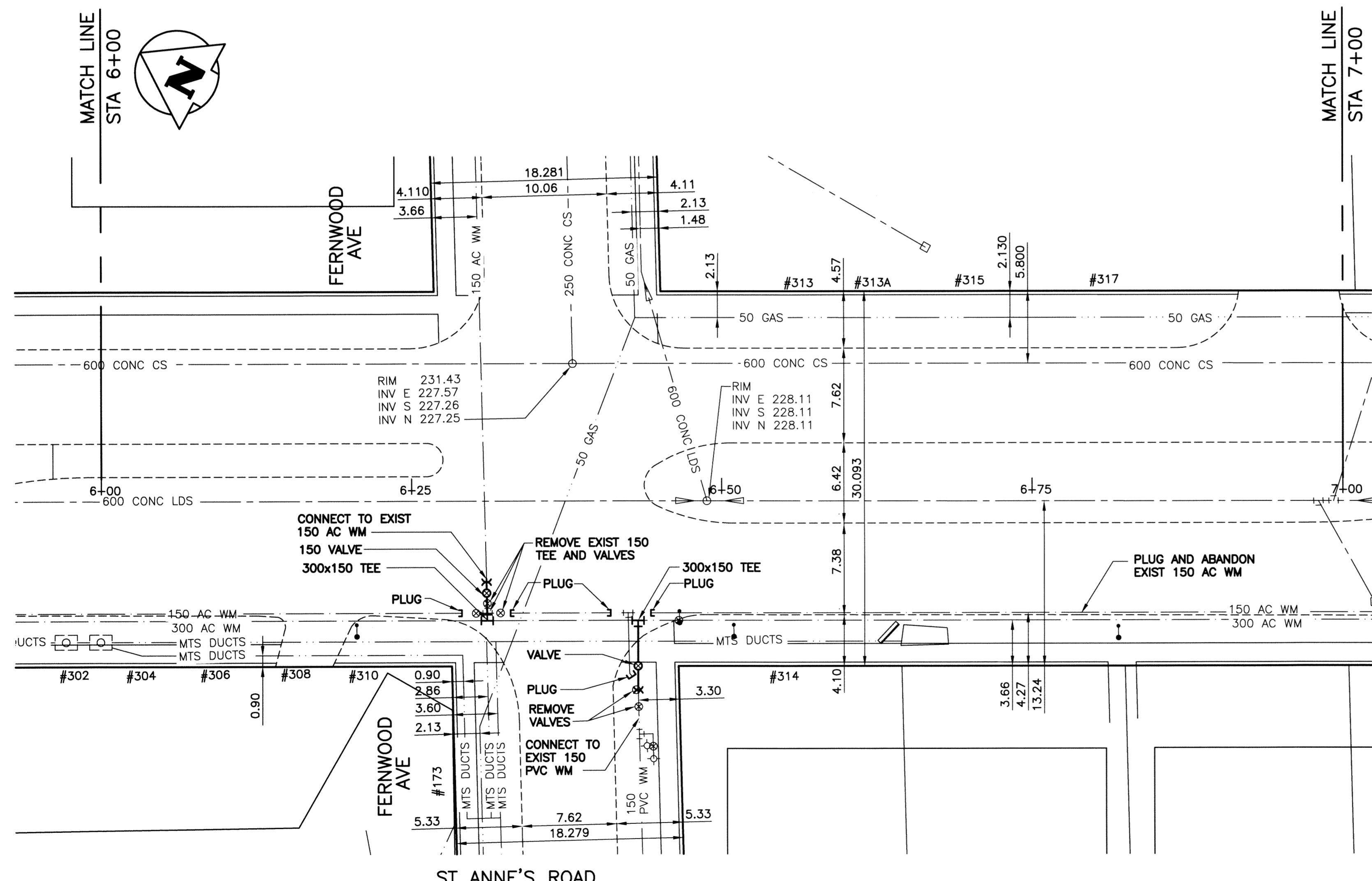
File Name: P:\Projects\2013\13-0107-001\DocControl\ToBeIssued\DWG\247-2013_D-13163-Rev.0.dwg - Tab: D-13163 Plotted By: DDerocche 13/03/26 [Tue 11:12am]



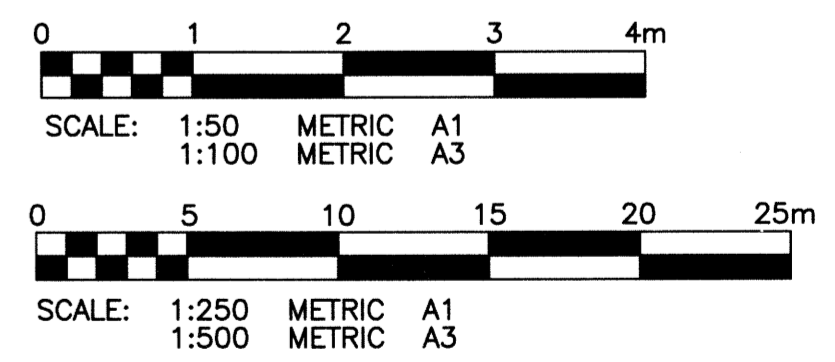
WARNING
 1. NOTIFY THE GAS COMPANY OF THE PROPOSED LOCATION OF EXCAVATION.
 2. TAKE PRECAUTION TO AVOID DAMAGE TO GAS COMPANY INSTALLATIONS.
 3. SEE PROVINCIAL REGULATION 140/92 FOR DETAILS.

METRIC
 WHOLE NUMBERS INDICATE MILLIMETRES
 DECIMALIZED NUMBERS INDICATE METRES

- CONSTRUCTION NOTES:**
1. EXPOSE WATERMAIN CONNECTIONS AND CONFIRM INVERTS PRIOR TO CONSTRUCTION.
 2. INSTALL WATERMAIN BY TRENCHLESS METHODS.
 3. ALL MATERIALS SHALL CONFORM TO THE CITY OF WINNIPEG STANDARD CONSTRUCTION SPECIFICATIONS.
 4. MINIMUM COVER TO TOP OF PROPOSED WATERMAIN SHALL BE 2.5m FROM STREET CENTERLINE.
 5. INSTALL ALL HYDRANTS WITH FLANGE ELEVATION 50mm TO 150mm ABOVE FINISHED GRADE.
 6. REPLACE ALL EXISTING LEAD SERVICES FROM THE PROPOSED WATERMAIN TO PROPERTY LINE.
 7. NOTIFY ALL AFFECTED RESIDENTS/BUSINESSES 24 HOURS IN ADVANCE OF ANY WATER SHUTDOWN OR DISRUPTION OF SERVICES.
 8. LOCATION OF WATER SERVICES SHOWN ON DRAWING ARE APPROXIMATE. THE CONTRACTOR SHALL FIELD LOCATE ALL WATER SERVICES PRIOR TO CONSTRUCTION.
 9. BACKFILL UNDER OR WITHIN 1.0m OF PAVEMENTS, (INCLUDING SIDEWALKS) SHALL BE CLASS 3 BACKFILL EXCEPT AS NOTED. BACKFILL IN BOULEVARDS SHALL BE CLASS 5 BACKFILL.
 10. WATER VALVES TO BE CLOCKWISE TO CLOSE (BLACK OPERATING NUT)
 11. THE CONTRACTOR SHALL DETERMINE ON-SITE TO WHICH WATERMAIN (150 OR 300) EACH WATER SERVICE, ALONG THE ALIGNMENT OF THE 150 WATERMAIN BEING ABANDONED, IS CONNECTED. IF WATER SERVICES ARE CONNECTED TO THE 150 WATERMAIN, THE CONTRACTOR SHALL RELOCATE THE CONNECTION TO THE 300 WATERMAIN.
 12. THE CONTRACTOR SHALL REMOVE ALL VALVE BOXES AND CASINGS ALONG THE 150 AC WATERMAIN TO BE ABANDONED AND PATCH RESULTANT HOLE.



CURB STOP				CORPORATION STOP	
ADDRESS TYPE/NATURE	DISTANCE (METERS)	SIZE(mm) & TYPE	SHORT & LONG MEASUREMENT (METER)	CORPORATION LOCATION	REMARKS
296 ST ANNE'S RD RESIDENTIAL	BLDG 0.15	20 COPPER	8.50 LRB/L		MULTIPLE METERING
298 ST ANNE'S RD RESIDENTIAL					
300 ST ANNE'S RD RESIDENTIAL	BLDG	20 COPPER	SAME AS 310 ST ANNE'S		TAX STV4-22900-08 MULTIPLE METER
302 ST ANNE'S RD COMMERCIAL					METER IN 310 ST. ANNE'S MULTIPLE METER
304 ST ANNE'S RD COMMERCIAL	BLDG 13.70		30.50 LR S/COR HSE 36.00 FR S/CURB/L LENNOX		
306 ST ANNE'S RD COMMERCIAL	BLDG	20 COPPER	SAME S/C AS 310 ST ANNE'S		SEWER/75
310 ST ANNE'S RD COMMERCIAL	BLDG 0.15	50 COPPER	SEE REMARKS		50mm SERV OFF FERNWOOD VALVE 8.50 LRB/L FROM BLDG MULTI METER SEWER RENEW
313 ST ANNE'S RD COMMERCIAL		20 COPPER	4.60 WEBL		DR/WY/64
314 ST ANNE'S RD RESIDENTIAL		25 COPPER	13.70 NS OUTER EDGE OF SD/W		



APEGM
 Certificate of Authorization
 KGS Group
 No. 245

150_WM	150_WM	150_WM	HYDRO	150_WM	150_WM	150_WM
⊕	⊕	⊕	M.T.S.	⊕	⊕	⊕
⊕	⊕	⊕	CONCRETE	⊕	⊕	⊕
⊕	⊕	⊕	ASPHALT	⊕	⊕	⊕
⊕	⊕	⊕	SIDEWALK	⊕	⊕	⊕
⊕	⊕	⊕	PLANING	⊕	⊕	⊕
⊕	⊕	⊕	PROPERTY LINE	⊕	⊕	⊕
⊕	⊕	⊕	SURVEY BAR	⊕	⊕	⊕
⊕	⊕	⊕	GAS	⊕	⊕	⊕
⊕	⊕	⊕	CURB STOP	⊕	⊕	⊕
⊕	⊕	⊕	TEE	⊕	⊕	⊕
⊕	⊕	⊕	EXISTING	⊕	⊕	⊕
⊕	⊕	⊕	LEGEND-PLAN	⊕	⊕	⊕
⊕	⊕	⊕	PROPOSED	⊕	⊕	⊕
⊕	⊕	⊕	EXISTING	⊕	⊕	⊕
⊕	⊕	⊕	LEGEND-PROFILE	⊕	⊕	⊕
⊕	⊕	⊕	PROPOSED	⊕	⊕	⊕

LOCATION APPROVED UNDERGROUND STRUCTURES

SUPV. U/G STRUCTURES COMMITTEE DATE

NOTE:
 LOCATION OF UNDERGROUND STRUCTURES AS SHOWN ARE BASED ON THE BEST INFORMATION AVAILABLE BUT NO GUARANTEE IS GIVEN THAT ALL EXISTING UTILITIES ARE SHOWN OR THAT THE GIVEN LOCATIONS ARE EXACT. CONFIRMATION OF EXISTENCE AND EXACT LOCATION OF ALL SERVICES MUST BE OBTAINED FROM THE INDIVIDUAL UTILITIES BEFORE PROCEEDING WITH CONSTRUCTION.

B.M. KGS BASE ELEV. DWGS BASE ON C.S.R.S. NAD 83 SYSTEM UTM GRID.

KGS GROUP CONSULTING ENGINEERS

DESIGNED BY: BJM
 DRAWN BY: DMW
 CHECKED BY: RBO
 APPROVED BY: [Signature]
 HOR. SCALE: 1:250
 VERTICAL: 1:50
 ISSUED FOR CONSTRUCTION: 13/03/26
 NO. REVISIONS: [Blank]
 DATE: 13/01/16

ENGINEER'S SEAL: [Signature]

THE CITY OF WINNIPEG WATER AND WASTE DEPARTMENT

PROJECT TITLE: **2013 WATERMAIN RENEWALS CONTRACT 4**

ST ANNE'S ROAD FERMOR AVE TO HAVELOCK AVE STA 6+00 TO STA 7+00

SHEET OF: **05 OF 07**

COMPUTER FILE NAME: **FERMOR AVE PLOT**

CITY DRAWING NUMBER: **D-13163**

CONSULTANT DRAWING NO.: **13-0107-001**