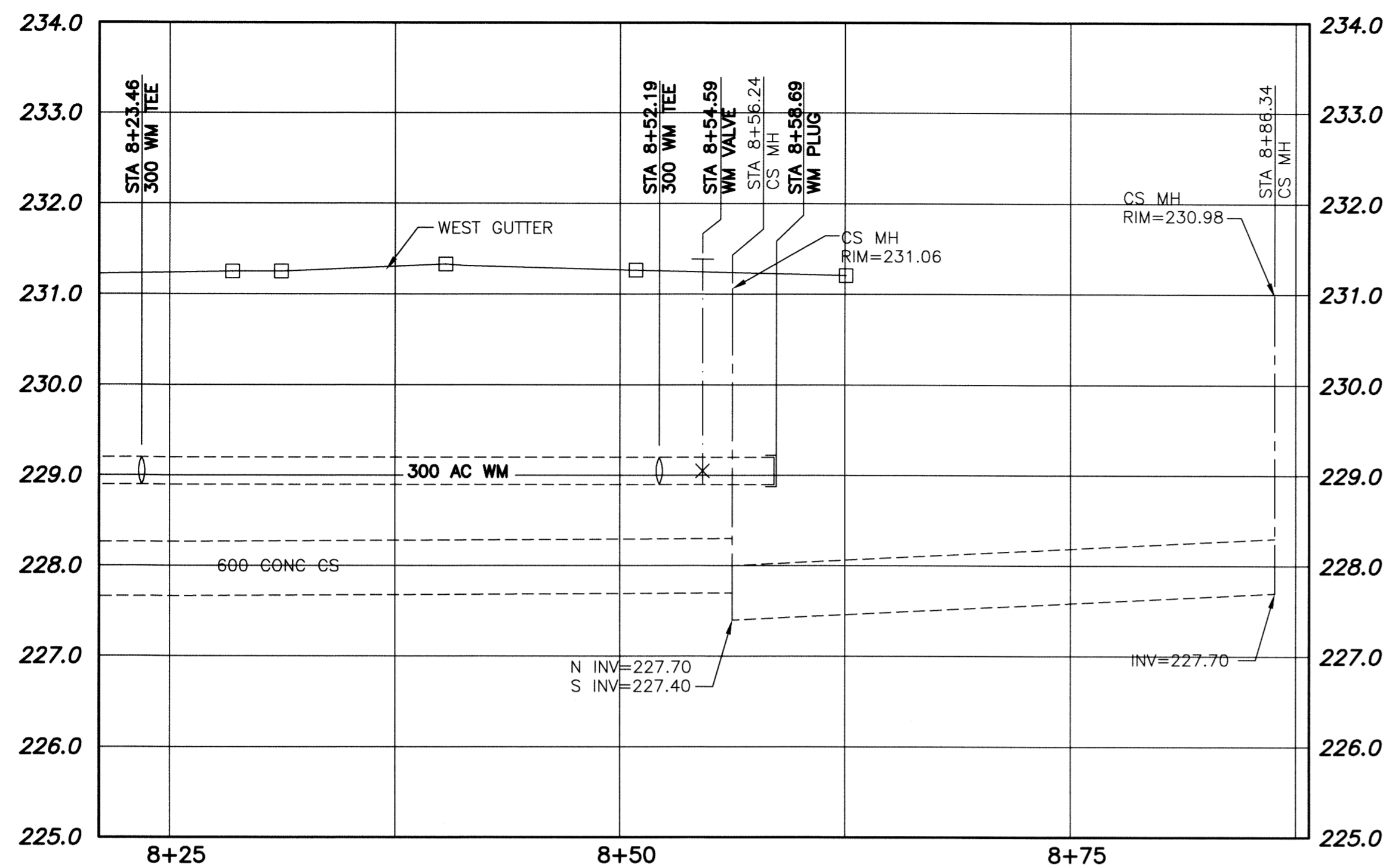


File Name: P:\Projects\2013\13-0107-001\DocControl\ob\issued\DWG\247-2013\_D-13165-Rev 0.dwg - Tab: D-13165-Plotted By: DDeroche 13/03/26 [Tue 11:11am]



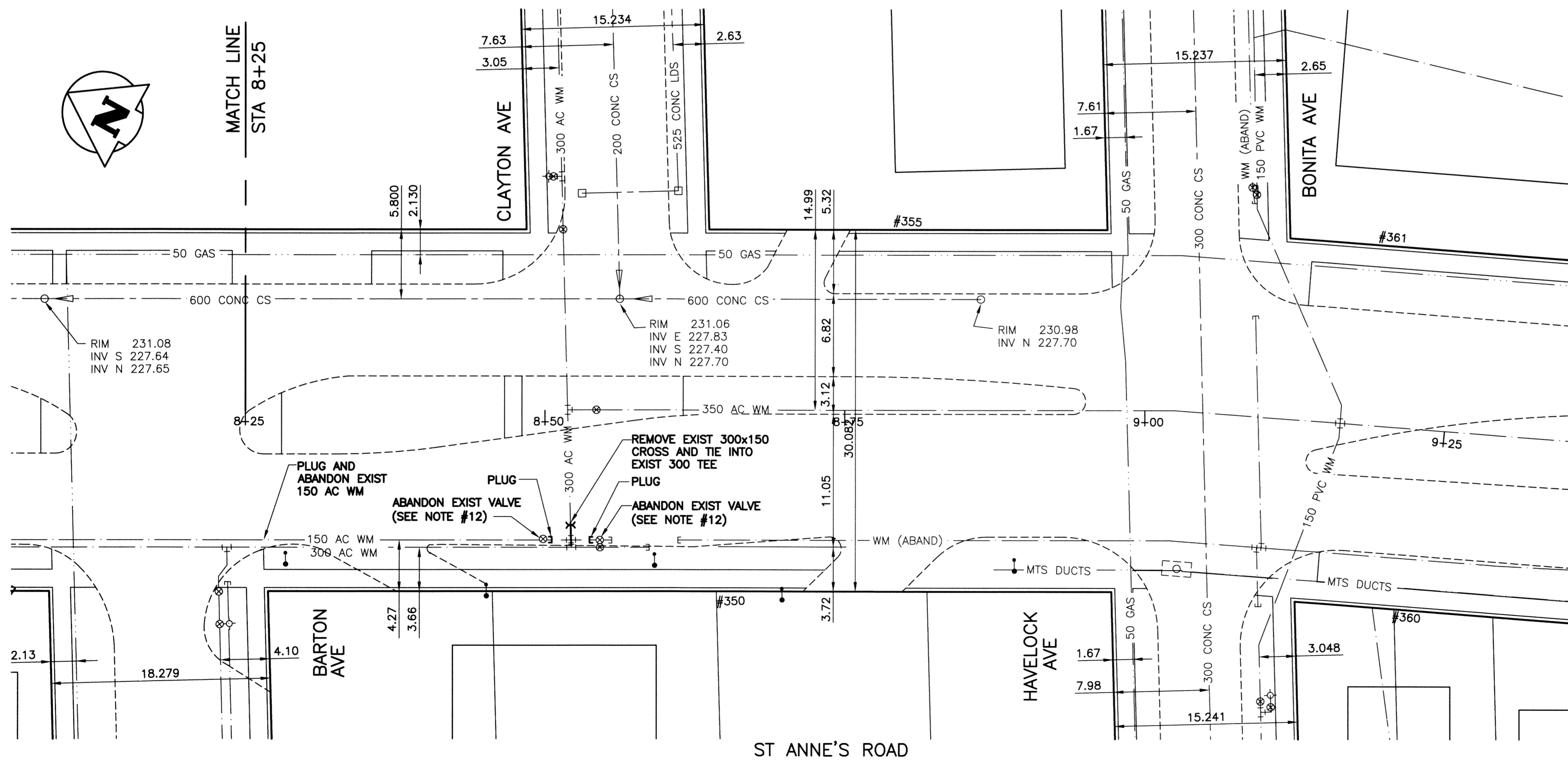
**WARNING**

1. NOTIFY THE GAS COMPANY OF THE PROPOSED LOCATION OF EXCAVATION.
2. TAKE PRECAUTION TO AVOID DAMAGE TO GAS COMPANY INSTALLATIONS.
3. SEE PROVINCIAL REGULATION 140/92 FOR DETAILS.

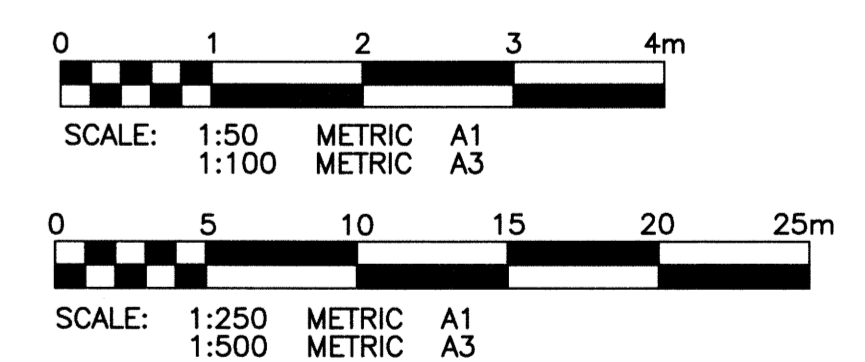
**METRIC**

WHOLE NUMBERS INDICATE MILLIMETRES  
DECIMALIZED NUMBERS INDICATE METRES

- CONSTRUCTION NOTES:**
1. EXPOSE WATERMAIN CONNECTIONS AND CONFIRM INVERTS PRIOR TO CONSTRUCTION.
  2. INSTALL WATERMAIN BY TRENCHLESS METHODS.
  3. ALL MATERIALS SHALL CONFORM TO THE CITY OF WINNIPEG STANDARD CONSTRUCTION SPECIFICATIONS.
  4. MINIMUM COVER TO TOP OF PROPOSED WATERMAIN SHALL BE 2.5m FROM STREET CENTERLINE.
  5. INSTALL ALL HYDRANTS WITH FLANGE ELEVATION 50mm TO 150mm ABOVE FINISHED GRADE.
  6. REPLACE ALL EXISTING LEAD SERVICES FROM THE PROPOSED WATERMAIN TO PROPERTY LINE.
  7. NOTIFY ALL AFFECTED RESIDENTS AND BUSINESSES 24 HOURS IN ADVANCE OF ANY WATER SHUTDOWN OR DISRUPTION OF SERVICES.
  8. LOCATION OF WATER SERVICES SHOWN ON DRAWING ARE APPROXIMATE. THE CONTRACTOR SHALL FIELD LOCATE ALL WATER SERVICES PRIOR TO CONSTRUCTION.
  9. BACKFILL UNDER OR WITHIN 1.0m OF PAVEMENTS, (INCLUDING SIDEWALKS) SHALL BE CLASS 3 BACKFILL EXCEPT AS NOTED. BACKFILL IN BOULEVARDS SHALL BE CLASS 5 BACKFILL.
  10. WATER VALVES TO BE CLOCKWISE TO CLOSE (BLACK OPERATING NUT)
  11. THE CONTRACTOR SHALL DETERMINE ON-SITE TO WHICH WATERMAIN (150 OR 300) EACH WATER SERVICE, ALONG THE ALIGNMENT OF THE 150 WATERMAIN BEING ABANDONED, IS CONNECTED. IF WATER SERVICES ARE CONNECTED TO THE 150 WATERMAIN, THE CONTRACTOR SHALL RELOCATE THE CONNECTION TO THE 300 WATERMAIN.
  12. THE CONTRACTOR SHALL REMOVE ALL VALVE BOXES AND CASINGS ALONG THE 150 AC WATERMAIN TO BE ABANDONED AND PATCH RESULTANT HOLE.



ADDRESS TYPE/NATURE	CURB STOP			CORPORATION STOP	
	DISTANCE (METERS)	SIZE(mm) & TYPE	SHORT & LONG MEASUREMENT (METER)	CORPORATION LOCATION	REMARKS
350 ST ANNE'S RD	50	0.49m W/EBL		9.40m W/HD @ 360	
COMMERCIAL	BLDG 12.10	COPPER	10.50m W/HD @ 360		SEP/04/85-WATER
355 ST ANNE'S RD	38	19.70m EWBL		1.20m E S/C	SEWER
RESIDENTIAL	BLDG 3.20	COPPER	27.70m W/HD @ 14 BONITA		JAN/02/90 REPLACE
360 ST ANNE'S RD	12	2.60m SNHL			
RESIDENTIAL		COPPER			
361 ST ANNE'S RD	25	2.10m W E/L BLDG		0.90m W S/C	DR/WY D499/SERVICE RENEW FR MAIN TO PROP
RESIDENTIAL		COPPER	33.50m W/HD @ 14 BONITA		SERVICE OFF OF



**APEGM**  
Certificate of Authorization  
KGS Group  
No. 245

EXISTING	LEGEND-PLAN	PROPOSED	EXISTING	LEGEND-PLAN	PROPOSED	EXISTING	LEGEND-PROFILE	PROPOSED
150 WM	WATERMAIN	150 WM	HYDRO	CONCRETE	300 LDS	WATERMAIN	WATERMAIN	150 WM
Hydrant	HYDRANT	Valve	M.T.S.	ASPHALT	250 WWS	Hydrant	HYDRANT, VALVE	300 LDS
300 LDS	LAND DRAINAGE SEWER	300 LDS	SIDEWALK	PLANING	250 WWS	300 LDS	LAND DRAINAGE SEWER	300 LDS
250 WWS	WASTE WATER SEWER	250 WWS	PROPERTY LINE	SURVEY BAR	250 WWS	250 WWS	WASTE WATER SEWER	250 WWS
Manhole	MANHOLE	Catch Basin	SURVEY BAR	GAS	250 WWS	250 WWS	CATCH BASIN	250 WWS
Curb Inlet	CURB INLET	Bend	GAS	CURB STOP	250 WWS	250 WWS	CURB INLET	250 WWS
Reducer	REDUCER	TEE	TEE	TEE	250 WWS	250 WWS	REDUCER	250 WWS

**LOCATION APPROVED UNDERGROUND STRUCTURES**

SUPV. U/G STRUCTURES COMMITTEE DATE

**NOTE:**  
LOCATION OF UNDERGROUND STRUCTURES AS SHOWN ARE BASED ON THE BEST INFORMATION AVAILABLE BUT NO GUARANTEE IS GIVEN THAT ALL EXISTING UTILITIES ARE SHOWN OR THAT THE GIVEN LOCATIONS ARE EXACT. CONFIRMATION OF EXISTENCE AND EXACT LOCATION OF ALL SERVICES MUST BE OBTAINED FROM THE INDIVIDUAL UTILITIES BEFORE PROCEEDING WITH CONSTRUCTION.

B.M. KGS BASE ELEV.	DWGS BASE ON C.S.R.S. NAD 83 SYSTEM UTM GRID.
NO. REVISIONS	DATE BY

**KGS GROUP CONSULTING ENGINEERS**

DESIGNED BY: **BJM** CHECKED BY: **RBO**

DRAWN BY: **DMW** APPROVED BY:

HOR. SCALE: 1:250  
VERTICAL: 1:50

ISSUED FOR CONSTRUCTION: 13/03/26 BY: [Signature]

NO. REVISIONS: [ ] DATE: 13/01/16 BY: [ ]

ENGINEER'S SEAL

**B.J. MIKOLAYENKO**  
Member 24688  
REGISTERED PROFESSIONAL ENGINEER

CONSULTANT DRAWING NO. **13-0107-001**

**THE CITY OF WINNIPEG WATER AND WASTE DEPARTMENT**

PROJECT TITLE: **2013 WATERMAIN RENEWALS CONTRACT 4**

ST ANNE'S ROAD  
FERMOR AVE TO HAVELOCK AVE  
STA 8+25 TO STA 9+25

SHEET **07** OF **07**

COMPUTER FILE NAME: **FERMOR AVE PLOT**

CITY DRAWING NUMBER: **D-13165**