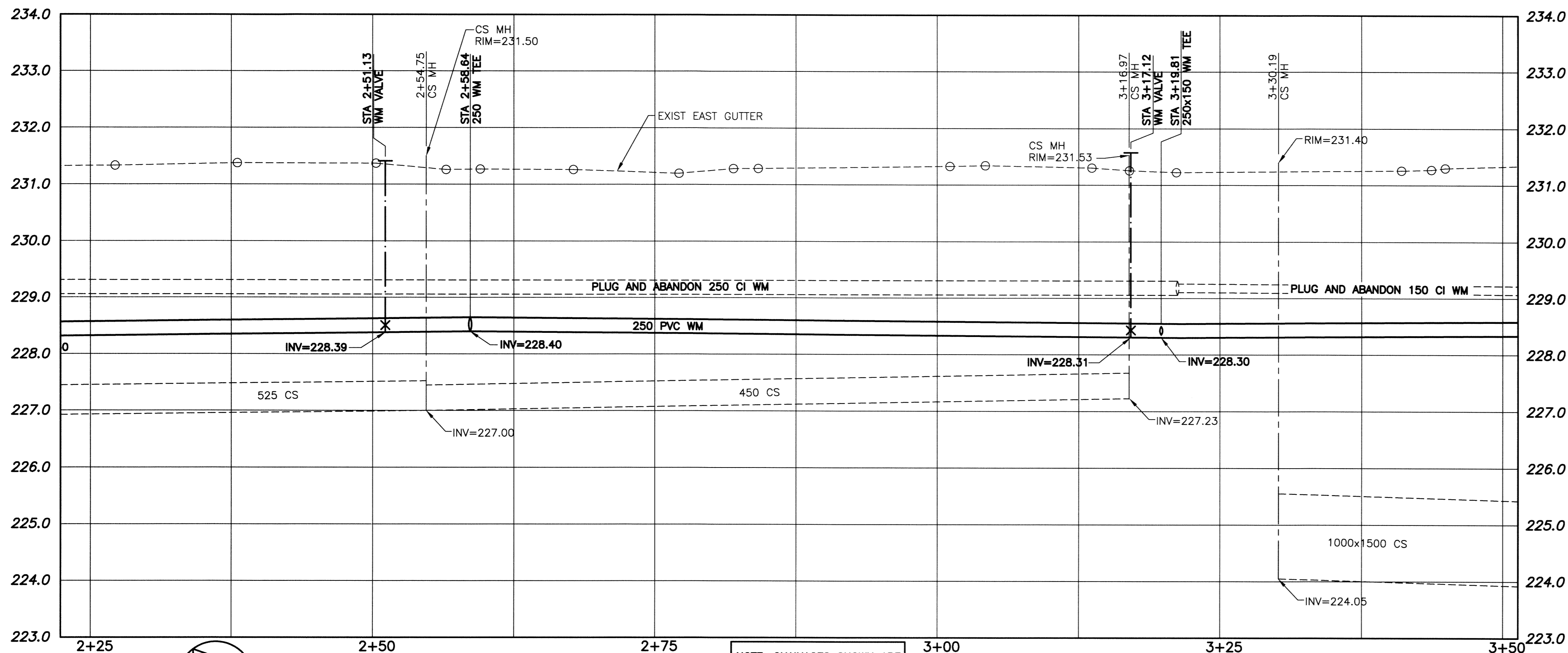
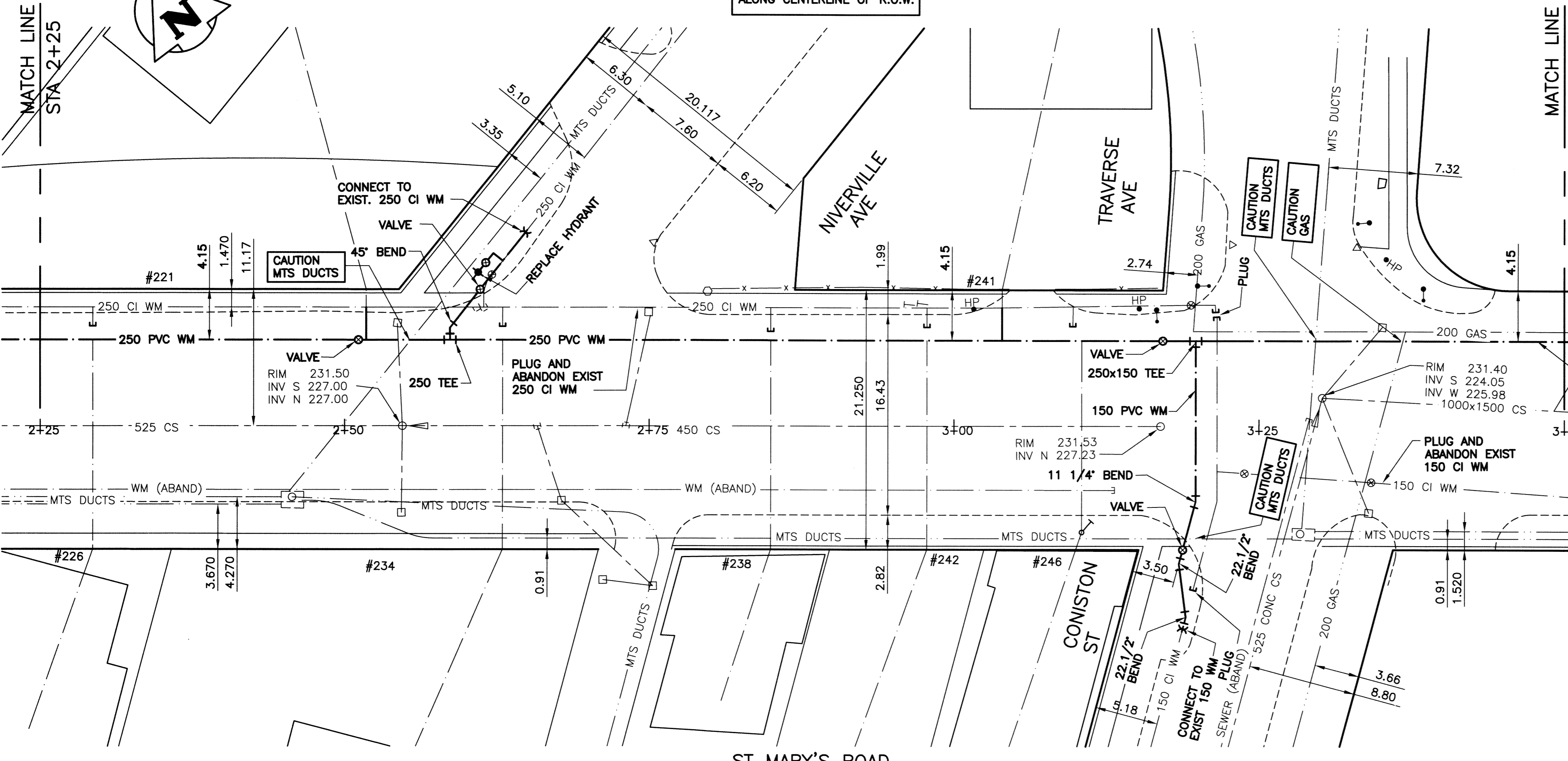


File Name: P:\Projects\2013\13-0107-001\Doc\Control\ToBeIssued\DWG\247-2013.D-13167-Rev 0.dwg - Tab: D-13167 Plotted By: Dberceh 13/03/26 [Tue 11:11am]



NOTE: CHAINAGES SHOWN ARE ALONG CENTERLINE OF R.O.W.



WARNING

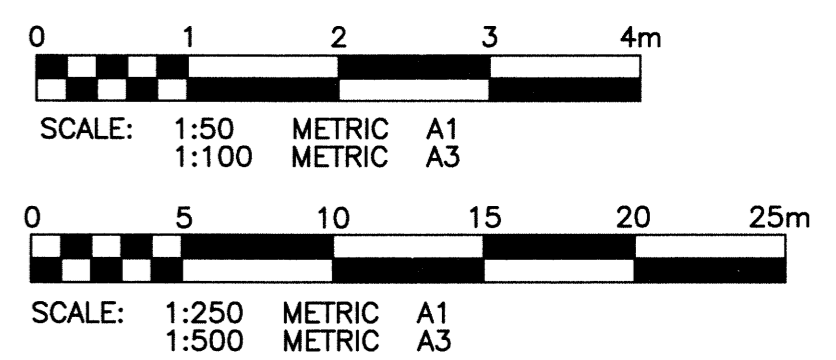
1. NOTIFY THE GAS COMPANY OF THE PROPOSED LOCATION OF EXCAVATION.
2. TAKE PRECAUTION TO AVOID DAMAGE TO GAS COMPANY INSTALLATIONS.
3. SEE PROVINCIAL REGULATION 140/92 FOR DETAILS.

METRIC

WHOLE NUMBERS INDICATE MILLIMETRES
DECIMALIZED NUMBERS INDICATE METRES

- CONSTRUCTION NOTES:**
1. EXPOSE WATERMAIN CONNECTIONS AND CONFIRM INVERTS PRIOR TO CONSTRUCTION.
 2. INSTALL WATERMAIN BY TRENCHLESS METHODS.
 3. ALL MATERIALS SHALL CONFORM TO THE CITY OF WINNIPEG STANDARD CONSTRUCTION SPECIFICATIONS.
 4. MINIMUM COVER TO TOP OF PROPOSED WATERMAIN SHALL BE 2.5m FROM STREET CENTERLINE.
 5. INSTALL ALL HYDRANTS WITH FLANGE ELEVATION 50mm TO 150mm ABOVE FINISHED GRADE.
 6. REPLACE ALL EXISTING LEAD SERVICES FROM THE PROPOSED WATERMAIN TO PROPERTY LINE.
 7. NOTIFY ALL AFFECTED RESIDENTS AND BUSINESSES 24 HOURS IN ADVANCE OF ANY WATER SHUTDOWN OR DISRUPTION OF SERVICES.
 8. LOCATION OF WATER SERVICES SHOWN ON DRAWING ARE APPROXIMATE. THE CONTRACTOR SHALL FIELD LOCATE ALL WATER SERVICES PRIOR TO CONSTRUCTION.
 9. BACKFILL UNDER OR WITHIN 1.0m OF PAVEMENTS, (INCLUDING SIDEWALKS) SHALL BE CLASS 3 BACKFILL EXCEPT AS NOTED. BACKFILL IN BOULEVARDS SHALL BE CLASS 5 BACKFILL.
 10. WATER VALVES TO BE CLOCKWISE TO CLOSE (BLACK OPERATING NUT)

| CURB STOP | | | | CORPORATION STOP | |
|---------------------|-------------------|-----------------|----------------------------------|----------------------|---|
| ADDRESS TYPE/NATURE | DISTANCE (METERS) | SIZE(mm) & TYPE | SHORT & LONG MEASUREMENT (METER) | CORPORATION LOCATION | REMARKS |
| 226 ST MARY'S RD | 20 | 20 | 4.6m RL COR OF HSE | | |
| COMMERCIAL | BLDG 3.3 | COPPER | | | |
| 234 ST MARY'S RD | 20 | 20 | 7.3m RL COR OF HSE | | |
| COMMERCIAL | BLDG 23.5 | COPPER | | | |
| 238 ST MARY'S RD | 20 | 20 | 4.0m RL COR OF HSE | | SEWER/46 |
| COMMERCIAL | BLDG 1.4 | COPPER | | | |
| 241 ST MARY'S RD | 20 | 20 | 2.7m RL COR OF HSE | | SEWER/61 DR/WY A179 21 - BILLED FOR BUR |
| COMMERCIAL | BLDG 14.5 | COPPER | | | ST METER FEB 27/89 SA63102-ADDIT |
| 242 ST MARY'S RD | 20 | 20 | 2.1m RL COR OF HSE | | NOTHING ON KARDEX |
| COMMERCIAL | BLDG 11.2 | | | | |
| 248 ST MARY'S RD | 20 | 20 | | 1.0 S OF S/C | SEWER/49 |
| COMMERCIAL | | COPPER | | | |
| 249 ST MARY'S RD | 25 | 25 | 4.6m S OF N/L BLDG | 1.0 S OF S/C | SEWER/49 NEW 250 PVC LDS JCT 40.2 N OF MH |
| COMMERCIAL | PROPERTY | COPPER | 20.7m S OF P/L CONISTON | | #267 ST MARY'S P/L LOC 15.5 OF |
| 256 ST MARY'S RD | 20 | 20 | 0.9m L L COR BLDG | | SEWER/47 SEE PERMIT 10188 25mm WATER & |
| COMMERCIAL | CURB 4.0 | COPPER | | | REUSE SEWER OCT 17/88 |
| 256 ST MARY'S RD | | | 0.9m L/L | | |
| COMMERCIAL | BLDG 22.2 | | 2.7m CURB | | |



| 150 WM | WATERMAIN | 150 WM | HYDRO | 150 WM | WATERMAIN | 150 WM |
|--------|---------------------|--------|---------------|--------|---------------------|--------|
| ⊕ | HYDRANT | ⊕ | M.T.S. | ⊕ | HYDRANT, VALVE | ⊕ |
| ⊕ | VALVE | ⊕ | CONCRETE | ⊕ | LAND DRAINAGE SEWER | ⊕ |
| ⊕ | LAND DRAINAGE SEWER | ⊕ | ASPHALT | ⊕ | WASTE WATER SEWER | ⊕ |
| ⊕ | WASTE WATER SEWER | ⊕ | SIDEWALK | ⊕ | C PROFILE | ⊕ |
| ⊕ | MANHOLE | ⊕ | PLANNING | ⊕ | NORTH/WEST GUTTER | ⊕ |
| ⊕ | CATCH BASIN | ⊕ | PROPERTY LINE | ⊕ | SOUTH/EAST GUTTER | ⊕ |
| ⊕ | CURB INLET | ⊕ | SURVEY BAR | ⊕ | N/W, S/E R'S | ⊕ |
| ⊕ | BEND | ⊕ | GAS | ⊕ | N/W, S/E TOP/CURB | ⊕ |
| ⊕ | REDUCER | ⊕ | CURB STOP | ⊕ | | ⊕ |
| ⊕ | TEE | ⊕ | TEE | ⊕ | | ⊕ |
| ⊕ | LEGEND-PLAN | ⊕ | LEGEND-PLAN | ⊕ | LEGEND-PROFILE | ⊕ |

LOCATION APPROVED UNDERGROUND STRUCTURES

SUPV. U/G STRUCTURES COMMITTEE DATE

NOTE:
LOCATION OF UNDERGROUND STRUCTURES AS SHOWN ARE BASED ON THE BEST INFORMATION AVAILABLE BUT NO GUARANTEE IS GIVEN THAT ALL EXISTING UTILITIES ARE SHOWN OR THAT THE GIVEN LOCATIONS ARE EXACT CONFIRMATION OF EXISTENCE AND EXACT LOCATION OF ALL SERVICES MUST BE OBTAINED FROM THE INDIVIDUAL UTILITIES BEFORE PROCEEDING WITH CONSTRUCTION.

| B.M. KGS BASE ELEV. | DWGS BASE ON C.S.R.S. NAD 83 SYSTEM UTM GRID. |
|---------------------|---|
| 0 | ISSUED FOR CONSTRUCTION 13/03/26 |
| NO. | REVISIONS |

| | |
|--|----------------------------|
| KGS GROUP CONSULTING ENGINEERS | |
| DESIGNED BY: BJM | CHECKED BY: RBO |
| DRAWN BY: DMW | APPROVED BY: |
| HOR. SCALE: 1:250 | RELEASED FOR CONSTRUCTION: |
| VERTICAL: 1:50 | DATE: 13/01/16 |

ENGINEER'S SEAL

B.J. MIKOLAYENKO
Member 24688
REGISTERED PROFESSIONAL ENGINEER

CONSULTANT DRAWING NO. **13-0107-001**

THE CITY OF WINNIPEG
WATER AND WASTE DEPARTMENT

PROJECT TITLE
2013 WATERMAIN RENEWALS CONTRACT 4

ST MARY'S ROAD
HIGHFIELD STREET TO METCALFE AVENUE
STA 2+25 TO STA 3+50

SHEET OF
02 OF **05**

COMPUTER FILE NAME
ST MARYS_2 PLOT

CITY DRAWING NUMBER
D-13167