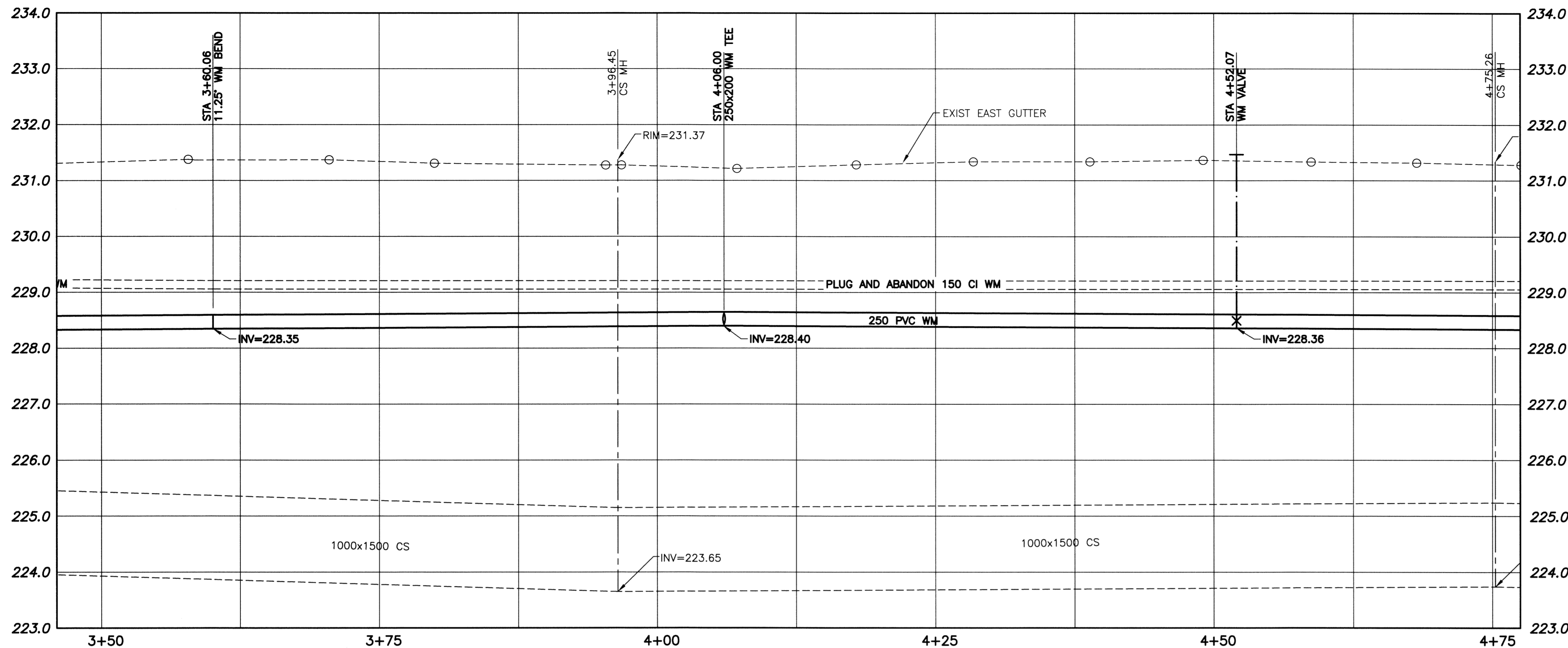


File Name: P:\Projects\2013\13-0107-001\Dec.Control\ToBeReleased\DWG\247-2013_D-13168-Rev.0.dwg - Tab: D-13168 Plotted By: Dderoche 13/03/26 [Tue 11:10am]



WARNING

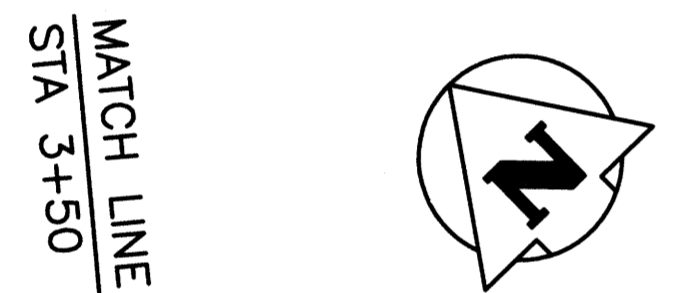
1. NOTIFY THE GAS COMPANY OF THE PROPOSED LOCATION OF EXCAVATION.
2. TAKE PRECAUTION TO AVOID DAMAGE TO GAS COMPANY INSTALLATIONS.
3. SEE PROVINCIAL REGULATION 140/92 FOR DETAILS.

METRIC

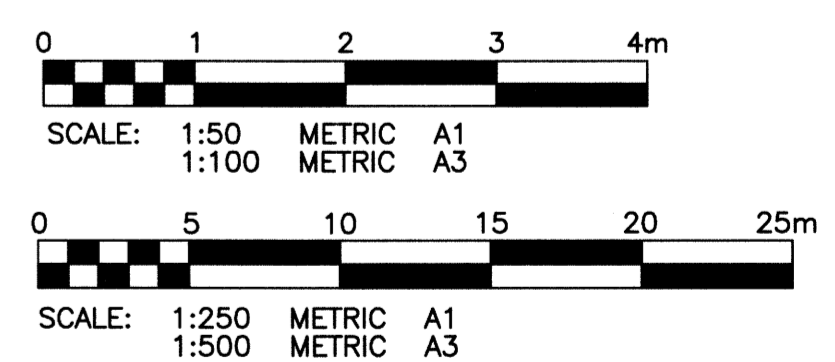
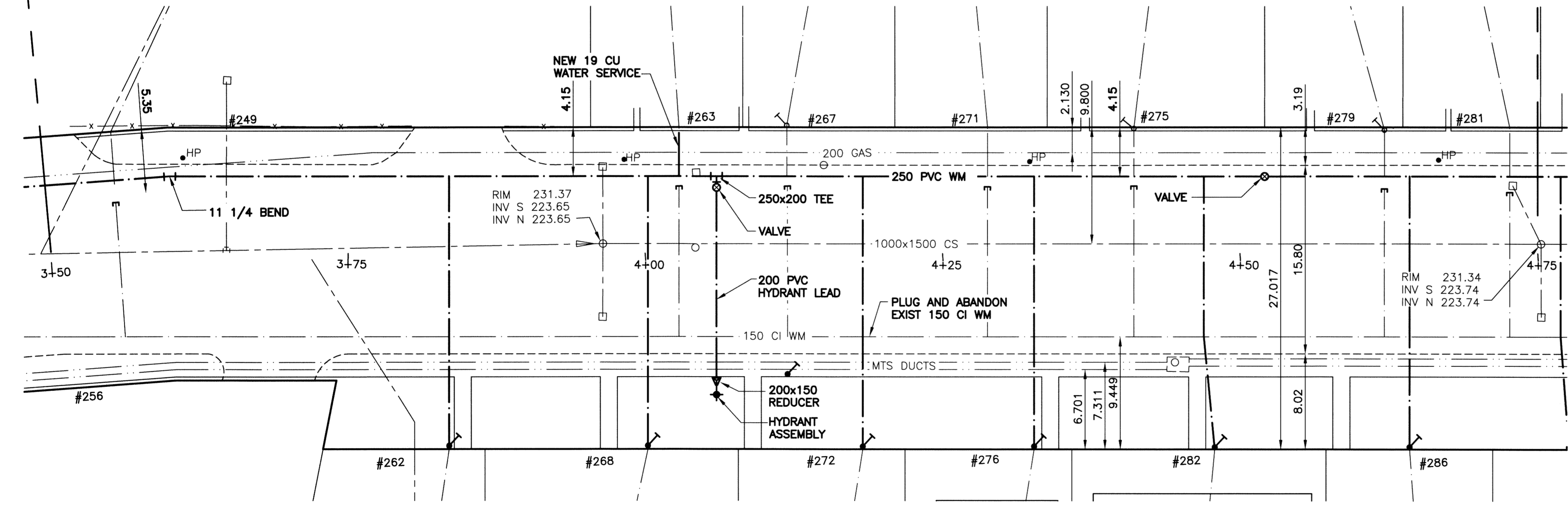
WHOLE NUMBERS INDICATE MILLIMETRES
DECIMALIZED NUMBERS INDICATE METRES

- CONSTRUCTION NOTES:**
1. EXPOSE WATERMAIN CONNECTIONS AND CONFIRM INVERTS PRIOR TO CONSTRUCTION.
 2. INSTALL WATERMAIN BY TRENCHLESS METHODS.
 3. ALL MATERIALS SHALL CONFORM TO THE CITY OF WINNIPEG STANDARD CONSTRUCTION SPECIFICATIONS.
 4. MINIMUM COVER TO TOP OF PROPOSED WATERMAIN SHALL BE 2.5m FROM STREET CENTERLINE.
 5. INSTALL ALL HYDRANTS WITH FLANGE ELEVATION 50mm TO 150mm ABOVE FINISHED GRADE.
 6. REPLACE ALL EXISTING LEAD SERVICES FROM THE PROPOSED WATERMAIN TO PROPERTY LINE.
 7. NOTIFY ALL AFFECTED RESIDENTS AND BUSINESSES 24 HOURS IN ADVANCE OF ANY WATER SHUTDOWN OR DISRUPTION OF SERVICES.
 8. LOCATION OF WATER SERVICES SHOWN ON DRAWING ARE APPROXIMATE. THE CONTRACTOR SHALL FIELD LOCATE ALL WATER SERVICES PRIOR TO CONSTRUCTION.
 9. BACKFILL UNDER OR WITHIN 1.0m OF PAVEMENTS, (INCLUDING SIDEWALKS) SHALL BE CLASS 3 BACKFILL EXCEPT AS NOTED. BACKFILL IN BOULEVARDS SHALL BE CLASS 5 BACKFILL.
 10. WATER VALVES TO BE CLOCKWISE TO CLOSE (BLACK OPERATING NUT)

CURB STOP				CORPORATION STOP	
ADDRESS TYPE/NATURE	DISTANCE (METERS)	SIZE(mm) & TYPE	SHORT & LONG MEASUREMENT (METER)	CORPORATION LOCATION	REMARKS
259 ST MARY'S RD		20	1.5m N OF COR HSE		0.9m FROM WALK
NOT IN USE		COPPER			
262 ST MARY'S RD		25	0.61m R L COR HSE		SEWER/48
RESIDENTIAL	BLDG 11.9	COPPER			
263 ST MARY'S RD		20	1.5m L R COR HSE		SEWER/48 HOT WATER THAWING UNIT 04/96 AND 04/97 (SERVICE FROZEN)
RESIDENTIAL	BLDG 7.6	COPPER			
267 ST MARY'S RD		20	2.1m R L COR HSE		SEWER/48
RESIDENTIAL	BLDG 7.5	COPPER			
268 ST MARY'S RD		25	6.9m R L COR HSE		SEWER/48
RESIDENTIAL	BLDG 12.5	COPPER			
271 ST MARY'S RD		20	2.1m S S LINE HSE		SEWER/48
RESIDENTIAL	BLDG 9.1	COPPER			
272 ST MARY'S RD		25	1.8m R L COR BLDG		SEWER/48 TAX-ST B-916880-06
RESIDENTIAL	BLDG 11.3	COPPER			
275 ST MARY'S RD		20	3.8m SNHL	2.7m S OF CORP	SEWER/48
RESIDENTIAL	BLDG 7.6	COPPER			SERVICE LOWERED
276 ST MARY'S RD		25	0.61 R L COR BLDG		SEWER/48
RESIDENTIAL	BLDG 11.7	COPPER			
279 ST MARY'S RD		20	2.4m R R COR HSE		SEWER/47
RESIDENTIAL	BLDG 9.1	COPPER			
281 ST MARY'S RD		20	0.3m R R COR HSE		SEWER/47
RESIDENTIAL	BLDG 7.9	COPPER			
282 ST MARY'S RD		25	8.8m N/SHL	0.9m N OF S/C	SEWER/48**MAY/99-BOX VACTORED
RESIDENTIAL	BLDG 11.9	COPPER			
285 ST MARY'S RD		20	2.4 S OF N	OPP S.C	SEWER/47, 96/08/30-SERVICE RENEWAL
RESIDENTIAL	PROPERTY 0.3	COPPER	8.8m OUT		
286 ST MARY'S RD		25	3.7m LR COR OF BLDG		SEWER/48
RESIDENTIAL	BLDG 10.7	COPPER			
288 ST MARY'S RD		20	3.3m R L COR HSE		SEWER/47
RESIDENTIAL	BLDG 7.9	COPPER			



NOTE: CHAINAGES SHOWN ARE ALONG CENTERLINE OF R.O.W.



ST MARY'S ROAD

EXISTING	LEGEND-PLAN	PROPOSED	EXISTING	LEGEND-PLAN	PROPOSED	EXISTING	LEGEND-PROFILE	PROPOSED
150 WM	WATERMAIN	150 WM	HYDRO	HYDRO	150 WM	WATERMAIN	150 WM	WATERMAIN
300 LBS	HYDRANT	300 LBS	M.T.S.	M.T.S.	300 LBS	HYDRANT, VALVE	300 LBS	HYDRANT, VALVE
250 WWS	VALVE	250 WWS	CONCRETE	CONCRETE	250 WWS	LAND DRAINAGE SEWER	250 WWS	LAND DRAINAGE SEWER
	LAND DRAINAGE SEWER		ASPHALT	ASPHALT		WASTE WATER SEWER		WASTE WATER SEWER
	WASTE WATER SEWER		SIDEWALK	SIDEWALK		C PROFILE		C PROFILE
	MANHOLE		PLANING	PLANING		NORTH/WEST GUTTER		NORTH/WEST GUTTER
	CATCH BASIN		PROPERTY LINE	PROPERTY LINE		SOUTH/EAST GUTTER		SOUTH/EAST GUTTER
	CURB INLET		SURVEY BAR	SURVEY BAR		N/W, S/E R'S		N/W, S/E R'S
	BEND		GAS	GAS		N/W, S/E TOP/CURB		N/W, S/E TOP/CURB
	REDUCER		CURB STOP	CURB STOP				
	LEGEND-PLAN		TEE	TEE				

LOCATION APPROVED UNDERGROUND STRUCTURES

SUPV. U/G STRUCTURES COMMITTEE DATE

NOTE: LOCATION OF UNDERGROUND STRUCTURES AS SHOWN ARE BASED ON THE BEST INFORMATION AVAILABLE BUT NO GUARANTEE IS GIVEN THAT ALL EXISTING UTILITIES ARE SHOWN OR THAT THE GIVEN LOCATIONS ARE EXACT. CONFIRMATION OF EXISTENCE AND EXACT LOCATION OF ALL SERVICES MUST BE OBTAINED FROM THE INDIVIDUAL UTILITIES BEFORE PROCEEDING WITH CONSTRUCTION.

B.M. KGS BASE ELEV. DWGS BASE ON C.S.R.S. NAD 83 SYSTEM UTM GRID.

KGS GROUP CONSULTING ENGINEERS

DESIGNED BY: BJM CHECKED BY: RBO
DRAWN BY: DMW APPROVED BY:

HOR. SCALE: 1:250
VERTICAL: 1:50

ISSUED FOR CONSTRUCTION: 13/03/26
NO. REVISIONS: DATE BY

DATE: 13/01/16

ENGINEER'S SEAL: B.J. NIKOLAYENKO, Member 24688, MARCH 26/2013

CONSULTANT DRAWING NO. 13-0107-001

THE CITY OF WINNIPEG WATER AND WASTE DEPARTMENT

PROJECT TITLE: 2013 WATERMAIN RENEWALS CONTRACT 4

ST MARY'S ROAD HIGHFIELD STREET TO METCALFE AVENUE STA 3+50 TO STA 4+75

SHEET 03 OF 05
COMPUTER FILE NAME: ST MARYS_2 PLOT
CITY DRAWING NUMBER: D-13168