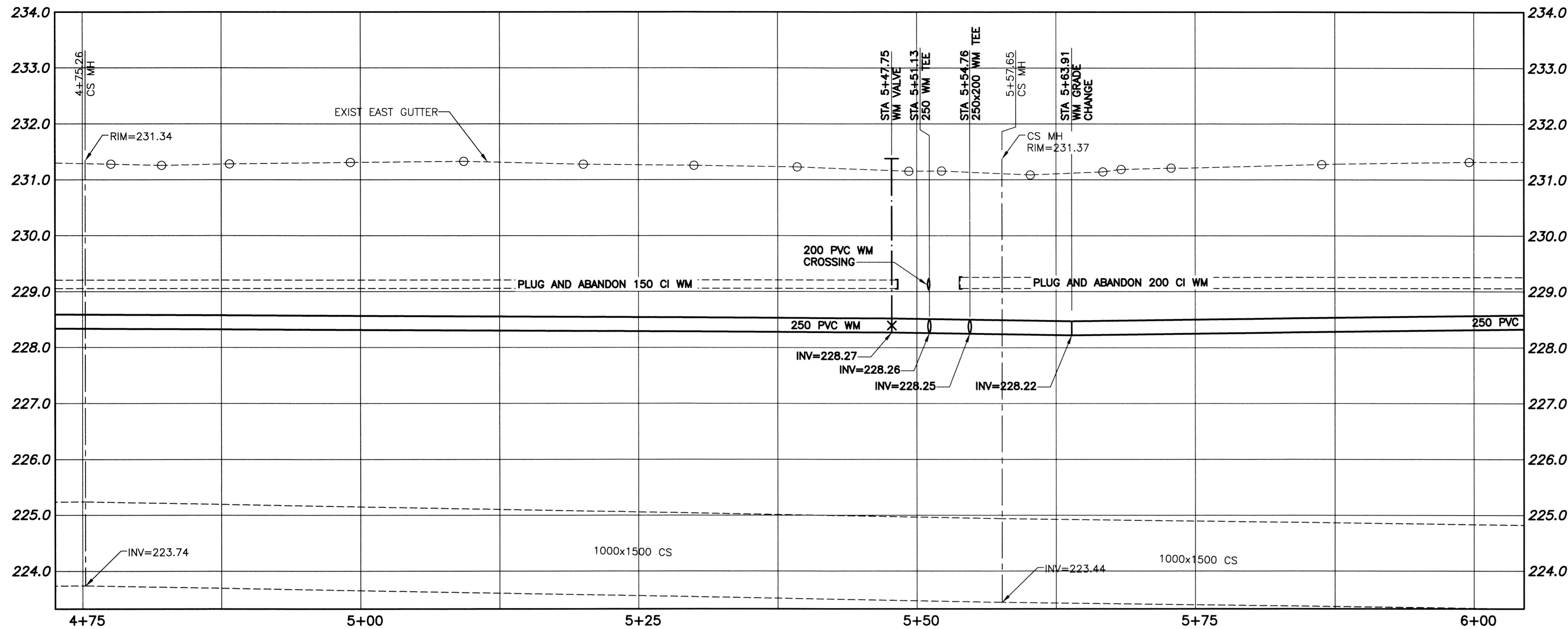


File Name: P:\Projects\2013\13-0107-001\Doc.Control\ToBeIssued\DWG\247-2013-D-13169-Rev 0.dwg - Tab: D-13169-Rev 0.dwg - Tab: D-13169-Rev 0.dwg [Tue 11:10am]



**WARNING**

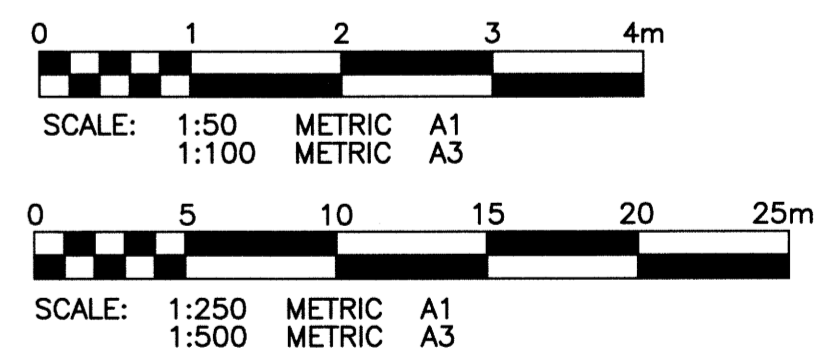
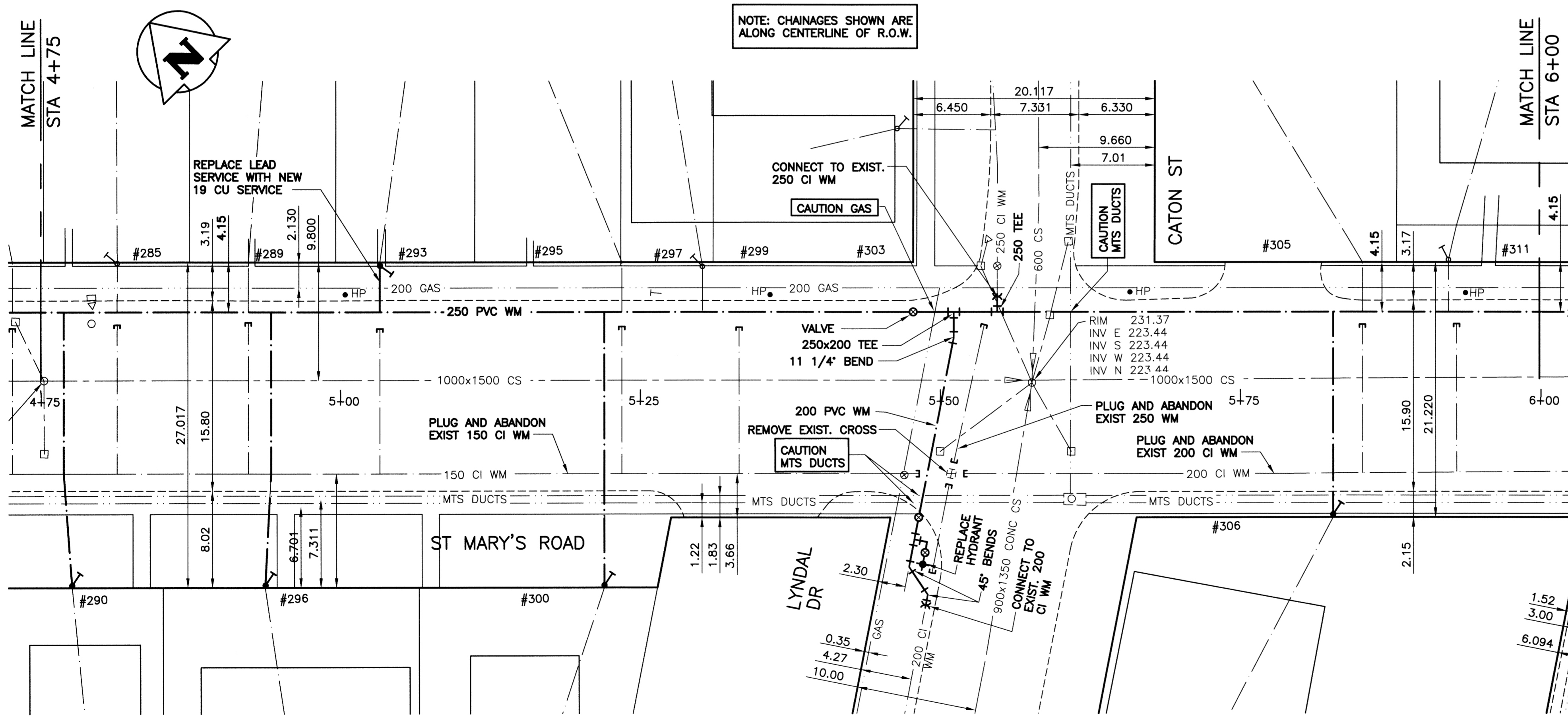
1. NOTIFY THE GAS COMPANY OF THE PROPOSED LOCATION OF EXCAVATION.
2. TAKE PRECAUTION TO AVOID DAMAGE TO GAS COMPANY INSTALLATIONS.
3. SEE PROVINCIAL REGULATION 140/92 FOR DETAILS.

**METRIC**

WHOLE NUMBERS INDICATE MILLIMETRES  
DECIMALIZED NUMBERS INDICATE METRES

- CONSTRUCTION NOTES:**
1. EXPOSE WATERMAIN CONNECTIONS AND CONFIRM INVERTS PRIOR TO CONSTRUCTION.
  2. INSTALL WATERMAIN BY TRENCHLESS METHODS.
  3. ALL MATERIALS SHALL CONFORM TO THE CITY OF WINNIPEG STANDARD CONSTRUCTION SPECIFICATIONS.
  4. MINIMUM COVER TO TOP OF PROPOSED WATERMAIN SHALL BE 2.5m FROM STREET CENTERLINE.
  5. INSTALL ALL HYDRANTS WITH FLANGE ELEVATION 50mm TO 150mm ABOVE FINISHED GRADE.
  6. REPLACE ALL EXISTING LEAD SERVICES FROM THE PROPOSED WATERMAIN TO PROPERTY LINE.
  7. NOTIFY ALL AFFECTED RESIDENTS AND BUSINESSES 24 HOURS IN ADVANCE OF ANY WATER SHUTDOWN OR DISRUPTION OF SERVICES.
  8. LOCATION OF WATER SERVICES SHOWN ON DRAWING ARE APPROXIMATE. THE CONTRACTOR SHALL FIELD LOCATE ALL WATER SERVICES PRIOR TO CONSTRUCTION.
  9. BACKFILL UNDER OR WITHIN 1.0m OF PAVEMENTS, (INCLUDING SIDEWALKS) SHALL BE CLASS 3 BACKFILL EXCEPT AS NOTED. BACKFILL IN BOULEVARDS SHALL BE CLASS 5 BACKFILL.
  10. WATER VALVES TO BE CLOCKWISE TO CLOSE (BLACK OPERATING NUT)

CURB STOP				CORPORATION STOP	
ADDRESS TYPE / NATURE	DISTANCE (METERS)	SIZE (mm) & TYPE	SHORT & LONG MEASUREMENT (METER)	CORPORATION LOCATION	REMARKS
285 ST MARY'S RD RESIDENTIAL	20	25	2.4 S OF N	OPP S.C	SEWER/47. 96/08/30-SERVICE RENEWAL
286 ST MARY'S RD RESIDENTIAL	PROPERTY 0.3	COPPER	8.8m OUT		SEWER/48
287 ST MARY'S RD RESIDENTIAL	BLDG 10.7	COPPER	3.7m LR COR OF BLDG		SEWER/47
288 ST MARY'S RD RESIDENTIAL	BLDG 7.9	COPPER	3.3m R L COR HSE		SEWER/49
289 ST MARY'S RD RESIDENTIAL	BLDG 10.5	COPPER	4.3m R L COR BLDG 0.3 RF WALL		SEWER/47
290 ST MARY'S RD RESIDENTIAL	BLDG 10.5	COPPER	2.1m R L COR HSE		SEWER/47
291 ST MARY'S RD RESIDENTIAL	BLDG 7.6	LEAD	2.1m R R COR HSE		SEWER/47
292 ST MARY'S RD RESIDENTIAL	BLDG 9.0	COPPER	2.1m R R COR HSE		SEWER/49
293 ST MARY'S RD RESIDENTIAL	BLDG 11.5	COPPER	7.3m L R COR HSE 1 OFF WM		SEWER/61
294 ST MARY'S RD COMMERCIAL	BLDG 9.0	COPPER	2.1m R R COR OF HSE		SEWER/49**FEB/02-RENEWED SERVICE BOX
295 ST MARY'S RD RESIDENTIAL	BLDG 10.7	COPPER	3.7m S/SBL		SEWER/46***SERVICE OFF CATON***
296 ST MARY'S RD COMMERCIAL	BLDG 1.2	COPPER	1.2m W/EHL	OPP S.C	SEWER/24 FROZEN ON PROP SHOULD READ JAN13/03 JAN25/03 THAWED
297 ST MARY'S RD RESIDENTIAL	BLDG 12.4	COPPER	6.8m R/L	15.8m W OF HYD	SEWER/29 DR/WY A17907
298 ST MARY'S RD RESIDENTIAL	BLDG 0.3	COPPER	2.6m LR COR OF BLDG		SEWER/45
299 ST MARY'S RD COMMERCIAL	BLDG 0.3	COPPER	18.9m EEL OF ST MARY'S		SEWER/29 DR/WY A17907
300 ST MARY'S RD COMMERCIAL	BLDG 5.8	COPPER	3.6m R L COR HSE		SEWER/49 TAX-ST B-817840-06
301 ST MARY'S RD RESIDENTIAL	BLDG 8.6	COPPER	2.7m R L COR HSE		



**APEGM**  
Certificate of Authorization  
KGS Group  
No. 245

150 WM	300 LDS	250 WWS	150 WM	300 LDS	250 WWS	150 WM	300 LDS	250 WWS
WATERMAIN	LAND DRAINAGE SEWER	WASTE WATER SEWER	HYDRANT	LAND DRAINAGE SEWER	WASTE WATER SEWER	WATERMAIN	LAND DRAINAGE SEWER	WASTE WATER SEWER
HYDRANT	WASTE WATER SEWER	MANHOLE	CONCRETE	WASTE WATER SEWER	MANHOLE	HYDRANT, VALVE	WASTE WATER SEWER	MANHOLE
VALVE	MANHOLE	CATCH BASIN	ASPHALT	WASTE WATER SEWER	CATCH BASIN	CONCRETE	WASTE WATER SEWER	MANHOLE
CURB INLET	REDUCER	BEND	SIDEWALK	WASTE WATER SEWER	REDUCER	ASPHALT	WASTE WATER SEWER	MANHOLE
REDUCER	EXISTING	LEGEND-PLAN	PROPERTY LINE	WASTE WATER SEWER	LEGEND-PLAN	ASPHALT	WASTE WATER SEWER	MANHOLE
EXISTING	LEGEND-PLAN	PROPOSED	SURVEY BAR	WASTE WATER SEWER	LEGEND-PLAN	ASPHALT	WASTE WATER SEWER	MANHOLE
LEGEND-PLAN	PROPOSED	EXISTING	GAS	WASTE WATER SEWER	LEGEND-PLAN	ASPHALT	WASTE WATER SEWER	MANHOLE
PROPOSED	EXISTING	LEGEND-PLAN	CURB STOP	WASTE WATER SEWER	LEGEND-PLAN	ASPHALT	WASTE WATER SEWER	MANHOLE
LEGEND-PLAN	PROPOSED	EXISTING	TEE	WASTE WATER SEWER	LEGEND-PLAN	ASPHALT	WASTE WATER SEWER	MANHOLE
PROPOSED	EXISTING	LEGEND-PLAN	EXISTING	WASTE WATER SEWER	LEGEND-PLAN	ASPHALT	WASTE WATER SEWER	MANHOLE
LEGEND-PLAN	PROPOSED	EXISTING	LEGEND-PROFILE	WASTE WATER SEWER	LEGEND-PLAN	ASPHALT	WASTE WATER SEWER	MANHOLE
PROPOSED	EXISTING	LEGEND-PLAN	PROPOSED	WASTE WATER SEWER	LEGEND-PLAN	ASPHALT	WASTE WATER SEWER	MANHOLE
LEGEND-PLAN	PROPOSED	EXISTING	LEGEND-PROFILE	WASTE WATER SEWER	LEGEND-PLAN	ASPHALT	WASTE WATER SEWER	MANHOLE
PROPOSED	EXISTING	LEGEND-PLAN	PROPOSED	WASTE WATER SEWER	LEGEND-PLAN	ASPHALT	WASTE WATER SEWER	MANHOLE

**LOCATION APPROVED UNDERGROUND STRUCTURES**

SUP. U/G STRUCTURES COMMITTEE DATE

NOTE: LOCATION OF UNDERGROUND STRUCTURES AS SHOWN ARE BASED ON THE BEST INFORMATION AVAILABLE BUT NO GUARANTEE IS GIVEN THAT ALL EXISTING UTILITIES ARE SHOWN OR THAT THE GIVEN LOCATIONS ARE EXACT. CONFIRMATION OF EXISTENCE AND EXACT LOCATION OF ALL SERVICES MUST BE OBTAINED FROM THE INDIVIDUAL UTILITIES BEFORE PROCEEDING WITH CONSTRUCTION.

B.M. KGS BASE ELEV. DWGS BASE ON C.S.R.S. NAD 83 SYSTEM UTM GRID.

**KGS GROUP CONSULTING ENGINEERS**

DESIGNED BY: BJM  
DRAWN BY: DMW

CHECKED BY: RBO  
APPROVED BY:

HOR. SCALE: 1:250  
VERTICAL: 1:50

ISSUED FOR CONSTRUCTION: 13/03/2013  
NO. REVISIONS: 1  
DATE: 13/01/16

ENGINEER'S SEAL

**PROVINCE OF MANITOBA**  
B.J. MIKOLAYENKO  
Member 24888  
REGISTERED PROFESSIONAL ENGINEER

MARCH 26 2013

CONSULTANT DRAWING NO. 13-0107-001

**THE CITY OF WINNIPEG**  
WATER AND WASTE DEPARTMENT

PROJECT TITLE: 2013 WATERMAIN RENEWALS CONTRACT 4

STATIONING: STA 4+75 TO STA 6+00

SHEET 04 OF 05  
COMPUTER FILE NAME: ST MARYS\_2 PLOT  
CITY DRAWING NUMBER: D-13169