

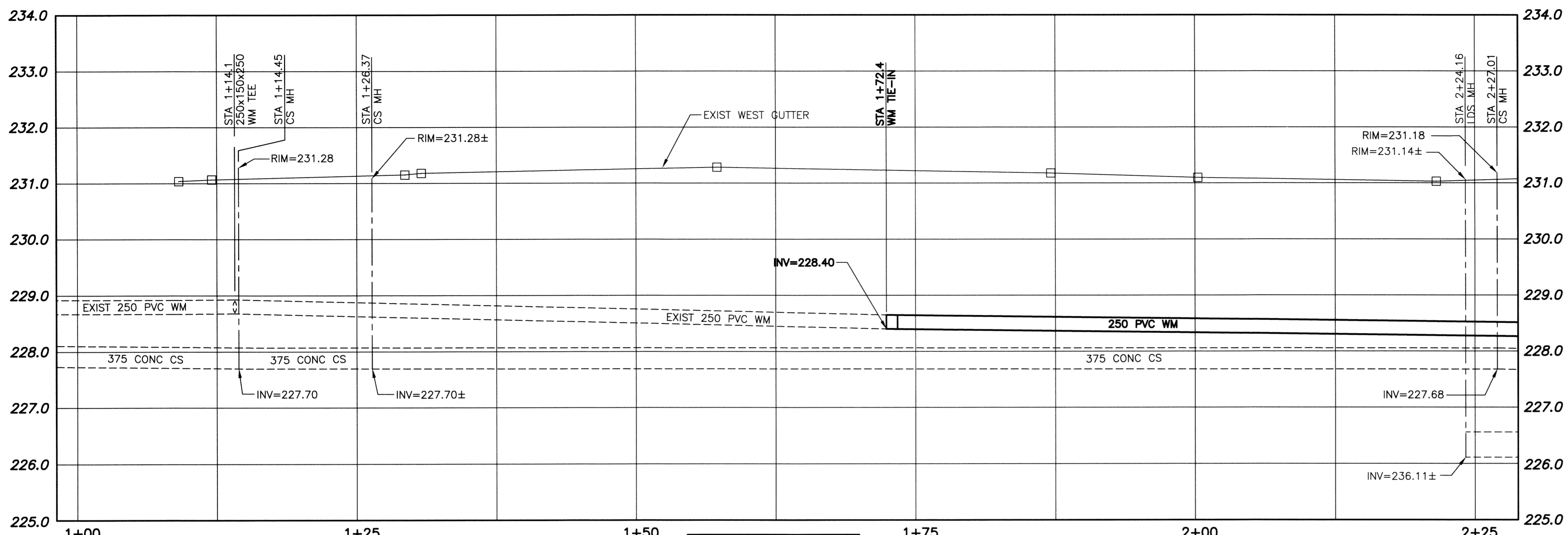
WARNING

1. NOTIFY THE GAS COMPANY OF THE PROPOSED LOCATION OF EXCAVATION.
2. TAKE PRECAUTION TO AVOID DAMAGE TO GAS COMPANY INSTALLATIONS.
3. SEE PROVINCIAL REGULATION 140/92 FOR DETAILS.

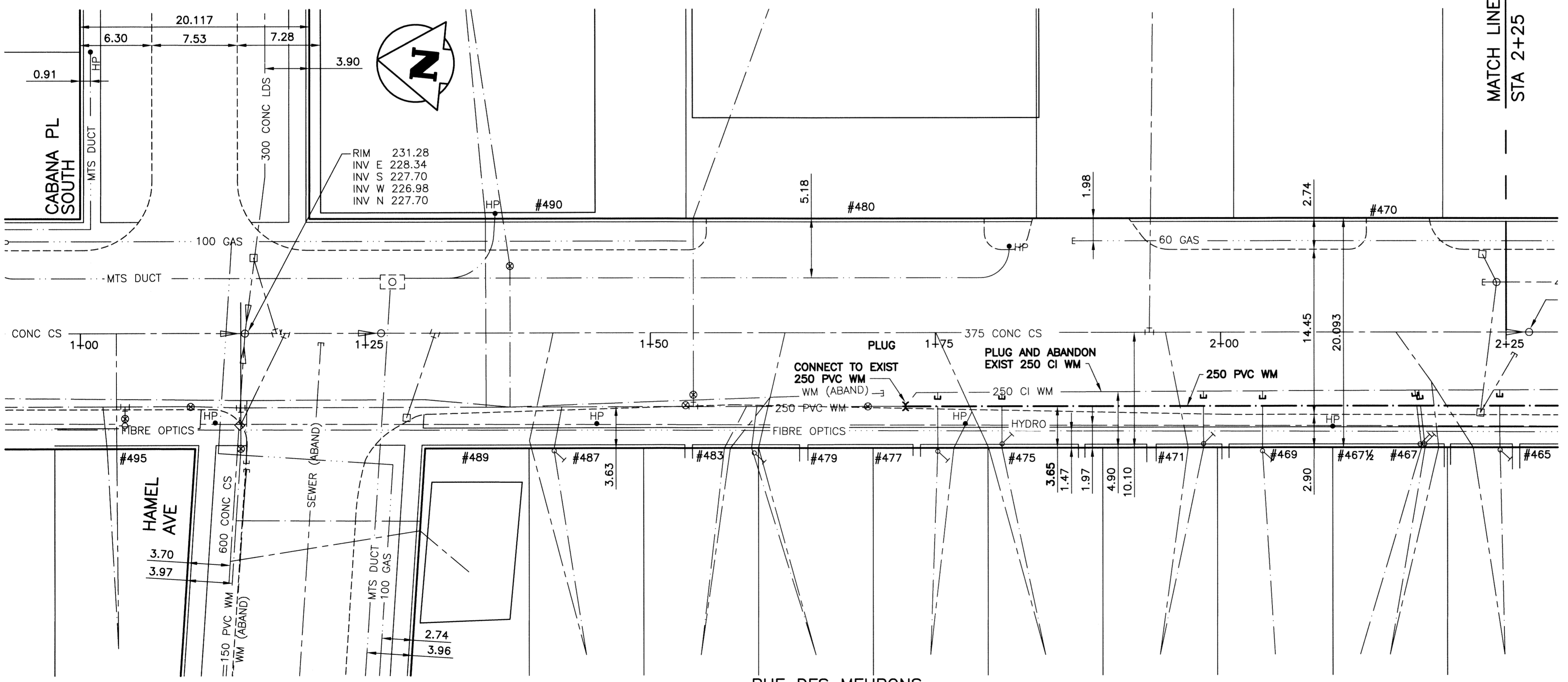
METRIC

WHOLE NUMBERS INDICATE MILLIMETRES
DECIMALIZED NUMBERS INDICATE METRES

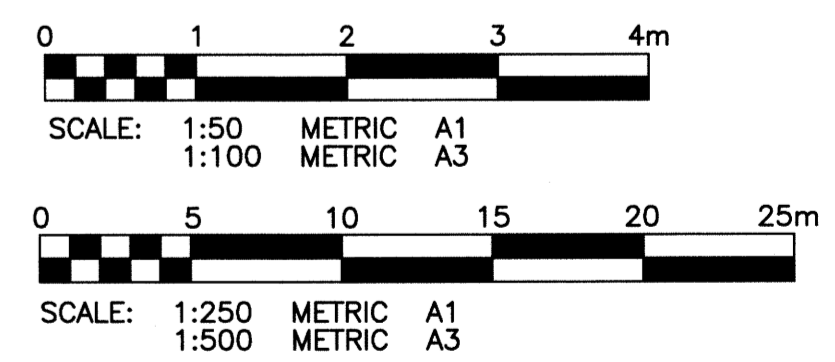
- CONSTRUCTION NOTES:**
1. EXPOSE WATERMAIN CONNECTIONS AND CONFIRM INVERTS PRIOR TO CONSTRUCTION.
 2. INSTALL WATERMAIN BY TRENCHLESS METHODS.
 3. ALL MATERIALS SHALL CONFORM TO THE CITY OF WINNIPEG STANDARD CONSTRUCTION SPECIFICATIONS.
 4. MINIMUM COVER TO TOP OF PROPOSED WATERMAIN SHALL BE 2.5m FROM STREET CENTERLINE.
 5. INSTALL ALL HYDRANTS WITH FLANGE ELEVATION 50mm TO 150mm ABOVE FINISHED GRADE.
 6. REPLACE ALL EXISTING LEAD SERVICES FROM THE PROPOSED WATERMAIN TO PROPERTY LINE.
 7. NOTIFY ALL AFFECTED RESIDENTS AND BUSINESSES 24 HOURS IN ADVANCE OF ANY WATER SHUTDOWN OR DISRUPTION OF SERVICES.
 8. LOCATION OF WATER SERVICES SHOWN ON DRAWING ARE APPROXIMATE. THE CONTRACTOR SHALL FIELD LOCATE ALL WATER SERVICES PRIOR TO CONSTRUCTION.
 9. BACKFILL UNDER OR WITHIN 1.0m OF PAVEMENTS, (INCLUDING SIDEWALKS) SHALL BE CLASS 3 BACKFILL EXCEPT AS NOTED. BACKFILL IN BOULEVARDS SHALL BE CLASS 5 BACKFILL.
 10. WATER VALVES TO BE CLOCKWISE TO CLOSE (BLACK OPERATING NUT)



NOTE: CHAINAGES SHOWN ARE ALONG CENTERLINE OF R.O.W.



CURB STOP				CORPORATION STOP	
ADDRESS TYPE/NATURE	DISTANCE (METERS)	SIZE(mm) & TYPE	SHORT & LONG MEASUREMENT (METER)	CORPORATION LOCATION	REMARKS
490 DES MEURONS ST COMMERCIAL					150mm MAIN VALVE AT TEE AND 150mm MAIN VALVE AT PROPERTY LINE BOTH VALVES ARE ON T
489 DES MEURONS ST RESIDENTIAL	BLDG 0.2	20 COPPER	6.1m R/L HL		
487 DES MEURONS ST RESIDENTIAL	BLDG 6.9	20 COPPER	9.7m NNL DES MEURONS 5.8m L/RHL		
483 DES MEURONS ST RESIDENTIAL	BLDG 6.8	20 COPPER	1.8 R/LHL		
479 DES MEURONS ST RESIDENTIAL	BLDG 6.8	20 COPPER	6.0 R/RHL		
477 DES MEURONS ST RESIDENTIAL	BLDG 7.1	20 COPPER	1.4 R/LHL		
475 DES MEURONS ST RESIDENTIAL	BLDG 5.0	20 COPPER	1.4 R/LHL	0.8 L/RHL	
471 DES MEURONS ST RESIDENTIAL	BLDG 6.9	20 COPPER	0.6 L/LHL		
470 DES MEURONS ST RESIDENTIAL	BLDG 19.8	25 COPPER	1.2 R OF R 27.1 N OF GABOURY P/L	OPPOS S/C	DR/WY A3411 SEWER/48 150mm POLY B 8.8m N/FIRST MH N/GABOURY PL WW-SRVICE CUT-SWR PLGD
469 DES MEURONS ST RESIDENTIAL	BLDG 7.1	20 COPPER	2.5 L/RHL		
467 DES MEURONS ST RESIDENTIAL	BLDG 8.4	20 COPPER	0.9 N/SHL	0.6 N OF S/C	
467 DES MEURONS ST RESIDENTIAL	BLDG 6.7	20 COPPER	1.2 N/SHL	0.6 N OF S/C	
465 DES MEURONS ST RESIDENTIAL	BLDG 6.0	20 COPPER	3.5 L/RHL		



APEGM
Certificate of Authorization
KGS Group
No. 245

EXISTING	LEGEND-PLAN	PROPOSED	EXISTING	LEGEND-PLAN	PROPOSED	EXISTING	LEGEND-PROFILE	PROPOSED
150 WM	WATERMAIN	150 WM	HYDRO	HYDRO	150 WM	WATERMAIN	150 WM	WATERMAIN
Hydrant	HYDRANT	Valve	M.T.S.	M.T.S.	Hydrant	HYDRANT, VALVE	Hydrant	HYDRANT, VALVE
300 LBS	LAND DRAINAGE SEWER	300 LBS	CONCRETE	CONCRETE	300 LBS	LAND DRAINAGE SEWER	300 LBS	LAND DRAINAGE SEWER
250 WWS	WASTE WATER SEWER	250 WWS	ASPHALT	ASPHALT	250 WWS	WASTE WATER SEWER	250 WWS	WASTE WATER SEWER
Manhole	MANHOLE	Manhole	SIDEWALK	SIDEWALK	C PROFILE	C PROFILE	C PROFILE	C PROFILE
Catch Basin	CATCH BASIN	Curb Inlet	PLANNING	PLANNING	North/West Gutter	NORTH/WEST GUTTER	North/West Gutter	NORTH/WEST GUTTER
Bend	BEND	Reducer	PROPERTY LINE	PROPERTY LINE	South/East Gutter	SOUTH/EAST GUTTER	South/East Gutter	SOUTH/EAST GUTTER
Survey Bar	SURVEY BAR	Gas	SURVEY BAR	SURVEY BAR	N/W, S/E P'S	N/W, S/E P'S	N/W, S/E P'S	N/W, S/E P'S
Curb Stop	CURB STOP	Tee	GAS	GAS	N/W, S/E TOP/CURB	N/W, S/E TOP/CURB	N/W, S/E TOP/CURB	N/W, S/E TOP/CURB
Tee	TEE	Curb Stop	Curb Stop	CURB STOP				
Tee	TEE	Tee	Tee	TEE				

LOCATION APPROVED UNDERGROUND STRUCTURES

SUPV. U/G STRUCTURES COMMITTEE DATE

NOTE: LOCATION OF UNDERGROUND STRUCTURES AS SHOWN ARE BASED ON THE BEST INFORMATION AVAILABLE BUT NO GUARANTEE IS GIVEN THAT THE GIVEN LOCATIONS ARE EXACT. CONFIRMATION OF EXISTENCE AND EXACT LOCATION OF ALL SERVICES MUST BE OBTAINED FROM THE INDIVIDUAL UTILITIES BEFORE PROCEEDING WITH CONSTRUCTION.

KGS BASE ELEV.

DWGS BASE ON C.S.R.S. NAD 83 SYSTEM UTM GRID.

KGS GROUP CONSULTING ENGINEERS

DESIGNED BY: BJM
CHECKED BY: RBO
DRAWN BY: DMW
APPROVED BY: [Signature]

HOR. SCALE: 1:250
VERTICAL: 1:50

RELEASED FOR CONSTRUCTION: 13/01/16

ENGINEER'S SEAL

B.J. MIKOLAYENKO
Member 24688
MARCH 26/2013

CONSULTANT DRAWING NO. 13-0107-001

THE CITY OF WINNIPEG WATER AND WASTE DEPARTMENT

PROJECT TITLE: 2013 WATERMAIN RENEWALS CONTRACT 4

RUE DES MEURONS HAMEL AVE TO BERTRAND ST STA 1+00 TO STA 2+25

SHEET 01 OF 04

COMPUTER FILE NAME: RUE DES MEURONS PLOT

CITY DRAWING NUMBER: D-13171

File Name: P:\Projects\2013\13-0107-001\Doc Control\Tobiasued\DWG\247-2013_D-13171-Rev.0.dwg - Tab: D-13171 Plotted By: Dderoch 13/03/26 [Tue 11:09am]