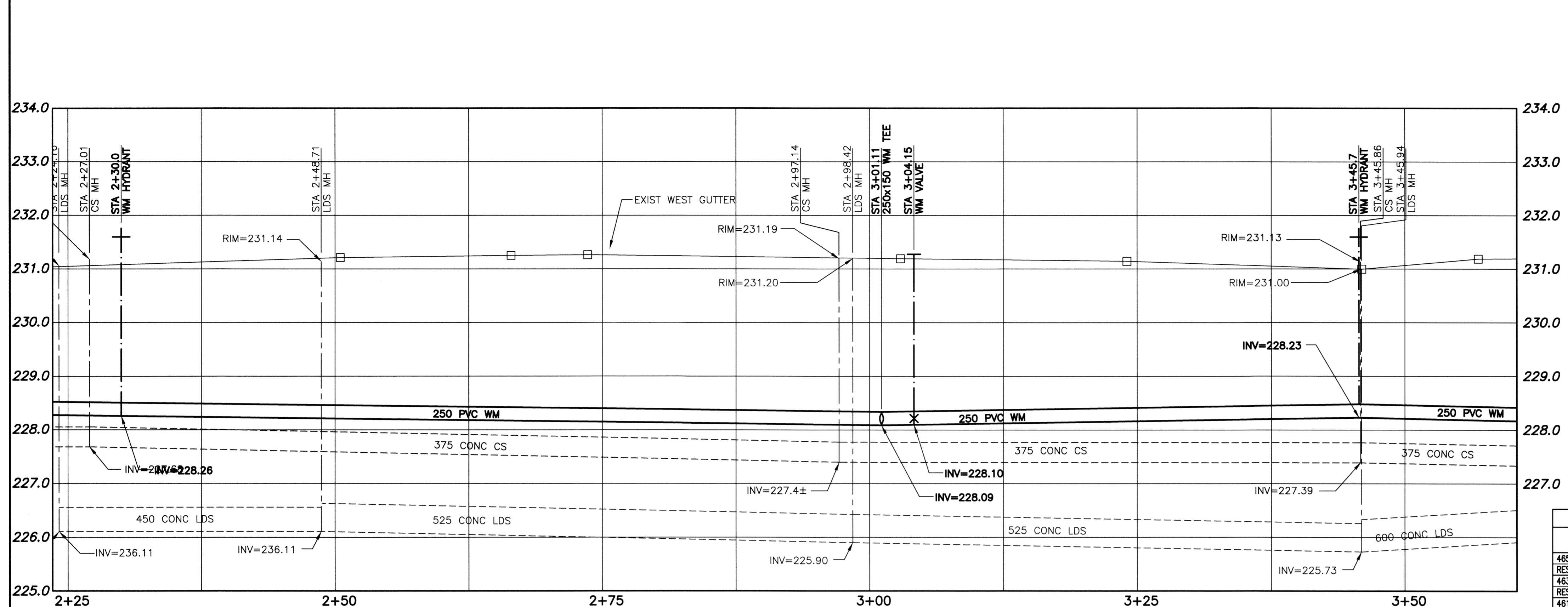
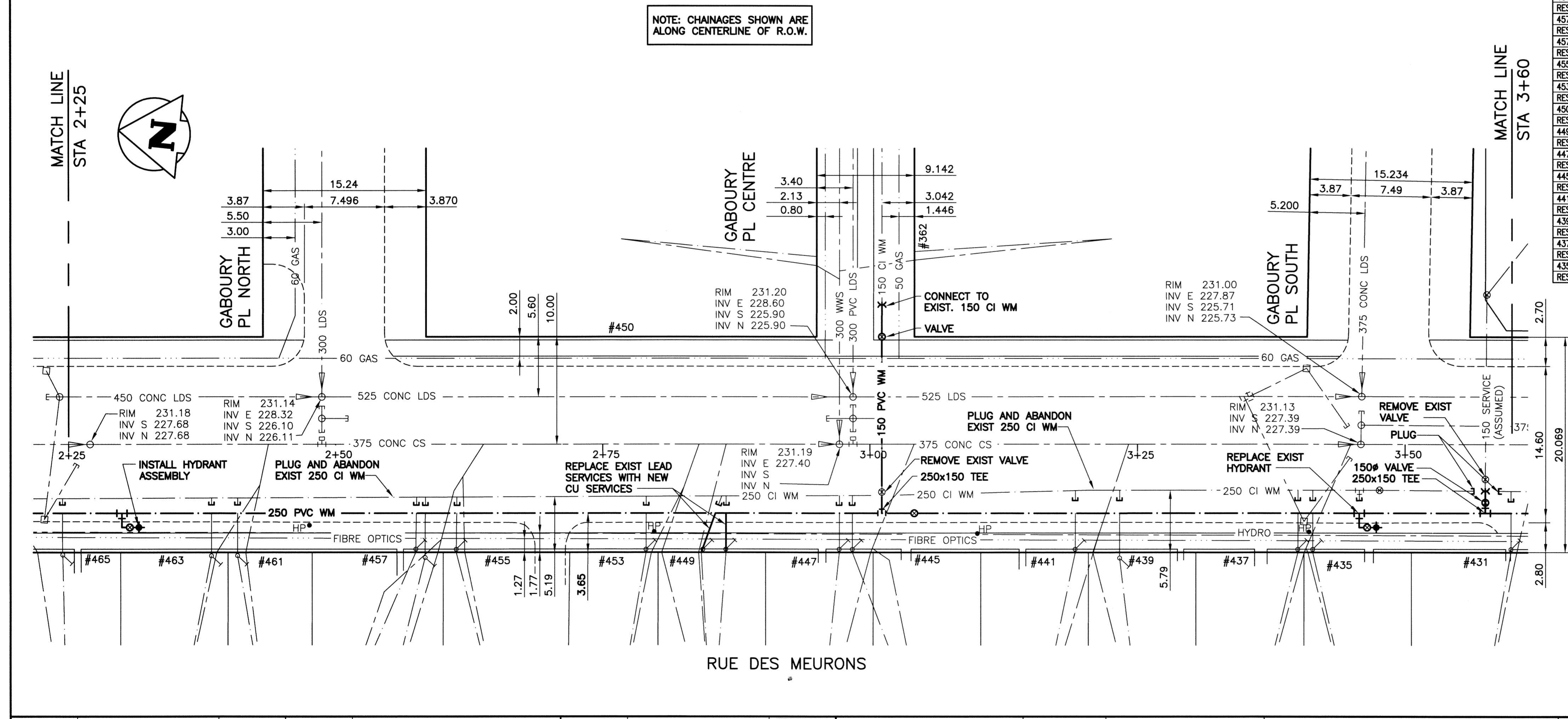


File Name: P:\Projects\2013\13-0107-001\Doc\Control\ToBeIssued\DWG\247-2013_D-13172-Rev 0.dwg - Tab: D-13172 Plotted By: Dderoche 13/03/26 [Tue 11:09am]



NOTE: CHAINAGES SHOWN ARE ALONG CENTERLINE OF R.O.W.

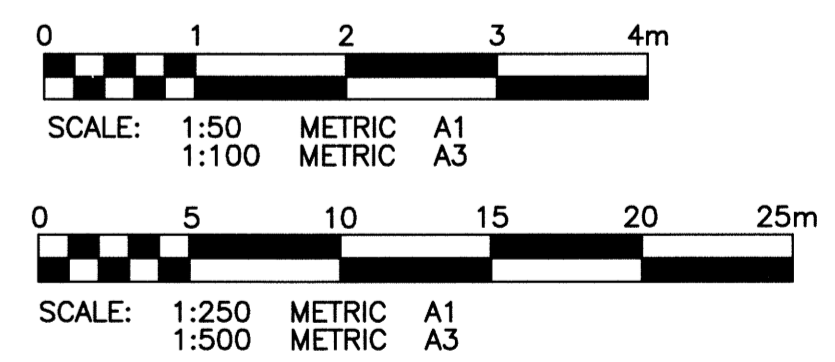


WARNING
 1. NOTIFY THE GAS COMPANY OF THE PROPOSED LOCATION OF EXCAVATION.
 2. TAKE PRECAUTION TO AVOID DAMAGE TO GAS COMPANY INSTALLATIONS.
 3. SEE PROVINCIAL REGULATION 140/92 FOR DETAILS.

METRIC
 WHOLE NUMBERS INDICATE MILLIMETRES
 DECIMALIZED NUMBERS INDICATE METRES

- CONSTRUCTION NOTES:**
1. EXPOSE WATERMAIN CONNECTIONS AND CONFIRM INVERTS PRIOR TO CONSTRUCTION.
 2. INSTALL WATERMAIN BY TRENCHLESS METHODS.
 3. ALL MATERIALS SHALL CONFORM TO THE CITY OF WINNIPEG STANDARD CONSTRUCTION SPECIFICATIONS.
 4. MINIMUM COVER TO TOP OF PROPOSED WATERMAIN SHALL BE 2.5m FROM STREET CENTERLINE.
 5. INSTALL ALL HYDRANTS WITH FLANGE ELEVATION 50mm TO 150mm ABOVE FINISHED GRADE.
 6. REPLACE ALL EXISTING LEAD SERVICES FROM THE PROPOSED WATERMAIN TO PROPERTY LINE.
 7. NOTIFY ALL AFFECTED RESIDENTS AND BUSINESSES 24 HOURS IN ADVANCE OF ANY WATER SHUTDOWN OR DISRUPTION OF SERVICES.
 8. LOCATION OF WATER SERVICES SHOWN ON DRAWING ARE APPROXIMATE. THE CONTRACTOR SHALL FIELD LOCATE ALL WATER SERVICES PRIOR TO CONSTRUCTION.
 9. BACKFILL UNDER OR WITHIN 1.0m OF PAVEMENTS, (INCLUDING SIDEWALKS) SHALL BE CLASS 3 BACKFILL EXCEPT AS NOTED. BACKFILL IN BOULEVARDS SHALL BE CLASS 5 BACKFILL.
 10. WATER VALVES TO BE CLOCKWISE TO CLOSE (BLACK OPERATING NUT)

CURB STOP				CORPORATION STOP	
ADDRESS	DISTANCE (METERS)	SIZE(mm) & TYPE	SHORT & LONG MEASUREMENT (METER)	CORPORATION LOCATION	REMARKS
465 DES MEURONS ST RESIDENTIAL	BLDG 6.0	20 COPPER	3.5 L/RHL		
463 DES MEURONS ST RESIDENTIAL	BLDG 5.3	20 COPPER	0.9 L/RHL		
461 DES MEURONS ST RESIDENTIAL	BLDG 7.9	20 COPPER	1.0 L/RHL		SEE PERMIT 24045 MAR 29/90 WATER LINE REPLACEMENT ON PROP
457 DES MEURONS ST RESIDENTIAL	BLDG 8.2	20 COPPER	9.6 L/RHL		
457 DES MEURONS ST RESIDENTIAL	BLDG 7.3	20 COPPER	1.2 N/SHL	5.2 E OF S/C	
455 DES MEURONS ST RESIDENTIAL	BLDG 5.5	20 COPPER	0.6 S/NHL	5.5 E OF S/C	
453 DES MEURONS ST RESIDENTIAL	BLDG 7.6	20 COPPER	0.6 S/NHL		SEE PERMIT 25864-SEPT. 16/94-SEWER REPAIR ON PROP. EXIST SEWER CUT OFF PLUGGED
450 DES MEURONS ST RESIDENTIAL	BLDG 9.4	20 COPPER	0.8 L/LHL		
449 DES MEURONS ST RESIDENTIAL	BLDG 7.6	12 LEAD	2.4 R/LHL		TAX STB-708410-06 PROP/REN PERMIT#34785 SERVICE BOX IS
447 DES MEURONS ST RESIDENTIAL	BLDG 8.0	20 COPPER	6.9 L/RHL		
445 DES MEURONS ST RESIDENTIAL	BLDG 9.1	20 COPPER	3.0 R/RHL		
441 DES MEURONS ST RESIDENTIAL	BLDG 5.0	20 COPPER	1.0 L/LHL		
439 DES MEURONS ST RESIDENTIAL	BLDG 5.6	20 COPPER	1.8 L/RHL		
437 DES MEURONS ST RESIDENTIAL	BLDG 8.3	20 COPPER	1.7 L/LHL		TAX STB3-708460-06
435 DES MEURONS ST RESIDENTIAL	BLDG 8.0	20 COPPER	0.3 L/RHL		



150 WM	WATERMAIN	150 WM	HYDRANT	HYDRANT	150 WM	WATERMAIN	150 WM
+	HYDRANT	+	VALVE	M.T.S.	+	HYDRANT, VALVE	+
○	LAND DRAINAGE SEWER	○	CONCRETE	ASPHALT	○	LAND DRAINAGE SEWER	○
○	WASTE WATER SEWER	○	SIDEWALK	PLANING	○	WASTE WATER SEWER	○
○	MANHOLE	○	PROPERTY LINE	SURVEY BAR	○	NORTH/WEST GUTTER	○
○	CATCH BASIN	○	GAS	CURB STOP	○	SOUTH/EAST GUTTER	○
○	CURB INLET	○	TEE	EXISTING	○	N/W, S/E R'S	○
○	BEND	○	EXISTING	LEGEND-PLAN	○	N/W, S/E TOP/CURB	○
○	REDUCER	○	PROPOSED	LEGEND-PROFILE	○	PROPOSED	○
○	EXISTING	○	PROPOSED	LEGEND-PLAN	○	PROPOSED	○

LOCATION APPROVED UNDERGROUND STRUCTURES

SUPV. U/G STRUCTURES COMMITTEE DATE

NOTE:
 LOCATION OF UNDERGROUND STRUCTURES AS SHOWN ARE BASED ON THE BEST INFORMATION AVAILABLE BUT NO GUARANTEE IS GIVEN THAT ALL EXISTING UTILITIES ARE SHOWN OR THAT THE GIVEN LOCATIONS ARE EXACT. CONFIRMATION OF EXISTENCE AND EXACT LOCATION OF ALL SERVICES MUST BE OBTAINED FROM THE INDIVIDUAL UTILITIES BEFORE PROCEEDING WITH CONSTRUCTION.

KGS GROUP CONSULTING ENGINEERS

DESIGNED BY: BJM
 DRAWN BY: DMW
 CHECKED BY: RBO
 APPROVED BY: [Signature]
 HOR. SCALE: 1:250
 VERTICAL: 1:50
 ISSUED FOR CONSTRUCTION: 13/03/26
 DATE: 13/01/16

ENGINEER'S SEAL: B.J. NIKOLAYENKO Member 24888

CONSULTANT DRAWING NO. 13-0107-001

THE CITY OF WINNIPEG
 WATER AND WASTE DEPARTMENT

PROJECT TITLE: 2013 WATERMAIN RENEWALS CONTRACT 4

RUE DES MEURONS
 HAMEL AVE TO BERTRAND ST
 STA 2+25 TO STA 3+60

SHEET OF 02 OF 04
 COMPUTER FILE NAME: RUE DES MEURONS PLOT
 CITY DRAWING NUMBER: D-13172