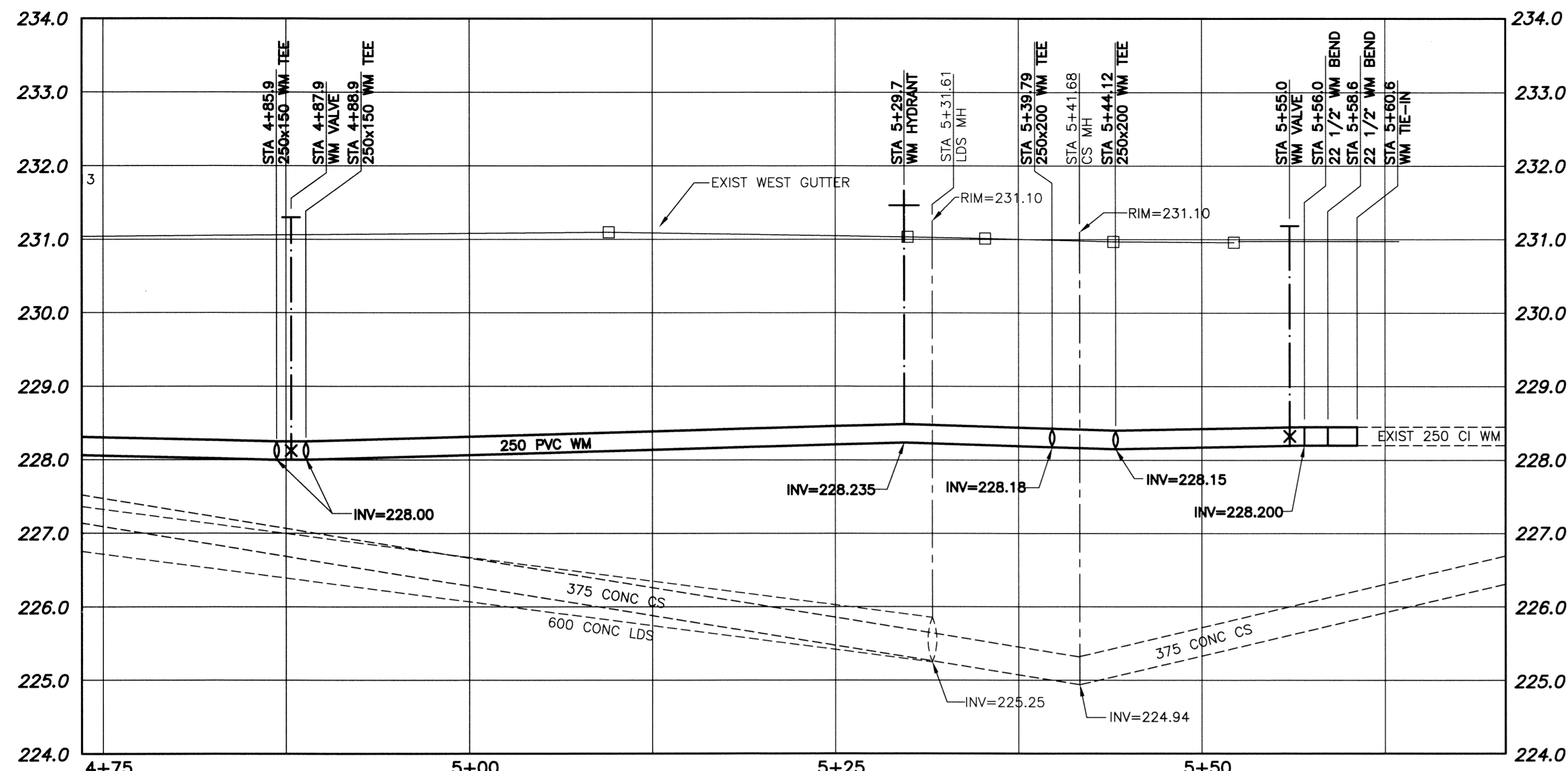
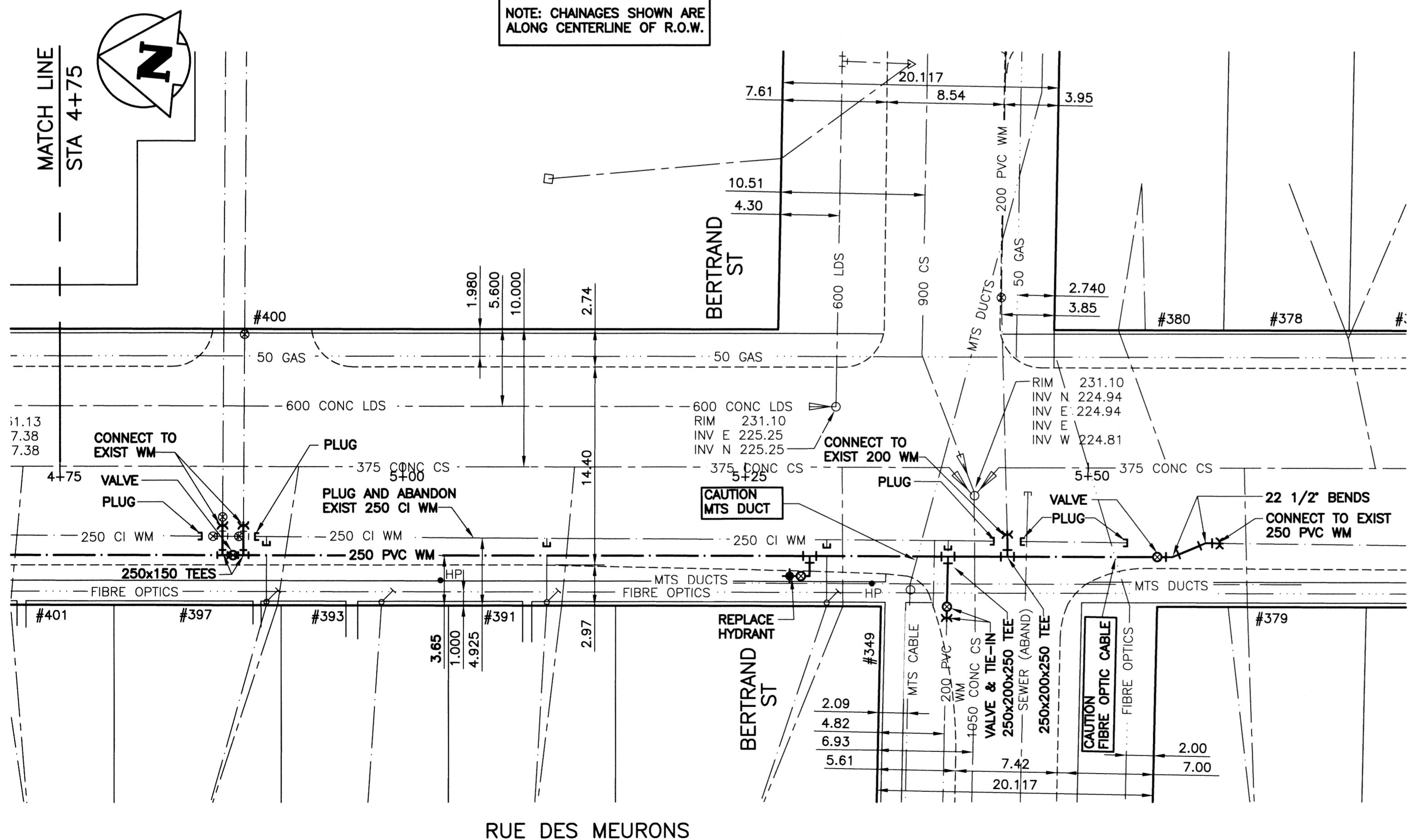


File Name: P:\Projects\2013\13-0107-001\DocControl\ToBeIssued\DWG\247-2013_D-13174-Rev 0.dwg - Tab: D-13174-Rev 0.dwg - Tab: D-13174-Rev 0.dwg [True 11:09am]



NOTE: CHAINAGES SHOWN ARE ALONG CENTERLINE OF R.O.W.



WARNING

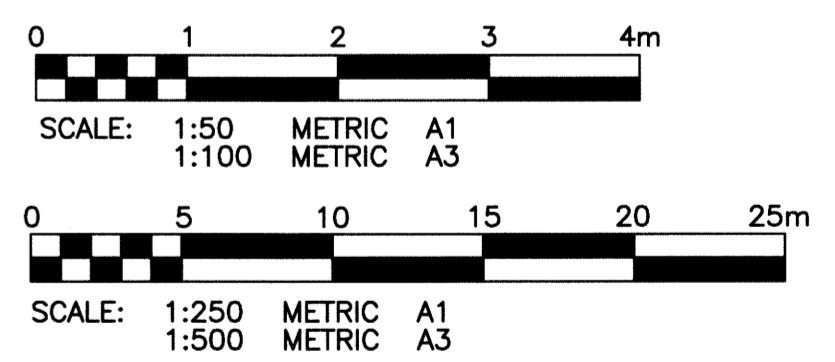
1. NOTIFY THE GAS COMPANY OF THE PROPOSED LOCATION OF EXCAVATION.
2. TAKE PRECAUTION TO AVOID DAMAGE TO GAS COMPANY INSTALLATIONS.
3. SEE PROVINCIAL REGULATION 140/92 FOR DETAILS.

METRIC

WHOLE NUMBERS INDICATE MILLIMETRES
DECIMALIZED NUMBERS INDICATE METRES

- CONSTRUCTION NOTES:**
1. EXPOSE WATERMAIN CONNECTIONS AND CONFIRM INVERTS PRIOR TO CONSTRUCTION.
 2. INSTALL WATERMAIN BY TRENCHLESS METHODS.
 3. ALL MATERIALS SHALL CONFORM TO THE CITY OF WINNIPEG STANDARD CONSTRUCTION SPECIFICATIONS.
 4. MINIMUM COVER TO TOP OF PROPOSED WATERMAIN SHALL BE 2.5m FROM STREET CENTERLINE.
 5. INSTALL ALL HYDRANTS WITH FLANGE ELEVATION 50mm TO 150mm ABOVE FINISHED GRADE.
 6. REPLACE ALL EXISTING LEAD SERVICES FROM THE PROPOSED WATERMAIN TO PROPERTY LINE.
 7. NOTIFY ALL AFFECTED RESIDENTS AND BUSINESSES 24 HOURS IN ADVANCE OF ANY WATER SHUTDOWN OR DISRUPTION OF SERVICES.
 8. LOCATION OF WATER SERVICES SHOWN ON DRAWING ARE APPROXIMATE. THE CONTRACTOR SHALL FIELD LOCATE ALL WATER SERVICES PRIOR TO CONSTRUCTION.
 9. BACKFILL UNDER OR WITHIN 1.0m OF PAVEMENTS, (INCLUDING SIDEWALKS) SHALL BE CLASS 3 BACKFILL EXCEPT AS NOTED. BACKFILL IN BOULEVARDS SHALL BE CLASS 5 BACKFILL.
 10. WATER VALVES TO BE CLOCKWISE TO CLOSE (BLACK OPERATING NUT)

CURB STOP				CORPORATION STOP	
ADDRESS TYPE/NATURE	DISTANCE (METERS)	SIZE(mm) & TYPE	SHORT & LONG MEASUREMENT (METER)	CORPORATION LOCATION	REMARKS
401 DES MEURONS ST RESIDENTIAL	BLDG 10.6	20 COPPER	2.2 L/RHL		
400 DES MEURONS ST COMMERCIAL		150 POLY	42.7 FROM HYD		150mm SPRINKLER-41.1m FROM HYD. AT N/W COR OF BERTRAND. 1.2m STORM SEW
397 DES MEURONS ST RESIDENTIAL	BLDG 10.5	20 COPPER	1.7 L/LHL		NEW SER JAN 1/47/W2
393 DES MEURONS ST RESIDENTIAL	BLDG 10.5	20 COPPER	2.3 R/LHL		
391 DES MEURONS ST RESIDENTIAL	BLDG 11.6	20 COPPER	2.5 R/LHL		
380 DES MEURONS ST RESIDENTIAL	BLDG 29.3	20 COPPER	2.0 R/LHL		
379 DES MEURONS ST RESIDENTIAL	BLDG 11.8	20 COPPER	3.9 L/RHL		
378 DES MEURONS ST RESIDENTIAL	BLDG 6.2	20 COPPER	1.2 R/RHL		
376 DES MEURONS ST RESIDENTIAL	BLDG 4.5	20 COPPER	1.5 L/LHL		
375 DES MEURONS ST RESIDENTIAL	BLDG 9.7	20 COPPER	6.1 L/RHL		
374 DES MEURONS ST RESIDENTIAL	BLDG 4.6	20 COPPER	29.9 SSL BERTRAND	2.1 S/SC	TAX STB2-815610-06 CURB STOP LONG MEAS 101.9m N/FIRST HYD N OF GOULET



APEGM
Certificate of Authorization
KGS Group
No. 245

EXISTING	LEGEND-PLAN	PROPOSED	EXISTING	LEGEND-PLAN	PROPOSED	EXISTING	LEGEND-PROFILE	PROPOSED
150 WM	WATERMAIN	150 WM	HYDRO	150 WM	WATERMAIN	150 WM	WATERMAIN	150 WM
Hydrant symbol	HYDRANT	Valve symbol	M.T.S.	Hydrant symbol	HYDRANT, VALVE	Hydrant symbol	HYDRANT, VALVE	Hydrant symbol
Valve symbol	VALVE	Concrete symbol	CONCRETE	Concrete symbol	CONCRETE	Concrete symbol	CONCRETE	Concrete symbol
300 LDS	LAND DRAINAGE SEWER	300 LDS	ASPHALT	300 LDS	LAND DRAINAGE SEWER	300 LDS	LAND DRAINAGE SEWER	300 LDS
250 WWS	WASTE WATER SEWER	250 WWS	SIDWALK	250 WWS	WASTE WATER SEWER	250 WWS	WASTE WATER SEWER	250 WWS
Manhole symbol	MANHOLE	Planning symbol	PLANNING	Manhole symbol	MANHOLE	Manhole symbol	MANHOLE	Manhole symbol
Catch basin symbol	CATCH BASIN	Property line symbol	PROPERTY LINE	Catch basin symbol	CATCH BASIN	Catch basin symbol	CATCH BASIN	Catch basin symbol
Curb inlet symbol	CURB INLET	Survey bar symbol	SURVEY BAR	Curb inlet symbol	CURB INLET	Curb inlet symbol	CURB INLET	Curb inlet symbol
Bend symbol	BEND	Gas symbol	GAS	Bend symbol	BEND	Bend symbol	BEND	Bend symbol
Reducer symbol	REDUCER	Curb stop symbol	CURB STOP	Reducer symbol	REDUCER	Reducer symbol	REDUCER	Reducer symbol
Tee symbol	TEE	Tee symbol	TEE	Tee symbol	TEE	Tee symbol	TEE	Tee symbol

LOCATION APPROVED UNDERGROUND STRUCTURES

SUPV. U/G STRUCTURES COMMITTEE DATE

NOTE: LOCATION OF UNDERGROUND STRUCTURES AS SHOWN ARE BASED ON THE BEST INFORMATION AVAILABLE BUT NO GUARANTEE IS GIVEN THAT ALL EXISTING UTILITIES ARE SHOWN OR THAT THE GIVEN LOCATIONS ARE EXACT. CONFIRMATION OF EXISTENCE AND EXACT LOCATION OF ALL SERVICES MUST BE OBTAINED FROM THE INDIVIDUAL UTILITIES BEFORE PROCEEDING WITH CONSTRUCTION.

B.M. KGS BASE ELEV.	DWGS BASE ON C.S.R.S. NAD 83 SYSTEM UTM GRID.
DESIGNED BY: BJM	CHECKED BY: RBO
DRAWN BY: DMW	APPROVED BY:
HOR. SCALE: 1:250	RELEASED FOR CONSTRUCTION:
VERTICAL: 1:50	DATE: 13/01/16
0 ISSUED FOR CONSTRUCTION	DATE: 13/03/26
NO. REVISIONS	DATE

KGS GROUP CONSULTING ENGINEERS

ENGINEER'S SEAL: B.J. MIKOLAYENKO, Member 24688, MARCH 26/2013

DESIGNED BY: BJM, CHECKED BY: RBO, DRAWN BY: DMW, APPROVED BY:

HOR. SCALE: 1:250, VERTICAL: 1:50

0 ISSUED FOR CONSTRUCTION 13/03/26

NO. REVISIONS DATE DATE 13/01/16

CONSULTANT DRAWING NO. 13-0107-001

THE CITY OF WINNIPEG WATER AND WASTE DEPARTMENT

PROJECT TITLE: 2013 WATERMAIN RENEWALS CONTRACT 4

RUE DES MEURONS HAMEL AVE TO BERTRAND ST STA 4+75 TO STA 5+75

SHEET 04 OF 04

COMPUTER FILE NAME: RUE DES MEURONS PLOT

CITY DRAWING NUMBER: D-13174