

**CAUTION:**

900 FEEDERMAIN ON E SIDE OF WAVERLEY ST

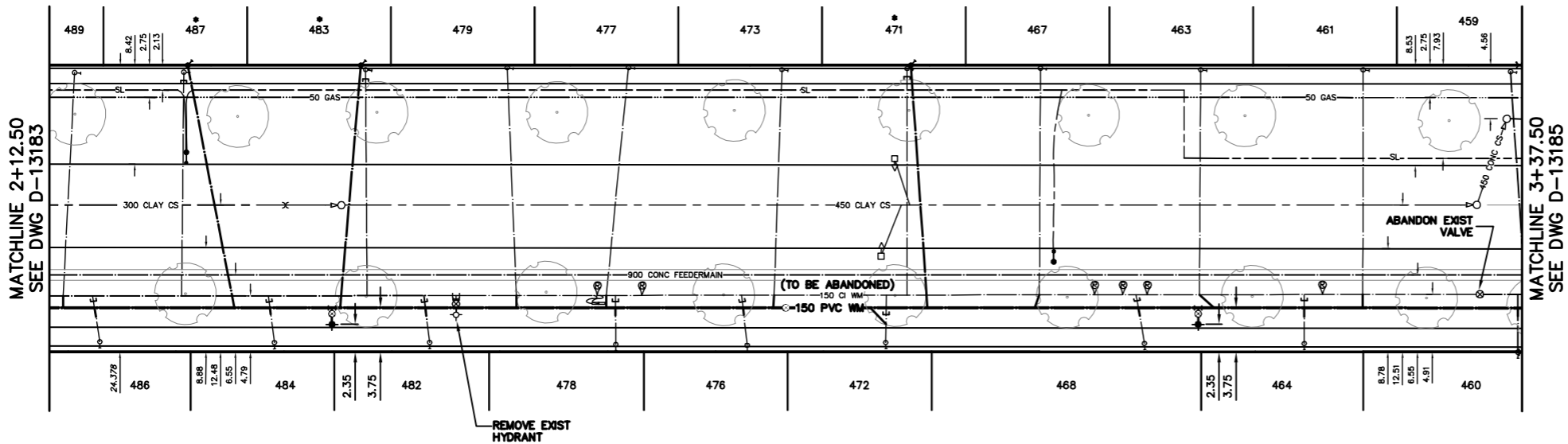
HYDRO-VAC 900 FEEDERMAIN AT EACH LOCATION WHERE CROSSING WITH SERVICE.

NO CONSTRUCTION EQUIPMENT OR MATERIAL TO BE PLACED OR SETUP DIRECTLY OVER 900 FEEDERMAIN.

DO NOT USE VIBRATORY EQUIPMENT WITHIN 3.0m OF 900 FEEDERMAIN.

NOTE: CHAINAGES SHOWN ARE ALONG E. R. OF WAVERLEY ST.

**WAVERLEY STREET**

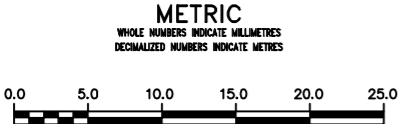


**WATER SERVICE INFORMATION**

ADDRESS	SIZE (mm) MATERIAL (STREET)	SIZE (mm) MATERIAL (PROP.)	SHORT & LONG MEASUREMENT	CORR. LOCATION	REMARKS
459 WAVERLEY ST RESIDENTIAL	20 COPPER	20 COPPER	8.4 NSL HSE		RECONNECT SERVICE
460 WAVERLEY ST RESIDENTIAL	20 COPPER	20 COPPER	186.4>NNL CORYDON	1.3 N OF S/C	RECONNECT SERVICE
461 WAVERLEY ST RESIDENTIAL	20 COPPER	20 COPPER	11.5 NSL HSE		OPP S/C
461 WAVERLEY ST RESIDENTIAL	20 COPPER	20 COPPER	187.10>NNL CORYDON		RECONNECT SERVICE
461 WAVERLEY ST RESIDENTIAL	20 COPPER	20 COPPER	8.1 NSL HSE		OPP S/C
463 WAVERLEY ST RESIDENTIAL	20 COPPER	20 COPPER	173.86>NNL CORYDON		RECONNECT SERVICE
464 WAVERLEY ST RESIDENTIAL	20 COPPER	20 COPPER	5.4 NSL HSE	0.1 S OF S/C	RECONNECT SERVICE
464 WAVERLEY ST RESIDENTIAL	20 COPPER	20 COPPER	160.07>NNL CORYDON		OPP S/C
464 WAVERLEY ST RESIDENTIAL	20 COPPER	20 COPPER	5.9 NSL HSE		RECONNECT SERVICE
467 WAVERLEY ST RESIDENTIAL	20 COPPER	20 COPPER	168.90>NNL CORYDON		RECONNECT SERVICE
467 WAVERLEY ST RESIDENTIAL	20 COPPER	20 COPPER	4.0 NSL HSE	0.1 S OF S/C	RECONNECT SERVICE
467 WAVERLEY ST RESIDENTIAL	20 COPPER	20 COPPER	146.60>NNL CORYDON		RECONNECT SERVICE
471 WAVERLEY ST RESIDENTIAL	20 COPPER	20 COPPER	4.9 NSL HSE		RENEW TO R/W/ 20 COPPER
472 WAVERLEY ST RESIDENTIAL	20 COPPER	20 COPPER	135.29>NNL CORYDON		RECONNECT SERVICE
472 WAVERLEY ST RESIDENTIAL	20 COPPER	20 COPPER	6.1 NSL HSE		RECONNECT SERVICE
473 WAVERLEY ST RESIDENTIAL	20 COPPER	20 COPPER	133.40>NNL CORYDON		RECONNECT SERVICE
473 WAVERLEY ST RESIDENTIAL	20 COPPER	20 COPPER	5.4 NSL HSE	0.6 S OF S/C	RECONNECT SERVICE
476 WAVERLEY ST RESIDENTIAL	20 COPPER	20 COPPER	124.81>NNL CORYDON		RECONNECT SERVICE
476 WAVERLEY ST RESIDENTIAL	20 COPPER	20 COPPER	6.1 NSL HSE		RECONNECT SERVICE
477 WAVERLEY ST RESIDENTIAL	20 COPPER	20 COPPER	121.75>NNL CORYDON		RECONNECT SERVICE
477 WAVERLEY ST RESIDENTIAL	20 COPPER	20 COPPER	5.2 NSL HSE	1.9 S OF S/C	RECONNECT SERVICE
478 WAVERLEY ST RESIDENTIAL	20 COPPER	20 COPPER	111.63>NNL CORYDON		RECONNECT SERVICE
478 WAVERLEY ST RESIDENTIAL	20 COPPER	20 COPPER	8.4 NSL HSE		OPP S/C
479 WAVERLEY ST RESIDENTIAL	20 COPPER	20 COPPER	110.50>NNL CORYDON		RECONNECT SERVICE
479 WAVERLEY ST RESIDENTIAL	20 COPPER	20 COPPER	8.1 NSL HSE		RECONNECT SERVICE
479 WAVERLEY ST RESIDENTIAL	20 COPPER	20 COPPER	101.30>NNL CORYDON		RECONNECT SERVICE
482 WAVERLEY ST RESIDENTIAL	20 COPPER	20 COPPER	5.4 NSL HSE	0.4 S OF S/C	RECONNECT SERVICE
483 WAVERLEY ST RESIDENTIAL	20 COPPER	20 COPPER	94.70>NNL CORYDON		RECONNECT SERVICE
483 WAVERLEY ST RESIDENTIAL	20 COPPER	20 COPPER	7.2 NSL HSE		RENEW TO R/W/ 20 COPPER
484 WAVERLEY ST RESIDENTIAL	20 COPPER	20 COPPER	89.30>NNL CORYDON		RECONNECT SERVICE
484 WAVERLEY ST RESIDENTIAL	20 COPPER	20 COPPER	4.9 NSL HSE	0.4 S OF S/C	RECONNECT SERVICE
484 WAVERLEY ST RESIDENTIAL	20 COPPER	20 COPPER	4.2 NSL HSE		RECONNECT SERVICE
486 WAVERLEY ST RESIDENTIAL	20 COPPER	20 COPPER	2.2 NSL HSE		RECONNECT SERVICE
487 WAVERLEY ST RESIDENTIAL	20 COPPER	20 COPPER	66.70>NNL CORYDON		RECONNECT SERVICE
487 WAVERLEY ST RESIDENTIAL	20 COPPER	20 COPPER	73.85>NNL CORYDON		RENEW TO R/W/ 20 COPPER
488 WAVERLEY ST RESIDENTIAL	20 COPPER	20 COPPER	73.85>NNL CORYDON		RECONNECT SERVICE
488 WAVERLEY ST RESIDENTIAL	20 COPPER	20 COPPER	8.5 NSL HSE		RECONNECT SERVICE
489 WAVERLEY ST RESIDENTIAL	20 COPPER	20 COPPER	64.62>NNL CORYDON		RECONNECT SERVICE

\* SERVICES TO BE RENEWED TO R. ALL OTHERS TO BE RECONNECTED

VALVES TO BE COUNTER-CLOCKWISE TO CLOSE (RED OPERATING NUT)



**WARNING**

IF POWER EQUIPMENT OR EXPLOSIVES ARE TO BE USED FOR EXCAVATION ON THIS PROJECT THE CONTRACTOR MUST:

- NOTIFY THE GAS COMPANY OF THE PROPOSED LOCATION OF EXCAVATION.
- TAKE PRECAUTION TO AVOID DAMAGE TO GAS COMPANY INSTALLATIONS.

SEE PROVINCIAL REGULATION 210/72 FOR DETAILS

**LOCATION APPROVED UNDERGROUND STRUCTURES**

SUPV. U/G STRUCTURES COMMITTEE DATE

NOTE: LOCATION OF UNDERGROUND STRUCTURES AS SHOWN ARE BASED ON THE BEST INFORMATION AVAILABLE BUT NO GUARANTEE IS GIVEN THAT ALL EXISTING UTILITIES ARE SHOWN OR THAT THE GIVEN LOCATIONS ARE EXACT. CONFIRMATION OF EXISTENCE AND EXACT LOCATION OF ALL SERVICES MUST BE OBTAINED FROM THE INDIVIDUAL UTILITIES BEFORE PROCEEDING WITH CONSTRUCTION.

B.M. ELEV.			
CONSTRUCTION COMPLETION DATE: YYYY MM DD			
DESIGNED BY	RD		
CHECKED BY	SC		
DRAWN BY	CJH		
APPROVED BY	KZ		
SCALE:			
HORIZONTAL	1:250		
VERTICAL	1:50		
RELEASED FOR CONSTRUCTION	K.R. ZUREK		
DATE	2013 04 09		
DATE	13.04.09		
NO.	REVISIONS	DATE	BY

ENGINEER'S SEAL

ORIGINAL SIGNED BY S.R.J. COURNOYER 13.04.08

CONSULTANT DRAWING NUMBER

**THE CITY OF WINNIPEG**  
WATER AND WASTE DEPARTMENT  
ENGINEERING DIVISION

2013 WATER RENEWALS

WAVERLEY STREET  
62.50 N OF CORYDON AVENUE TO  
187.50 N OF CORYDON AVENUE

SHEET 11 OF 15  
CITY DRAWING NUMBER  
D-13184