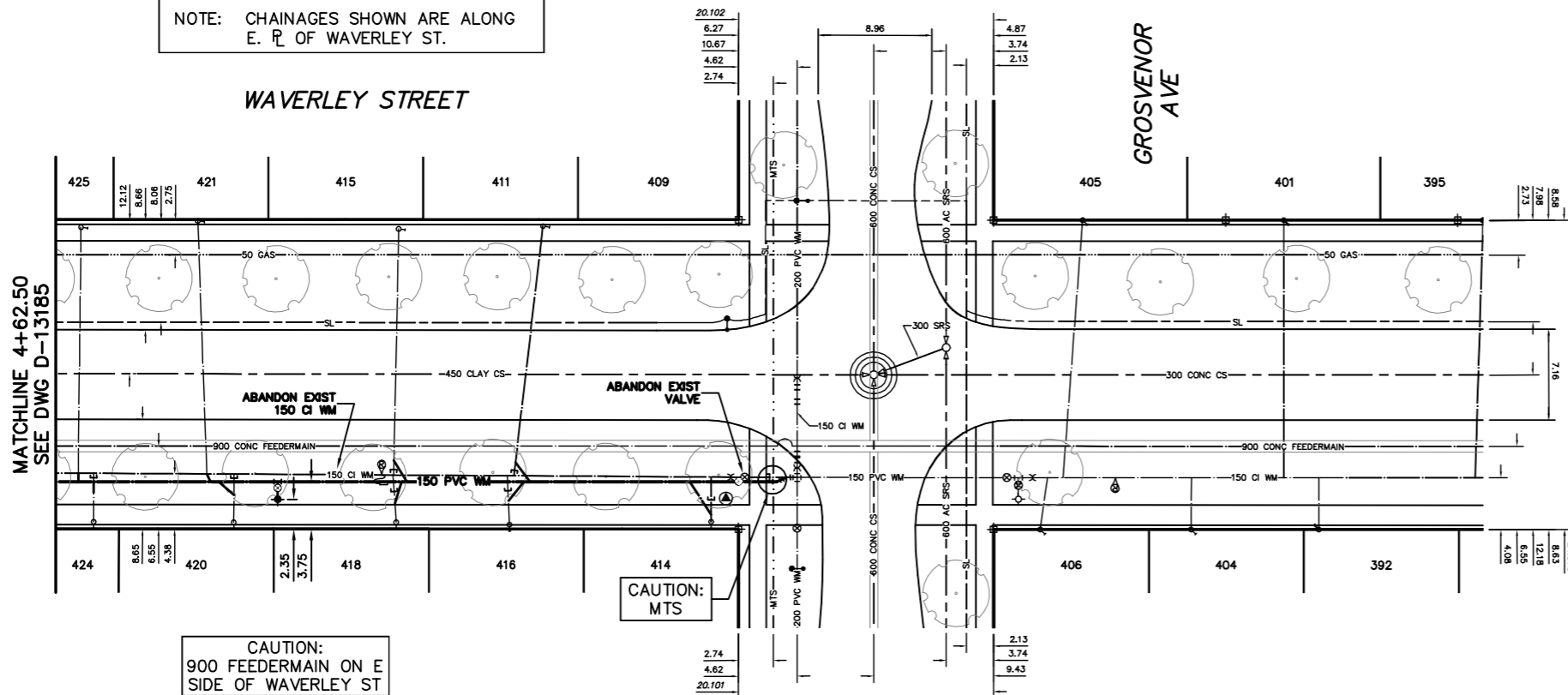




NOTE: CHAINAGES SHOWN ARE ALONG E. R. OF WAVERLEY ST.



CAUTION:
900 FEEDERMAIN ON E
SIDE OF WAVERLEY ST

WATER SERVICE INFORMATION

ADDRESS	SIZE (mm)	SIZE (mm)	SHORT & LONG MEASUREMENT	CORP. LOCATION	REMARKS
409 WAVERLEY ST RESIDENTIAL	20	20	3.20 WEL HSE	0.46 E OF S/C	SERV. OFF GROSVENOR
411 WAVERLEY ST RESIDENTIAL	LEAD	LEAD	15.47 WEL WAVERLEY	2.2 S OF S/C	RECONNECT SERVICE
414 WAVERLEY ST RESIDENTIAL	20	20	1.42 SNL HSE	OPP S/C	RECONNECT SERVICE
415 WAVERLEY ST RESIDENTIAL	20	20	2.19 SSL GROSVENOR	0.3 S OF S/C	RECONNECT SERVICE
416 WAVERLEY ST RESIDENTIAL	20	20	4.74 SNL HSE	0.1 S OF S/C	RECONNECT SERVICE
418 WAVERLEY ST RESIDENTIAL	20	20	18.05 SSL GROSVENOR	0.2 S OF S/C	RECONNECT SERVICE
420 WAVERLEY ST RESIDENTIAL	20	20	1.64 SNL HSE	OPP S/C	RECONNECT SERVICE
421 WAVERLEY ST RESIDENTIAL	20	20	26.90 SSL GROSVENOR	0.7 N OF S/C	RECONNECT SERVICE
424 WAVERLEY ST RESIDENTIAL	20	20	3.67 SNL HSE	OPP S/C	RECONNECT SERVICE
425 WAVERLEY ST RESIDENTIAL	20	20	42.62 SSL GROSVENOR	0.2 S OF S/C	RECONNECT SERVICE
	20	20	0.61 SNL HSE	OPP S/C	RECONNECT SERVICE
	20	20	50.83 SSL GROSVENOR	0.2 S OF S/C	RECONNECT SERVICE
	20	20	1.60 SNL HSE	OPP S/C	RECONNECT SERVICE
	20	20	51.82 SSL GROSVENOR	0.2 S OF S/C	RECONNECT SERVICE

* SERVICES TO BE RENEWED TO R. ALL OTHERS TO BE RECONNECTED

CAUTION:
900 FEEDERMAIN ON E SIDE OF WAVERLEY ST
HYDRO-VAC 900 FEEDERMAIN AT EACH LOCATION WHERE CROSSING WITH SERVICE.
NO CONSTRUCTION EQUIPMENT OR MATERIAL TO BE PLACED OR SETUP DIRECTLY OVER 900 FEEDERMAIN.
DO NOT USE VIBRATORY EQUIPMENT WITHIN 3.0m OF 900 FEEDERMAIN.

VALVES TO BE COUNTER-CLOCKWISE TO CLOSE (RED OPERATING NUT)

METRIC
WHOLE NUMBERS INDICATE MILLIMETRES
DECIMALIZED NUMBERS INDICATE METRES



WARNING
IF POWER EQUIPMENT OR EXPLOSIVES ARE TO BE USED FOR EXCAVATION ON THIS PROJECT THE CONTRACTOR MUST:
1) NOTIFY THE GAS COMPANY OF THE PROPOSED LOCATION OF EXCAVATION.
2) TAKE PRECAUTION TO AVOID DAMAGE TO GAS COMPANY INSTALLATIONS.
SEE PROVINCIAL REGULATION 210/72 FOR DETAILS

LOCATION APPROVED UNDERGROUND STRUCTURES
SUPV. U/G STRUCTURES COMMITTEE DATE
NOTE:
LOCATION OF UNDERGROUND STRUCTURES AS SHOWN ARE BASED ON THE BEST INFORMATION AVAILABLE BUT NO GUARANTEE IS GIVEN THAT ALL EXISTING UTILITIES ARE SHOWN OR THAT THE GIVEN LOCATIONS ARE EXACT. CONFIRMATION OF EXISTENCE AND EXACT LOCATION OF ALL SERVICES MUST BE OBTAINED FROM THE INDIVIDUAL UTILITIES BEFORE PROCEEDING WITH CONSTRUCTION.

B.M. ELEV.	
CONSTRUCTION COMPLETION DATE: YYYY MM DD	
DESIGNED BY	RD
CHECKED BY	SC
DRAWN BY	CJH
APPROVED BY	KZ
SCALE:	
HORIZONTAL	1:250
VERTICAL	1:50
RELEASED FOR CONSTRUCTION	K.R. ZUREK
DATE	2013 04 09
DATE	13.04.09
PLOT DATE:	2013 04 09

ENGINEER'S SEAL	ORIGINAL SIGNED BY S.R.J. COURNOYER 13.04.08
CONSULTANT DRAWING NUMBER	

THE CITY OF WINNIPEG
WATER AND WASTE DEPARTMENT
ENGINEERING DIVISION
2013 WATER RENEWALS
WAVERLEY STREET
312.50 N OF CORYDON AVENUE TO
GROSVENOR AVENUE
SHEET 13 OF 15
CITY DRAWING NUMBER
D-13186