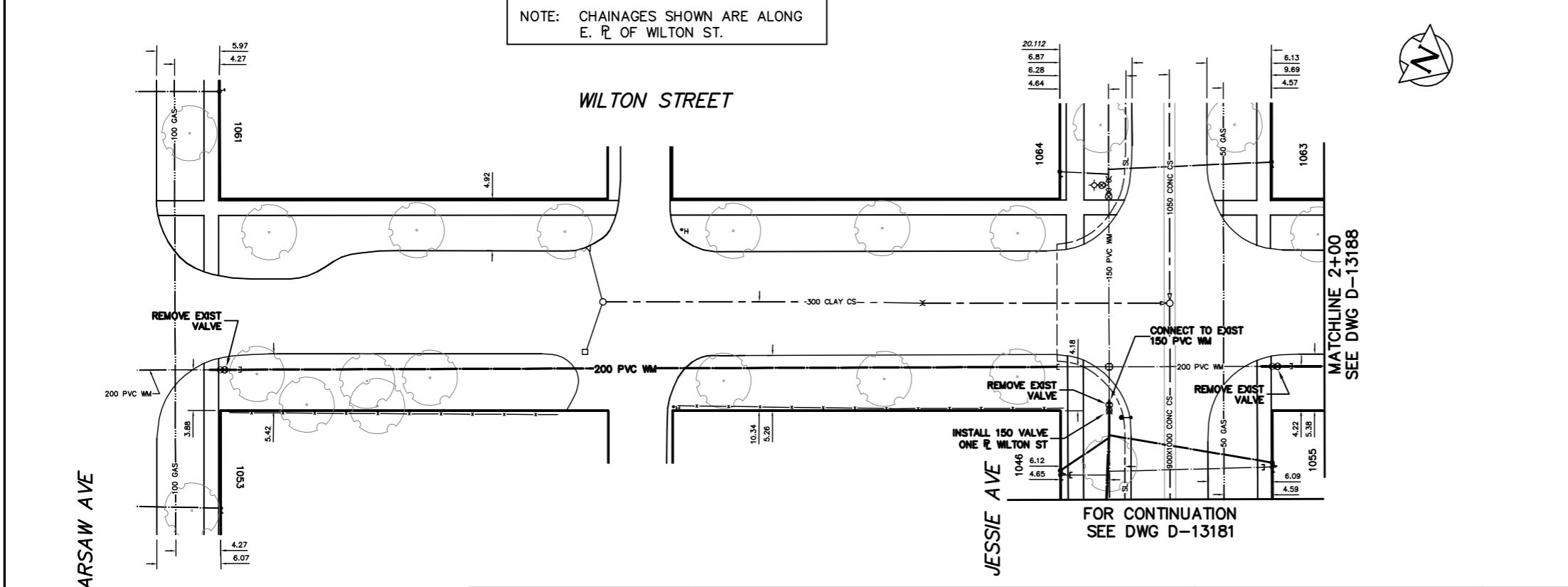


NOTE: CHAINAGES SHOWN ARE ALONG E. R. OF WILTON ST.

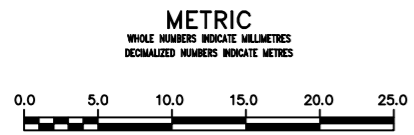


**WATER SERVICE INFORMATION**

ADDRESS	SIZE (mm)	SIZE (mm)	SHORT & LONG	CORP.	REMARKS
(STREET)	MATERIAL	MATERIAL	MEASUREMENT	LOCATION	
		(PROP.)			
1017 JESSIE AVE	20	20	2.77 WEL HSE	OPP S/C	RENEW TO R. W/ 20 COPPER
1018 JESSIE AVE	16	12	18.47 WML GUELPH	-	RENEW TO R. W/ 20 COPPER
1020 JESSIE AVE	20	20	32.24 WML GUELPH	-	RECONNECT SERVICE
1021 JESSIE AVE	20	20	38.44 WML GUELPH	OPP S/C	RECONNECT SERVICE
1022 JESSIE AVE	20	20	OPP EL HSE	0.8 W OF S/C	RENEW TO R. W/ 20 COPPER
1024 JESSIE AVE	16	12	28.53 WML GUELPH	-	WY'D SERV. W/ #1126
1025 JESSIE AVE	20	20	54.16 WML GUELPH	OPP S/C	RENEW TO R. W/ 20 COPPER
1026 JESSIE AVE	20	20	2.84 WEL HSE	0.1 W OF S/C	RECONNECT SERVICE
1029 JESSIE AVE	20	20	42.33 WML GUELPH	-	RECONNECT SERVICE
1030 JESSIE AVE	20	20	0.22 WEL HSE	-	WY'D SERV. W/ #1124
1032 JESSIE AVE	20	20	54.16 WML GUELPH	OPP S/C	RENEW TO R. W/ 20 COPPER
1033 JESSIE AVE	20	20	2.96 WEL HSE	OPP S/C	RECONNECT SERVICE
1034 JESSIE AVE	20	20	56.71 WML GUELPH	-	RECONNECT SERVICE
1035 JESSIE AVE	12	12	74.62 WML GUELPH	OPP S/C	RECONNECT SERVICE
1036 JESSIE AVE	20	20	0.85 WEL HSE	10.1 E OF S/C	RENEW TO R. W/ 20 COPPER
1037 JESSIE AVE	20	20	75.89 WML GUELPH	-	RECONNECT SERVICE
1038 JESSIE AVE	20	20	1.28 WEL HSE	OPP S/C	RECONNECT SERVICE
1039 JESSIE AVE	20	20	57.14 EEL WILTON	0.6 E OF S/C	RENEW TO R. W/ 20 COPPER
1040 JESSIE AVE	20	20	84.32 WML GUELPH	OPP S/C	RECONNECT SERVICE
1042 JESSIE AVE	20	20	44.12 EEL WILTON	-	RECONNECT SERVICE
1043 JESSIE AVE	12	12	3.39 EWL HSE	0.5 E OF S/C	RENEW TO R. W/ 20 COPPER
1044 JESSIE AVE	20	20	59.02 EEL WILTON	-	RECONNECT SERVICE
1046 JESSIE AVE	20	20	1.83 WEL HSE	1.1 W OF S/C	RECONNECT SERVICE
1047 JESSIE AVE	20	20	36.41 EEL WILTON	OPP S/C	RECONNECT SERVICE
1049 JESSIE AVE	20	20	2.18 WEL HSE	OPP S/C	RECONNECT SERVICE
1051 JESSIE AVE	20	20	28.61 EEL WILTON	0.6 W OF S/C	RECONNECT SERVICE
1052 JESSIE AVE	20	20	1.82 WEL HSE	OPP S/C	RENEW TO R. W/ 20 COPPER
1053 JESSIE AVE	20	20	52.72 EEL WILTON	-	RECONNECT SERVICE
1054 JESSIE AVE	20	20	2.63 EWL HSE	OPP S/C	RECONNECT SERVICE
1055 JESSIE AVE	20	20	14.24 EEL WILTON	0.6 W OF S/C	RECONNECT SERVICE
1056 JESSIE AVE	20	20	2.38 WEL HSE	OPP S/C	RENEW TO R. W/ 20 COPPER
1057 JESSIE AVE	20	20	6.12 EEL WILTON	-	RECONNECT SERVICE
1058 JESSIE AVE	20	20	1.66 WEL HSE	1.7 E OF S/C	RENEW TO R. W/ 20 COPPER
1059 JESSIE AVE	20	20	42.87 EEL WILTON	-	RECONNECT SERVICE
1063 WARSAW AVE	20	20	3.12 WEL HSE	0.6 E OF S/C	RENEW TO R. W/ 20 COPPER
1064 WARSAW AVE	20	20	3.74 WEL HSE	OPP S/C	RENEW TO R. W/ 20 COPPER
1065 WARSAW AVE	20	20	20.23 EEL WILTON	0.4 E OF S/C	RENEW TO R. W/ 20 COPPER
1066 WARSAW AVE	20	20	5.24 EEL WILTON	0.4 E OF S/C	RENEW TO R. W/ 20 COPPER
1067 WARSAW AVE	20	20	1.36 WEL HSE	0.4 W OF S/C	SERV. OFF WARSAW
1068 WARSAW AVE	20	20	9.26 EEL WILTON	OPP S/C	SERV. OFF WARSAW
1069 WARSAW AVE	20	20	0.11 WML WILTON	-	RECONNECT SERVICE
1070 WARSAW AVE	20	20	10.23 WML WILTON	OPP S/C	RECONNECT SERVICE

\*SERVICES TO BE RENEWED TO R. ALL OTHERS TO BE RECONNECTED

VALVES TO BE COUNTER-CLOCKWISE TO CLOSE (RED OPERATING NUT)



**WARNING**  
IF POWER EQUIPMENT OR EXPLOSIVES ARE TO BE USED FOR EXCAVATION ON THIS PROJECT THE CONTRACTOR MUST:  
1) NOTIFY THE GAS COMPANY OF THE PROPOSED LOCATION OF EXCAVATION.  
2) TAKE PRECAUTION TO AVOID DAMAGE TO GAS COMPANY INSTALLATIONS.  
SEE PROVINCIAL REGULATION 210/72 FOR DETAILS

**LOCATION APPROVED UNDERGROUND STRUCTURES**  
SUPV. U/G STRUCTURES COMMITTEE DATE  
NOTE: LOCATION OF UNDERGROUND STRUCTURES AS SHOWN ARE BASED ON THE BEST INFORMATION AVAILABLE BUT NO GUARANTEE IS GIVEN THAT ALL EXISTING UTILITIES ARE SHOWN OR THAT THE GIVEN LOCATIONS ARE EXACT. CONFIRMATION OF EXISTENCE AND EXACT LOCATION OF ALL SERVICES MUST BE OBTAINED FROM THE INDIVIDUAL UTILITIES BEFORE PROCEEDING WITH CONSTRUCTION.

B.M. ELEV.	
CONSTRUCTION COMPLETION DATE: YYYY MM DD	
DESIGNED BY	LA
CHECKED BY	SC
DRAWN BY	CJH
APPROVED BY	KZ
SCALE:	
HORIZONTAL	1:250
VERTICAL	1:50
RELEASED FOR CONSTRUCTION	K.R. ZUREK
DATE	2013 04 09
DATE	13.04.09
PLOT DATE:	2013 04 09

ENGINEER'S SEAL	
ORIGINAL SIGNED BY S.R.J. COURNOYER	13.04.08
CONSULTANT DRAWING NUMBER	-

**THE CITY OF WINNIPEG**  
WATER AND WASTE DEPARTMENT  
ENGINEERING DIVISION

2013 WATER RENEWALS

**WILTON STREET**  
WARSAW AVENUE TO  
5 N OF JESSIE AVENUE

SHEET 14 OF 15  
CITY DRAWING NUMBER  
D-13187