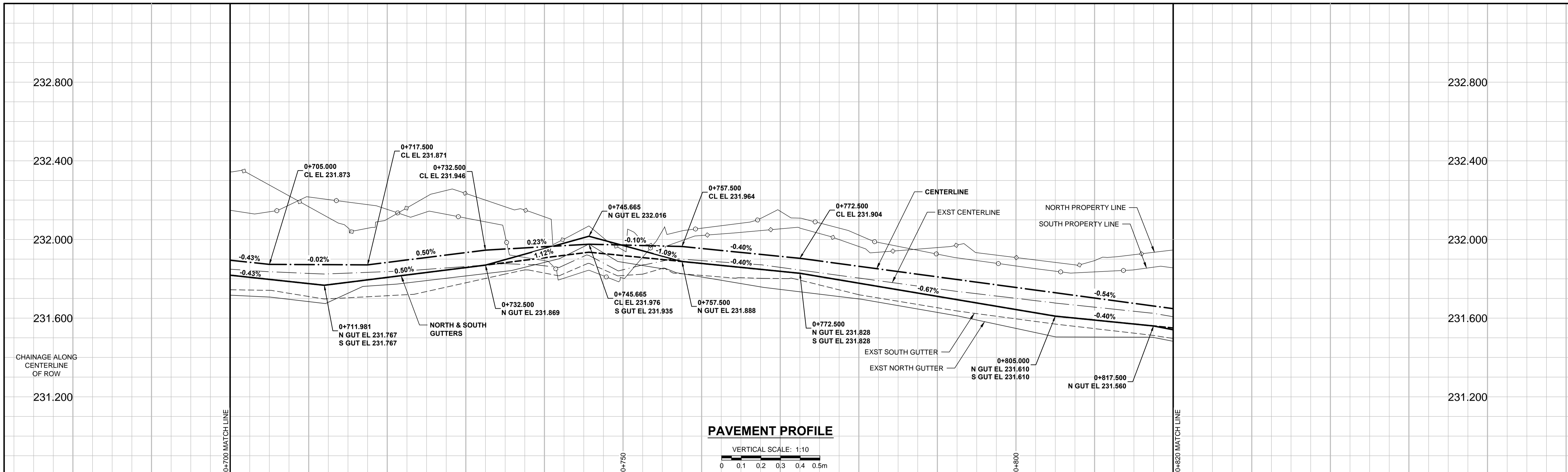
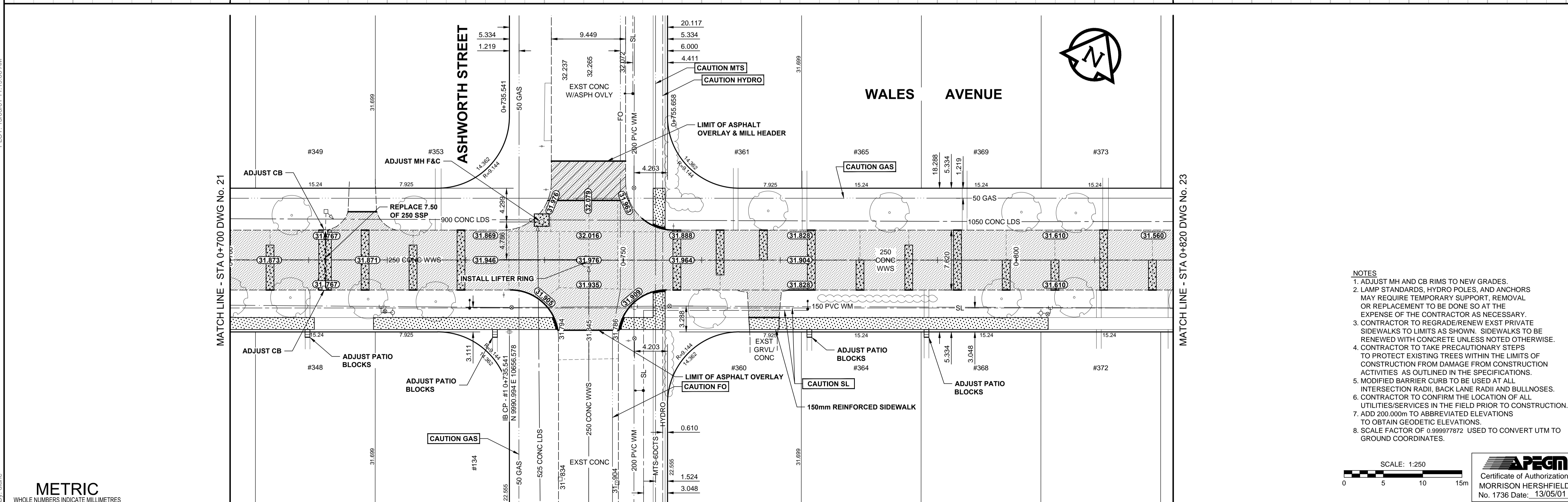


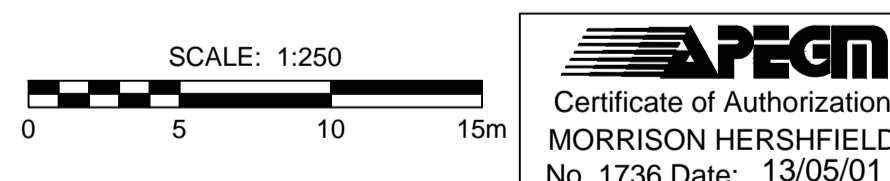
A1 SIZE 894mm x 841mm



PLOT: 13/05/01 11:19:06 AM



- NOTES**
1. ADJUST MH AND CB RIMS TO NEW GRADES.
 2. LAMP STANDARDS, HYDRO POLES, AND ANCHORS MAY REQUIRE TEMPORARY SUPPORT, REMOVAL OR REPLACEMENT TO BE DONE SO AT THE EXPENSE OF THE CONTRACTOR AS NECESSARY.
 3. CONTRACTOR TO REGRADE/RENEW EXST PRIVATE SIDEWALKS TO LIMITS AS SHOWN. SIDEWALKS TO BE RENEWED WITH CONCRETE UNLESS NOTED OTHERWISE.
 4. CONTRACTOR TO TAKE PRECAUTIONARY STEPS TO PROTECT EXISTING TREES WITHIN THE LIMITS OF CONSTRUCTION FROM DAMAGE FROM CONSTRUCTION ACTIVITIES AS OUTLINED IN THE SPECIFICATIONS.
 5. MODIFIED BARRIER CURB TO BE USED AT ALL INTERSECTION RADII, BACK LANE RADII AND BULLNOSES.
 6. CONTRACTOR TO CONFIRM THE LOCATION OF ALL UTILITIES/SERVICES IN THE FIELD PRIOR TO CONSTRUCTION. TO OBTAIN GEODETIC ELEVATIONS.
 7. ADD 200.000m TO ABBREVIATED ELEVATIONS TO OBTAIN GEODETIC ELEVATIONS.
 8. SCALE FACTOR OF 0.999977872 USED TO CONVERT UTM TO GROUND COORDINATES.



METRIC
WHOLE NUMBERS INDICATE MILLIMETRES
DECIMALIZED NUMBERS INDICATE METRES

EXISTING	LEGEND - PLAN	NEW	EXISTING	LEGEND - PLAN	NEW	EXISTING	LEGEND - PLAN	NEW	
	GAS		MANHOLE		CONCRETE PAVEMENT		LOCATION APPROVED		GBM 62-010 ELEV 232.975m
	MTS		CATCH BASIN / CATCH PIT		CONC SIDEWALK / MEDIAN		SUPR. U/G STRUCTURES		DATE COMMITTEE
	HYDRO		CURB INLET WITH BOX		ASPHALT PAVEMENT		NOTE:		INFORMATION AVAILABLE BUT NO GUARANTEE IS GIVEN THAT ALL EXISTING UTILITIES ARE SHOWN OR THAT THE GIVEN LOCATIONS ARE EXACT. CONFIRMATION OF EXISTENCE AND EXACT LOCATION OF ALL SERVICES MUST BE OBTAINED FROM THE INDIVIDUAL UTILITIES BEFORE PROCEEDING WITH CONSTRUCTION.
	CATV / FIBRE OPTIC		TREE		PAVING STONE		RAMP CURBS		PLANING / REMOVAL
	TRAFFIC SIGNALS / PIT		TEST HOLE		GRAVEL		RAMP CURBS		PLANING / REMOVAL
	LAND DRAINAGE SEWER		PROPERTY LINE		RAMP CURBS		RAMP CURBS		PLANING / REMOVAL
	SANITARY/COMBINED SEWER		SURVEY BAR		PLANING / REMOVAL		PLANING / REMOVAL		PLANING / REMOVAL
	SEWER SERV/DRAINAGE CONN		FENCE		PLANING / REMOVAL		PLANING / REMOVAL		PLANING / REMOVAL
	WATERMAIN		BOC / EDGE OF PAVEMENT		PLANING / REMOVAL		PLANING / REMOVAL		PLANING / REMOVAL
	SUBDRAIN		ELEVATION		PLANING / REMOVAL		PLANING / REMOVAL		PLANING / REMOVAL
	DITCH		TRAFFIC SIGN		PLANING / REMOVAL		PLANING / REMOVAL		PLANING / REMOVAL

DESIGNED BY	JGK	CHECKED BY	RPB
DRAWN BY	DID/DML	APPROVED BY	BWB
HOR. SCALE	1:250	RELEASED FOR CONSTRUCTION	
VERT. SCALE	1:10	DATE	13/05/24
0	ISSUED FOR CONSTRUCTION	13/05/01	JGK
No.	REVISIONS	YYMMDD	BY

MORRISON HERSHFELD

PROFESSIONAL'S SEAL
PROVINCE OF MANITOBA
J.G. KENNEDY
Member
22326
MAY 1/13
REGISTERED PROFESSIONAL ENGINEER

CONSULTANT DRAWING No. W130003-T-022_RX.dwg

THE CITY OF WINNIPEG
PUBLIC WORKS DEPARTMENT
ENGINEERING DIVISION

2013 LOCAL STREET PACKAGE
WALES AVENUE
DAKOTA STREET TO ST ANNE'S ROAD
PAVEMENT REHABILITATION
HORIZONTAL AND VERTICAL ALIGNMENT
STA 0+700 TO STA 0+820

CITY DRAWING NUMBER N/A
SHEET 22 OF 26
DRAWING No. 22
REV 0

BID OPPORTUNITY No. 289-2013