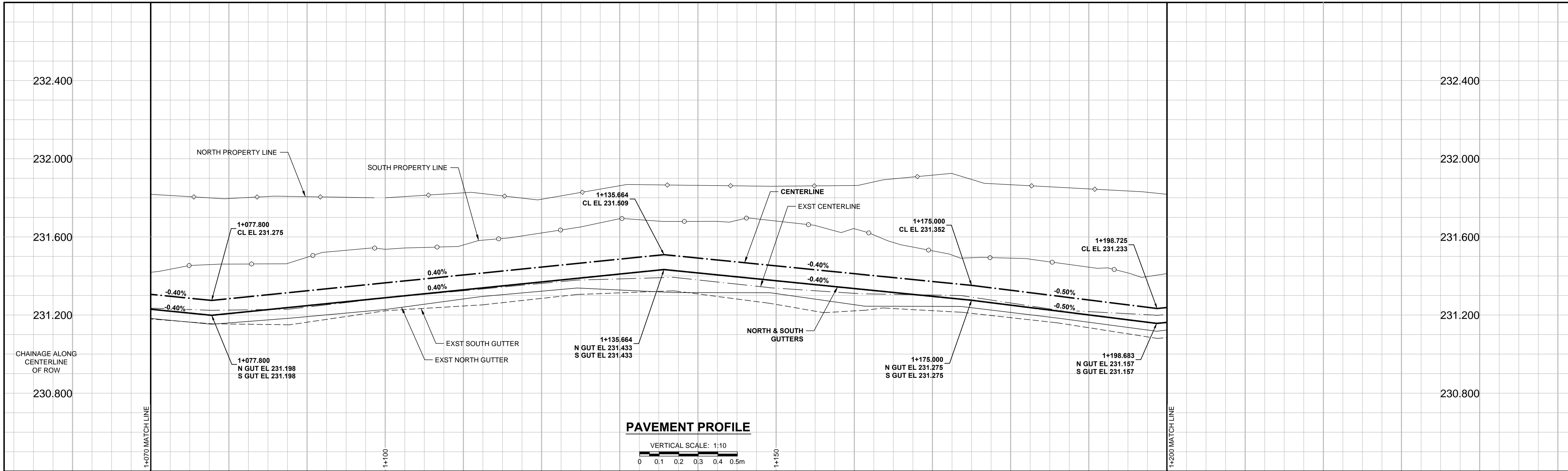
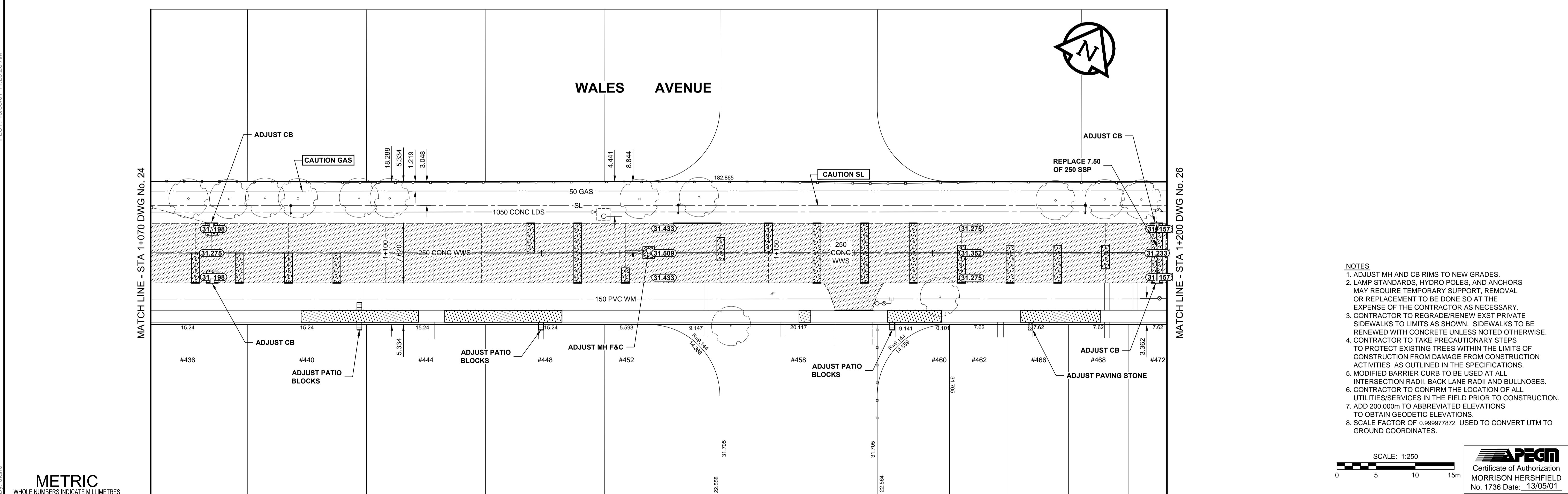


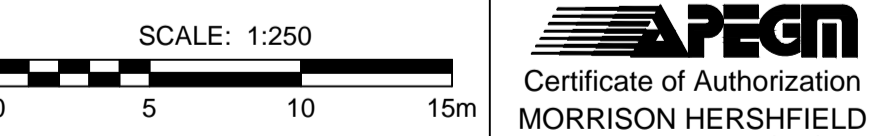
A1 SIZE 894mm x 841mm



PLOT: 13/05/01 11:20:26 AM



- NOTES**
1. ADJUST MH AND CB RIMS TO NEW GRADES.
 2. LAMP STANDARDS, HYDRO POLES, AND ANCHORS MAY REQUIRE TEMPORARY SUPPORT, REMOVAL OR REPLACEMENT TO BE DONE SO AT THE EXPENSE OF THE CONTRACTOR AS NECESSARY.
 3. CONTRACTOR TO REGRADE/RENEW EXST PRIVATE SIDEWALKS TO LIMITS AS SHOWN. SIDEWALKS TO BE RENEWED WITH CONCRETE UNLESS NOTED OTHERWISE.
 4. CONTRACTOR TO TAKE PRECAUTIONARY STEPS TO PROTECT EXISTING TREES WITHIN THE LIMITS OF CONSTRUCTION FROM DAMAGE FROM CONSTRUCTION ACTIVITIES AS OUTLINED IN THE SPECIFICATIONS.
 5. MODIFIED BARRIER CURB TO BE USED AT ALL INTERSECTION RADII, BACK LANE RADII AND BULLNOSES.
 6. CONTRACTOR TO CONFIRM THE LOCATION OF ALL UTILITIES/SERVICES IN THE FIELD PRIOR TO CONSTRUCTION.
 7. ADD 200.000m TO ABBREVIATED ELEVATIONS TO OBTAIN GEODETIC ELEVATIONS.
 8. SCALE FACTOR OF 0.999977872 USED TO CONVERT UTM TO GROUND COORDINATES.



METRIC
WHOLE NUMBERS INDICATE MILLIMETRES
DECIMALIZED NUMBERS INDICATE METRES

| EXISTING | LEGEND - PLAN | NEW | EXISTING | LEGEND - PLAN | NEW | EXISTING | LEGEND - PLAN | NEW | |
|----------|--------------------------|-----|-------------------------|---------------|------------------------|----------|--|-----|--------------------------|
| | GAS | | MANHOLE | | CONCRETE PAVEMENT | | LOCATION APPROVED | | SUPR. U/G STRUCTURES |
| | MTS | | CATCH BASIN / CATCH PIT | | CONC SIDEWALK / MEDIAN | | DATE COMMITTEE | | NOTE: |
| | HYDRO | | CURB INLET WITH BOX | | ASPHALT PAVEMENT | | LOCATION OF UNDERGROUND STRUCTURES AS SHOWN ARE BASED ON THE BEST INFORMATION AVAILABLE. BUT NO GUARANTEE IS GIVEN THAT ALL EXISTING UTILITIES ARE SHOWN OR THAT THE GIVEN LOCATIONS ARE EXACT. CONFIRMATION OF EXISTENCE AND EXACT LOCATION OF ALL SERVICES MUST BE OBTAINED FROM THE INDIVIDUAL UTILITIES BEFORE PROCEEDING WITH CONSTRUCTION. | | GAS |
| | CATV / FIBRE OPTIC | | TREE | | PAVING STONE | | REVISIONS | | HYDRO |
| | TRAFFIC SIGNALS / PIT | | TEST HOLE | | GRAVEL | | DATE | | LAND DRAINAGE SEWER |
| | LAND DRAINAGE SEWER | | PROPERTY LINE | | RAMP CURB | | DATE | | SANITARY/COMBINED SEWER |
| | SANITARY/COMBINED SEWER | | SURVEY BAR | | PLANING / REMOVAL | | DATE | | SEWER SERV/DRAINAGE CONN |
| | SEWER SERV/DRAINAGE CONN | | FENCE | | DATE | | DATE | | WATERMAIN |
| | WATERMAIN | | BOC / EDGE OF PAVEMENT | | DATE | | DATE | | SUBDRAIN |
| | SUBDRAIN | | ELEVATION | | DATE | | DATE | | DITCH |
| | DITCH | | TRAFFIC SIGN | | DATE | | DATE | | DITCH |

| | | |
|-----------------------------|---------------------|---------------------------|
| GBM 62-010 ELEV 232.975m | DESIGNED BY JGK | CHECKED BY RPB |
| | DRAWN BY DID/DML | APPROVED BY BWB |
| | HOR. SCALE 1:250 | RELEASED FOR CONSTRUCTION |
| | VERT. SCALE 1:10 | DATE MAY 1/13 |
| | DATE 13/05/24 | DATE MAY 1/13 |

MORRISON HERSHFIELD

DESIGNED BY: JGK
DRAWN BY: DID/DML
DATE: 13/05/24

CHECKED BY: RPB
APPROVED BY: BWB
RELEASED FOR CONSTRUCTION
DATE: MAY 1/13

PROFESSIONAL'S SEAL

PROVINCE OF MANITOBA
REGISTERED PROFESSIONAL ENGINEER
J.G. KENNEDY
Member 22326
MAY 1/13

CONSULTANT DRAWING No.
W130003-T-025_RX.dwg

THE CITY OF WINNIPEG
PUBLIC WORKS DEPARTMENT
ENGINEERING DIVISION

2013 LOCAL STREET PACKAGE
WALEs AVENUE
DAKOTA STREET TO ST ANNE'S ROAD
PAVEMENT REHABILITATION
HORIZONTAL AND VERTICAL ALIGNMENT
STA 1+070 TO STA 1+200

CITY DRAWING NUMBER: N/A
SHEET 25 OF 26
DRAWING No. 25
REV 0

BID OPPORTUNITY No. 289-2013