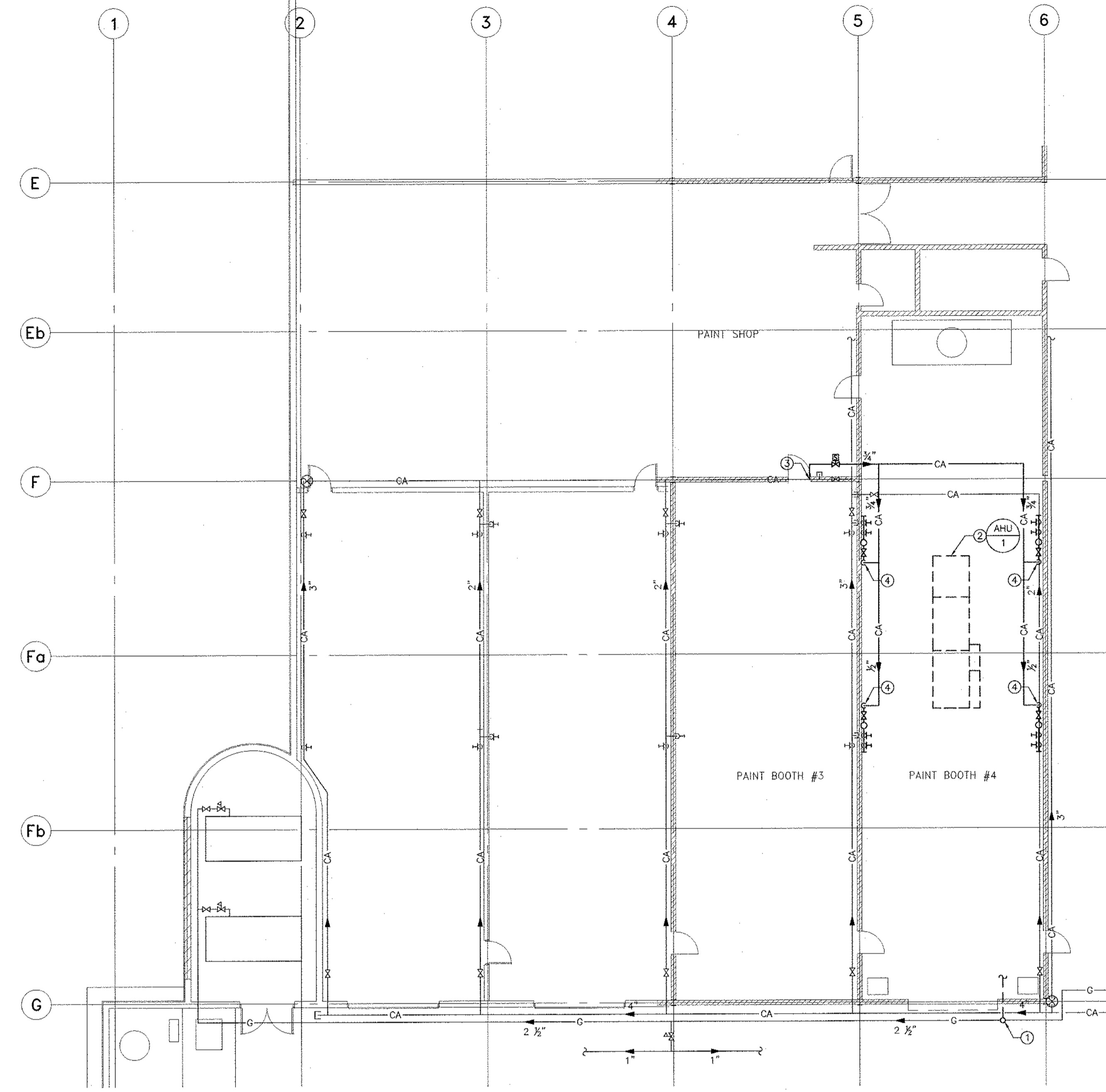
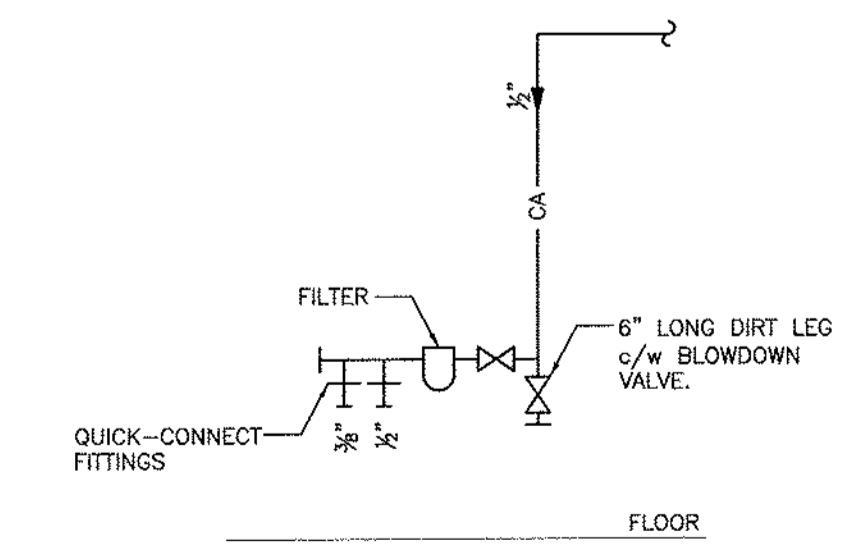


1 PAINT BOOTH #4 PLAN - PLUMBING - DEMOLITION
 SCALE: 3/32"=1'-0"
 W-1



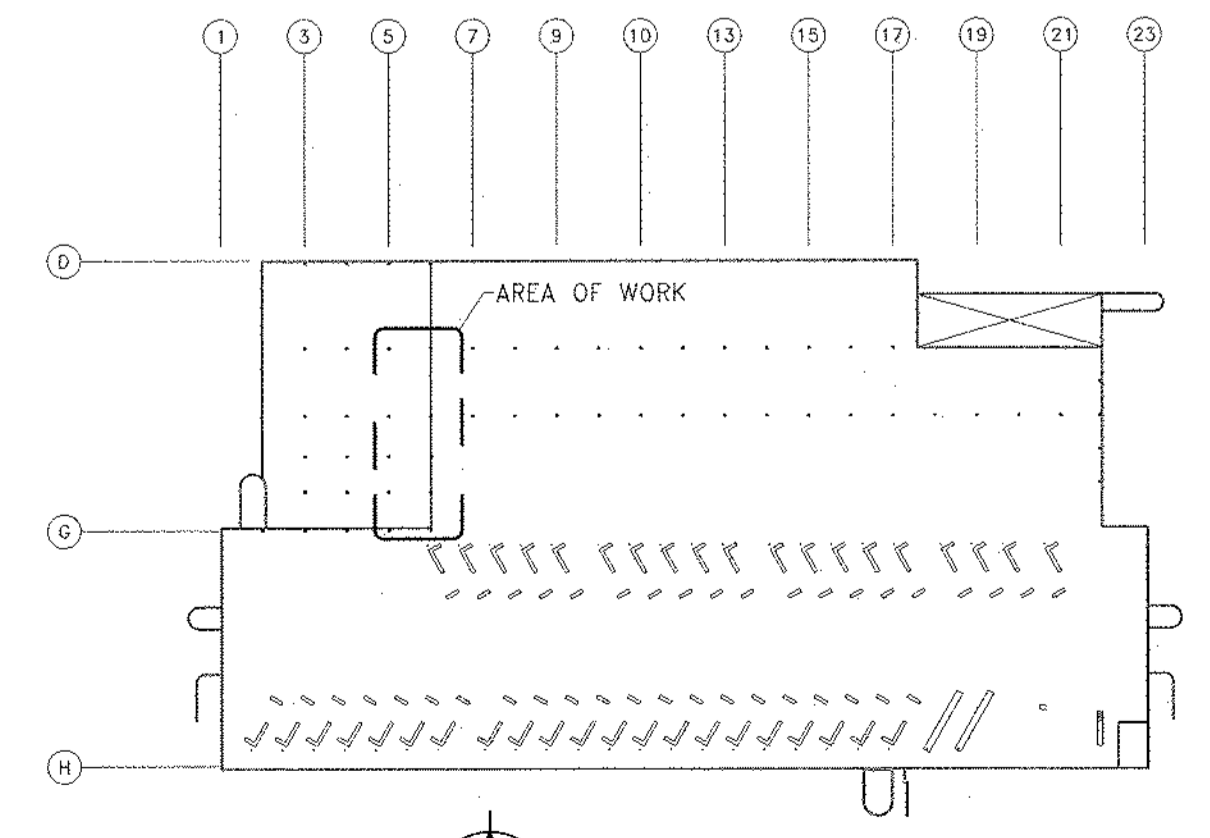
2 PAINT BOOTH #4 PLAN - PLUMBING - RENOVATION
 SCALE: 3/32"=1'-0"
 W-1



3 DETAIL AT AIR OUTLETS
 SCALE: N.T.S.
 W-1

PLUMBING LEGEND

---	EXISTING PIPING TO BE REMOVED
---	EXISTING PIPING TO REMAIN
CA	COMPRESSED AIR
G	NATURAL GAS
⊕	EQUIPMENT DESIGNATION OR PLUMBING RISER
② ②	TAGS/NOTES DESIGNATION FOR PLUMBING DRAWINGS



KEY PLAN
 SCALE: N.T.S.

GENERAL NOTES

A. MECHANICAL SUB-CONTRACTOR SHALL COORDINATE WORK WITH ALL DISCIPLINES INVOLVED.

DEMOLITION KEY NOTES ##

1. CAP EXISTING COMPRESSED AIR LINE AND REMOVE REMAINDER.
2. REMOVE EXISTING QUICK-CONNECT FITTINGS AND CAP COMPRESSED AIR LINE AT MAIN.

RENOVATION KEY NOTES #

1. 1" (5 PSI) GAS UP c/w SHUT-OFF AND THRU VERTICAL WALL ON ROOF, TO SERVE NEW AIR-HANDLING UNIT.
2. OUTLINE OF GAS-FIRED AIR-HANDLING UNIT ON ROOF. REFER TO DRAWING M-2 FOR PARTIAL ROOF PLAN.
3. CONNECT NEW 3/4" COMPRESSED AIR c/w SOLENOID VALVE TO EXISTING 2" COMPRESSED AIR. REFER TO ELECTRICAL DRAWINGS FOR WIRING. REFER TO SPECIFICATION.
4. 1/2" COMPRESSED AIR LINE DOWN TO FILTER AND 1/2" & 3/8" QUICK CONNECT FITTINGS. REFER TO DETAIL, THIS DRAWING. REFER TO SPECIFICATION.

0	ISSUED FOR BID OPPORTUNITY	XW	12/04/13
-	ISSUED FOR CLIENT REVIEW	XW	25/03/13
-	ISSUED FOR COORDINATION	XW	22/03/13
NO.	Revisions	BY	DD/MM/YY

APEGM
 Certificate of Authorization
 SMS Engineering Ltd.
 No. 166 Expiry: April 30, 2013

PROVINCE OF MANITOBA
 X WU
 Member
 30166
 REGISTERED PROFESSIONAL ENGINEER

SMS ENGINEERING
 SMS Engineering Ltd. Consulting Engineers
 770 Bradford Street Winnipeg MB Canada R3H 0K3
 Telephone: 204.775.0281 Fax: 204.772.2153
 sms@smseng.com

Project Title
**CITY OF WINNIPEG
 TRANSIT GARAGE PAINT BOOTH #4
 MAKE-UP AIR UNIT REPLACEMENT**
 WINNIPEG MANITOBA

Drawing Title
**PARTIAL FLOOR PLAN
 DEMOLITION & RENOVATION**

Drawn By	Checked By	Approved By
JD	XW	PG
Scale	Date	Project No.
AS NOTED	APR. 2013	13-064-01
Revision Number	Drawing Number	Sheet Order
0	M-1	1 OF 2