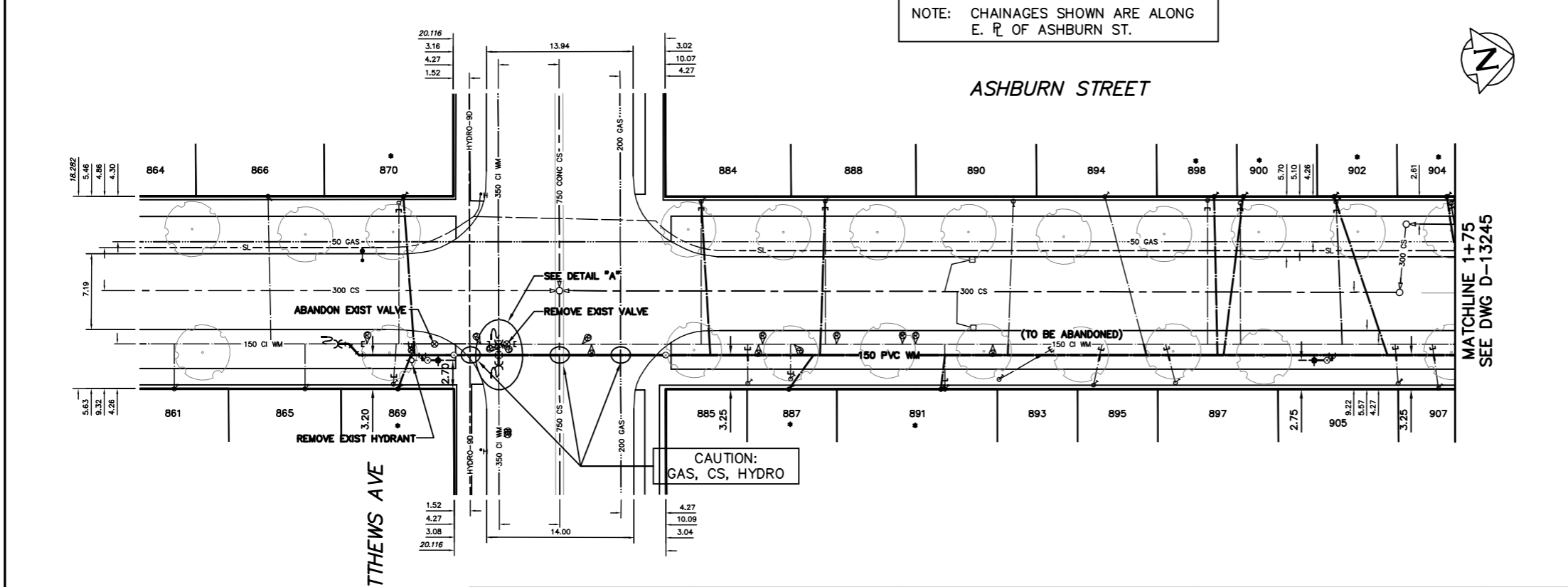


NOTE: CHAINAGES SHOWN ARE ALONG E. R. OF ASHBURN ST.

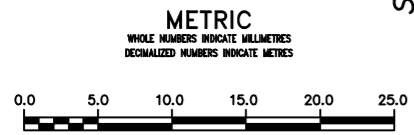


**WATER SERVICE INFORMATION**

ADDRESS	SIZE (mm) MATERIAL (STREET)	SIZE (mm) MATERIAL (PROP.)	SHORT & LONG MEASUREMENT	CORP. LOCATION	REMARKS
869 ASHBURN ST	20	20	4.3 SNL HSE	0.3 N OF S/C	RENEW TO R
870 ASHBURN ST	20	20	6.0 SSL ST. MATTHEWS	0.3 N OF S/C	RENEW TO R
870 ASHBURN ST	20	20	2.6 SNL HSE	OPP S/C	RENEW TO R
884 ASHBURN ST	12	12	5.4 SSL ST. MATTHEWS	OPP S/C	RENEW TO R
884 ASHBURN ST	12	12	7.3 SNL HSE	OPP S/C	RENEW TO R
885 ASHBURN ST	12	12	2.6 NNL ST. MATTHEWS	OPP S/C	RECONNECT SERVICE
885 ASHBURN ST	12	12	0.1 SNL HSE	OPP S/C	RECONNECT SERVICE
887 ASHBURN ST	12	12	7.2 NNL ST. MATTHEWS	OPP S/C	RENEW TO R
887 ASHBURN ST	12	12	3.6 SNL HSE	OPP S/C	RENEW TO R
888 ASHBURN ST	20	20	12.1 NNL ST. MATTHEWS	OPP S/C	RENEW TO R
889 ASHBURN ST	20	20	5.6 SNL HSE	OPP S/C	RENEW TO R
890 ASHBURN ST	20	20	15.8 NNL ST. MATTHEWS	OPP S/C	RECONNECT SERVICE
890 ASHBURN ST	20	20	0.3 SNL HSE	0.5 S OF S/C	RECONNECT SERVICE
891 ASHBURN ST	12	12	33.2 NNL ST. MATTHEWS	OPP S/C	RENEW TO R
891 ASHBURN ST	12	12	4.4 SNL HSE	OPP S/C	RENEW TO R
893 ASHBURN ST	20	20	26.5 NNL ST. MATTHEWS	OPP S/C	RECONNECT SERVICE
893 ASHBURN ST	20	20	6.2 SNL HSE	5.7 N OF S/C	RECONNECT SERVICE
894 ASHBURN ST	20	20	32.3 NNL ST. MATTHEWS	OPP S/C	RECONNECT SERVICE
894 ASHBURN ST	20	20	3.9 SNL HSE	3.6 N OF S/C	RECONNECT SERVICE
895 ASHBURN ST	20	20	41.7 NNL ST. MATTHEWS	OPP S/C	RECONNECT SERVICE
895 ASHBURN ST	20	20	5.3 SNL HSE	0.9 N OF S/C	RECONNECT SERVICE
897 ASHBURN ST	20	20	40.8 NNL ST. MATTHEWS	1.0 S OF S/C	RECONNECT SERVICE
897 ASHBURN ST	20	20	7.3 SNL HSE	1.0 S OF S/C	RENEW TO R
898 ASHBURN ST	12	12	48.4 NNL ST. MATTHEWS	OPP S/C	RENEW TO R
898 ASHBURN ST	12	12	2.6 SNL HSE	OPP S/C	RENEW TO R
900 ASHBURN ST	20	20	41.7 NNL ST. MATTHEWS	OPP S/C	RENEW TO R
900 ASHBURN ST	20	20	6.7 SNL HSE	OPP S/C	RENEW TO R
904 ASHBURN ST	12	12	65.1 NNL ST. MATTHEWS	OPP S/C	RENEW TO R
904 ASHBURN ST	12	12	1.6 SNL HSE	2.1 N OF S/C	RENEW TO R
905 ASHBURN ST	20	20	75.2 NNL ST. MATTHEWS	0.6 N OF S/C	RENEW TO R
905 ASHBURN ST	20	20	5.5 SNL HSE	0.6 N OF S/C	RENEW TO R
907 ASHBURN ST	20	20	63.8 NNL ST. MATTHEWS	0.3 S OF S/C	RECONNECT SERVICE
907 ASHBURN ST	20	20	71.6 NNL ST. MATTHEWS	0.3 S OF S/C	RECONNECT SERVICE
907 ASHBURN ST	20	20	4.0 SNL HSE	0.8 S OF S/C	RECONNECT SERVICE
907 ASHBURN ST	20	20	72.6 NNL ST. MATTHEWS	0.8 S OF S/C	RECONNECT SERVICE

\* SERVICES TO BE RENEWED TO R. ALL OTHERS TO BE RECONNECTED

VALVES TO BE COUNTER-CLOCKWISE TO CLOSE (RED OPERATING NUT)



**WARNING**  
IF POWER EQUIPMENT OR EXPLOSIVES ARE TO BE USED FOR EXCAVATION ON THIS PROJECT THE CONTRACTOR MUST:  
1) NOTIFY THE GAS COMPANY OF THE PROPOSED LOCATION OF EXCAVATION.  
2) TAKE PRECAUTION TO AVOID DAMAGE TO GAS COMPANY INSTALLATIONS.  
SEE PROVINCIAL REGULATION 210/72 FOR DETAILS

**LOCATION APPROVED UNDERGROUND STRUCTURES**  
SUPV. U/G STRUCTURES COMMITTEE DATE  
NOTE: LOCATION OF UNDERGROUND STRUCTURES AS SHOWN ARE BASED ON THE BEST INFORMATION AVAILABLE BUT NO GUARANTEE IS GIVEN THAT ALL EXISTING UTILITIES ARE SHOWN OR THAT THE GIVEN LOCATIONS ARE EXACT. CONFIRMATION OF EXISTENCE AND EXACT LOCATION OF ALL SERVICES MUST BE OBTAINED FROM THE INDIVIDUAL UTILITIES BEFORE PROCEEDING WITH CONSTRUCTION.

NO.	REVISIONS	DATE	BY

DESIGNED BY	MK	CHECKED BY	SC
DRAWN BY	CJH/RS	APPROVED BY	KZ
SCALE:		RELEASED FOR CONSTRUCTION	
HORIZONTAL	1:250		
VERTICAL	1:50		
		K.R. ZUREK	
DATE	2013 05 27	DATE	13-05-28

ENGINEER'S SEAL  
**ORIGINAL SIGNED BY S.R.J. COURNOYER 13-05-27**  
CONSULTANT DRAWING NUMBER

**THE CITY OF WINNIPEG**  
WATER AND WASTE DEPARTMENT  
ENGINEERING DIVISION  
2013 WATER RENEWALS  
ASHBURN STREET  
ST MATTHEWS AVENUE TO  
75 N OF ST MATTHEWS AVENUE  
SHEET 2 OF 11  
CITY DRAWING NUMBER  
D-13244