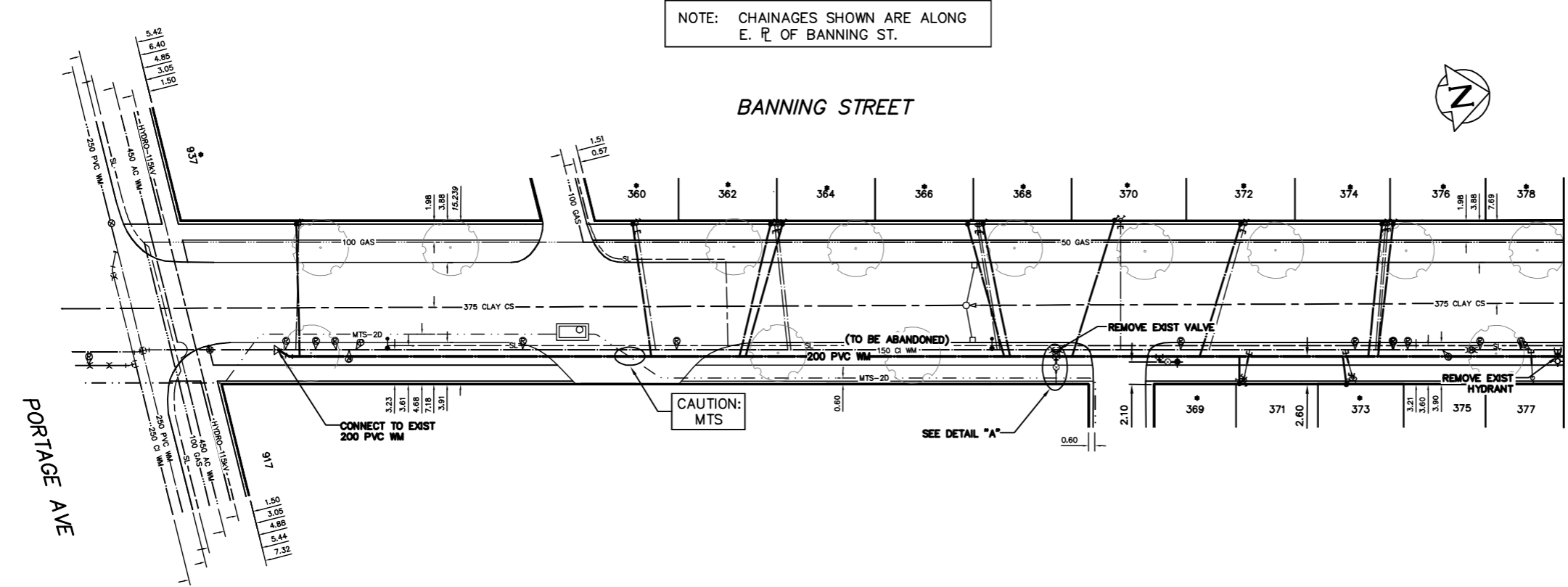


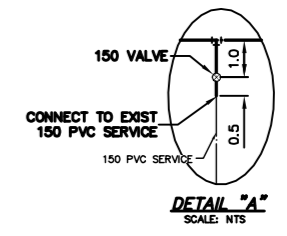
WATER SERVICE INFORMATION					
ADDRESS	SIZE (mm)	SIZE (mm)	SHORT & LONG MEASUREMENT	CORP. LOCATION	REMARKS
	MATERIAL (STREET)	MATERIAL (PROP.)			
360 BANNING ST	12	12	3.1 SNL HSE	1.8 N OF S/C	RENEW TO R
RESIDENTIAL	LEAD	LEAD	10.9>NNL PORTAGE		SHARED SERV. W/#364
362 BANNING ST	16	12	0.3>NNL HSE	1.2 N OF S/C	RENEW TO R
RESIDENTIAL	LEAD	LEAD	55.2>NNL PORTAGE		SHARED SERV. W/#362
364 BANNING ST	16	20	8.5>NNL HSE	1.2 N OF S/C	RENEW TO R
RESIDENTIAL	LEAD	COPPER	55.4>NNL PORTAGE		SHARED SERV. W/#368
366 BANNING ST	16	12	0.7>NNL HSE	1.8 N OF S/C	RENEW TO R
RESIDENTIAL	LEAD	LEAD	74.0>NNL PORTAGE		SHARED SERV. W/#366
368 BANNING ST	16	12	8.1>NNL HSE	1.9 N OF S/C	RENEW TO R
RESIDENTIAL	LEAD	LEAD	74.2>NNL PORTAGE		SHARED SERV. W/#368
369 BANNING ST	20	20	6.9>NNL HSE	0.7 N OF S/C	RENEW TO R
RESIDENTIAL	COPPER	COPPER	138.8>SSL EINARSON		DBL. SERV. W/#371
370 BANNING ST	20	20	5.4>NNL HSE	0.4 N OF S/C	RENEW TO R
RESIDENTIAL	COPPER	COPPER	87.4>NNL PORTAGE		OPP S/C
371 BANNING ST	20	12	6.1>NNL HSE	0.4 N OF S/C	RECONNECT SERVICE
RESIDENTIAL	COPPER	LEAD	138.5>SSL EINARSON		DBL. SERV. W/#369
372 BANNING ST	12	12	3.6>NNL HSE	3.3 S OF S/C	RENEW TO R
RESIDENTIAL	LEAD	LEAD	99.0>NNL PORTAGE		RENEW TO R
373 BANNING ST	20	12	2.2>NNL HSE	0.6 S OF S/C	RENEW TO R
RESIDENTIAL	COPPER	LEAD	128.5>SSL EINARSON		DBL. SERV. W/#375
374 BANNING ST	16	20	5.9>NNL HSE	0.9 S OF S/C	RENEW TO R
RESIDENTIAL	LEAD	COPPER	112.1>NNL PORTAGE		SHARED SERV. W/#378
375 BANNING ST	20	12	5.3>NNL HSE	0.9 S OF S/C	RECONNECT SERVICE
RESIDENTIAL	COPPER	-	128.2>SSL EINARSON		DBL. SERV. W/#373
376 BANNING ST	16	12	1.7>NNL HSE	0.9 S OF S/C	RENEW TO R
RESIDENTIAL	LEAD	LEAD	112.3>NNL PORTAGE		SHARED SERV. W/#374
377 BANNING ST	20	12	3.5>NNL HSE	0.1 S OF S/C	RECONNECT SERVICE
RESIDENTIAL	COPPER	LEAD	111.6>SSL EINARSON		RECONNECT SERVICE
378 BANNING ST	16	12	1.5>NNL HSE	0.9 N OF S/C	RENEW TO R
RESIDENTIAL	LEAD	LEAD	129.8>NNL PORTAGE		DBL. SERV. W/#380
917 PORTAGE AVE	150	150	-	OPP VALVE	RECONNECT SERVICE
COMMERCIAL	PVC	PVC	-		SERV. OFF BANNING
937 PORTAGE AVE	12	12	7.1>NNL BLDG		RENEW TO R
COMMERCIAL	LEAD	LEAD	10.9>NNL PORTAGE	0.3 S OF S/C	SERV. OFF BANNING

* SERVICES TO BE RENEWED TO R. ALL OTHERS TO BE RECONNECTED

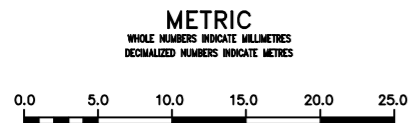
NOTE: CHAINAGES SHOWN ARE ALONG E. R. OF BANNING ST.



MATCHLINE 2+25
SEE DWG D-13247



VALVES TO BE COUNTER-CLOCKWISE TO CLOSE (RED OPERATING NUT)



WARNING
IF POWER EQUIPMENT OR EXPLOSIVES ARE TO BE USED FOR EXCAVATION ON THIS PROJECT THE CONTRACTOR MUST:
1) NOTIFY THE GAS COMPANY OF THE PROPOSED LOCATION OF EXCAVATION.
2) TAKE PRECAUTION TO AVOID DAMAGE TO GAS COMPANY INSTALLATIONS.
SEE PROVINCIAL REGULATION 210/72 FOR DETAILS

LOCATION APPROVED UNDERGROUND STRUCTURES
SUPV. U/G STRUCTURES COMMITTEE DATE
NOTE:
LOCATION OF UNDERGROUND STRUCTURES AS SHOWN ARE BASED ON THE BEST INFORMATION AVAILABLE BUT NO GUARANTEE IS GIVEN THAT ALL EXISTING UTILITIES ARE SHOWN OR THAT THE GIVEN LOCATIONS ARE EXACT. CONFIRMATION OF EXISTENCE AND EXACT LOCATION OF ALL SERVICES MUST BE OBTAINED FROM THE INDIVIDUAL UTILITIES BEFORE PROCEEDING WITH CONSTRUCTION.

B.M. ELEV.	
CONSTRUCTION COMPLETION DATE: YYYY MM DD	
DESIGNED BY	MK
CHECKED BY	SC
DRAWN BY	CJH
APPROVED BY	KZ
SCALE:	
HORIZONTAL	1:250
VERTICAL	1:50
RELEASED FOR CONSTRUCTION	K.R. ZUREK
DATE	2013 05 27
DATE	13-05-28
PLOT DATE:	2013 05 28

ENGINEER'S SEAL
ORIGINAL SIGNED BY S.R.J. COURNOYER 13-05-27
CONSULTANT DRAWING NUMBER

THE CITY OF WINNIPEG
Winnipeg
WATER AND WASTE DEPARTMENT
ENGINEERING DIVISION
2013 WATER RENEWALS
BANNING STREET
PORTAGE AVENUE TO
125 N OF PORTAGE AVENUE
SHEET 4 OF 11
CITY DRAWING NUMBER
D-13246